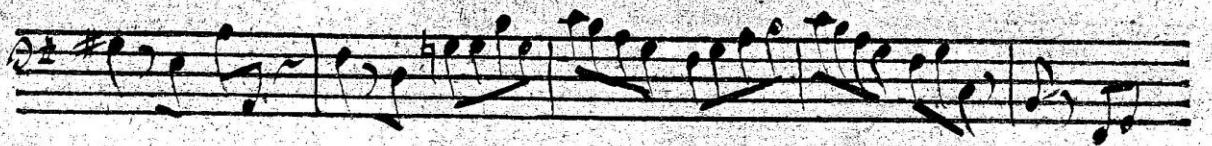


Sonata Ima

Andante



Allegro

8 *Presto*

Sonata 2da

45

2/4 3/4
Largo

10

16

23

29

38

46

53

59

66

Handwritten musical notation on a single staff, featuring a treble clef, a 2/4 time signature, and the tempo marking *Allegro*. The notation includes various note values and rests.

Handwritten musical notation on a single staff, continuing the piece with various note values and rests.

Handwritten musical notation on a single staff, continuing the piece with various note values and rests.

Handwritten musical notation on a single staff, continuing the piece with various note values and rests.

Handwritten musical notation on a single staff, continuing the piece with various note values and rests.

Handwritten musical notation on a single staff, continuing the piece with various note values and rests.

Handwritten musical notation on a single staff, continuing the piece with various note values and rests.

Handwritten musical notation on a single staff, continuing the piece with various note values and rests.

Handwritten musical notation on a single staff, continuing the piece with various note values and rests.

Handwritten musical notation on a single staff, continuing the piece with various note values and rests.

Handwritten musical notation on a single staff, continuing the piece with various note values and rests.

Handwritten musical notation on a single staff, concluding the piece with a double bar line and a fermata.

47

Presto

Sonata 3a

2

Grazioso

Handwritten musical score for Sonata 3a, page 48. The score consists of ten staves of music. The first staff is a treble clef with a key signature of one sharp (F#) and a 3/2 time signature. The tempo is marked 'Grazioso'. The music features various rhythmic patterns, including eighth and sixteenth notes, and rests. There are two fermatas above the first measure of the first staff and above the first measure of the fifth staff. The score ends with a double bar line and repeat dots on the tenth staff. Below the tenth staff are three empty staves.

Visace

50

Fuga

This image shows a handwritten musical score for a fugue, consisting of 12 staves of music. The score is written in G major (one sharp) and 3/4 time. The first staff begins with a treble clef and a common time signature, which is then changed to 3/4. The word "Fuga" is written above the second staff. The music features complex rhythmic patterns, including sixteenth and thirty-second notes, and various rests. The piece concludes with a double bar line and repeat dots at the end of the twelfth staff.

Sonata 4^{ta}

51

Gravioso

54

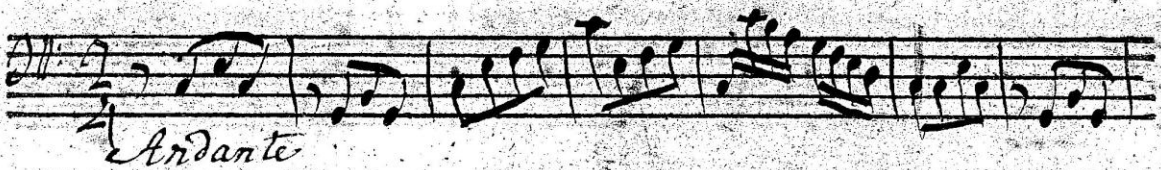
Allegro

Allegretto

51

Sonata 5^a

Andante



A musical staff with a treble clef and a common time signature. It contains a series of notes, including some beamed eighth notes and a sixteenth note.

8



A musical staff with a treble clef and a common time signature. It contains a series of notes, including some beamed eighth notes.

16



A musical staff with a treble clef and a common time signature. It contains a series of notes, including some beamed eighth notes. There are some handwritten 'f' markings above the notes.

23



A musical staff with a treble clef and a common time signature. It contains a series of notes, including some beamed eighth notes. There is a handwritten '29' above the staff.

31



A musical staff with a treble clef and a common time signature. It contains a series of notes, including some beamed eighth notes.

38



A musical staff with a treble clef and a common time signature. It contains a series of notes, including some beamed eighth notes.

46



A musical staff with a treble clef and a common time signature. It contains a series of notes, including some beamed eighth notes.

52



A musical staff with a treble clef and a common time signature. It contains a series of notes, including some beamed eighth notes. There is a handwritten '56' above the staff.



Four empty musical staves with treble clefs and common time signatures.

Handwritten musical notation on a five-line staff. The time signature is 2/4. The tempo marking *Allegro* is written below the staff. The music begins with a treble clef and a key signature of one sharp (F#).

Handwritten musical notation on a five-line staff, continuing the piece.

Handwritten musical notation on a five-line staff, continuing the piece.

Handwritten musical notation on a five-line staff, continuing the piece.

Handwritten musical notation on a five-line staff, continuing the piece.

Handwritten musical notation on a five-line staff, continuing the piece.

Handwritten musical notation on a five-line staff, continuing the piece.

Handwritten musical notation on a five-line staff, continuing the piece.

Handwritten musical notation on a five-line staff, continuing the piece.

Handwritten musical notation on a five-line staff, continuing the piece.

Handwritten musical notation on a five-line staff, continuing the piece.

Handwritten musical notation on a five-line staff, concluding the piece with a double bar line and repeat dots.

56

Fuga

This image shows a page of handwritten musical notation, numbered 56 in the top left corner. The title "Fuga" is written in a cursive hand below the first staff. The score consists of 12 staves of music, each with a treble clef and a common time signature (C). The notation is dense, featuring various rhythmic values such as eighth and sixteenth notes, often beamed together. There are several instances of slurs and accents throughout the piece. The paper shows signs of age, with some staining and a slightly grainy texture. The handwriting is clear and consistent, typical of a composer's manuscript.

Sonata G^{ma}

Largo



CORR



58

Allegro

3 3

Presto

59

2 2 2

2

2 2 2

3 2

2

2

2 2 2