

Six Sonatas

for

Two Violins, two German

Flutes or two Hautboys

with a

Bass for the Violoncello or

HARPSICORD

Compos'd by

Charles Barbandt

Musician to His Majesty at Hanover

==== Opera I.^{ma} =====

91
SONATA I. SECONDO

5
Andante

Pia. For. Pia.

For.

Pia.

For. Pia.

For.

Volti

SECONDO

Allegretto

The first section, titled "Allegretto", is written in G major (one sharp) and 3/8 time. It consists of nine staves of music. The piece begins with a treble clef, a key signature of one sharp (F#), and a 3/8 time signature. The first staff has a fermata over the first measure. The music is characterized by frequent trills (tr) and slurs. The piece concludes with a double bar line and repeat dots.

*Tempo di
Menuette*

The second section, titled "Tempo di Menuette", is written in G major (one sharp) and 3/4 time. It consists of four staves of music. The piece begins with a treble clef, a key signature of one sharp (F#), and a 3/4 time signature. The music features a mix of eighth and sixteenth notes, with several trills (tr) and slurs. The piece concludes with a double bar line and repeat dots.

SONATA II. SECONDO

Allegro

Pia. *For.*

Pia.

For. *Volti*

SECONDO

Adagio

Musical score for the Adagio section, measures 1 through 5. The music is written in treble clef with a key signature of two flats (B-flat and E-flat) and a 3/4 time signature. The notation includes various rhythmic values such as quarter, eighth, and sixteenth notes, along with rests, slurs, and trills. Measure 1 begins with a whole note chord. Measure 2 features a second ending bracket. Measure 3 contains a trill. Measure 4 includes a trill and a fermata. Measure 5 ends with a fermata. The words "Pia." and "For." are written below the staff in measures 4 and 5 respectively.

Allegretto

Musical score for the Allegretto section, measures 6 through 10. The music is written in treble clef with a key signature of two flats and a 3/8 time signature. The tempo is marked with a '5' above the staff. The notation is more rhythmic, featuring eighth and sixteenth notes, slurs, and trills. Measure 6 starts with a trill. Measure 7 includes a trill and a fermata. Measure 8 features a trill and a fermata. Measure 9 contains a trill. Measure 10 ends with a trill and a fermata.

SECONDO

SONATA III

Allegro

This section of the musical score is marked *Allegro* and is written in a 2/4 time signature with a key signature of two flats (B-flat and E-flat). It consists of ten staves of music. The notation includes various rhythmic values such as eighth and sixteenth notes, often beamed together. There are several trills (tr) and slurs throughout the piece. The first staff begins with a treble clef and a key signature of two flats. The music concludes with a double bar line and repeat dots.

Adagio

This section of the musical score is marked *Adagio* and is written in a 2/4 time signature with a key signature of two flats. It consists of four staves of music. The notation includes various rhythmic values such as eighth and sixteenth notes, often beamed together. There are several trills (tr) and slurs throughout the piece. The first staff begins with a treble clef and a key signature of two flats. The music concludes with a double bar line and repeat dots.

Volti

SECONDO

*Tempo di
Menuette*

SONATA IV.

04

Allegretto

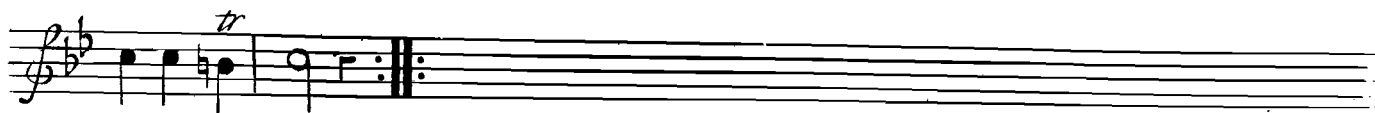
SECONDO



*Tempo di
Menuette*



Fine



La Prima Menuette Da Capo

SECOND O

SONATA V.

4
8
Allegretto

Molto Andante

Pia. For. Pia.

For.

SECONDO

For. Pia. For.

*Tempo di
Menuette*

Pia. For.

Pia. For.

SONATA VI.

06

Adagio

Pia. For.

Pia. Volta

SECONDO

Allegro

10

SECONDO

Andantino

Pia.

For

Pia. For.

Pia.

For. Pia. For.

tr

FINE