

Schranck No. II.  
27. Fach 42. Lage.

Violini  
Co Wm Viola e Basso  
Partitura Solo  
Del Sig: Vivaldi.  
C 5 7 9

Einst: Cx 1118

[6 Blatt]

Mus. 2389-N-214

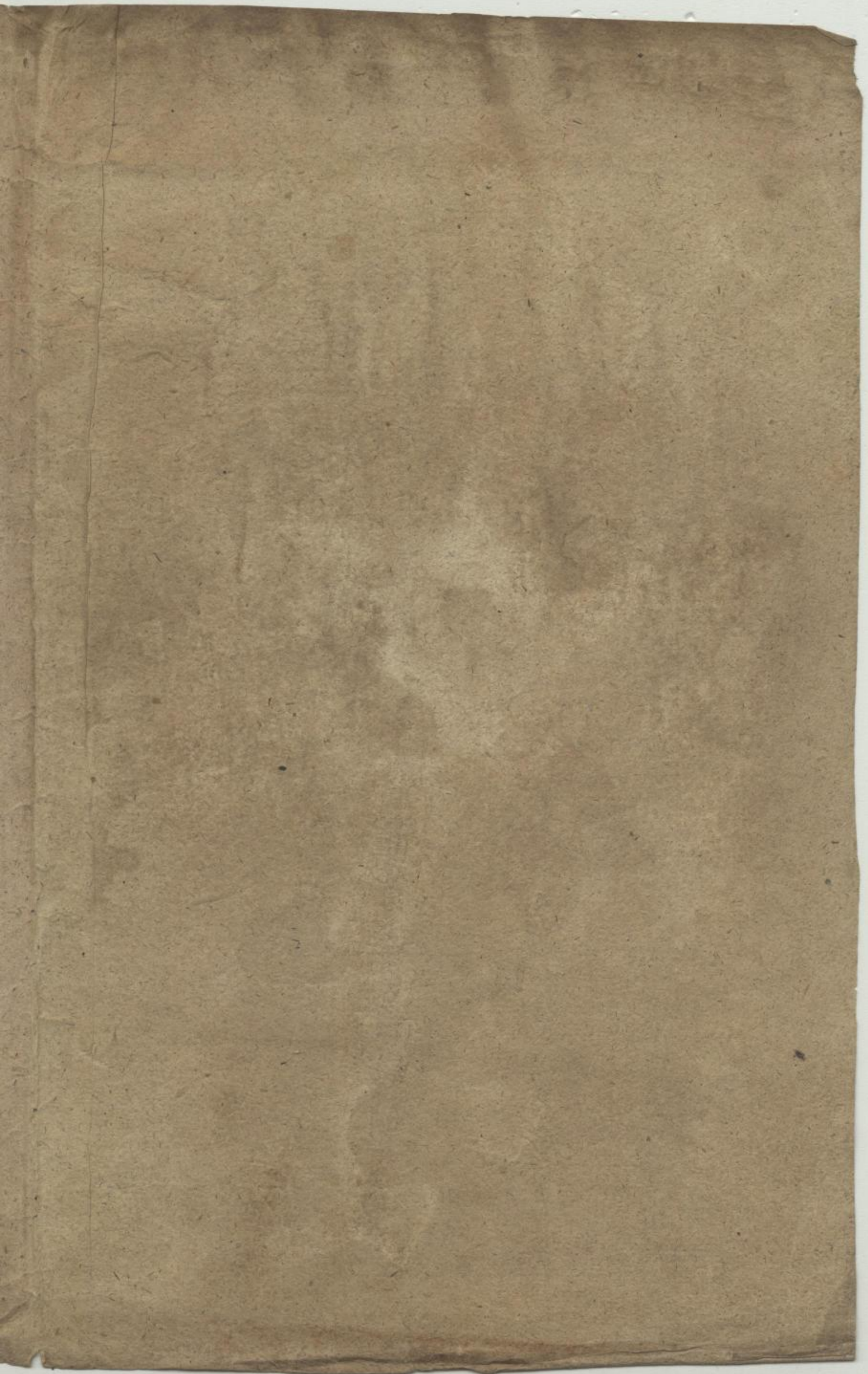


13











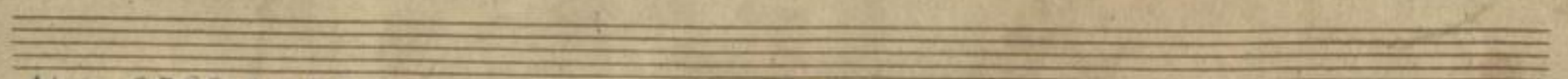
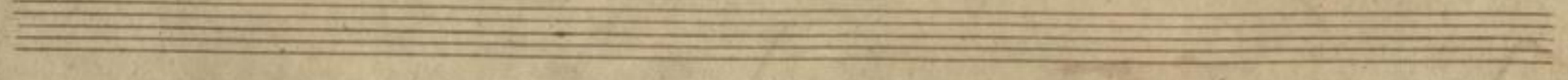
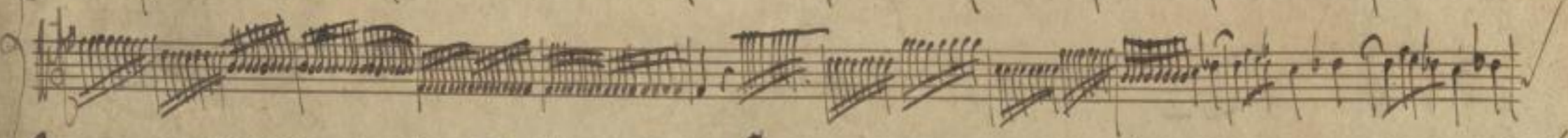
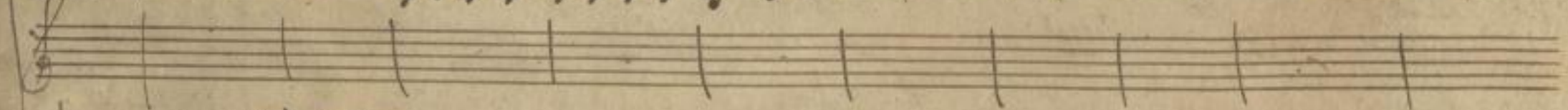
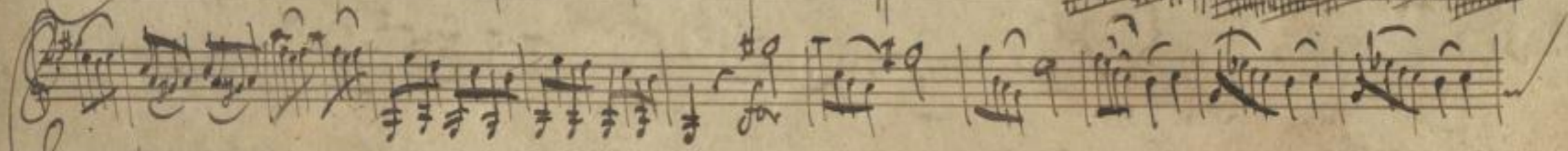
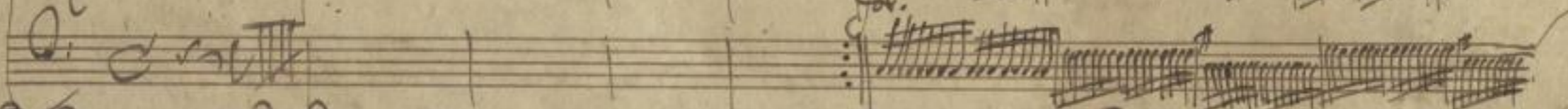
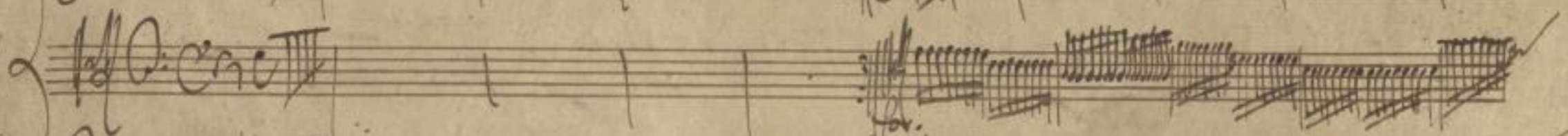
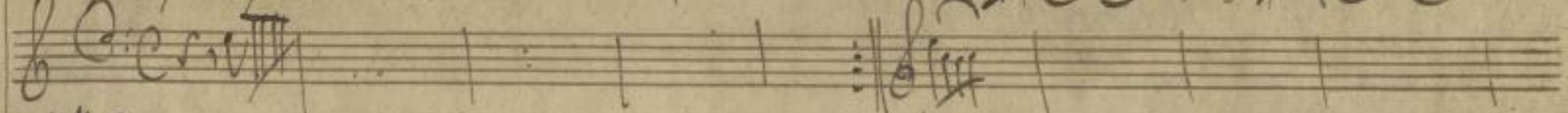
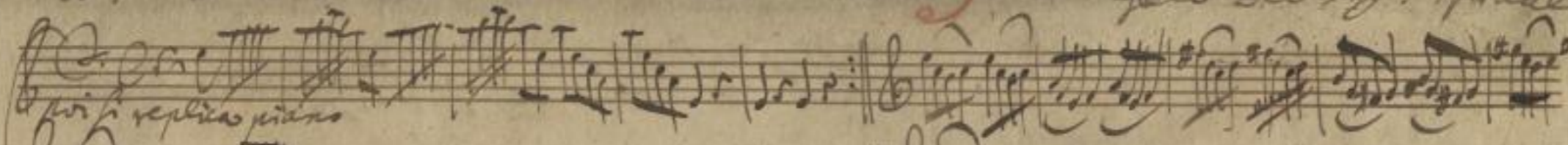




*all.*

*Andonia del operanda  
gelo del sig. Vivaldi.*

9



Mus. 2389-N-2,4

~~1748 (1-6)~~

Sächs.  
Landes-  
bibl.



Handwritten musical score on aged paper, featuring ten staves of music. The notation includes treble and bass clefs, various note values, rests, and dynamic markings such as "pian." and "for.". The paper shows signs of age and wear.

2

1

6



Handwritten musical score on aged paper, featuring ten staves. The notation includes various notes, rests, and clefs. The first two staves appear to be vocal lines with lyrics written above. The remaining staves are instrumental, featuring complex rhythmic patterns and dense chordal textures. The paper is yellowed and shows signs of age.

9 3



A page of handwritten musical notation on aged, yellowed paper. The page contains six staves of music. The first staff begins with a treble clef and a key signature of one sharp (F#). The notation is dense, featuring many sixteenth and thirty-second notes, often beamed together. There are several dynamic markings, including 'p' (piano) and 'f' (forte), and some performance instructions like 'piano' written in cursive. The paper shows signs of age, with some staining and irregular edges. The bottom of the page has two empty staves.



and. pianiss.

Violin I

Violin II

Violoncello

3 5



A handwritten musical score on aged, yellowed paper. The score consists of approximately 12 staves. The top staff is a treble clef with a key signature of one sharp (F#) and a common time signature (C). The second staff is a bass clef with a common time signature (C). The third staff is a treble clef with a key signature of one sharp (F#) and a common time signature (C). The fourth staff is a bass clef with a common time signature (C). The fifth and sixth staves are a grand staff (treble and bass clefs) with a common time signature (C). The seventh and eighth staves are a grand staff (treble and bass clefs) with a common time signature (C). The ninth and tenth staves are a grand staff (treble and bass clefs) with a common time signature (C). The eleventh and twelfth staves are a grand staff (treble and bass clefs) with a common time signature (C). The score is written in a cursive, handwritten style. There are several annotations in the score, including the word "Presto" written vertically on the left side of the fifth staff, and various numbers and symbols (e.g., 67, 436, 67, 436) written above and below notes. The paper shows signs of age, including discoloration and some wear at the edges.



piu replicato piano.

Sinfonia del Sr. Vivaldi.  
dell'opera in 3 de l'Angelo. 1717.

The image shows a page of handwritten musical notation on aged, yellowed paper. At the top left, the instruction "piu replicato piano." is written in cursive. At the top right, the title "Sinfonia del Sr. Vivaldi. dell'opera in 3 de l'Angelo. 1717." is written. The score consists of approximately 12 staves. The first staff is a treble clef with a complex melodic line. The second staff is a bass clef with a similar complex line. The third and fourth staves are treble clefs with dense, rhythmic patterns. The fifth and sixth staves are bass clefs with similar dense patterns. The seventh and eighth staves are treble clefs with more melodic lines. The ninth and tenth staves are bass clefs with dense patterns. The eleventh and twelfth staves are treble clefs with melodic lines. The notation is dense and intricate, characteristic of Baroque or early Classical period manuscripts. There are some corrections and erasures visible in the notation.

# 7



A page of handwritten musical notation on aged, yellowed paper. The score consists of ten staves. The first two staves are joined by a brace on the left and feature treble clefs. The third and fourth staves are also joined by a brace and feature bass clefs. The notation is dense and complex, with many beamed notes and intricate chordal structures. The paper shows signs of age, including foxing and some staining, particularly on the left edge.



A page of handwritten musical notation on aged, yellowed paper. The page contains six staves of music, each beginning with a treble clef. The notation is dense and complex, featuring many beamed notes, slurs, and some overlapping ink. The paper shows signs of age, including foxing and some staining. The music appears to be a single melodic line, possibly for a violin or flute. The first staff has a sharp sign (F#) and a 'p' dynamic marking. The notation is somewhat messy, with some ink bleeding and overlapping notes.

5 9



*and: pianiss<sup>mo</sup>*

The image shows a page of handwritten musical notation on aged, yellowed paper. At the top, the tempo and dynamics are marked as "and: pianiss<sup>mo</sup>". The notation consists of several systems of staves. The first system has a treble clef and contains a complex melodic line with many sixteenth notes and some slurs. The second system has a bass clef and contains a similar melodic line. The third system has a treble clef and contains a melodic line with some rests. The fourth system has a bass clef and contains a melodic line with some rests. The fifth system has a treble clef and contains a melodic line with some rests. The sixth system has a bass clef and contains a melodic line with some rests. The seventh system has a treble clef and contains a melodic line with some rests. The eighth system has a bass clef and contains a melodic line with some rests. The ninth system has a treble clef and contains a melodic line with some rests. The tenth system has a bass clef and contains a melodic line with some rests. The paper shows signs of age, including water damage and discoloration.



A handwritten musical score on aged, yellowed paper. The score consists of ten staves. The first two staves are connected by a brace on the left. The notation is dense and includes various note values, rests, and clefs. There are some markings above the notes, possibly indicating ornaments or specific performance techniques. The paper shows signs of age, including foxing and some staining.

6 11



Handwritten musical score on aged paper, featuring ten staves of music. The notation includes various notes, rests, and clefs. The word "Presto" is written above the first staff. The manuscript shows signs of age, including staining and irregular edges.