

Titania della B. V. à 3. Voci, Con Strad.

Violino Primo Sing.

Largo. *f*
rit.

f

Sotto voce

Sotto voce

f

21.

Wolff

Andante || $\text{G}^{\flat}\text{B}^{\flat}$ $\frac{2}{4}$ *Sancta Maria*

The first staff of music begins with the tempo marking 'Andante' and the key signature of two flats (G major/B minor) and a 2/4 time signature. The title 'Sancta Maria' is written below the staff. The notation consists of a series of eighth and sixteenth notes, some beamed together, and rests.

The second staff continues the melodic line with similar rhythmic patterns of eighth and sixteenth notes.

The third staff includes dynamic markings: 'sta' above the first measure and 'p^{mo}' above the second measure. The notation continues with eighth and sixteenth notes.

The fourth staff continues the melodic development with various note values and rests.

The fifth staff features a mix of eighth and sixteenth notes, with some beaming and slurs.

The sixth staff continues the melodic line with eighth and sixteenth notes.

The seventh staff includes a 'v' marking above the first measure, indicating a vibrato or breath mark. The notation continues with eighth and sixteenth notes.

The eighth staff features a 'm' marking above the first measure, possibly indicating a mordent or a specific articulation. The notation continues with eighth and sixteenth notes.

The ninth staff continues the melodic line with eighth and sixteenth notes.

The tenth and final staff on the page continues the melodic line with eighth and sixteenth notes.

Handwritten musical notation on a single staff, featuring a treble clef, a key signature of one flat, and a 6/8 time signature. The notation includes various note values, rests, and slurs. A handwritten 'p' is written above the staff.

Handwritten musical notation on a single staff, continuing the piece. It includes a 'p' dynamic marking above the staff.

Handwritten musical notation on a single staff, showing a continuation of the melodic and harmonic material.

Handwritten musical notation on a single staff, featuring a '2' marking above a note and a 'p' dynamic marking.

Handwritten musical notation on a single staff, including a 'p' dynamic marking and a fermata-like symbol.

Handwritten musical notation on a single staff, showing a continuation of the piece with various note values and rests.

Handwritten musical notation on a single staff, featuring a 'Sotto Voce' marking above the staff.

Handwritten musical notation on a single staff, showing a continuation of the piece with various note values and rests.

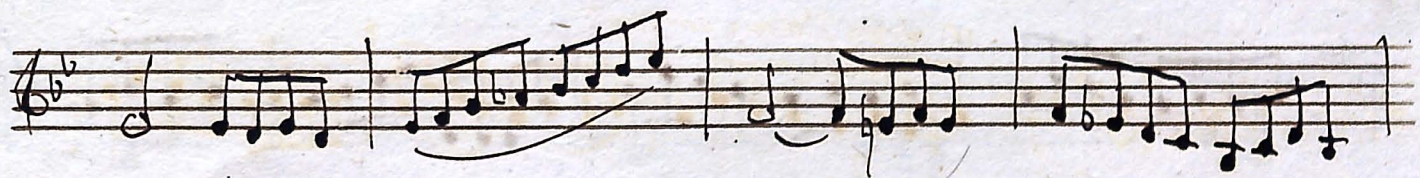
Handwritten musical notation on a single staff, featuring a continuation of the piece with various note values and rests.

Handwritten musical notation on a single staff, showing a continuation of the piece with various note values and rests.

volti

pp: sotto voce sempre
allegretto.

Vof spirituale



Vol. 2

And. Mos.to. *2 pizzicato*

Regina Angelorum

p. arco

for *pizzicato*

arco

arco

pizzicato

tenute arco. *arco* *for*


for

for *Largo*

58.

à m^{te} voce

Largo 
Agnus Dei.



soffo voce



Gauf Deo.