

Suite FaWV K:G2

con 2 Flauti, 2 Oboi, 2 Violini, 2 Viole, Fagotti e Basso

Violino I

J. F. Fasch (1688-1758)

[1.] Ouverture

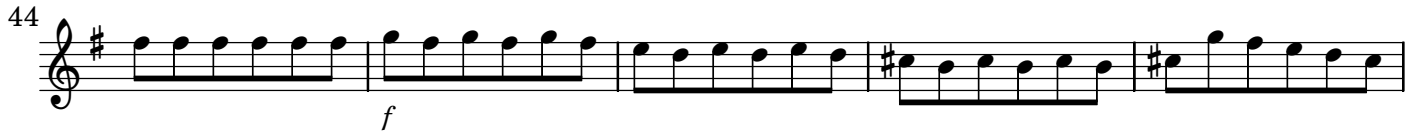






[2.] Air





[3.] Gavotte 1 - altern.



29  Musical notation for measures 29-42. Measure 29 starts with a treble clef, a key signature of one sharp (F#), and a common time signature. The music consists of eighth and sixteenth notes. Measure 34 continues the melodic line. Measure 38 features a dynamic marking of *p*. Measure 43 includes a first ending bracket (1.) and a second ending bracket (2.) leading to a repeat sign.

[4.] Gavotte 2 - Tacet

[5.] Air

 Musical notation for measures 1-13 of the Air section. Measure 1 starts with a treble clef, a key signature of one sharp (F#), and a common time signature. Measure 3 has a dynamic marking of *f*. Measure 5 has dynamic markings of *p*, *f*, and *p*. Measure 9 has a dynamic marking of *f* and the word *Solo* above it. Measure 13 has the word *Tutti* above it.

14

16 *Solo*
p

19

21

23

25 *Tutti*

27 *Solo*

29

31

33 *p*

35 *f*

Detailed description: This is a page of a musical score for Violino I, measures 14 to 35. The music is written in treble clef with a key signature of one sharp (F#). The score consists of ten staves of music. Measure 14 begins with a series of eighth-note patterns. Measure 16 features a dynamic marking of *p* and the word *Solo*. Measure 25 has a dynamic marking of *Tutti*. Measure 27 has a dynamic marking of *Solo*. Measure 33 has a dynamic marking of *p*. Measure 35 has a dynamic marking of *f*. The music includes various rhythmic patterns, including eighth notes, sixteenth notes, and slurs.

[6.] Bouree 1 - altern.



[7.] Bouree 2 - Tacet

[8.] Menuet 1 - altern.



[9.] Menuet 2 - Tacet