

# String Quartet No.5 Op.60/1

## Violin 1

John Lodge Ellerton

Allegro moderato

*p*

6

12

*f*

18

*dolce*

24

29

*cresc. sempre*

34

*f* *p dolce* *f*

40

*p* *sf*

47

54

1.



118

118

123

123

*cresc. sempre* *f*

128

128

*dolce p* *f* *p*

134

134

*sf*

140

140

147

147

153

153

*sf*

160

160

*f*

166

166

172

172

*ff*

**Andante**  
*dolce*

*p*

7

14 *p cresc.*

21 *f p*

28 *dolce*

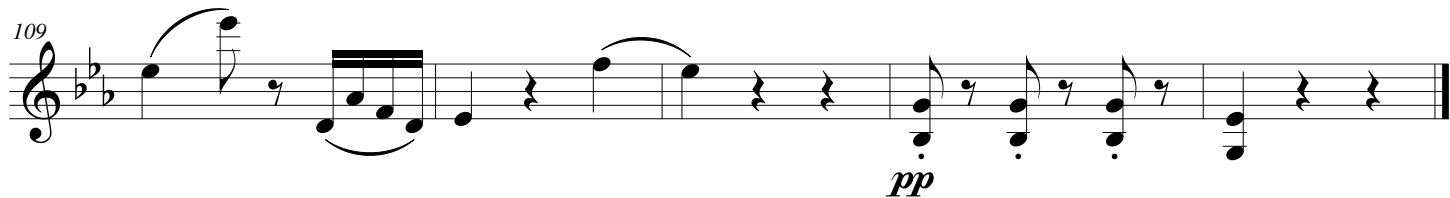
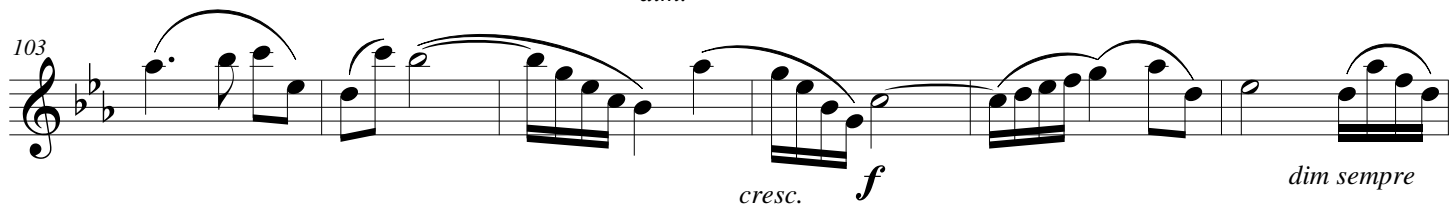
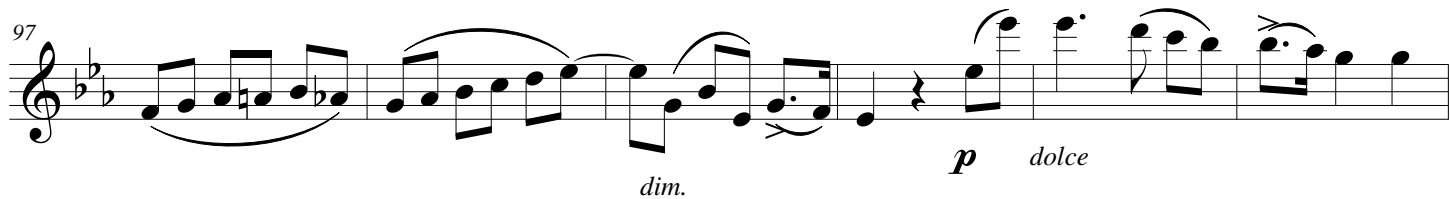
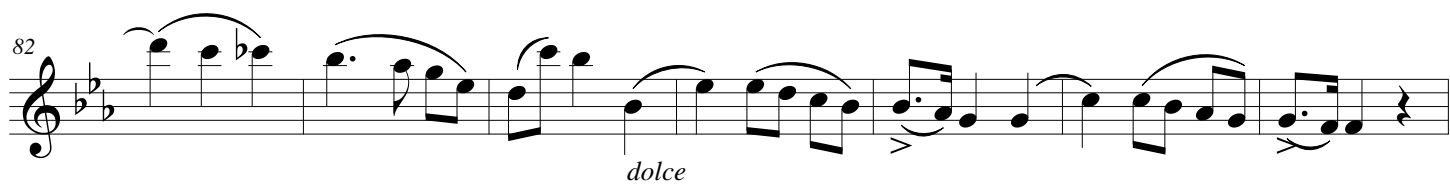
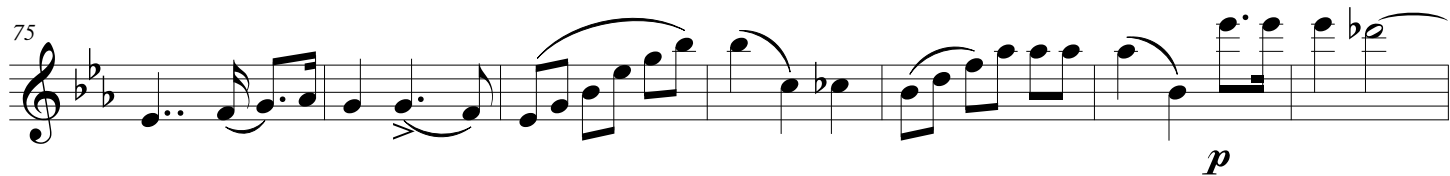
35 *cresc.*

42 *cresc.*

48 *f p*

55

Detailed description: This musical score is for a single melodic line in 3/4 time, written in a key signature of two flats (B-flat and E-flat). The tempo is marked 'Andante' and the character is 'dolce'. The piece begins with a piano (*p*) dynamic. The first six measures (1-6) feature a series of eighth and quarter notes with slurs and accents. Measure 7 starts a new phrase. Measures 14-15 show a piano (*p*) dynamic with a crescendo (*cresc.*). Measure 21 features a forte (*f*) dynamic followed by a piano (*p*) dynamic. Measure 28 is marked 'dolce'. Measure 35 begins with a crescendo (*cresc.*). Measure 42 also features a crescendo (*cresc.*). Measure 48 starts with a forte (*f*) dynamic and ends with a piano (*p*) dynamic. The score concludes at measure 55.



Scherzo  
Allegro

Musical score for Scherzo, Allegro, page 6. The score consists of ten staves of music in 3/4 time, key of B-flat major. It includes various dynamics (*p*, *cresc.*, *f*, *sf*, *dolce*), articulation (accents, slurs), and repeat signs with first and second endings. The piece concludes with "Schizzo D.C.".

Dynamics: *p*, *cresc.*, *f*, *sf*, *dolce*.  
 Rehearsal marks: 8, 16, 24, 32, 40, 49, 58, 67, 75, 84.  
 Section markers: *Trio*, *Fine*, *Scherzo D.C.*

**Allegro molto**

4

*p*

9

*f*

16

*p* *cresc.* *sempre cresc.*

23

*sf* *ff* *pp* *dolce*

30

37

43

*f* *dolce*

49

55

*p* *p*

Detailed description: The musical score is written on a single treble clef staff in 4/4 time. It begins with a repeat sign and a first ending bracket. The tempo is marked 'Allegro molto'. The key signature has two flats. The score is divided into nine staves, each starting with a measure number. The first staff (measures 1-8) starts with a dynamic of *p*. The second staff (measures 9-15) features a dynamic of *f*. The third staff (measures 16-22) includes dynamics *p*, *cresc.*, and *sempre cresc.*. The fourth staff (measures 23-29) has dynamics *sf*, *ff*, *pp*, and *dolce*. The fifth staff (measures 30-36) continues the melodic line. The sixth staff (measures 37-42) features a dynamic of *f*. The seventh staff (measures 43-48) includes a dynamic of *dolce*. The eighth staff (measures 49-54) continues the melodic line. The ninth staff (measures 55-60) ends with a double bar line and repeat dots, with dynamics *p* and *p*.

8

61

*dolce*

68

75

82

*f*

88

*f*

94

*p*

102

*f*

109

*p* *cresc.*

116

*ff*

123

*pp* *dolce*



130 *cresc.* **3** *cresc.*

139 *f* *p dolce*

145

151 *dim.* *p*

158

165 *cresc.*

172 *ff*

178

184 *ff*