

(li. 57.)

Dom. 21.
Trinit.

Deer, wenn Trübsaal daist
a 9.
5 Strumenti.
4 Voci.
4 Voci in Lipsieno.
Continuo
Edel Sigr
Exlobach.

ES

1710.

(0 29)



Mus. 2115-E-505

1

Handwritten musical score on the left page, featuring ten staves of music. The notation includes notes, rests, and various accidentals. Above the first staff, there are handwritten numbers: 6 5 # 6 # 6 7 6 5, 6 7 6 # 6 6 6 # 6 # 6 7 6 5, and # # # # #. The word "Stromm." is written below the first staff. Other annotations include "Stromm.", "Sopr.", "A. T.", "Cap.", and "Alt. sol.". The page number "2" is visible at the bottom center.

Handwritten musical score on the right page, featuring five staves of music. The notation includes notes, rests, and various accidentals. Above the first staff, there are handwritten numbers: 6 # 6 6 5 # 6 6. The word "Soli." is written below the fourth staff. The word "piano" is written below the fifth staff.

100 103 104 105 106 107 108 109 110 111 112 113 114 115 116 117 118 119 120 121 122 123 124 125 126 127 128 129 130 131 132 133 134 135 136 137 138 139 140 141 142 143 144 145 146 147 148 149 150 151 152 153 154 155 156 157 158 159 160 161 162 163 164 165 166 167 168 169 170 171 172 173 174 175 176 177 178 179 180 181 182 183 184 185 186 187 188 189 190 191 192 193 194 195 196 197 198 199 200

Handwritten musical score on aged paper. The score consists of several staves. The top staff is a vocal line with lyrics: "Solig ist der Mann." and "Tutti." followed by "Soli." The second staff is a guitar accompaniment line with the instruction "Stromm." and "Cap." (Cappiccio). The third staff is another vocal line with "Soli." and "Cap." markings. The fourth staff is a guitar accompaniment line with "Cap." markings. The fifth staff is a vocal line with "Soli." and "Cap." markings. The sixth staff is a guitar accompaniment line with "Cap." markings. The seventh staff is a vocal line with "Soli." and "Cap." markings. The eighth staff is a guitar accompaniment line with "Cap." markings. The ninth staff is a vocal line with "Soli." and "Cap." markings. The tenth staff is a guitar accompaniment line with "Cap." markings. The eleventh staff is a vocal line with "Soli." and "Cap." markings. The twelfth staff is a guitar accompaniment line with "Cap." markings. The thirteenth staff is a vocal line with "Soli." and "Cap." markings. The fourteenth staff is a guitar accompaniment line with "Cap." markings. The fifteenth staff is a vocal line with "Soli." and "Cap." markings. The sixteenth staff is a guitar accompaniment line with "Cap." markings. The seventeenth staff is a vocal line with "Soli." and "Cap." markings. The eighteenth staff is a guitar accompaniment line with "Cap." markings. The nineteenth staff is a vocal line with "Soli." and "Cap." markings. The twentieth staff is a guitar accompaniment line with "Cap." markings. The twenty-first staff is a vocal line with "Soli." and "Cap." markings. The twenty-second staff is a guitar accompaniment line with "Cap." markings. The twenty-third staff is a vocal line with "Soli." and "Cap." markings. The twenty-fourth staff is a guitar accompaniment line with "Cap." markings. The twenty-fifth staff is a vocal line with "Soli." and "Cap." markings. The twenty-sixth staff is a guitar accompaniment line with "Cap." markings. The twenty-seventh staff is a vocal line with "Soli." and "Cap." markings. The twenty-eighth staff is a guitar accompaniment line with "Cap." markings. The twenty-ninth staff is a vocal line with "Soli." and "Cap." markings. The thirtieth staff is a guitar accompaniment line with "Cap." markings. The thirty-first staff is a vocal line with "Soli." and "Cap." markings. The thirty-second staff is a guitar accompaniment line with "Cap." markings. The thirty-third staff is a vocal line with "Soli." and "Cap." markings. The thirty-fourth staff is a guitar accompaniment line with "Cap." markings. The thirty-fifth staff is a vocal line with "Soli." and "Cap." markings. The thirty-sixth staff is a guitar accompaniment line with "Cap." markings. The thirty-seventh staff is a vocal line with "Soli." and "Cap." markings. The thirty-eighth staff is a guitar accompaniment line with "Cap." markings. The thirty-ninth staff is a vocal line with "Soli." and "Cap." markings. The fortieth staff is a guitar accompaniment line with "Cap." markings. The forty-first staff is a vocal line with "Soli." and "Cap." markings. The forty-second staff is a guitar accompaniment line with "Cap." markings. The forty-third staff is a vocal line with "Soli." and "Cap." markings. The forty-fourth staff is a guitar accompaniment line with "Cap." markings. The forty-fifth staff is a vocal line with "Soli." and "Cap." markings. The forty-sixth staff is a guitar accompaniment line with "Cap." markings. The forty-seventh staff is a vocal line with "Soli." and "Cap." markings. The forty-eighth staff is a guitar accompaniment line with "Cap." markings. The forty-ninth staff is a vocal line with "Soli." and "Cap." markings. The fiftieth staff is a guitar accompaniment line with "Cap." markings. The fifty-first staff is a vocal line with "Soli." and "Cap." markings. The fifty-second staff is a guitar accompaniment line with "Cap." markings. The fifty-third staff is a vocal line with "Soli." and "Cap." markings. The fifty-fourth staff is a guitar accompaniment line with "Cap." markings. The fifty-fifth staff is a vocal line with "Soli." and "Cap." markings. The fifty-sixth staff is a guitar accompaniment line with "Cap." markings. The fifty-seventh staff is a vocal line with "Soli." and "Cap." markings. The fifty-eighth staff is a guitar accompaniment line with "Cap." markings. The fifty-ninth staff is a vocal line with "Soli." and "Cap." markings. The sixtieth staff is a guitar accompaniment line with "Cap." markings. The sixty-first staff is a vocal line with "Soli." and "Cap." markings. The sixty-second staff is a guitar accompaniment line with "Cap." markings. The sixty-third staff is a vocal line with "Soli." and "Cap." markings. The sixty-fourth staff is a guitar accompaniment line with "Cap." markings. The sixty-fifth staff is a vocal line with "Soli." and "Cap." markings. The sixty-sixth staff is a guitar accompaniment line with "Cap." markings. The sixty-seventh staff is a vocal line with "Soli." and "Cap." markings. The sixty-eighth staff is a guitar accompaniment line with "Cap." markings. The sixty-ninth staff is a vocal line with "Soli." and "Cap." markings. The seventieth staff is a guitar accompaniment line with "Cap." markings. The seventy-first staff is a vocal line with "Soli." and "Cap." markings. The seventy-second staff is a guitar accompaniment line with "Cap." markings. The seventy-third staff is a vocal line with "Soli." and "Cap." markings. The seventy-fourth staff is a guitar accompaniment line with "Cap." markings. The seventy-fifth staff is a vocal line with "Soli." and "Cap." markings. The seventy-sixth staff is a guitar accompaniment line with "Cap." markings. The seventy-seventh staff is a vocal line with "Soli." and "Cap." markings. The seventy-eighth staff is a guitar accompaniment line with "Cap." markings. The seventy-ninth staff is a vocal line with "Soli." and "Cap." markings. The eightieth staff is a guitar accompaniment line with "Cap." markings. The eighty-first staff is a vocal line with "Soli." and "Cap." markings. The eighty-second staff is a guitar accompaniment line with "Cap." markings. The eighty-third staff is a vocal line with "Soli." and "Cap." markings. The eighty-fourth staff is a guitar accompaniment line with "Cap." markings. The eighty-fifth staff is a vocal line with "Soli." and "Cap." markings. The eighty-sixth staff is a guitar accompaniment line with "Cap." markings. The eighty-seventh staff is a vocal line with "Soli." and "Cap." markings. The eighty-eighth staff is a guitar accompaniment line with "Cap." markings. The eighty-ninth staff is a vocal line with "Soli." and "Cap." markings. The ninetieth staff is a guitar accompaniment line with "Cap." markings. The ninety-first staff is a vocal line with "Soli." and "Cap." markings. The ninety-second staff is a guitar accompaniment line with "Cap." markings. The ninety-third staff is a vocal line with "Soli." and "Cap." markings. The ninety-fourth staff is a guitar accompaniment line with "Cap." markings. The ninety-fifth staff is a vocal line with "Soli." and "Cap." markings. The ninety-sixth staff is a guitar accompaniment line with "Cap." markings. The ninety-seventh staff is a vocal line with "Soli." and "Cap." markings. The ninety-eighth staff is a guitar accompaniment line with "Cap." markings. The ninety-ninth staff is a vocal line with "Soli." and "Cap." markings. The hundredth staff is a guitar accompaniment line with "Cap." markings.

Alto.

48.

Handwritten musical score for Alto. The score consists of ten staves of music with lyrics written below the notes. The lyrics are in German and appear to be a hymn or religious text. The notation includes various musical symbols such as clefs, time signatures, notes, rests, and ornaments. There are some corrections and markings on the score, including crossed-out notes and additional markings.

Lyrics (from top to bottom):

... Aus dem Tüchlein
 ... in Zeit " " " in Zeitlich in Gifte ist,
 ... Hoffe ihm reinge und über alle maas
 ... wichtige Jochzeit über alle maas, wichtige Jochzeit
 ... o Jahr Jesu Vord
 ... mich über diese Zeit, das ist die Zeit " so ist gen Aufst,
 ... Jesu, das ist die Zeit " so will ich diesen Jesu, o Jesu
 ... Capell. ... ist die Zeit, Cap.
 ... ist die Zeit, die die Angewandte
 ... ist, wird die Zeit die Arbeit singe " Gen.



Mus. 2115-E-505

6



2. Cor cap.

Handwritten musical score for the second cornet part (2. Cor cap.). The score is written on four staves. The first staff begins with a treble clef, a key signature of one sharp (F#), and a common time signature (C). The lyrics are written below the notes: "Hoch Befehlshaber der Heere des Herrn, Amen an". The second staff continues the lyrics: "an my Amen an". The third staff includes the marking "Cap." above the staff and "piano." below it. The fourth staff ends with the lyrics "an my an". The score concludes with a double bar line and a repeat sign.

Tenore.

Handwritten musical score for Tenor voice. The score is written on 13 staves, each with a treble clef and a key signature of one sharp (F#). The lyrics are in German and include the following text:

Gott sein Erb' // " Ich bin, so zu // " Ich bin, so
 " " Ich bin, so zu // " Ich bin, so
 " " Ich bin, so zu // " Ich bin, so
 " " Ich bin, so zu // " Ich bin, so
 " " Ich bin, so zu // " Ich bin, so
 " " Ich bin, so zu // " Ich bin, so
 " " Ich bin, so zu // " Ich bin, so
 " " Ich bin, so zu // " Ich bin, so
 " " Ich bin, so zu // " Ich bin, so

Musical notations include: *3.*, *2.*, *27.*, *14.*, *24.*, *1.*, *4.*, *4.*, *piano.*, and various clefs and rests.



Basso.

40.

Sol.

* Die Welt ist Gottes Werk, so müde ist sie, so
 * ohne Anfang " " Ding ungeschaffen nicht, auch das, das berührt " ist
 * ungeschaffen, ungeschaffen berührt nicht. *Unser Trübsal*
 * Die Zeit der Trübsal ist, die Zeit " "
 * " Auf " " Trübsal ist Hoffen nicht nur über
 * alle maßlos trübselige Freude ist über alle maßlos trübselige Freude.
 * die Trübsal. *Alto Sol. Solig* " " ist der Mann, *solig*
 * " ist der Mann von der Anfang der Trübsal.
 * In der Trübsal berührt ist, wieder die Trübsal ist
 * Trübsal ungeschaffen, " " auf der Trübsal berührt ist, wieder
 * die Trübsal ist Trübsal ungeschaffen.



Mus. 2115-E-504

Handwritten musical score on a page with four staves. The top staff is a vocal line with lyrics in German: "Oberste Gottesknechte, die dem Herrn die Hände führen, Solo". The second and third staves are for instruments, possibly lute or guitar, with some notes and rests. The fourth staff is also for an instrument. The score includes various musical notations such as clefs, notes, rests, and dynamic markings like "Cap." and "Al.". The paper shows signs of age and wear.

22. 16. 10. 5.

Sopran in Lizen.

Ihr, wenn Trübsal / Sie Zeitlich und leicht ist, Sie
 Zeitlich und leicht ist, geschaffen nur zeitliche, und über alle
 Massen zeitliche Gerechtigkeit über alle Massen, zeitliche Gerechtigkeit,
 Zeitlich, selig ist, der Mann, der Sie die
 Christuszeit wird, "Tod, Wieder die Kreuz der Lebendigkeit,
 Sie, die, nach dem er versprochen ist, wieder die Erneuerung des Lebens

Mus. 2115-E-504



4. 8.

musikalisch
 Wolke Gott bewirkt hat unser, die ich lieb
 haben, Amen, a,
 "unser, Amen, a" "unser,
 Wolke Gott bewirkt hat
 Ihr die ich lieb hat, Amen, Amen, Amen
 piano
 Amen.

Also in Lips.

22. 26. 10. 5.

Mus. 2115-E-504



Handwritten musical notation on two staves. The top staff begins with a treble clef, a key signature of one sharp (F#), and a 3/4 time signature. The music consists of several measures with notes and rests. Below the first measure, there are handwritten annotations: "mp fa" with a slur over it, and "1. 2. 3. 4." above the staff. The second staff continues the melody with similar notation and includes the word "am" written below the notes. The notation is somewhat sketchy and appears to be a working draft.

22. 16. 10. 5.

Tenore in Rip.

Die Zeitlich - und leicht
 ist, die Zeitlich und leicht Zeit, flasset mich weise
 und über aller maß, weisliche Gerechtigkeit, über alle
 maß, weisliche Gerechtigkeit. Solig solig
 ist der Mann, der die Aufsehung erduldet,
 hinder die Erwunden Lebensmensch, Drum nach,

Mus. 2115-E-504

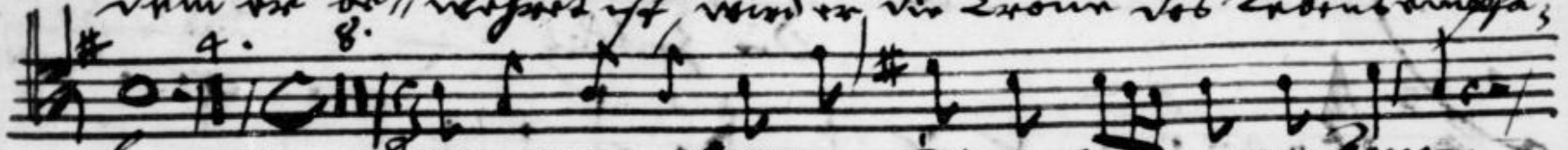


15





Im vorber, verfort ist, wird er die Exone des Eubensungsa,



4. 8. *gan.* Amm, amm, amm a" "mm, amm,



piano. Amm, amm, a" mm, Amm, Amm Amm, a" mm.

22. 16. 10. 5.

nur, wenn Erbsaal. Die Zeitlich, — und kürzte ist,

 die Zeitlich und kürzte ist, schaffet eine gewisse und über

 alle Maß, weisliche Gerichtigkeit, über alle Maß, weisliche Gerichtig-

 keit. Solig — ist der Mann, der die Aufsteigeren,

 bildet. Wird er die Exone des Erbes empfangen, dann nach

 dem er beauftragt ist, wird er die Exone des Erbes empfangen.

 Amen, A — — — — — Amen

Mus. 2115-E-504



Handwritten musical notation on a single staff. The notation includes a treble clef, a key signature of one sharp (F#), and a time signature of 4/4. The melody consists of several measures of music, with lyrics written below the notes. The lyrics are: "Linn, Linn, Linn, Linn, Linn, Linn, Linn, Linn, Linn, Linn." The word "Linn" is repeated ten times. The notation is written in a cursive hand. There is a first ending bracket above the first measure. The word "piano." is written above the final measure. The staff ends with a double bar line and a fermata.

piano.

Linn, Linn, Linn, Linn, Linn, Linn, Linn, Linn, Linn, Linn.

Violino I.

Handwritten musical score for Violino I. The score consists of 12 staves of music. The first staff begins with a large, decorative initial 'D' and the text 'See, vom Erubel'. The music is written in a single system with a treble clef and a key signature of one sharp (F#). The notation includes various rhythmic values, accidentals, and dynamic markings. There are several numbered measures (2, 3, 5, 6, 13) and some measures contain first and second endings. The final measure of the piece is heavily scribbled out with dark ink.



Mus. 2115-E-504

19

Handwritten musical score on four staves. The first staff contains a melodic line with various note values and rests. The second staff continues the melody with some dynamic markings and a fermata. The third staff shows a more complex rhythmic pattern with many sixteenth notes. The fourth staff begins with a few notes and the instruction "pian." below it.

Violino 2^o

Handwritten musical score for Violino 2^o. The score consists of ten staves of music. The first staff begins with a large, decorative initial 'D' and the tempo marking 'Crescendo Brillante'. The music is written in a key signature of one sharp (F#) and a common time signature (C). The notation includes various note values, rests, and performance markings such as slurs, accents, and fingerings (e.g., 2, 3, 5). The score concludes with a double bar line and repeat dots.



Mus. 2115-E-504

Handwritten musical notation on three staves. The first staff contains a melodic line with various note values and rests. The second staff features a more complex rhythmic pattern with some notes crossed out. The third staff continues the melodic line and includes the handwritten instruction "pian" at the end.

Viola I.

Der vom Beispiel

2.

3.

4.

5.

6.

7.

8.

9.

10.

11.

12.



5

Andante

Viola 2a

Capriccio, vom Erubel, p



Mus. 2115-E-504

25

IDS 1B4 1C4 1A4 1E 1G 1A5
A51C51B51 D41 A41 C41 B41 D31 A31

5.
piano.



Fagots.

Handwritten musical score for Bassoon (Fagots). The score consists of 13 staves of music. The notation includes various note values, rests, and dynamic markings such as *p* and *f*. There are also some handwritten annotations like "3", "5", "6", and "8" above the staves. The paper shows signs of age and wear.

Mus. 2115-E-504



AS1C51 RS1 P41 A41 C41 591 U31 A31

ID3 IB4 IC4 IA4 IF4 IG4 IA5

piano