

2^o Mus. pr. 3776 n^o 13.
7

LA GAVOTTE

DE VESTRIS,

Variée pour Lyre ou Guitare.

Suivie de Seize Nouvelles Variations

DES FOLIES D'ESPAGNE,

avec Accompagnement de Flûte ou Violon (ad libitum.)

DÉDIÉE

à M^{lle} Prudence Laforgue.

PAR J. B. BÉDARD,

Professeur.

Corbaux

ŒUVRE 39^{me}

PRIX 3^f. 60^{mes}

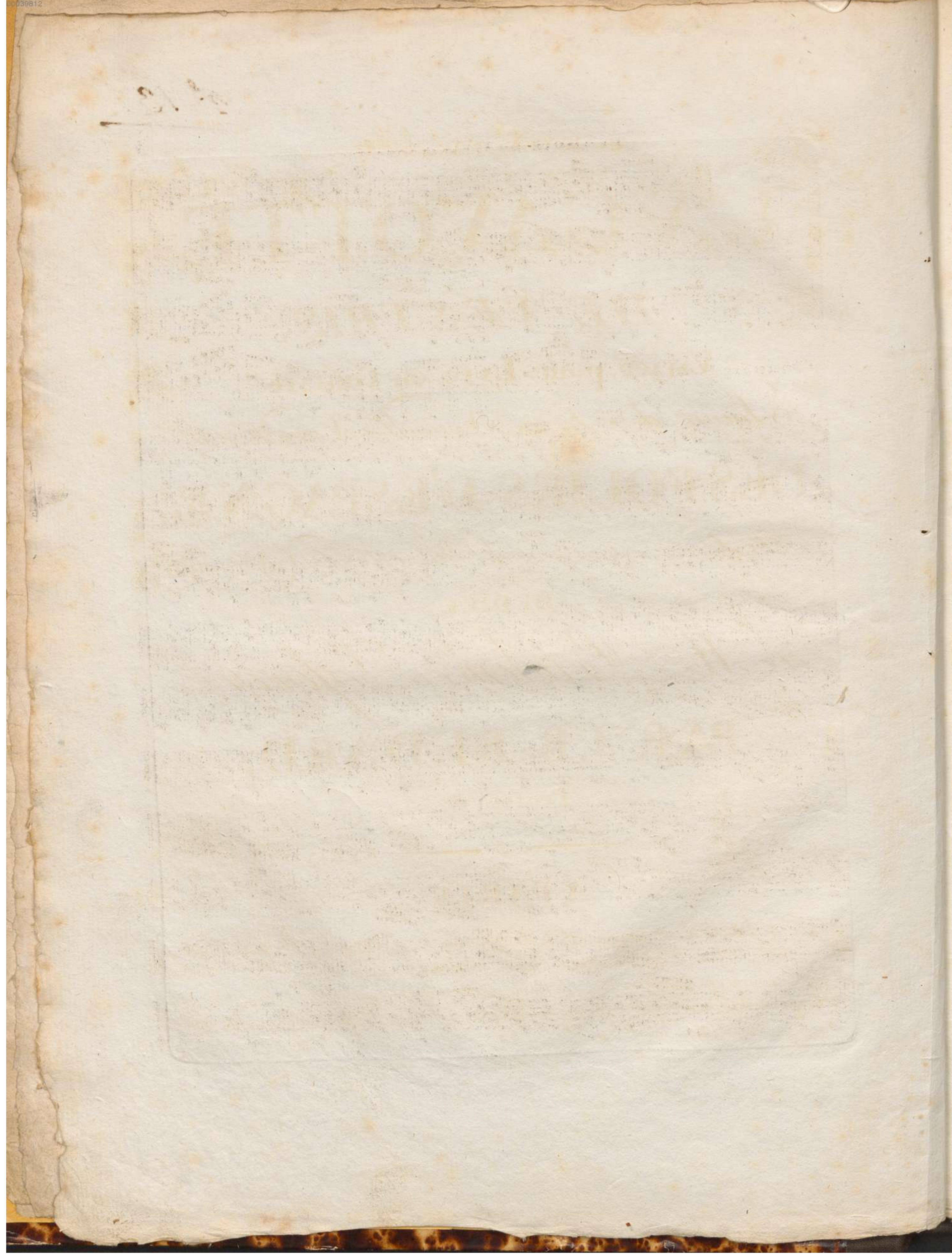
A PARIS

Chez CORBAUX, Editeur et M^d de Musique à la Lyre d'Or, Rue de Thionville N^o 28.

Entre le Théâtre des jeunes Elèves et la Rue d'Anjou.

Il tient un assortiment Complet de Pièces de Théâtre. Cordes de Naples. Papiers réglés, et se charge des Envoyes de Musiques et d'Instrumens pour les Départemens et l'Etranger, les Lettres et Dematudes lui seront Affranchies.

Enregistré à la bibliothèque Imp.^{le}



LA GAVOTE DE VESTRIS VARIÉE .

Lyre
ou
Guitare .

Tema

1^{re} Variation.

2^{eme} Variation.

LYRE ou GUITARE

3^{eme} Variation.

LYRE ou GUITARE

4^{eme} Variation.

Genre Marche

étouffez

Musical notation for the 4th variation, featuring a treble clef, key signature of two sharps (F# and C#), and a 2/4 time signature. The piece is in a march style. The notation includes various rhythmic patterns, including eighth and sixteenth notes, and rests. Dynamics include 'p' (piano) and 'étouffez' (muted).

5^{eme} Variation.

Musical notation for the 5th variation, featuring a treble clef, key signature of two sharps (F# and C#), and a 2/4 time signature. The piece is more technically demanding, featuring many sixteenth-note runs and triplets. Fingerings are indicated with numbers 1-5. Dynamics include 'f' (forte). The piece concludes with a double bar line and the word 'fin'.

AIR DES FOLIES D'ESPAGNE.

Lyre
ou
Guitare.

Tema

1^{ere} Variation.

2^{eme} Variation.

3^{eme} Variation.

4^{eme} Variation.

5^{eme} Variation.

5 3 1c

27

5 3 1c

6^{me} Variation.

The 6th variation consists of three staves of music. The first staff begins with a treble clef, a key signature of one flat (B-flat), and a 3/4 time signature. The music is written in a single melodic line with various rhythmic values and slurs. The second and third staves continue the melodic line, with the third staff ending with a double bar line and a repeat sign.

7^{me} Variation.

The 7th variation consists of three staves of music. The first staff begins with a treble clef, a key signature of one flat, and a 3/4 time signature. The music features a melodic line with frequent rests, indicated by double bar lines. The second and third staves continue the piece, with the third staff ending with a double bar line and a repeat sign.

8^{me} Variation.

The 8th variation consists of three staves of music. The first staff begins with a treble clef, a key signature of one flat, and a 3/4 time signature. This variation is characterized by frequent triplets, indicated by the number '3' above groups of notes. The second and third staves continue the melodic line, with the third staff ending with a double bar line and a repeat sign.

9^{me} Variation.

The 9th variation consists of four staves of music. The first staff begins with a treble clef, a key signature of one flat, and a 3/4 time signature. The music is written in a single melodic line with various rhythmic values and slurs. The second, third, and fourth staves continue the melodic line, with the fourth staff ending with a double bar line and a repeat sign.

10^{eme} Variation.

Musical notation for the 10th variation, consisting of three staves of music in 3/4 time with a key signature of one flat. The notation includes various rhythmic patterns and accidentals.

11^{eme} Variation.

Musical notation for the 11th variation, consisting of four staves of music in 3/4 time with a key signature of one flat. The notation features complex rhythmic patterns and fingerings.

12^{eme} Variation.

Musical notation for the 12th variation, consisting of four staves of music in 3/4 time with a key signature of one flat. The notation includes various rhythmic patterns and accidentals.

13^{eme} Variation.

Musical notation for the 13th variation, consisting of three staves of music in 3/4 time with a key signature of one flat. The notation includes various rhythmic patterns and accidentals.

14^{eme} Variation.

Musical notation for the 14th variation, consisting of four staves of music in 3/4 time with a key signature of one flat. The notation includes various rhythmic patterns and fingerings indicated by the number 6.

15^{eme} Variation.

Musical notation for the 15th variation, consisting of three staves of music in 3/4 time with a key signature of one flat. The notation includes various rhythmic patterns and fingerings.

16^{eme} Variation.

Musical notation for the 16th variation, consisting of five staves of music in 3/4 time with a key signature of one flat. The notation includes various rhythmic patterns, fingerings, and a dynamic marking of *ff*. The piece concludes with the word *fin*.

