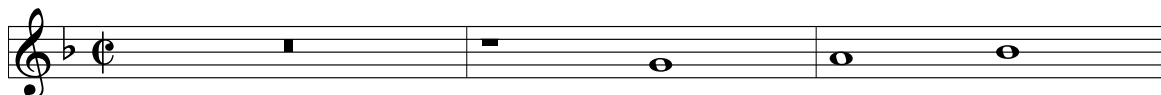


Fantasia ex g

(London, Royal College of Music ; Tenbury, St. Michael's College)

John Bull
(c. 1562 - 1628)

Treble Viol (c1)



28

28

A single musical staff in treble clef with one flat. It contains a sequence of notes: G4, A4, B4, C5, D5, E5, F5, G5, A5, B5, C6, D6, E6, F6, G6, A6, B6, C7. The notes are mostly whole notes, with some half notes at the beginning and end.

32

32

A single musical staff in treble clef with one flat. It contains a sequence of notes: G4, A4, B4, C5, D5, E5, F5, G5, A5, B5, C6, D6, E6, F6, G6, A6, B6, C7. The notes are mostly whole notes, with some half notes at the beginning and end.

36

36

A single musical staff in treble clef with one flat. It contains a sequence of notes: G4, A4, B4, C5, D5, E5, F5, G5, A5, B5, C6, D6, E6, F6, G6, A6, B6, C7. The notes are mostly whole notes, with some half notes at the beginning and end.

40

40

A single musical staff in treble clef with one flat. It contains a sequence of notes: G4, A4, B4, C5, D5, E5, F5, G5, A5, B5, C6, D6, E6, F6, G6, A6, B6, C7. The notes are mostly whole notes, with some half notes at the beginning and end.

44

44

A single musical staff in treble clef with one flat. It contains a sequence of notes: G4, A4, B4, C5, D5, E5, F5, G5, A5, B5, C6, D6, E6, F6, G6, A6, B6, C7. The notes are mostly whole notes, with some half notes at the beginning and end.

48

48

A single musical staff in treble clef with one flat. It contains a sequence of notes: G4, A4, B4, C5, D5, E5, F5, G5, A5, B5, C6, D6, E6, F6, G6, A6, B6, C7. The notes are mostly whole notes, with some half notes at the beginning and end.

51

51

A single musical staff in treble clef with one flat. It contains a sequence of notes: G4, A4, B4, C5, D5, E5, F5, G5, A5, B5, C6, D6, E6, F6, G6, A6, B6, C7. The notes are mostly whole notes, with some half notes at the beginning and end.

55

55

A single musical staff in treble clef with one flat. It contains a sequence of notes: G4, A4, B4, C5, D5, E5, F5, G5, A5, B5, C6, D6, E6, F6, G6, A6, B6, C7. The notes are mostly whole notes, with some half notes at the beginning and end. The staff ends with a double bar line and a repeat sign.