

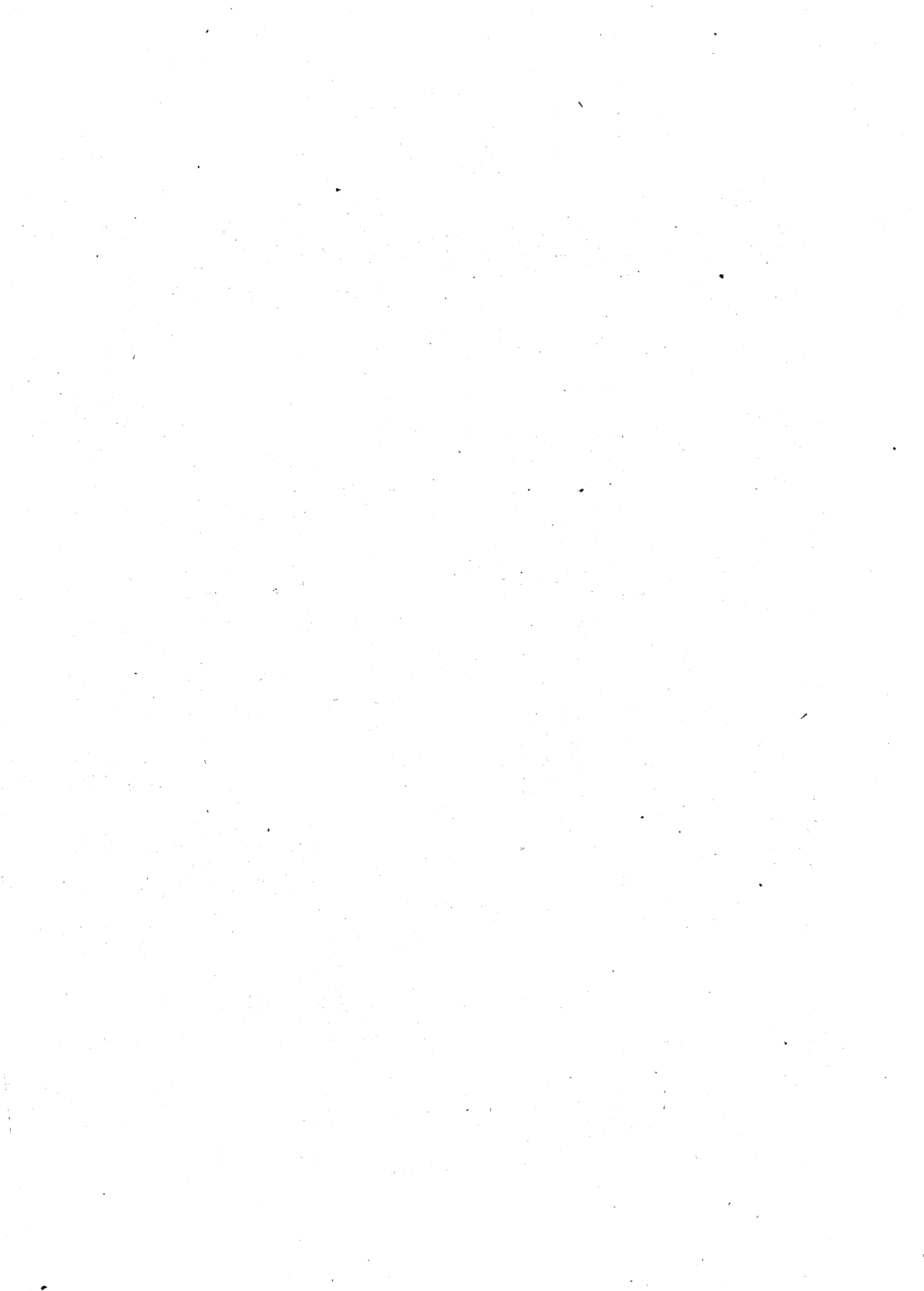
SIX
 QUATUORS
en Fugues
 A DEUX VIOLONS
 TAILLE & BASSE
Composés
Par
 M.J.G. ALBRECHTSBERGER,
Organiste de la Chapelle
Imperiale & Royale
à Vienne
 OEUVRE SECONDE

N^o. 495.

Price 75.

chés J. J. HUMMEL, à Berlin avec Privilège du Roi,
 à Amsterdam au Grand Magazin de Musique et aux Adresses ordinaires

178-77



Vault

565416

M

452

A341

Op. 2

b1 20151. Student - Hagnan 1800-7 fch.

VIOLINO PRIMO

SONATA I

Adagio maestoso

Musical score for the first movement of Sonata I, Adagio maestoso. It consists of seven staves of music in G major, 3/4 time. The first staff begins with a treble clef, a key signature of one flat, and a 3/4 time signature. Dynamics include *f*, *Poc.f*, *f*, *ff*, *P f*, and *PP*. The piece concludes with a double bar line.

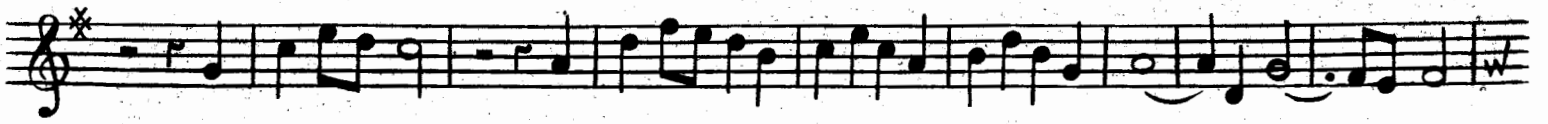
FUGA

Allegro

Musical score for the second movement of Sonata I, Fuga. It consists of four staves of music in G major, common time. The first staff begins with a treble clef, a key signature of one flat, and a common time signature. Dynamics include *f*. The piece concludes with a double bar line.

VIOLINO PRIMO

381 5



VIOLINO PRIMO

SONATA II

Mezza voce

Largo

Musical score for the first movement of Sonata II, Violino Primo. The score is written in C major, 2/4 time, and is marked *Largo*. It consists of ten staves of music. The first staff begins with *Mezza voce* and *Largo*. Dynamics include *f*, *mf*, *p*, and *Cres: f*. Performance instructions include *Dolce* and *tr* (trills). The piece concludes with a double bar line.

FUGA

Allegro moderato

Musical score for the second movement, *FUGA*, Violino Primo. The score is written in D major, 2/4 time, and is marked *Allegro moderato*. It consists of two staves of music. Dynamics include *f* and *p*. Performance instructions include *tr* (trills) and a triplet (3). The piece concludes with a double bar line.

VIOLINO PRIMO

383 7

This image shows a page of musical notation for the first violin part. It consists of ten staves of music, each beginning with a treble clef and a key signature of two sharps (F# and C#). The music is written in a single system and features a variety of rhythmic patterns, including eighth and sixteenth notes, often beamed together. There are several instances of trills, indicated by the letter 'tr' above the notes. The notation includes various accidentals (sharps, flats, naturals) and dynamic markings. The piece concludes with a double bar line and a final whole note chord. The page number '495' is printed in the bottom right corner.

VIOLINO PRIMO

SONATA III

Adagio *f*



Cres: *f* *Pf*



f 6



6 *b*



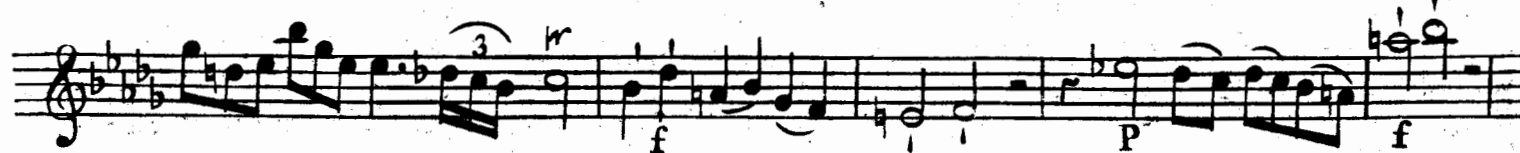
w




f *mf*



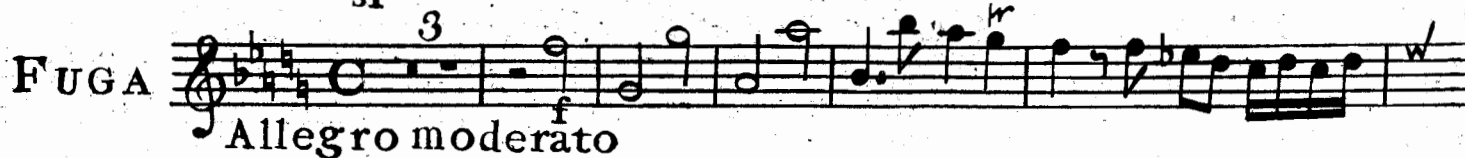
3 *r* *f* *P* *f*



P *sf* *P*



FUGA Allegro moderato



r *w*



w



w



VIOLINO PRIMO

387 9

This page of a musical score for Violino Primo contains 12 staves of music. The key signature is one flat (B-flat), and the time signature is 4/4. The music is characterized by intricate, fast-moving passages, including many sixteenth-note runs and slurs. The notation includes various ornaments such as trills (marked with 'tr') and grace notes. The score concludes with a double bar line and a fermata on the final note of the last staff.

VIOLINO PRIMO

SONATA IV

4 *mf:*
 Andante

FUGA *Vivace*

VIOLINO PRIMO

387 11

This image shows a page of musical notation for the first violin part. It consists of 12 staves of music, each beginning with a treble clef and a key signature of one flat (B-flat). The notation is dense, featuring a variety of rhythmic values including eighth, sixteenth, and thirty-second notes, as well as rests and slurs. There are several instances of trills and grace notes throughout the piece. The music concludes with a double bar line and repeat dots. The page number '495' is printed in the bottom right corner.

VIOLINO PRIMO

SONATA V

4 *mf* *r* *3*

Andantino

f *P* *Cres:* *mf*

f *Dolce*

f *Dolce*

sf

P *Cres f* *P* *Cres: f* *Dolce* *Dolce*

f *P* *PP*

5 *r*

FUGA

Allegro moderato

VIOLINO PRIMO

389 13

This page of a musical score for Violino Primo contains 11 staves of music, numbered 389 to 495. The music is written in a single system with a treble clef and a key signature of one sharp (F#). The notation includes various rhythmic values, accidentals (sharps, flats, naturals), and dynamic markings such as *ff* (fortissimo) and *tr* (trill). The score concludes with a double bar line and a repeat sign. A circled number '389' and the page number '13' are located in the upper right corner.

VIOLINO PRIMO

SONATA VI

Adagio *P* Cres: *f* *mf*

Dolce Cres. *f* *mf* *f*

P *f*

FUGA

Moderato

VIOLINO PRIMO

391 15

This page of a musical score for Violino Primo consists of 12 staves of music. The key signature is two flats (B-flat and E-flat), and the time signature is 3/4. The music is written in a single melodic line on a treble clef. The notation includes various rhythmic values such as eighth and sixteenth notes, often beamed together, and rests. There are several dynamic markings, including 'w' (pizzicato) and 'r' (ritardando), and articulation marks like accents and slurs. A first ending bracket is present on the 11th staff, leading to a final cadence marked 'Fine' on the 12th staff. The page number '495' is printed in the bottom right corner.