

Suite à 5

Düben collection IMHS 3:12

Johann Wilhelm Furchheim
c. 1635 – 1682

Published by Johan Tufvesson.

Non-commercial copying welcome

Revision : 1.11

Suite à 5

J.W. Furchheim (c.1635–1682)

Præludium

Musical score for the Præludium, measures 1 through 14. The piece is in G major (one sharp) and common time (C). The notation is in bass clef. Measures 1-4 are simple quarter notes. Measures 5-8 show eighth notes and a quarter rest. Measures 9-14 include a melodic line with a slur over measures 12-13 and a fermata over the final note in measure 14.

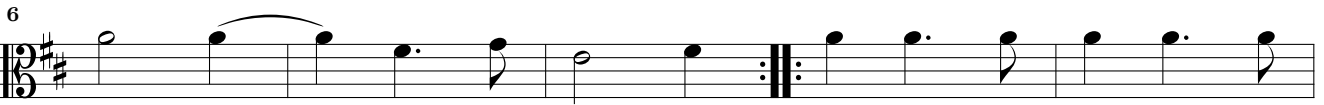
Alemande

Musical score for the Alemande, measures 1 through 13. The piece is in G major (one sharp) and common time (C). The notation is in bass clef. Measures 1-4 show a rhythmic pattern of quarter and eighth notes. Measures 5-8 feature a sequence of eighth notes. Measures 9-13 continue the rhythmic pattern with various note values and a repeat sign at the end.

Courant

Musical score for the Courant, measures 1 through 21. The piece is in G major (one sharp) and 3/4 time. The notation is in bass clef. Measures 1-4 show a rhythmic pattern of quarter and eighth notes. Measures 5-8 feature a sequence of eighth notes. Measures 9-13 continue the rhythmic pattern with various note values and a repeat sign at the end. Measures 14-17 show a melodic line with a slur over measures 16-17. Measures 18-21 continue the melodic line with a slur over measures 20-21 and a fermata over the final note.

Saraband



Gigue

