

Luigi Boccherini
Symphony No. 23 in D Minor, Op. 37, No. 3

BASSOON 1

ALLEGRO MODERATO

pp

f

p DOLCISS.

f

pp

f

B Solo
DOLCE

f

f

Soli
DOLCISS.

ff

D Solo
p

f

Boccherini — Symphony No. 23

2

E BSN. 1

Musical score for Bassoon 1, measures 2-11. The score is written on a single staff with a treble clef and a key signature of one flat (B-flat). The tempo is marked '2'. The score includes various dynamics and performance instructions:

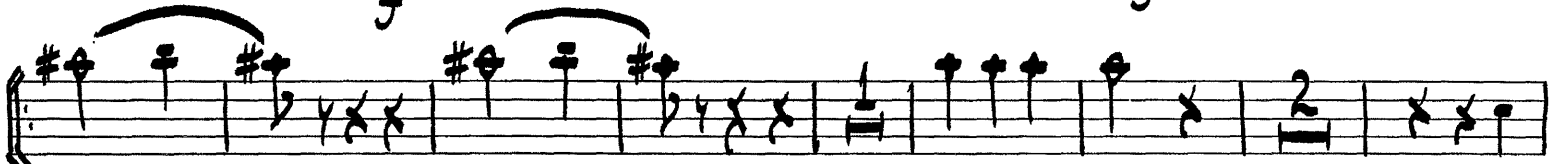
- Measure 2: *f*
- Measure 3: *DOL. cresc.*
- Measure 4: *f*
- Measure 5: *p*
- Measure 6: *f*
- Measure 7: *DOL.*
- Measure 8: *f*
- Measure 9: *SOLI*
- Measure 10: *DOLCISS.*
- Measure 11: *f*

Rehearsal marks are indicated by boxed letters: **E** at the start of measure 2, **F** at the start of measure 5, **G** at the start of measure 9, and **H** at the start of measure 11. The score concludes with a double bar line at the end of measure 11.

MINUETTO CON MOTO

BSN. 1

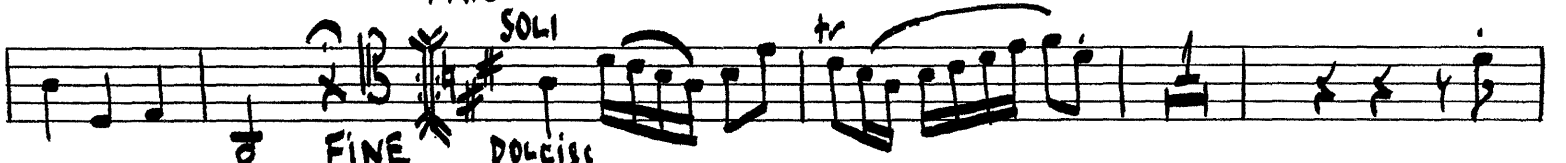
3



DOLCISS.

TRIO

SOLI



FINE

DOLCISS.



rit. *f*.

D.C. MINUETTO

ANDANTE AMOROSO



Boccherini — Symphony No. 23

BSN 1

4

A

pp

B

dolc. f p cresc. f

pp dolc. poco f p pp poco f D.C. AL FINE

FINALE

ALLEGRO VIVO, MA NON TANTO PRESTO

f dolc. f

1 SOLI

f

2 p

f

ALLEGRO MODERATO

BASSOON 2

Handwritten musical notation on a single staff. It begins with a bass clef, a key signature of one flat (B-flat), and a common time signature (C). The music consists of a series of eighth and sixteenth notes, some with accents. A dynamic marking of *pp* (pianissimo) is written below the first few notes.

Handwritten musical notation on a single staff. It begins with a key signature of two sharps (F# and C#) and a common time signature (C). The music features a mix of eighth and sixteenth notes. A dynamic marking of *f* (forte) is written below the first few notes. A boxed letter 'A' is placed above the staff towards the end of the line.

Handwritten musical notation on a single staff. It begins with a bass clef and a key signature of one flat (B-flat). The music consists of eighth and sixteenth notes. Dynamic markings of *pp* and *f* are present below the staff.

Handwritten musical notation on a single staff. It begins with a bass clef and a key signature of one flat (B-flat). The music features a sequence of eighth notes followed by a series of quarter notes. A dynamic marking of *f* is written below the staff.

Handwritten musical notation on a single staff. It begins with a bass clef and a key signature of one flat (B-flat). The music consists of eighth and sixteenth notes. Dynamic markings of *pp* and *f* are present below the staff. A boxed letter 'B' is placed above the staff towards the end of the line.

Handwritten musical notation on a single staff. It begins with a bass clef and a key signature of one flat (B-flat). The music features a mix of eighth and sixteenth notes. A boxed letter 'C' is placed above the staff towards the beginning of the line.

Handwritten musical notation on a single staff. It begins with a bass clef and a key signature of one flat (B-flat). The music consists of eighth and sixteenth notes. A dynamic marking of *ff* (fortissimo) is written below the staff. A boxed letter 'D' is placed above the staff towards the beginning of the line.

Handwritten musical notation on a single staff. It begins with a bass clef and a key signature of one flat (B-flat). The music features a mix of eighth and sixteenth notes. Dynamic markings of *pp* and *f* are present below the staff.

Boccherini — Symphony No. 23

BSN. 2

TRIO *p* FINE

This staff contains the beginning of the Trio section. It starts with a treble clef, a key signature of one sharp (F#), and a 3/4 time signature. The music consists of a series of eighth and sixteenth notes, with some notes marked with an 'x' to indicate they are not to be played. The section ends with a double bar line and the word 'FINE'.

ANDANTE AMOROSO D.C. MINUETTO

This staff contains the beginning of the Andante Amoro section. It starts with a bass clef, a key signature of one sharp (F#), and a 3/4 time signature. The music is primarily composed of whole and half notes. The section concludes with a double bar line and the instruction 'D.C. MINUETTO'.

pp A

This staff is the first system of the Andante Amoro section. It begins with a bass clef, a key signature of one sharp (F#), and a 6/8 time signature. The music features a melodic line with some notes marked with 'y' and 'x'. A first ending bracket labeled 'A' spans the final two measures.

FINE *dol.* *f* B *cresc.*

This staff is the second system of the Andante Amoro section. It starts with a double bar line and the word 'FINE'. The music continues with a melodic line, including notes marked with 'y' and 'x'. A second ending bracket labeled 'B' spans the final two measures. Dynamics include *dol.*, *f*, and *cresc.*

p *pp* D.C. AL FINE

This staff is the third system of the Andante Amoro section. It begins with a melodic line and ends with a double bar line and the instruction 'D.C. AL FINE'. Dynamics include *p* and *pp*.

FINALE
ALLEGRO VIVO. MA NON TANTO PRESTO

f *dol.* *f*

This staff is the first system of the Finale section. It starts with a bass clef, a key signature of one sharp (F#), and a 2/4 time signature. The music is more rhythmic, featuring eighth and sixteenth notes. Dynamics include *f*, *dol.*, and *f*.

1 *Soli* *p dol.*

This staff is the second system of the Finale section. It begins with a first ending bracket labeled '1'. The music continues with a melodic line, including notes marked with 'y' and 'x'. Dynamics include *Soli* and *p dol.*

f

This staff is the third system of the Finale section. It continues the melodic line with notes marked with 'y' and 'x'. The section concludes with a double bar line and a fermata. Dynamics include *f*.

Boccherini — Symphony No. 23

4

BSN. 2

2

3

4

5

6 Soli

7

The image shows a page of handwritten musical notation for Boccherini's Symphony No. 23. The score is written on ten staves. At the top, there is a measure number '4' and the text 'BSN. 2'. A circled number '2' is placed above the second staff. The notation includes various rhythmic values, accidentals, and dynamic markings such as 'f' (forte), 'p' (piano), and 'ff' (fortissimo). Trills are indicated with 'tr' above notes. A 'Soli' section is marked with a circled '6' and a 'p' dynamic. A circled '7' appears above the final staff. The music is written in a style characteristic of the late 18th or early 19th century, with a focus on melodic and rhythmic patterns.

Boccherini — Symphony No. 23

DSN. 2

