

MUSETTE in G

for Trumpet & Organ

Score (01':58")

Louis - Claude Daquin (1694 - 1772)

Arr. Michel Rondeau

Refrain - Allegro ♩ = 120

Trumpet in C

Organ

play 2X only

Couplet I

C Tpt.

Org.

play 2X only

C Tpt.

Org.

play 2X only

Refrain

C Tpt.

Org.

play 2X only

Detailed description: This system contains the first system of music for the Refrain. The C Tpt. part is in treble clef with a key signature of one sharp (F#) and a common time signature. It features a melodic line with eighth and sixteenth notes, starting with a repeat sign. The Organ part is in grand staff (treble and bass clefs) with the same key signature and time signature. It features a rhythmic accompaniment of eighth notes in the bass and a melodic line in the treble. A bracket above the organ part is labeled "play 2X only".

Couplet II

C Tpt.

Org.

play 2X only

Detailed description: This system contains the second system of music for the Couplet II. The C Tpt. part continues the melodic line from the previous system, ending with a fermata. The Organ part continues the rhythmic accompaniment and melodic line. A bracket above the organ part is labeled "play 2X only".

C Tpt.

Org.

play 2X only

Detailed description: This system contains the third system of music for the Couplet II, starting at measure 20. The C Tpt. part has a rest for the first measure, then continues the melodic line. The Organ part continues the accompaniment. A bracket above the organ part is labeled "play 2X only".

Refrain

C Tpt.

Org.

play 2X only

1. 2.

Detailed description: This system contains the fourth system of music for the Refrain, starting at measure 25. The C Tpt. part has a rest for the first measure, then continues the melodic line. The Organ part continues the accompaniment. A bracket above the organ part is labeled "play 2X only". The system concludes with two first endings, labeled "1." and "2.", which lead to the end of the piece.

MUSETTE in G

for Trumpet & Organ

Trumpet in C

Louis - Claude Daquin (1694 - 1772)
Arr. Michel Rondeau

Refrain - Allegro ♩ = 120



Couplet I



Refrain



Couplet II



25 Refrain



MUSETTE in G

for Trumpet & Organ

Trumpet in A

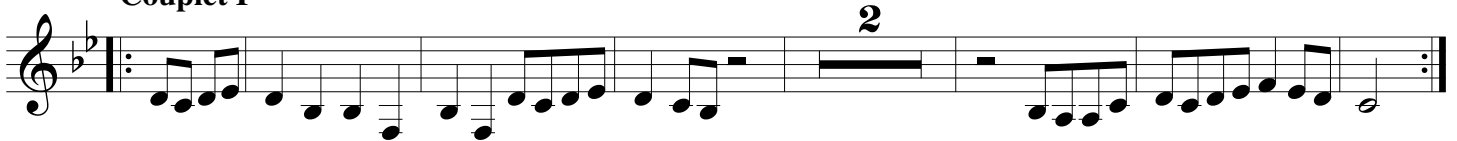
Louis - Claude Daquin (1694 - 1772)

Arr. Michel Rondeau

Refrain - Allegro ♩ = 120



Couplet I



Refrain



Couplet II



25

Refrain



MUSETTE in G

for Trumpet & Organ

Trumpet in D

Louis - Claude Daquin (1694 - 1772)
Arr. Michel Rondeau

Refrain - Allegro ♩ = 120



Couplet I



Refrain



Couplet II



25 Refrain



MUSETTE in G

for Trumpet & Organ

Louis - Claude Daquin (1694 - 1772)
Arr. Michel Rondeau

Organ

Trumpet in C

Refrain - Allegro ♩ = 120
play 2X only

Organ

Detailed description: This system shows the first system of the piece. The Trumpet in C part is on a single staff in G major, 4/4 time, starting with a repeat sign. The Organ part consists of two staves (treble and bass clef) in G major, 4/4 time. The organ part features a rhythmic accompaniment of eighth notes in the bass and a melody of eighth and sixteenth notes in the treble. A bracket above the organ part indicates a 'play 2X only' section.

C Tpt.

Couplet I
play 2X only

Org.

Detailed description: This system shows the second system. The C Trumpet part is on a single staff in G major, 4/4 time. The Organ part consists of two staves in G major, 4/4 time. The organ part features a rhythmic accompaniment of eighth notes in the bass and a melody of eighth and sixteenth notes in the treble. A bracket above the organ part indicates a 'play 2X only' section.

C Tpt.

9

9

Org.

play 2X only

Detailed description: This system shows the third system. The C Trumpet part is on a single staff in G major, 4/4 time, starting at measure 9. The Organ part consists of two staves in G major, 4/4 time, also starting at measure 9. The organ part features a rhythmic accompaniment of eighth notes in the bass and a melody of eighth and sixteenth notes in the treble. A bracket above the organ part indicates a 'play 2X only' section.

MUSETTE in G - Daquin - Organ

C Tpt.

Refrain
play 2X only

C Tpt.

Couplet II
play 2X only

C Tpt.

play 2X only

C Tpt.

Refrain
play 2X only

1. 2.