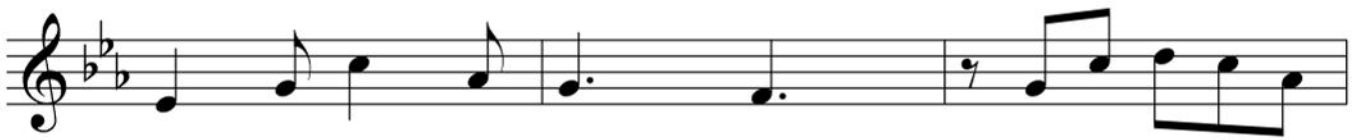


Sketches for the 10th Symphony  
Beethoven-Haus Bonn

The image displays seven staves of musical notation for sketches for the 10th Symphony. The music is written in B-flat major (two flats) and 2/4 time. The first staff begins with a treble clef and a dynamic marking of *ff* (fortissimo) above a fermata. Below the staff, a trill is indicated with the letters "tr". The second staff features a sharp sign (#) above a note. The fifth staff has a dynamic marking of *f* (forte). The seventh staff has dynamic markings of *sf* (sforzando) under the first two notes. The notation includes various rhythmic values, slurs, and articulation marks.



# Sketches for the Symphony No.10 in C minor by Ludwig van Beethoven

Sketches in 1825/1826  
Zweite Beethoveniana by Gustav Nottebhom  
Staatsbibliothek zu Berlin

## Andante



## Scherzo

### Presto



## Finale

