

THE
Sufferings of the
QUEEN OF FRANCE,

— *A Musical Composition,* —

Expressing the feelings of the unfortunate

— MARIE ANTOINETTE, —

During her Imprisonment, Trial, &c.

The Music, adapted for the Piano Forte, or Harpsichord

Composed by

J. L. DUSSEK.

Ent^d at Stationers Hall

Printed for Corri & C^o Music sellers to her Majesty, Edinburgh,

and N^o 67, Dean Street, Soho. —

Op. 23.

Pr. 2^s. 6^d

LATELY PUBLISHED BY M^r DUSSEK

3 SONATAS Op: 20. for Piano Forte with Accomp ^{ts} for Violin & Violoncello	Pr: 7. 6.	s. d.
A Grand Concerto Op: 22. for the Piano Forte with Additional Keys also adapted for any other Piano Forte with Accompaniments - - - - -	6. 0.	
O dear what can the matter be A RONDO - - - - -	1. 6.	
Within a mile of Edinburgh a Scots Air with Variations - - - - -	1. 0.	
Rosline Castle with Variations Pr: 1. GOD save the KING D ^o - - - - -	1. 0.	

The QUEEN'S IMPRISONMENT

Nº 1.

Largo

SHE REFLECTS ON HER FORMER GREATNESS

Nº 2

Maestosa-
mente

ppmo

THEY SEPARATE HER FROM HER CHILDREN.

Nº 3
Agitato
Afsai

Cresc. *Dim:*

rf p rf p rf

rf rf rf pp Cresc: sf

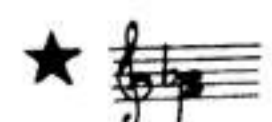
sf p

rf p pp

The Farewell of her Children

Smorzando

And.te Pianiº



THEY PRONOUNCE THE SENTENCE OF DEATH.

Nº 4
Allegro
con furia

HER RESIGNATION TO HER FATE

Nº 5.
Adagio
Innocente

THE SITUATION and REFLECTIONS the NIGHT before HER EXECUTION

Nº 6
Andante
Agitato

5

rf

rf

f

[dim.]

[P]

f

ff

The Guards come to conduct her to the place of Execution.
They enter the Prison door

ff

sf

pp

p

Nº 7

MARCH

Lento

rf

rf

pp

f

rf

Smorzando

THE SAVAGE TUMULT OF THE RABBLE.

Nº 8

Presto Furioso

Musical score for 'THE SAVAGE TUMULT OF THE RABBLE'. It consists of four systems of piano accompaniment. The first system is in 3/4 time, marked *ff*. The second system features a change in key signature to one sharp (F#) and includes a *ff* dynamic marking. The third system continues the piece with various rhythmic patterns. The fourth system concludes with a double bar line.

The QUEEN'S INVOCATION to the ALMIGHTY just before her DEATH

Nº 9

Molto Adagio

Musical score for 'The QUEEN'S INVOCATION to the ALMIGHTY just before her DEATH'. It consists of three systems of piano accompaniment. The first system is in 3/4 time, marked *p*, and includes the instruction 'Devotamente'. The second system features a change in key signature to two sharps (F# and C#) and includes *rf* dynamic markings. The third system concludes with a double bar line and the instruction 'Segue Subito'.

The Guillotine drops

Musical score for 'The Guillotine drops' in G major, 2/4 time. The piece begins with a fortissimo (*ff*) dynamic and a rapid, descending scale in the right hand. The tempo is marked *pmo* (poco mosso). The score includes a *Slentando* section and concludes with a *Siege Subito* section.

The APOTHEOSIS

Nº 10
 Allegro
 Maestoso

Musical score for 'The APOTHEOSIS' in C major, 2/4 time. The tempo is marked *Allegro Maestoso*. The score begins with a pianissimo (*pp*) dynamic and features a variety of dynamics including *rf* (ritardando forte), *ff* (fortissimo), *p* (piano), and *ffmo* (fortissimo mosso). The piece is characterized by dense, rapid sixteenth-note passages in both hands, with a key signature change to D major indicated by a sharp sign on the F line.

The image shows a page of piano sheet music, likely from a 19th-century collection. It consists of seven systems of two staves each (treble and bass clef). The music is written in a style characteristic of the Romantic era, with complex textures and dynamic markings.

- System 1:** Starts with a *p* dynamic. The first staff has a *dolce* marking. The second staff has an *rf* marking.
- System 2:** Features a *ff* marking in the first staff.
- System 3:** Continues the melodic and harmonic development.
- System 4:** Shows a *Cresc:* marking in the first staff.
- System 5:** Features a *ff* marking in the second staff.
- System 6:** Features a *fmo* marking in the first staff.
- System 7:** Ends with a *Diminuendo* marking in the first staff.