

VIOLONCELLO

2

Carl Nielsen  
Symphony No. 5

Tempo giusto  $\text{♩} = 100$

11 11 10

1 2 I  
Cor. in F

3 5 4 1  
Vla. *f* *dim.* *con sord.* *p*

2 3 4 5 6 7 8 9 10

11 12 5 *mp* *mf*

2 6 1  
*p* *molto dim.* *PPP*

2 2

7 8 5  
*mfz* *fp* *fp* *sffz* *p* *fz*

9 5  
*p* *fp* *molto dim.* *PPP*

10 1 1  
*pp* *mf* *dim.* *p* *pp* *V*

4 1 1 1 1 1 1 1 1 1 1  
Timp. *f* *senza sord.* *f* *pizz.*

1-49 11 2 3 4 5 6 7 8 9 10 11

*f* sempre *ff* sempre

VIOLONCELLO

12 13 14 15 16 17 18 19 20 21 22 23

*ff sempre f sempre* *f sempre* *sempre ff*

24 25 26 27 28 29 30 31 32 33 34

*ff sempre* *ff sempre*

35 36 37 38 39 40 41 42 43

*ff sempre*

44 45 46 47 48 49

*f* *dim.*

*poco a poco tranqu.* **16** *Tranquillo*

*ppp* *arco* *ffz* *mp* *fz*

**17** *fz* *mf* *fz*

**18** *fz* *mf* *ffz* *mf* *fz*

**19** *fz* *mf* *fz* *mf* *fz* *mf*

*ffz* *mf* *fz* *mf* *ffz* *mf*

**20** *ffz* *mf* *fz* *mf* *fz*

*mp* *dim. molto* **21** *ppp*

VIOLONCELLO

4

Violoncello musical score, measures 21-25. The score is written in bass clef with a key signature of two flats. It features various dynamics including *ffz*, *sempref*, *fz*, *mf*, *p*, and *ffz*. Measure numbers 22, 23, 24, and 25 are indicated in boxes. Performance markings include *cresc.*, *espr.*, and *pp*. The piece concludes with a *rall.* marking and a final chord.

*Adagio non troppo*

Piano accompaniment musical score, measures 21-25. The score is written in bass clef with a key signature of two flats. It features dynamics including *div mf* and *p*. Measure numbers 21, 22, 23, 24, and 25 are indicated in boxes. The piece concludes with a *rall.* marking.

Violoncello musical score, measures 26-30. The score is written in bass clef with a key signature of two flats. It features dynamics including *p* and *mf*. Measure numbers 26, 27, 28, 29, and 30 are indicated in boxes. The piece concludes with the marking *(poco pesante)*.

VIOLONCELLO

Measures 27-28. The first staff (bass clef) contains the main melodic line with dynamic markings *mp* and *a tempo*. The second staff (bass clef) provides accompaniment. Measure 27 is marked with a *v* (accents) and *nall.* (rallentando). Measure 28 is marked with *mp* and *a tempo*.

Measures 28-29. The first staff (bass clef) continues the melodic line. The second staff (bass clef) has a sustained chord. Measure 28 is marked with *mp* and *a tempo*. Measure 29 is marked with *mp* and *a tempo*.

Measure 29. The first staff (bass clef) features a melodic line with *unis.* (unison) and *f* (forte) dynamics. The second staff (bass clef) has a sustained chord. Measure 29 is marked with *f* and *cresc.* (crescendo).

Measure 29. The first staff (treble clef) features a melodic line with *ff* (fortissimo) dynamic. The second staff (bass clef) has a sustained chord. Measure 29 is marked with *ff*.

Measure 30. The first staff (treble clef) features a melodic line with *fz* (forzando) dynamic. The second staff (bass clef) has a sustained chord. Measure 30 is marked with *fz*.

Measure 30. The first staff (bass clef) features a melodic line with *dim.* (diminuendo) and *mp* (mezzo-piano) dynamics. The second staff (bass clef) has a sustained chord. Measure 30 is marked with *dim.* and *mp*.

Measure 31. The first staff (bass clef) features a melodic line with *quasi rall.* (quasi-rallentando) and *a tempo* markings. The second staff (bass clef) has a sustained chord. Measure 31 is marked with *quasi rall.*, *a tempo*, *dim.*, *pp*, *p*, and *cresc.*

Measure 32. The first staff (bass clef) features a melodic line with *mf* (mezzo-forte) and *dim.* dynamics. The second staff (bass clef) has a sustained chord. Measure 32 is marked with *mf* and *dim.*

Measure 33. The first staff (bass clef) features a melodic line with *cresc.* (crescendo) and *f* (forte) dynamics. The second staff (bass clef) has a sustained chord. Measure 33 is marked with *cresc.* and *f*.

**VOLONCELLO**

6

*ff* *pp* *ff*

[34] *pp* *ff* *pp*

[35] *ff* *sempre ff* *sempre ff*

*simile*

[36] *ff*

[37] *fff*

[38] *dim.*

*Tranquillo*

[39] *dim.* *ppp* *dim.* *pppp*

VIOLONCELLO

Allegro  $\text{♩} = 72-76$

II

7

*f fz*

*f*

*ff*

*f*

*ff*

*mf* *p* *cresc.*

*f*

*dim.* *p* *p cant.*

*f* *pp spicc.*

*cresc.*

*molto cresc.* *ff*

G. P. 1

VOLONCELLO

*ff marc. marc.*

**50** *f cant.*

*cresc. ff fz **51***

*fz fz*

**52** *ppp f*

*dim. p*

*dim. molto dim.*

*ppp sempre ppp*

**53** *sempre spicc.*

**54** *sempre ppp*

VIOLONCELLO



55

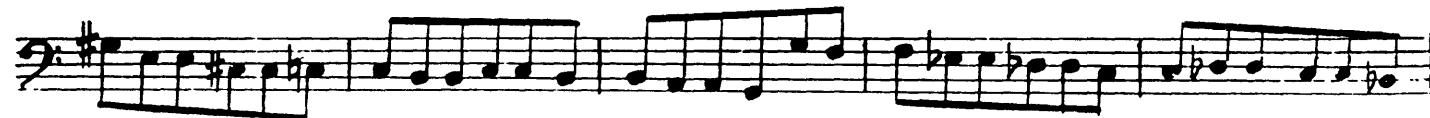


56



cresc. poco a poco

57



58



59





VIOLONCELLO

ffz

ffz

60

ffz

ffz

61

ffz

ffz

62

ffz

ffz

ffz

63

ffz

64

Un poco piu mosso

ffz

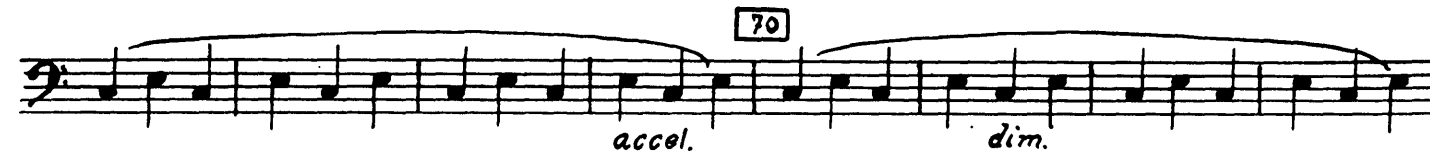
mf

mp

65

dim. poco a poco

VIOLONCELLO



VOLONCELLO

71 *Presto* 12

vi. II 72 *p*

73 12 74 15 75 11 76 10 77 *Timp.* *ff* *mf*

78 *5 senza sord.* *f*

79 *mf*

*mf leggiero*

80

81 *mf sempre*

82 2

VIOLONCELLO

First musical staff, starting with a bass clef and a key signature of two flats. It contains a melodic line with a dynamic marking of *f marc.* and a *mf* marking.

83

Second musical staff, starting with a bass clef and a key signature of two flats. It contains a melodic line with a dynamic marking of *leggiero*.

Third musical staff, starting with a bass clef and a key signature of two flats. It contains a melodic line.

84

Fourth musical staff, starting with a bass clef and a key signature of two flats. It contains a melodic line.

Fifth musical staff, starting with a bass clef and a key signature of two flats. It contains a melodic line.

Sixth musical staff, starting with a bass clef and a key signature of two flats. It contains a melodic line.

85

Seventh musical staff, starting with a bass clef and a key signature of two flats. It contains a melodic line with a dynamic marking of *cresc.*

Eighth musical staff, starting with a bass clef and a key signature of two flats. It contains a melodic line.

86

Ninth musical staff, starting with a bass clef and a key signature of two flats. It contains a melodic line with a dynamic marking of *f*.

Tenth musical staff, starting with a bass clef and a key signature of two flats. It contains a melodic line.

87

Eleventh musical staff, starting with a bass clef and a key signature of two flats. It contains a melodic line with a dynamic marking of *ffz* and a measure number of 11.

VIOLONCELLO

88 *ff*

89 *cresc.* *fff*

90 1 2 3 4 5 6 *fffz* *sempreff*

7 8 9 10 11 12 13 14

15 16 17 18 19 20 21 22 *dim.* *mf* *pp* *(d.-d)*

23 24 25 26 *poco rall.* 27 28 29 30 31 *molto rall.* 32 33

34 35 36 *dim.* *ppp* *dim.* *pppp* **92** *Andante un poco tranquillo* *con sord.* *mp*

7 9 **93** *mp*

*espr.* *f*

**95** *mp*

**96** *p*

VIOLONCELLO

97 *senza sord.*  
*ff cant.*

98 *sempre ff*

99 *Allegro (Tempo I)*  
*ff*

100

101 *ff*

102 *ff*

103 *f cant.*

104 *cresc.* *ff fz*

*fz fz* *ff*

VIOLONCELLO

105

Two staves of musical notation for measures 105 and 106. The first staff begins with a *mf* dynamic marking. The music consists of eighth and sixteenth notes with various accidentals.

106

Two staves of musical notation for measures 106 and 107. The music continues with eighth and sixteenth notes.

107

Two staves of musical notation for measures 107 and 108. The first staff begins with a *p* dynamic marking. The music features a steady eighth-note pattern.

108

Two staves of musical notation for measures 108 and 109. The music continues with eighth and sixteenth notes.

109

Two staves of musical notation for measures 109 and 110. The music continues with eighth and sixteenth notes.

110

Two staves of musical notation for measure 110. The music concludes with a double bar line and a fermata over the final note.

VOLONCELLO

ff

111

ff mf ff ffp

112 sempre marc.

cresc.

113 Poco allarg.

f

114 poco a poco allarg.

fff