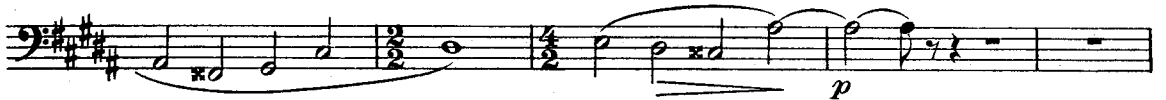


Douze chants et basses d'harmonie

FLORENT SCHMITT

I
Basse

Grave



Expr.



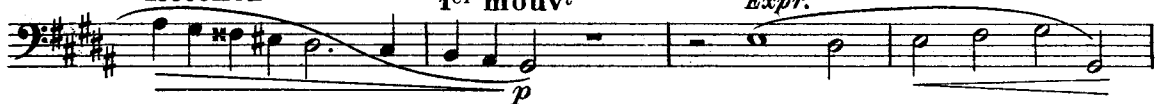
Animez un peu



Retenez

1er mouvt

Expr.



Un peu élargi



II
Chant

Calme, sans lenteur

Musical score for the first part of the Chant section, measures 1-14. The music is in G major and 3/4 time. It features a melodic line with various dynamics and articulations. The first measure starts with a piano (*p*) dynamic and a triplet of eighth notes. The second measure has a triplet of eighth notes. The third measure has a triplet of eighth notes and a crescendo (*cresc.*) marking. The fourth measure has a triplet of eighth notes and a crescendo (*cresc.*) marking. The fifth measure has a forte (*f*) dynamic and a crescendo (*cresc.*) marking. The sixth measure has a piano (*p*) dynamic and a crescendo (*cresc.*) marking. The seventh measure has a forte (*f*) dynamic and a crescendo (*cresc.*) marking. The eighth measure has a piano (*p*) dynamic and a crescendo (*cresc.*) marking. The ninth measure has a piano (*p*) dynamic and a crescendo (*cresc.*) marking. The tenth measure has a piano (*p*) dynamic and a crescendo (*cresc.*) marking. The eleventh measure has a piano (*p*) dynamic and a crescendo (*cresc.*) marking. The twelfth measure has a piano (*p*) dynamic and a crescendo (*cresc.*) marking. The thirteenth measure has a piano (*p*) dynamic and a crescendo (*cresc.*) marking. The fourteenth measure has a piano (*p*) dynamic and a crescendo (*cresc.*) marking.

Elargissez un peu

Plus lent

Musical score for the second part of the Chant section, measures 15-20. The music is in G major and 3/4 time. It features a melodic line with various dynamics and articulations. The first measure has a forte (*f*) dynamic and a triplet of eighth notes. The second measure has a forte (*f*) dynamic and a triplet of eighth notes. The third measure has a forte (*f*) dynamic and a triplet of eighth notes. The fourth measure has a forte (*f*) dynamic and a triplet of eighth notes. The fifth measure has a forte (*f*) dynamic and a triplet of eighth notes. The sixth measure has a forte (*f*) dynamic and a triplet of eighth notes. The seventh measure has a forte (*f*) dynamic and a triplet of eighth notes. The eighth measure has a forte (*f*) dynamic and a triplet of eighth notes. The ninth measure has a forte (*f*) dynamic and a triplet of eighth notes. The tenth measure has a forte (*f*) dynamic and a triplet of eighth notes. The eleventh measure has a forte (*f*) dynamic and a triplet of eighth notes. The twelfth measure has a forte (*f*) dynamic and a triplet of eighth notes. The thirteenth measure has a forte (*f*) dynamic and a triplet of eighth notes. The fourteenth measure has a forte (*f*) dynamic and a triplet of eighth notes. The fifteenth measure has a forte (*f*) dynamic and a triplet of eighth notes. The sixteenth measure has a forte (*f*) dynamic and a triplet of eighth notes. The seventeenth measure has a forte (*f*) dynamic and a triplet of eighth notes. The eighteenth measure has a forte (*f*) dynamic and a triplet of eighth notes. The nineteenth measure has a forte (*f*) dynamic and a triplet of eighth notes. The twentieth measure has a forte (*f*) dynamic and a triplet of eighth notes.

III
Basse

Modéré

Musical score for the Basse section, measures 1-2. The music is in G major and 3/4 time. It features a bass line with various dynamics and articulations. The first measure has a mezzo-forte (*mf*) dynamic. The second measure has a mezzo-forte (*mf*) dynamic. The third measure has a mezzo-forte (*mf*) dynamic. The fourth measure has a mezzo-forte (*mf*) dynamic. The fifth measure has a mezzo-forte (*mf*) dynamic. The sixth measure has a mezzo-forte (*mf*) dynamic. The seventh measure has a mezzo-forte (*mf*) dynamic. The eighth measure has a mezzo-forte (*mf*) dynamic. The ninth measure has a mezzo-forte (*mf*) dynamic. The tenth measure has a mezzo-forte (*mf*) dynamic. The eleventh measure has a mezzo-forte (*mf*) dynamic. The twelfth measure has a mezzo-forte (*mf*) dynamic. The thirteenth measure has a mezzo-forte (*mf*) dynamic. The fourteenth measure has a mezzo-forte (*mf*) dynamic. The fifteenth measure has a mezzo-forte (*mf*) dynamic. The sixteenth measure has a mezzo-forte (*mf*) dynamic. The seventeenth measure has a mezzo-forte (*mf*) dynamic. The eighteenth measure has a mezzo-forte (*mf*) dynamic. The nineteenth measure has a mezzo-forte (*mf*) dynamic. The twentieth measure has a mezzo-forte (*mf*) dynamic.

cresc.

f

dim.

mf

Plus lent

p

IV
Chant

Lent

p *cresc.*

dim. *p*

Retenez Au mouvt

f *p*

cresc. *f*

dim.

p *f* *dim.*

V
Basse

Un poco maestoso

VI
Chant

Calme

poco cresc. 3 *mf*

Retenez Au mouvt

pp

f *pp sub.* 3

cresc. *mf* *p*

f

dim. 3 *pp*

VII
Basse

Modéré

p 3

cresc. 3 *f*

3

dim. 1 1

Retenez un peu

Au mouvt

Un peu plus lent

**VIII
Chant**

Calme, sans lenteur

Retenez Au mouvt

mf *dim.*

En retenant

p

IX
Basse

Large

f

p *cresc.*

f

dim. *p*

cresc. *dim.* *p*

f

p *cresc.* *f*

p *cresc.*

f *ff*

X Chant

Calme, sans lenteur

Pressez un peu

Au mouvt

XI

Basse

Modéré



XII Chant

Lent



Animez un peu



Retenez

1er mouv^t (lent)



Retenez

