

Flûte II

Sonate en trio N° 1

pour trois flûtes traversières sans basse

Op. VII - Paris, 1725

Joseph Bodin de Boismortier
(1689-1755)

Gravement

Musical score for Flute II, measures 1 through 11. The score is written in treble clef with a key signature of two sharps (F# and C#) and a common time signature (C). The tempo marking is "Gravement". The notation includes various rhythmic values, slurs, and trills (tr). Measure numbers 3, 5, 7, 9, and 11 are indicated at the beginning of their respective lines.

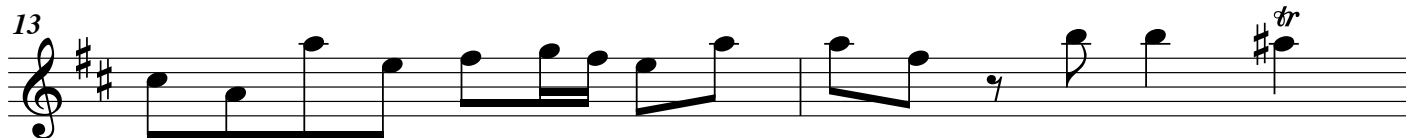
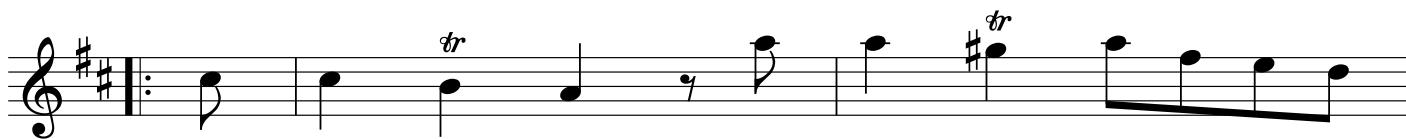
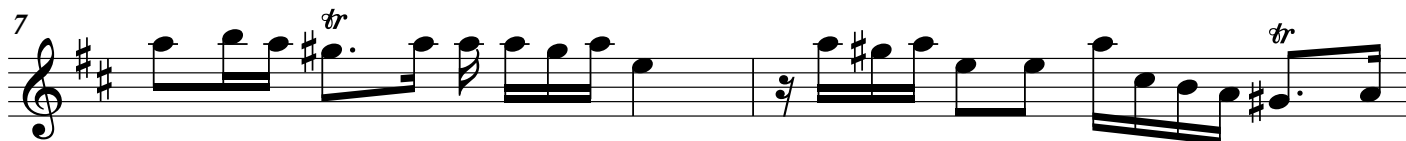
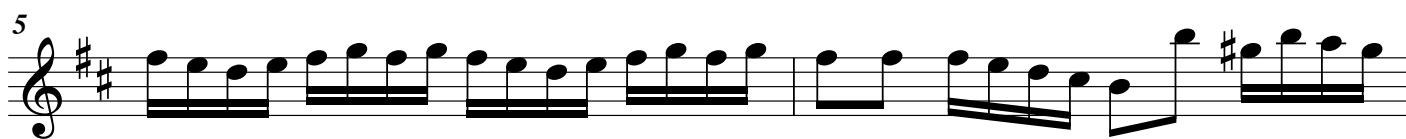
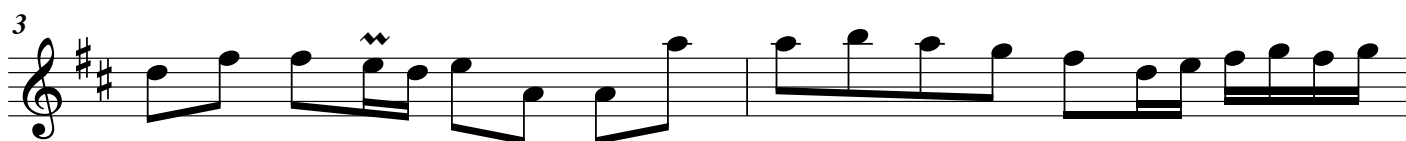
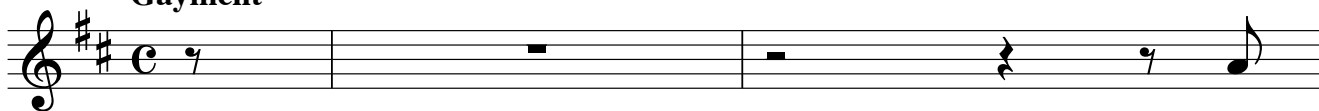
Flûte II

Joseph Bodin de Boismortier,
Sonate en trio pour trois flûtes traversières - Op. VII no 1

2

Allemande

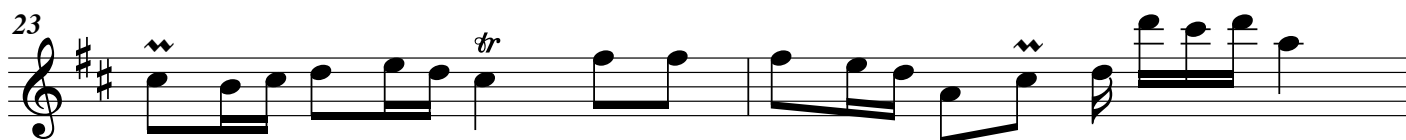
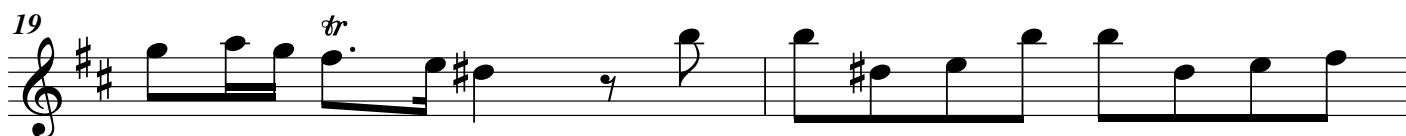
Gayment



Flûte II

Joseph Bodin de Boismortier,
Sonate en trio pour trois flûtes traversières - Op. VII no 1

3



Flûte II

Joseph Bodin de Boismortier,
Sonate en trio pour trois flûtes traversières - Op. VII no 1

4

Lentement

Musical score for Flute II, measures 1 through 14. The score is written in treble clef, key signature of two sharps (D major), and 3/4 time signature. The tempo is marked "Lentement".

Measures 1-3: The first line of music. Measure 1 contains a quarter note D4, an eighth note E4, and a quarter note F#4. Measure 2 contains a quarter note G4, an eighth note A4, and a quarter note B4. Measure 3 contains a quarter note C5, an eighth note B4, and a quarter note A4. Trills (tr) are indicated above the notes in measures 2 and 3.

Measures 4-5: The second line of music. Measure 4 contains a quarter note G4, an eighth note F#4, and a quarter note E4. Measure 5 contains a quarter note D4, an eighth note C4, and a quarter note B3.

Measures 6-8: The third line of music. Measure 6 contains a quarter note A3, an eighth note G3, and a quarter note F#3. Measure 7 contains a quarter note E3, an eighth note D3, and a quarter note C3. Measure 8 contains a quarter note B2, an eighth note A2, and a quarter note G2. The line ends with a double bar line and repeat dots.

Measures 9-10: The fourth line of music. Measure 9 contains a quarter note F#3, an eighth note E3, and a quarter note D3. Measure 10 contains a quarter note C3, an eighth note B2, and a quarter note A2.

Measures 11-13: The fifth line of music. Measure 11 contains a quarter note G2, an eighth note F#2, and a quarter note E2. Measure 12 contains a quarter note D2, an eighth note C2, and a quarter note B1. Measure 13 contains a quarter note A1, an eighth note G1, and a quarter note F#1. Trills (tr) are indicated above the notes in measures 11 and 13.

Measures 14: The sixth line of music. Measure 14 contains a quarter note E2, an eighth note D2, and a quarter note C2. A slur covers measures 14 and 15, with a trill (tr) indicated above the notes in measure 15. The line ends with a double bar line and repeat dots.

Flûte II

Joseph Bodin de Boismortier,
Sonate en trio pour trois flûtes traversières - Op. VII no 1

5

Gavotte en Rondeau

Musical score for Flute II, Gavotte en Rondeau, measures 1-20. The score is written in treble clef, key of D major (two sharps), and common time (C). The piece consists of seven staves of music. Measure 1 starts with a whole rest. Measures 2-4 contain a melodic line with slurs and a trill in measure 3. Measure 5 has a trill and a whole rest. Measure 6 has a trill and a whole note. Measure 7 has a trill and a whole note, ending with a double bar line and repeat dots, labeled "Fin". Measure 10 is the start of the first couplet, marked "(1^{er} Couplet)". Measures 11-13 continue the melodic line with a trill in measure 13. Measure 16 is the start of the Rondeau section, marked "(Rondeau)", and includes a trill. Measures 17-20 continue the melodic line with trills in measures 18 and 19.

Flûte II

Joseph Bodin de Boismortier,
Sonate en trio pour trois flûtes traversières - Op. VII no 1

23

26 (2^e Couplet)

29

32 D. C. à Fin

Gayment

7

14

Flûte II

Joseph Bodin de Boismortier,
Sonate en trio pour trois flûtes traversières - Op. VII no 1

