

Universitätsbibliothek  
Hochsch. Bibliothek  
Nr. / Kf  
Tab. 27



"Et Saterbesög"

componeret

af

Ole Bull.

Fr. W. J. J. W. J. J.

*Allegretto.*

Handwritten musical score for the first system. It consists of three staves. The top staff is for Clarinet, marked *Clar.*. The middle staff is for Bassoon, marked *Bassoi.*. The bottom staff is for Timpani, marked *Timpani*. The music is in 6/8 time and begins with a *ppp.* dynamic marking. The Clarinet and Bassoon parts feature melodic lines with eighth and sixteenth notes, while the Timpani part provides a rhythmic accompaniment with chords.

Handwritten musical score for the second system. It consists of two staves. The top staff is for Clarinet, marked *Clar.*. The bottom staff is for Bassoon. The music continues from the first system, with the Clarinet part showing more complex rhythmic patterns and the Bassoon part providing harmonic support.

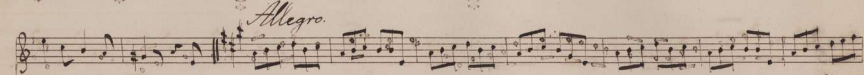
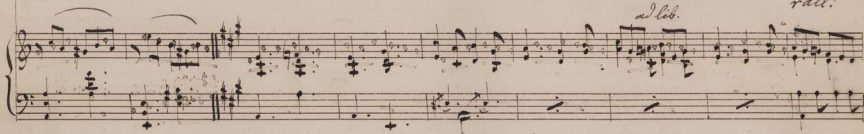
Handwritten musical score for the third system. It consists of two staves. The top staff is for Clarinet, marked *Clar.*. The bottom staff is for Bassoon. The music concludes with a *ppp.* dynamic marking. The Clarinet part features a melodic line with slurs and ties, while the Bassoon part provides a steady accompaniment.

The first system consists of three staves. The top staff is a treble clef staff containing a melodic line with eighth and sixteenth notes, some beamed together. The bottom two staves form a grand staff (treble and bass clefs) with piano accompaniment, primarily consisting of chords and some moving lines.

The second system continues the composition with similar notation. The treble clef staff features a melodic line with some accents (marked 'acc') and a double bar line. The grand staff below provides harmonic support with chords and occasional melodic fragments.

The third system concludes the piece. The treble clef staff features a large, dense, and somewhat chaotic musical flourish that spans across the staff. The grand staff below has a few notes and rests. The system ends with a double bar line and a final chord in the grand staff.

V.S.

*Andantino.**Violini.**Allegro.**ad lib.**rall.**a tempo.**Andante*

This page contains a handwritten musical score consisting of six systems of staves. The first system has a single treble clef staff. The second system consists of a grand staff with treble and bass clefs. The third system has a single treble clef staff with the tempo marking *Alliegretto.* and the instruction *col. 8va* written below it. The fourth system is a grand staff with treble and bass clefs. The fifth system has a single treble clef staff with the instruction *8va* written below it. The sixth system is a grand staff with treble and bass clefs. The notation includes various note values, rests, and dynamic markings.

Handwritten musical score system 1. It consists of two staves: a treble clef staff on top and a bass clef staff on the bottom. The treble staff contains a melodic line with various note values and rests. The bass staff contains a more complex accompaniment with many beamed notes. The word "Adagio." is written in cursive in the right margin of the system.

Handwritten musical score system 2. It consists of two staves: a treble clef staff on top and a bass clef staff on the bottom. The treble staff features a melodic line with some slurs and dynamic markings. The bass staff continues the accompaniment with dense rhythmic patterns.

Handwritten musical score system 3. It consists of two staves: a treble clef staff on top and a bass clef staff on the bottom. The treble staff has a melodic line with some slurs. The bass staff has a more rhythmic accompaniment. The word "pizz." is written in cursive in the right margin of the system.

Handwritten musical score system 1, consisting of a single treble clef staff and a grand staff (treble and bass clefs). The music features a complex rhythmic pattern with many sixteenth and thirty-second notes, and includes several slurs and dynamic markings.

Handwritten musical score system 2, consisting of a single treble clef staff and a grand staff. The system includes the instruction *arco.* in the bass staff and *Foro.* in the treble staff. The music continues with intricate rhythmic patterns and slurs.

Handwritten musical score system 3, consisting of a single treble clef staff and a grand staff. The system includes the instruction *Clar.* in the bass staff. The music concludes with a final cadence and a double bar line.

Adagio.

pp

Ma Solen jeg ser det loden alle paa snart det med Hovene  
 Haar mig gaar i idelige Spid og kun hører Bjeldene

Tremolo.

og der er den som du kunde fik ønske sig Hver blandt Folk var paa det skide den naar I løber det  
 Hinge Haar paa tømmer Stok med Sjog og Spid paa Løden hvor Klokken er svage i Kommenet Old

gerdelt anden staa der midt over Skindet Kommen da ved jeg det Hekkeser i gaar da  
 i susende Svare som eller paa Sjoklak og alle Hjerter



*ingen för Själfvet ditt ängene de vet sig icke till. Håll mig god; lå ringen för Själfvet ditt  
 hållas det för mig i Skyggen från Högskolans Kåle, här det ymnigt af sig bender ut. hurne i*

*ingen*  
*Skygg.*

*4 corde*

*Halling. Moderato.*

This image shows a page of handwritten musical notation, numbered 16 in the top left corner. The page contains three systems of music, each consisting of a vocal line and a piano accompaniment. The vocal lines are written in a single staff with a treble clef and a key signature of two sharps (F# and C#). The piano accompaniment is written in two staves, with the right hand in the upper staff and the left hand in the lower staff, both using treble clefs. The notation includes various note values, rests, and dynamic markings such as *pp* (pianissimo) and *ppp* (pianissimissimo). The paper shows signs of age, including some staining and fading.

A single musical staff containing a sequence of notes and rests, including some beamed eighth notes.

Two staves for piano accompaniment. The upper staff contains chords and some melodic fragments, while the lower staff contains a bass line with notes and rests.

A musical staff featuring a double bar line. To the right of the bar line, there is a marking that reads "4 corde" above a series of notes.

Two staves for piano accompaniment, continuing the musical piece with chords and a bass line.

A single empty musical staff with a treble clef and a key signature of two sharps.

A single empty musical staff with a treble clef and a key signature of two sharps.

A single empty musical staff with a treble clef and a key signature of two sharps.