

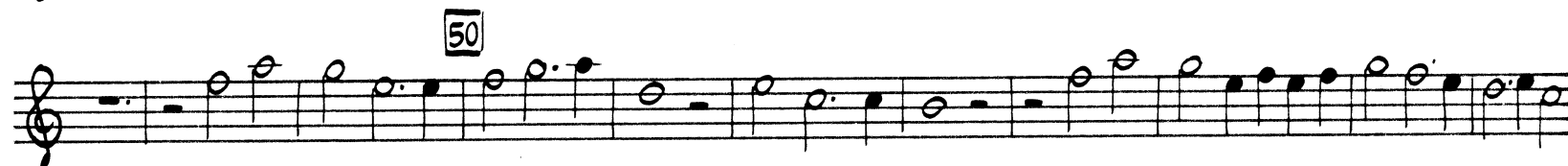
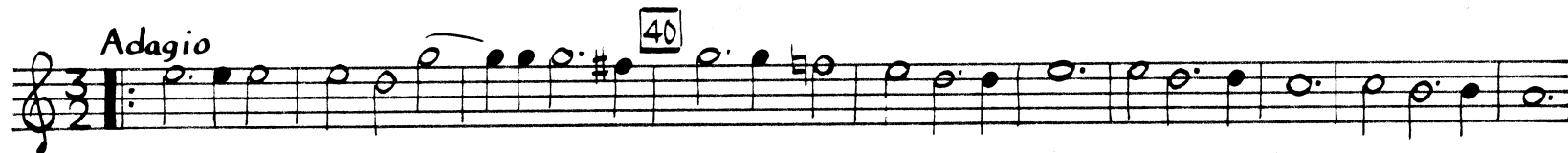
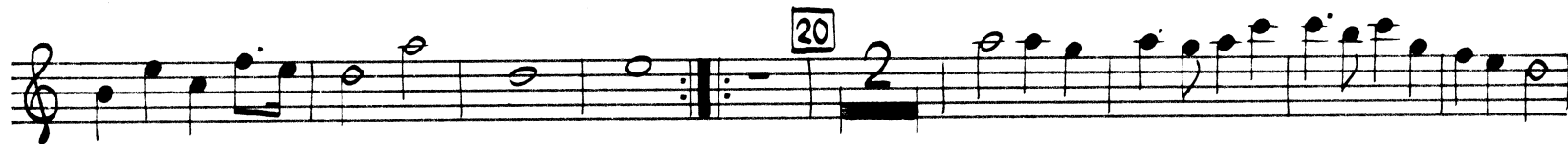
Trumpet I in C

Twelve Sonatas

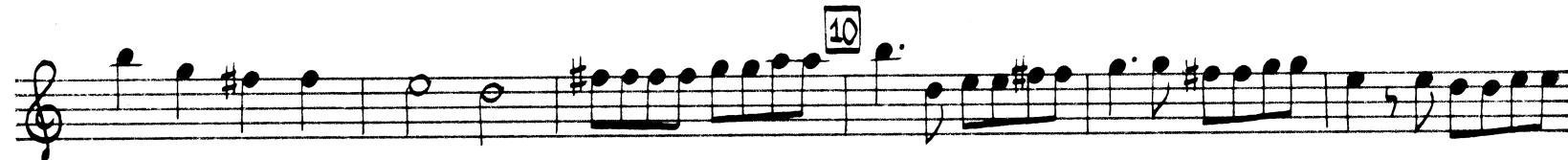
Johann Pezel

from
"Hora decima"
Leipzig, 1670

I. Sonata (No. 1) Adagio



II. Sonata (No. 2) Adagio



Source: Benkaeler Deutscher
Tonkunst, Vol. 63

Musical staff with treble clef, key signature of one sharp (F#), and a box containing the number 30.

Musical staff with treble clef, key signature of one sharp (F#), and a double bar line.

Adagio

Musical staff with treble clef, 3/2 time signature, key signature of one sharp (F#), and a box containing the number 40.

Musical staff with treble clef, key signature of one sharp (F#), and a box containing the number 50.

Musical staff with treble clef, key signature of one sharp (F#), and a double bar line.

Musical staff with treble clef, key signature of one sharp (F#), and a box containing the number 60.

III. Sonata (No. 3) Adagio

Musical staff with treble clef, key signature of one flat (Bb), and a double bar line.

Musical staff with treble clef, key signature of one flat (Bb), and a box containing the number 10.

Musical staff with treble clef, key signature of one flat (Bb).

Musical staff with treble clef, key signature of one flat (Bb), and a box containing the number 20.

Musical staff with treble clef, key signature of one flat (Bb).

Musical staff with treble clef, key signature of one flat (Bb), and a box containing the number 30.

IV. Sonata (No. 4) Adagio

Musical score for Sonata (No. 4) Adagio, Tpt. I. The score consists of six staves of music in G major, 3/4 time. It features a melodic line with various rhythmic patterns and dynamics. Measure numbers 2, 10, 20, and 30 are indicated in boxes. The piece concludes with a double bar line and repeat signs.

V. Sonata (No. 5) Adagio

Musical score for Sonata (No. 5) Adagio, Tpt. I. The score consists of five staves of music in G major, 3/2 time. It features a melodic line with various rhythmic patterns and dynamics. Measure numbers 10, 20, 30, and 40 are indicated in boxes. The piece concludes with a double bar line and repeat signs.

Musical score for Tpt. I, measures 40-75. The score consists of five staves of music in a single system. The key signature is one flat (B-flat). The notation includes various note values, rests, and articulation marks. Measure numbers 50, 60, and 70 are indicated in boxes above the staves. There are also some measure rests indicated by thick black bars.

VI. Sonata (No. 6) Adagio

Musical score for Sonata (No. 6) Adagio, measures 1-35. The score consists of seven staves of music in a single system. The key signature is one sharp (F#) and the time signature is common time (C). The notation includes various note values, rests, and articulation marks. Measure numbers 10, 20, and 30 are indicated in boxes above the staves. The word "Adagio" is written above the fourth staff. The score ends with a double bar line and a fermata.

VII. Sonata (No. 12) Adagio

Musical score for Sonata (No. 12) Adagio, Tpt. I. The score consists of six staves of music in treble clef with a common time signature. The music features a melodic line with various intervals and rests. Measure numbers 10, 20, and 30 are indicated in boxes above the staves. The tempo 'Adagio' is written above the first staff.

VIII. Sonata (No. 13) Adagio

Musical score for Sonata (No. 13) Adagio, Tpt. I. The score consists of six staves of music in treble clef with a 3/2 time signature. The music features a melodic line with various intervals and rests. Measure numbers 10, 20, 30, and 40 are indicated in boxes above the staves. The tempo 'Adagio' is written above the first staff.

Musical score for Tpt. I, measures 45-75. The score consists of six staves. Measure 45 is marked with a box containing the number 50. Measure 55 is marked with a box containing the number 60. Measure 65 is marked with a box containing the number 70. The tempo is marked *Adagio* above the fifth staff. The key signature has one sharp (F#).

IX. Sonata (No. 14)

Adagio

Musical score for Sonata (No. 14), measures 1-35. The score consists of six staves. Measure 10 is marked with a box containing the number 10. Measure 20 is marked with a box containing the number 20. Measure 30 is marked with a box containing the number 30. The tempo is marked *Adagio* above the second staff. The key signature has one sharp (F#).

X. Sonata (No. 27) Adagio

Musical score for Sonata (No. 27) Adagio, Tpt. I. The score consists of six staves of music in G major and 3/2 time. It includes measure markers at 10, 20, 30, 40, 50, 60, and 70. The tempo is marked 'Adagio'.

XI. Sonata (No. 30)

Musical score for Sonata (No. 30), Tpt. I. The score consists of five staves of music in G major and 3/4 time. It includes measure markers at 10, 20, and 30. The tempo is marked 'Adagio'.

XII. Sonata (No.39) Adagio

Musical score for Tpt. I, Sonata (No.39) Adagio, page 8. The score consists of 12 staves of music in treble clef with a 3/2 time signature. Measure numbers 10, 20, 30, 40, 50, 60, and 70 are marked in boxes. A double bar line with a repeat sign is present at the beginning of the 30th measure.