

3 Sinfonie da "Il Barcheggio"

Basso e Trombone

A. Stradella (1639 - 1682)

[I] Sinfonia avanti il Barcheggio

[I.1] Spiritosa, e staccata

Musical score for Bass and Trombone, first movement of the first symphony. The score is written in bass clef with a key signature of two sharps (F# and C#) and a common time signature (C). The music is in a 3/4 time signature. The score consists of nine staves of music, with measure numbers 5, 8, 11, 14, 18, 21, and 24 indicated at the beginning of each staff. The music is characterized by a rhythmic pattern of eighth and sixteenth notes, with some rests and accidentals. The final measure of the first movement is marked with a fermata and a double bar line.

segue la Tripla [ms TO]

[I.2 Tripla]

Musical score for Bass and Trombone, second movement of the first symphony. The score is written in bass clef with a key signature of two sharps (F# and C#) and a 3/2 time signature. The music is in a 3/2 time signature. The score consists of three staves of music, with measure numbers 6 and 11 indicated at the beginning of each staff. The music is characterized by a rhythmic pattern of quarter and eighth notes, with some rests and accidentals. The final measure of the second movement is marked with a fermata and a double bar line.

16 # 7 6 6 5 8 9 # 8 # 5 8

20 4 7 6 #

25

30

[I.3 Canzone]

5

9

13

18

23

26

30

34

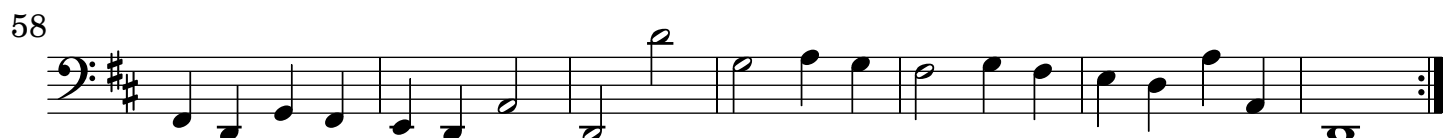
37

[I.4 Allegro]

Musical score for Bassoon and Trombone, I.4 Allegro, measures 1-65. The score is written in bass clef with a key signature of two sharps (F# and C#) and a 3/8 time signature. The music consists of 65 measures, with measure numbers 7, 15, 20, 25, 31, 36, 41, 46, 51, 56, 61, and 65 indicated at the start of their respective staves. The notation includes various rhythmic values such as quarter notes, eighth notes, and sixteenth notes, along with rests and dynamic markings like accents and slurs. The piece concludes with a double bar line at measure 65.

[II] Seconda parte Sinfonia avanti

[II.1 Allegro, e staccato]



[II.4] Canzone

2

7

12

17

22

26

[II.5 Allegro]

7

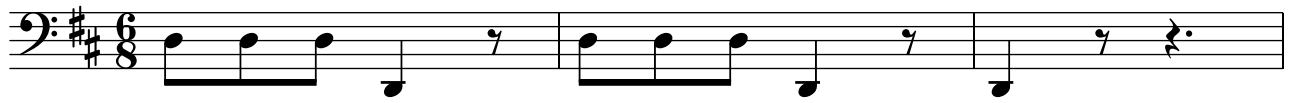
13

20

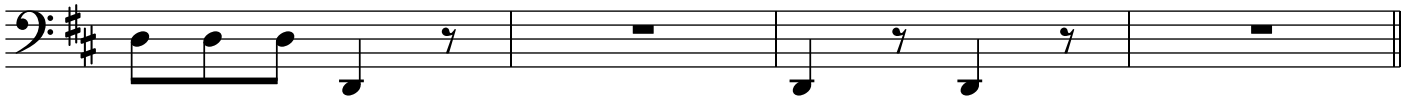
27

[III] Sinfonia con V.V. all'Unisono, e Cornetto, e Trombone

[III.1] Adagio, forte, e staccato



4



8

[III.2] Allegro



11



18



23



30



36



40



45



50

