

SECOND LIVRE  
*DE*  
SONATES

POUR LE VIOLON ET POUR LA FLUTE  
TRAVERSIERE AVEC LA BASSE CONTINUE.

*Composées*

PAR M.<sup>R</sup> LECLAIR L'AINÉ.

*Dédiées*

A MONSIEUR BONNIER

DE LA MOSSON,

Marechal general des logis des Camps & Armées du Roi,  
Tresorier general des Etat de la Province du Languedoc.

*Gravées Par M.<sup>lle</sup> Louise Roussel.*

*Le prix est de 15<sup>ll</sup> en blanc.*

SEVENAUX PARIS,

L'AUTEUR, rue S. Benoist du côté de l'Abais, Fautbourg S. Germain.  
Chez Le S. BOIVIN Marchand Rue S. Honoré à la Règle Dor.  
Le S. LECLERC Marchand Rue du Roule à la Croix Dor.

*Avec Privilège du Roi.*

# Jean Marie Leclair

(1697-1764)

## Sonatas for Violin Opus 2

### Volume 2 (5 - 8)

#### Sonata No 5 in G Major

Andante



P 2 Violin  
P 1 Cembalo  
P 2 Cello

#### Sonata No 6 in D Major

Adagio

Allegro ma poco



P 6 Violin  
P 16 Cembalo  
P 6 Cello

#### Sonata No 7 in Bb Major

Largo



P 13 Violin  
P 31 Cembalo  
P 11 Cello

#### Sonata No 8 in D Major

Adagio

Violon ou flûte

Violo



P 18 Violin  
P 47 Cembalo  
P 16 Cello  
P 2 Cello Obbligato

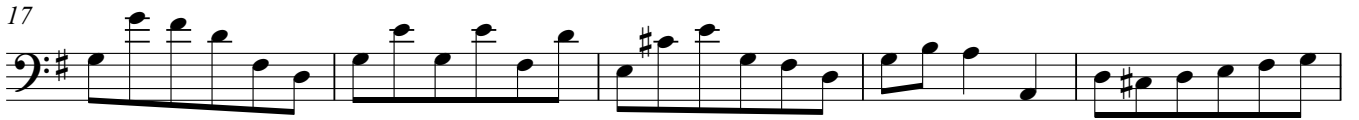
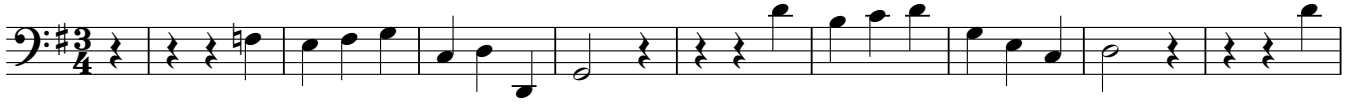


# Sonata V

*Cette Sonate peüt ce joüer sur la flûte Allemande*

Jean Marie Leclair

Andante



Allegro ma poco

*sempre* 3



4



7



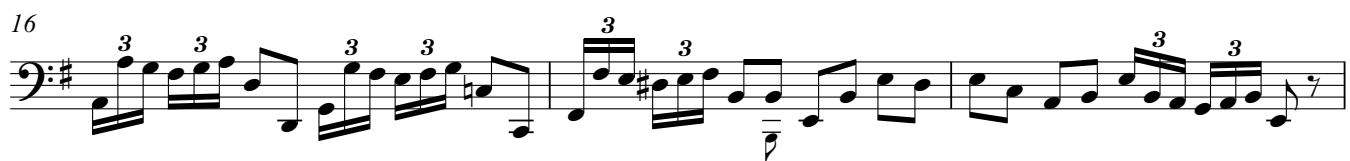
10



13



16



19



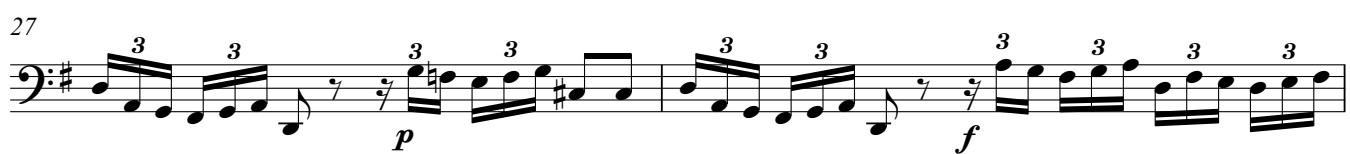
22



24



27



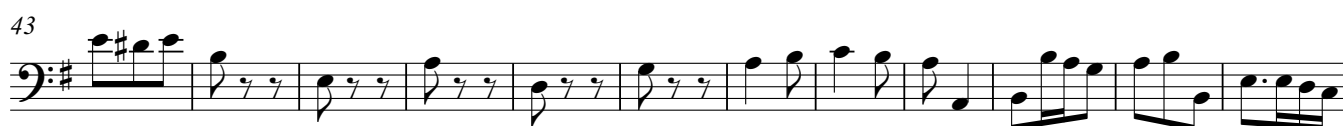
29



Gavotta  
Gratioso



## Allegro assai



# Sonata VI

Adagio

Allegro ma poco

Measures 1-7: Bass clef, key signature of two sharps (F# and C#), common time signature. Measures 1-4 are marked 'Adagio' and feature a slow, flowing melody with long notes and ties. Measures 5-7 are marked 'Allegro ma poco' and feature a more rhythmic, eighth-note pattern. A double bar line with repeat dots is at the end of measure 7.

Measures 8-15: Bass clef, key signature of two sharps. Measures 8-10 continue the 'Allegro ma poco' tempo with eighth-note patterns. Measures 11-15 show a change in texture with some longer notes and rests.

Measures 16-23: Bass clef, key signature of two sharps. Measure 16 is marked 'Piano' and features a half note. Measures 17-23 continue with eighth-note patterns and some rests. Measure 22 is marked 'Forte'.

Measures 24-31: Bass clef, key signature of two sharps. Measures 24-31 feature a consistent eighth-note rhythmic pattern with some chromatic movement.

Measures 32-36: Bass clef, key signature of two sharps. Measures 32-36 continue with eighth-note patterns and some chromatic movement.

Measures 37-42: Bass clef, key signature of two sharps. Measures 37-42 continue with eighth-note patterns and some chromatic movement.

Measures 43-50: Bass clef, key signature of two sharps. Measure 43 is marked with a repeat sign. Measures 43-50 continue with eighth-note patterns and some chromatic movement.

Measures 51-59: Bass clef, key signature of two sharps. Measures 51-59 continue with eighth-note patterns and some chromatic movement.

Measures 60-68: Bass clef, key signature of two sharps. Measures 60-68 continue with eighth-note patterns and some chromatic movement.

Measures 69-76: Bass clef, key signature of two sharps. Measures 69-76 continue with eighth-note patterns and some chromatic movement.



79

88

96

103

109

**Largo**

9

18

27

33

## Allegro ma non troppo



7



12



18



24



29



35



41



47



53



59



64



70





# Sonata VII

Largo

Measures 1-3 of the bass line. The key signature has one flat (B-flat) and the time signature is 12/8. The melody consists of eighth and quarter notes.

4

Measures 4-6. Measure 5 is marked *Piano* and measure 6 is marked *Forte*. The notation includes slurs and dynamic markings.

8

Measures 7-9. Measure 9 contains a first ending bracket labeled "1." leading to a double bar line.

10

Measures 10-13. Measure 10 contains a second ending bracket labeled "2." leading to a double bar line. The notation includes slurs and dynamic markings.

14

Measures 14-16. The notation includes slurs and dynamic markings.

17

Measures 17-20. The notation includes slurs and dynamic markings.

21

Measures 21-23. Measure 21 features a fermata over a note. The notation includes slurs and dynamic markings.

24

Measures 24-26. The notation includes slurs and dynamic markings, ending with a double bar line.

## Allegro ma poco



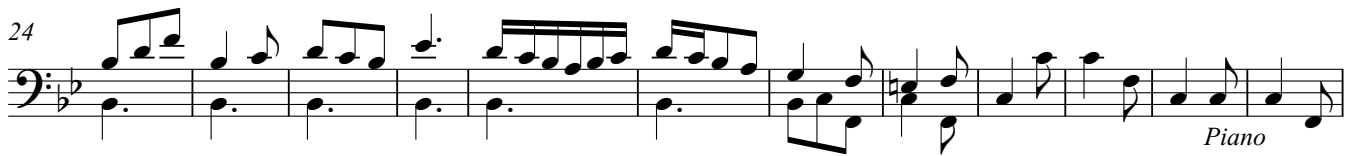
Aria  
Allegro ma non troppo



Musical staff 1, measures 1-11. The staff is in bass clef with a 3/8 time signature and a key signature of one flat. The music begins with a rhythmic pattern of eighth notes. The word *Fierement.* is written above the staff at the end of the line.



Musical staff 2, measures 12-23. The staff continues the bass line with eighth notes and rests. A repeat sign is present at the end of the line.



Musical staff 3, measures 24-35. The staff continues the bass line. The word *Piano* is written below the staff at the end of the line.



Musical staff 4, measures 36-45. The staff continues the bass line. The word *Fierement.* is written above the staff at the beginning of the line.



Musical staff 5, measures 46-57. The staff continues the bass line. The word *Fierement.* is written above the staff at the end of the line.



Musical staff 6, measures 58-69. The staff continues the bass line. The word *Tendrement.* is written above the staff at the beginning, and *Piano* and *Forte* are written below the staff.



Musical staff 7, measures 70-81. The staff continues the bass line with eighth notes and rests.



Musical staff 8, measures 82-91. The staff continues the bass line with eighth notes and rests.



Musical staff 9, measures 92-103. The staff continues the bass line. The word *Fierement.* is written above the staff at the end of the line.

**Giga**  
**Allegro**



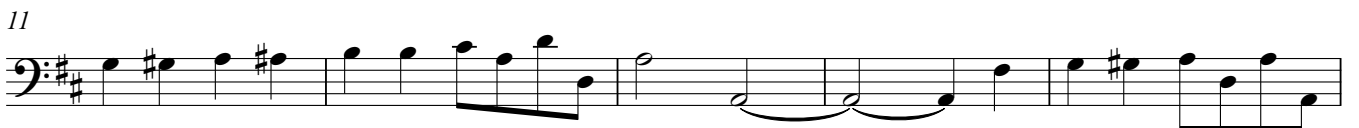


# Sonata VIII

Adagio



*Clavesin ou violinchel*



*Tasto solo*



*piano*

*forte*

*piano*

Allegro



30



35



39



43



48



52



**Sarabanda**  
**Largo**



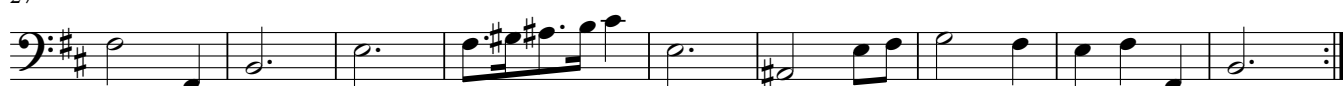
9



18



27



**Allegro assai**

11

*tasto solo*

17

*tasto solo*