

Francesco Bendusi

Opera nova de balli

à quattro

Edited by Allen Garvin

Bassus

Hawthorne Early Music

FB-1

20130704

©2013 — Allen Garvin  
Some rights reserved

Hawthorne Early Music Publications, Dallas, TX

This work is licensed under the Creative Commons Attribution-ShareAlike 3.0 US License. To view a copy of this license, visit <http://creativecommons.org/licenses/by-sa/3.0/us> or send a letter to Creative Commons, 444 Castro Street, Suite 900, Mountain View, California, 94041, USA.

The typeface used is Liberation Serif, licensed under the GNU General Public License. This document was typeset using XeLaTeX and Lilypond.

10 09 08 07 06 05 04 03 02 01      19 18 17 16 15 14 13

### Pass'e mezo ditto il romano

Musical score for 'Pass'e mezo ditto il romano' in bass clef, common time. The score consists of two staves. The first staff contains measures 1 through 5, with a '5' above the fifth measure. The second staff contains measures 6 through 15, with '10' above the tenth measure and '15' above the fifteenth measure. The piece concludes with a double bar line.

### Moschetta

Musical score for 'Moschetta' in bass clef, common time. The score consists of four staves. The first staff contains measures 1 through 5, with a '5' above the fifth measure. The second staff contains measures 6 through 10, with a '10' above the tenth measure. The third staff contains measures 11 through 15, with a '15' above the fifteenth measure and a flat symbol (b) above the first and eighth measures. The fourth staff contains measures 16 through 20, with a '20' above the twentieth measure, a '6' above the sixteenth measure, and a '2' below the sixteenth measure. The piece concludes with a double bar line.

### Desiderata

Musical score for 'Desiderata' in bass clef, common time. The score consists of three staves. The first staff contains measures 1 through 5, with a '5' above the fifth measure. The second staff contains measures 6 through 10, with a '10' above the tenth measure. The third staff contains measures 11 through 15, with a '15' above the fifteenth measure, a '6' above the sixteenth measure, and a '2' below the sixteenth measure. The piece concludes with a double bar line.

## Pietoso

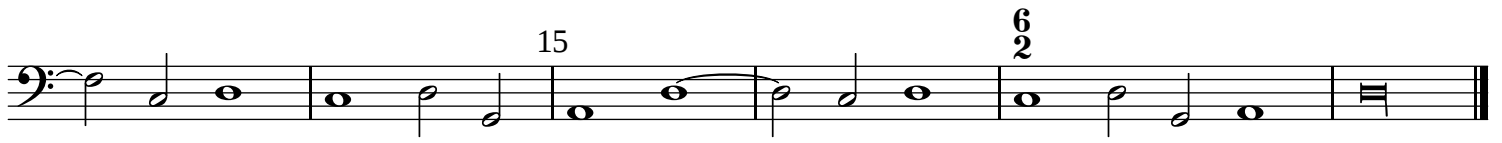
Musical score for 'Pietoso' in bass clef, common time. The score consists of three staves. The first staff begins with a treble clef and a bass clef, followed by a series of notes. A measure number '5' is placed above the fifth measure. The second staff continues the melody with a measure number '10' above the tenth measure. The third staff concludes the piece with a measure number '15' above the fifteenth measure and a final cadence marked with a double bar line. A '6/2' time signature is written above the final measure.

## Speranza

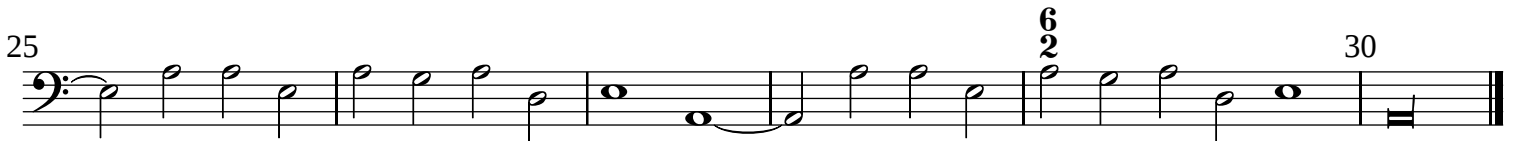
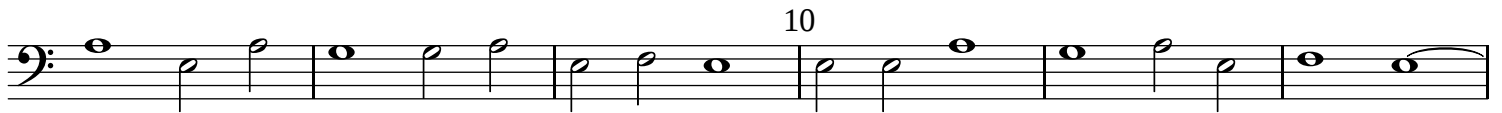
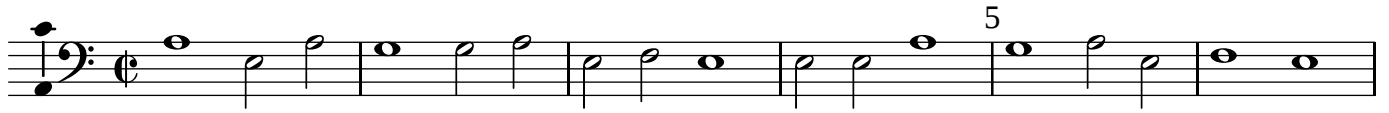
Musical score for 'Speranza' in bass clef, common time. The score consists of four staves. The first staff begins with a treble clef and a bass clef, followed by a series of notes. A measure number '5' is placed above the fifth measure. The second staff continues the melody with a measure number '10' above the tenth measure. The third staff continues with a measure number '15' above the fifteenth measure. The fourth staff concludes the piece with a measure number '20' above the twentieth measure and a final cadence marked with a double bar line. A '6/2' time signature is written above the final measure.

## La mala vecchie

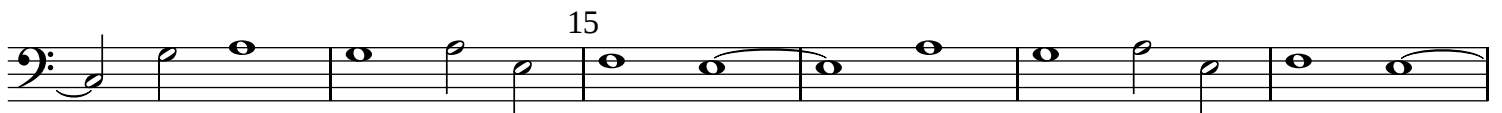
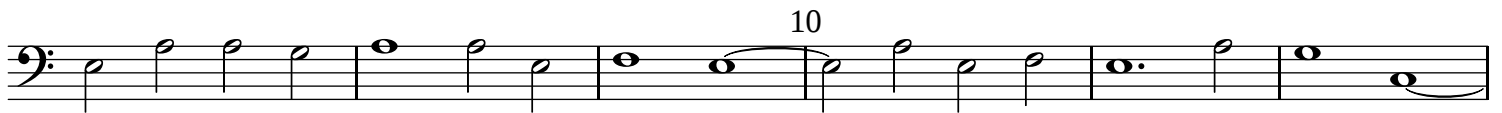
Musical score for 'La mala vecchie' in bass clef, common time. The score consists of two staves. The first staff begins with a treble clef and a bass clef, followed by a series of notes. A measure number '5' is placed above the fifth measure. The second staff continues the melody with a measure number '10' above the tenth measure.



## Il stocco



## Doi stanchi



## La falilela

Musical score for 'La falilela' in bass clef, 4/4 time. The score consists of three staves. The first staff contains measures 1 through 5, with a '5' above the fifth measure. The second staff contains measures 6 through 10, with a '10' above the tenth measure. The third staff contains measures 11 through 15, with a '15' above the thirteenth measure, a '6/2' time signature change above the fourteenth measure, and a flat symbol below the thirteenth measure. The piece ends with a double bar line.

## La bruna

Musical score for 'La bruna' in bass clef, 4/4 time. The score consists of two staves. The first staff contains measures 1 through 5, with a '5' above the fifth measure. The second staff contains measures 6 through 15, with a '10' above the tenth measure, a '6/2' time signature change above the thirteenth measure, and a '15' above the fifteenth measure. The piece ends with a double bar line.

## E dove vastu o bon solda

Musical score for 'E dove vastu o bon solda' in bass clef, 4/4 time. The score consists of three staves. The first staff contains measures 1 through 5, with a '5' above the fifth measure. The second staff contains measures 6 through 10, with a '10' above the tenth measure. The third staff contains measures 11 through 15, with a '15' above the thirteenth measure, a '6/2' time signature change above the fourteenth measure, and a double bar line at the end.

## Chi non ha martello

Musical score for 'Chi non ha martello' in bass clef, 4/4 time. The score consists of one staff containing measures 1 through 5, with a '5' above the fifth measure. The piece ends with a double bar line.

10

15

20

$\frac{6}{2}$

### Incognito

5

10

15

20

25

### Bella foresta

5

10

15

20

$\frac{6}{2}$

## Galante



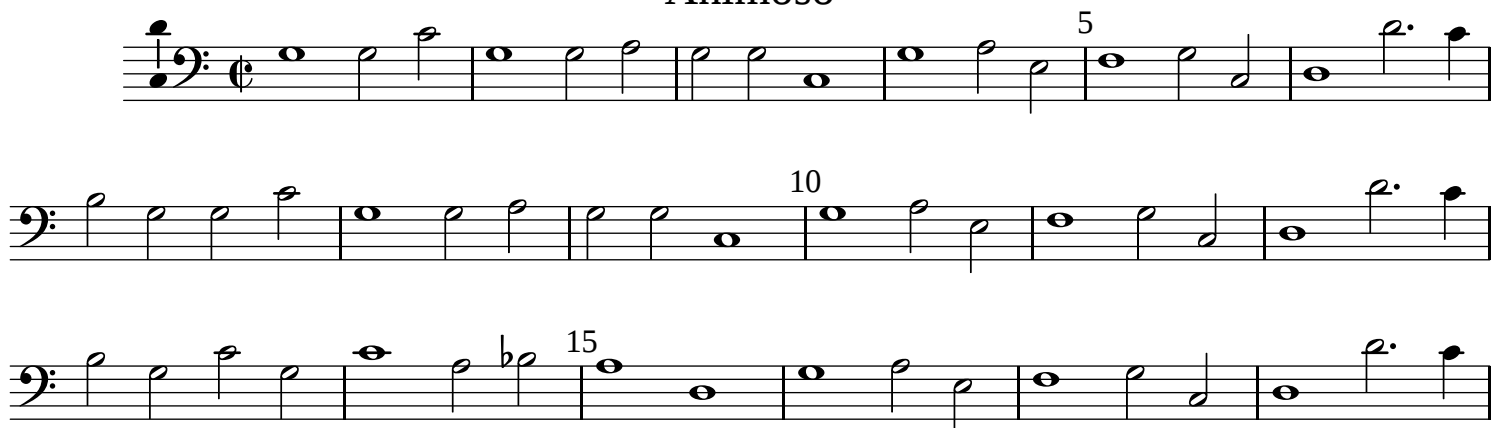
Musical score for Galante, bass clef, common time. The score consists of three staves. The first staff contains measures 1-5, with a fermata over the fifth measure. The second staff contains measures 6-10, with a fermata over the tenth measure. The third staff contains measures 11-15, with a fermata over the fifteenth measure. A 6/2 time signature change is indicated above the final measure of the third staff.

## Fusta



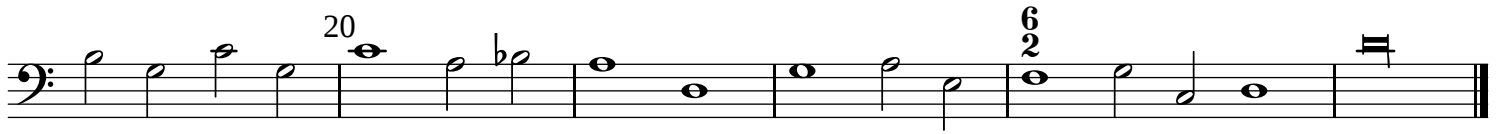
Musical score for Fusta, bass clef, common time. The score consists of three staves. The first staff contains measures 1-5, with a fermata over the fifth measure. The second staff contains measures 6-10, with a fermata over the tenth measure. The third staff contains measures 11-15, with a fermata over the fifteenth measure. A 6/2 time signature change is indicated above the final measure of the third staff.

## Animoso

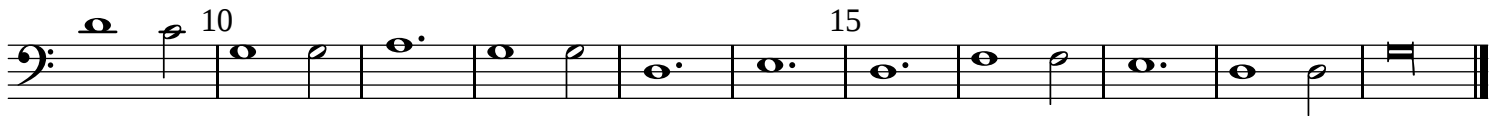


Musical score for Animoso, bass clef, common time. The score consists of three staves. The first staff contains measures 1-5, with a fermata over the fifth measure. The second staff contains measures 6-10, with a fermata over the tenth measure. The third staff contains measures 11-15, with a fermata over the fifteenth measure. A flat (b) is placed below the note in the second measure of the third staff.

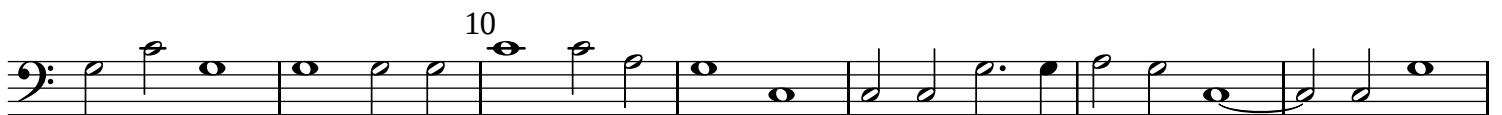




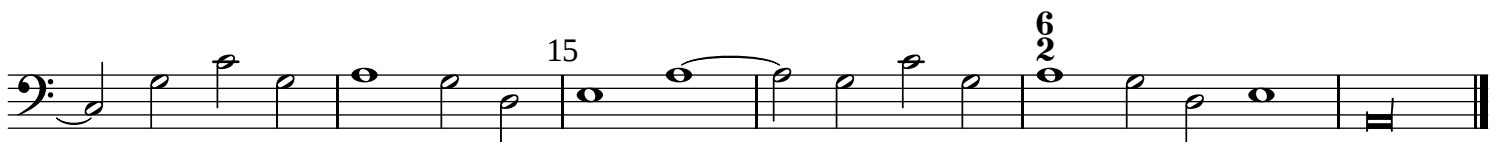
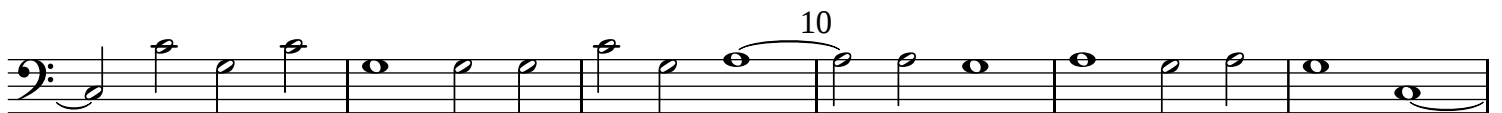
## Cortesa padoana



## Bandera



## Gioia



## La giovenetta

Musical score for 'La giovenetta' in bass clef, 2/4 time. The score consists of three staves. The first staff starts with a treble clef and a key signature of one flat (B-flat), then changes to a bass clef. It contains measures 1 through 14, with a measure rest of 5 measures indicated above the staff. The second staff contains measures 15 through 19, with a measure rest of 10 measures indicated above the staff. The third staff contains measures 20 through 24, with a measure rest of 6 measures indicated above the staff. The piece ends with a double bar line.

## Il ben ti vegna

Musical score for 'Il ben ti vegna' in bass clef, 2/4 time. The score consists of five staves. The first staff starts with a treble clef and a key signature of one flat (B-flat), then changes to a bass clef. It contains measures 1 through 9, with a measure rest of 5 measures indicated above the staff. The second staff contains measures 10 through 14, with a measure rest of 10 measures indicated above the staff. The third staff contains measures 15 through 19, with a measure rest of 15 measures indicated above the staff. The fourth staff contains measures 20 through 24, with a measure rest of 20 measures indicated above the staff. The fifth staff contains measures 25 through 29, with a measure rest of 25 measures indicated above the staff. The piece ends with a double bar line.

## Pass'e mezo ditto il compasso

Musical score for 'Pass'e mezo ditto il compasso' in bass clef, 2/4 time. The score consists of three staves. The first staff starts with a treble clef and a key signature of one flat (B-flat), then changes to a bass clef. It contains measures 1 through 4, with a measure rest of 5 measures indicated above the staff. The second staff contains measures 5 through 9, with a measure rest of 10 measures indicated above the staff. The third staff contains measures 10 through 14, with a measure rest of 15 measures indicated above the staff. The piece ends with a double bar line.

# Violla

Musical score for Viola, Opera nova de balli (bassus). The score consists of two staves of music in bass clef. The first staff contains measures 1 through 5, with a finger number '5' above the fifth measure. The second staff contains measures 6 through 10, with a finger number '10' above the eighth measure and a '6/2' time signature above the ninth measure. The piece concludes with a double bar line at the end of the second staff.