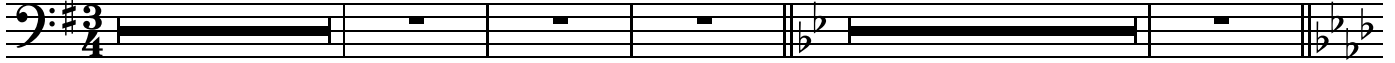


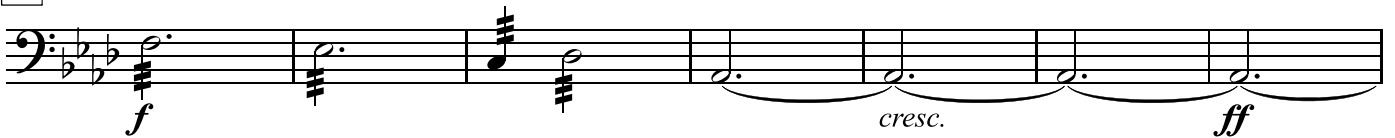
Deborah

Daniel Léo Simpson
December 12, 1972
Tucson, Arizona USA

Moderato $\text{♩} = 112$ **3** rit. . . a tempo rit. . . . a tempo **7**



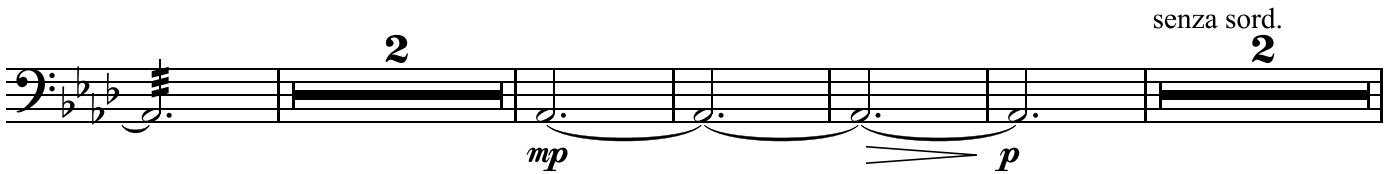
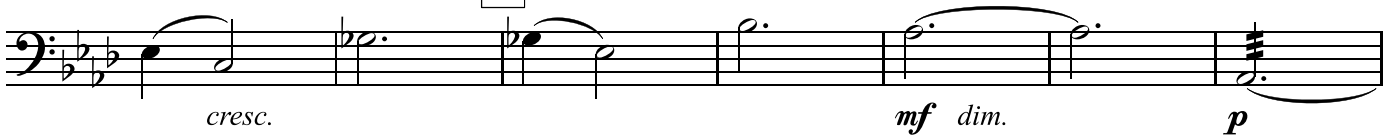
15



meno mosso $\text{♩} = 112$



35



mp cresc. mf

mf cresc.

rit. 65 a tempo ♩=112 f

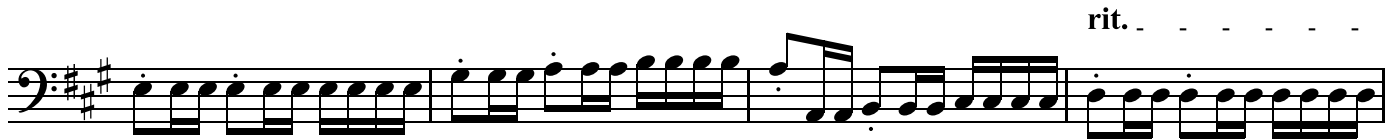
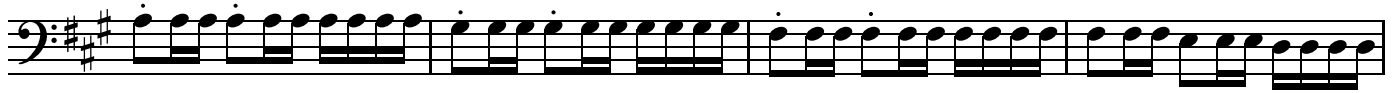
81 lo stesso tempo ♩=112

f

90

98 cresc. più forte

f



122 a tempo ♩=112 rall.

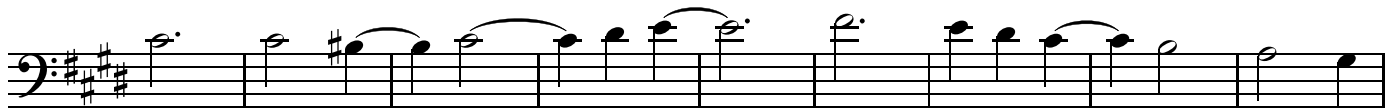


Largo

130 Andante ♩=96



D-E-B-O - R - A - H



Violoncello

f

ppocorrit.
dim. *mf*

poco meno mosso ♩=96 rit. a tempo ♩=96 poco rit. $\frac{4}{4}$

mp *dim.* *p*

a tempo ♩=96 poco rit. $\frac{2}{2}$

f

Tempo I ♩=112

mp 215 pizz.

rit.

cresc. *mf*

Lo stesso tempo ♩=112

mp

rit. a tempo ♩=112 arco

pizz.

poco rit. a tempo ♩=112 arco

f

pizz.

pizz.

arco



263



rit.



a tempo ♩=112

poco rit.



f

285 a tempo ♩=112



f

Allegro ♩=126

f *dim.* *mp*

cresc.

308

f

f

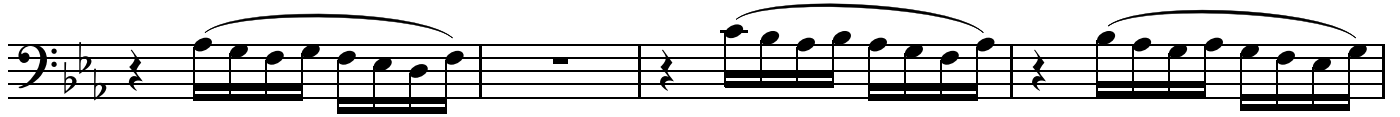
poco rit. . . a tempo ♩=126

324 pizz.

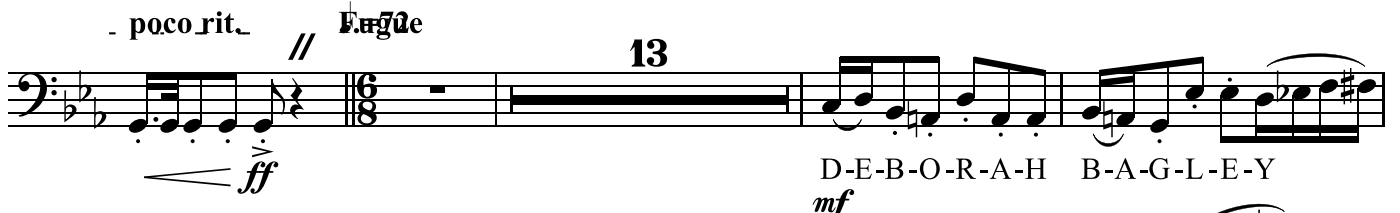
mp

arco

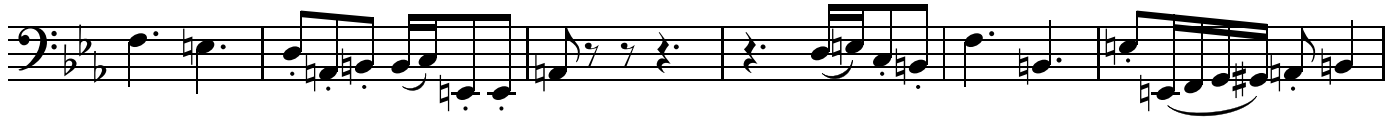
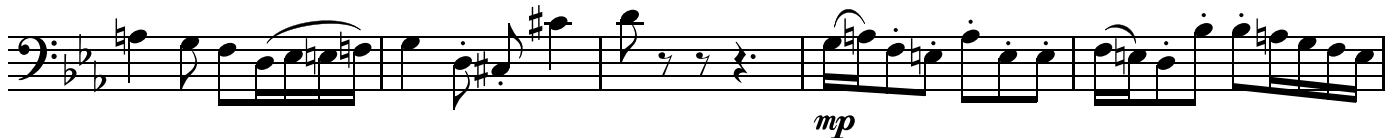
cresc. *f*



poco rit. // *ff* **13**



D-E-B-O-R-A-H B-A-G-L-E-Y



First musical staff in bass clef with a key signature of two flats. It begins with a fermata over a dotted half note, followed by a series of eighth and sixteenth notes.

Second musical staff in bass clef, starting with a fermata and a '2' above the staff, indicating a second ending or measure repeat.

D-E-B-O-R-A-H B-A-G-L-E-Y

mf

424

Third musical staff in bass clef, featuring a crescendo leading to a *mp* dynamic and a decrescendo leading to a *f* dynamic.

Fourth musical staff in bass clef, continuing the melodic line with various rhythmic patterns.

Fifth musical staff in bass clef, showing a series of eighth notes and sixteenth notes.

Sixth musical staff in bass clef, featuring a complex rhythmic pattern with many sixteenth notes.

Seventh musical staff in bass clef, continuing the intricate rhythmic patterns.

Eighth musical staff in bass clef, ending with a *pizz.* (pizzicato) instruction and a *mf* dynamic.

Ninth musical staff in bass clef, starting with an *arco* instruction and a *cresc.* (crescendo) leading to a *f* dynamic. A box with the number 459 is present.

Tenth musical staff in bass clef, beginning with a *mp* dynamic and a *cresc.* (crescendo) leading to a series of sixteenth notes.

Musical notation for the first system, measures 470-475. The key signature is two sharps (F# and C#), and the time signature is 3/4. The music begins with a dynamic marking of *f*. The notation includes a crescendo hairpin, a *rit.* marking, and a *cresc.* marking. The system concludes with a double bar line and a 3/4 time signature.

480 *più mosso* ♩=126

Musical notation for the second system, measures 476-485. The key signature is two sharps (F# and C#), and the time signature is 3/4. The music begins with a dynamic marking of *ff*. The notation includes a *rit.* marking.

496 *meno mosso* ♩=112

Musical notation for the third system, measures 486-535. The key signature is two sharps (F# and C#), and the time signature is 3/4. The music begins with a dynamic marking of *f*. The notation includes a *cresc.* marking and a *più forte* marking. The system concludes with a double bar line and a 3/4 time signature.

Violoncello

poco rit. tempo ♩=112

f

rit.

a tempo ♩=112

f *cresc.* *ff*

rall.

554 **Andante** ♩=80
6
mp *mf*

564 **Maestoso**

f

571

rit.

579

cresc. *ff*
2

Largando

cresc. *fff*