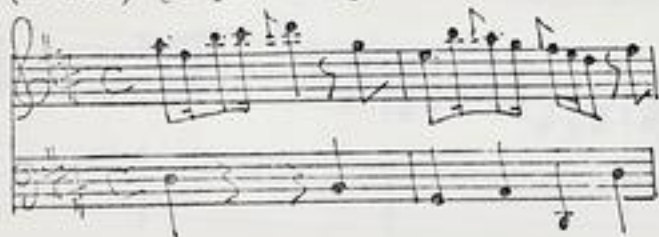


Graupner, Christoph (1683-1760)

BRD DS Mus.ms 472/4,1

Sonata a 2 Corn. 2 Violin. Viola e Cembalo Christoph Graupner/
(D-dur) [Kopftitel]



Largo C/Allegro C D-dur
- Largo C h-moll - Presto C D-dur.

Autograph ca. 1751/52. 35 x 24,5 cm.

partitur: 3 Bl.

Alte Sign.: N^{ro} 204. Stempel: L mit Krone. 4190.

4190 Sonata a 2 Corn. 2 Violin. Viola e Cembalo. Christoph Graupner. 1751-52. fol. (3)

No 204.

Largo.

Herzoglich
hessische
Bibliothek

fol. (3)

Handwritten musical score on a single page, consisting of six staves. The notation includes various note values, rests, and bar lines. The key signature is one sharp (F#), and the time signature is common time (C). The music is written in a cursive, historical style.

Handwritten musical score on a single page, consisting of six staves. The notation includes various note values, rests, and bar lines. The key signature is one sharp (F#), and the time signature is common time (C). The music is written in a cursive, historical style.

Handwritten musical score on a single page, consisting of six staves. The notation includes various note values, rests, and bar lines. The key signature is one sharp (F#), and the time signature is common time (C). The music is written in a cursive, historical style.

Handwritten musical score for the first system, consisting of five staves. The notation includes various rhythmic values, clefs, and dynamic markings.

Handwritten musical score for the second system, featuring more complex rhythmic patterns and dynamic markings like 'p' and 'pp'. The notation includes various clefs and rhythmic values.

Largo. *Da Capo al Segno*

Handwritten musical score for the third system, including the instruction 'Largo e piano' and further musical notation. The notation includes various clefs and rhythmic values.

Handwritten musical score, first system. It consists of six staves. The top two staves are in treble clef with a common time signature. The third staff is in treble clef with a key signature of one sharp (F#) and a common time signature. The fourth and fifth staves are in treble clef with a key signature of one sharp and a common time signature. The sixth staff is in bass clef with a key signature of one sharp and a common time signature. The music features various rhythmic values and melodic lines.

Handwritten musical score, second system. It consists of six staves. The top two staves are in treble clef with a common time signature. The third staff is in treble clef with a key signature of one sharp and a common time signature. The fourth and fifth staves are in treble clef with a key signature of one sharp and a common time signature. The sixth staff is in bass clef with a key signature of one sharp and a common time signature. The music continues with similar notation to the first system.

Handwritten musical score, third system. It consists of six staves. The top two staves are in treble clef with a common time signature. The third staff is in treble clef with a key signature of one sharp and a common time signature. The fourth and fifth staves are in treble clef with a key signature of one sharp and a common time signature. The sixth staff is in bass clef with a key signature of one sharp and a common time signature. The music concludes with a double bar line. The word *Breve* is written in the bottom left corner of the system.

Handwritten musical notation on six staves. The notation includes various rhythmic values such as eighth and sixteenth notes, rests, and beams. The clefs vary across the staves, including treble and bass clefs. The ink is dark and the paper shows signs of age.

Handwritten musical notation on six staves. This section continues the piece with more complex rhythmic structures, including many beamed notes and rests. The notation is dense and fills most of the staves.

Handwritten musical notation on six staves. This section shows a change in the musical texture, with some staves featuring longer note values and different rhythmic groupings. The notation remains consistent in style with the rest of the page.

Landesbibliothek
Darmstadt

Handwritten musical notation on six staves. The notation includes various rhythmic values, accidentals, and clefs. The first two staves begin with a treble clef and a common time signature (C). The third staff begins with a treble clef and a key signature of one sharp (F#). The fourth and fifth staves begin with a treble clef and a key signature of one sharp. The sixth staff begins with a bass clef and a key signature of one sharp.

Handwritten musical notation on six staves. The notation includes various rhythmic values, accidentals, and clefs. The first two staves begin with a treble clef and a common time signature (C). The third staff begins with a treble clef and a key signature of one sharp (F#). The fourth and fifth staves begin with a treble clef and a key signature of one sharp. The sixth staff begins with a bass clef and a key signature of one sharp.

Handwritten musical notation on six staves. The notation includes various rhythmic values, accidentals, and clefs. The first two staves begin with a treble clef and a common time signature (C). The third staff begins with a treble clef and a key signature of one sharp (F#). The fourth and fifth staves begin with a treble clef and a key signature of one sharp. The sixth staff begins with a bass clef and a key signature of one sharp. The notation concludes with double bar lines and repeat signs on the right side of each staff.