

Juan Cabanilles

(1644 – 1712)

Tiento lleno 1º tono

(M386 No. 79)

Transcribed and Edited by
William R. Shannon



Source: Biblioteca de Catalunya

Title: Libro de obras de organo (1722) M386

<http://cataleg.bnc.cat/record=b2263747~S13>

Tiento lleno 1° tono

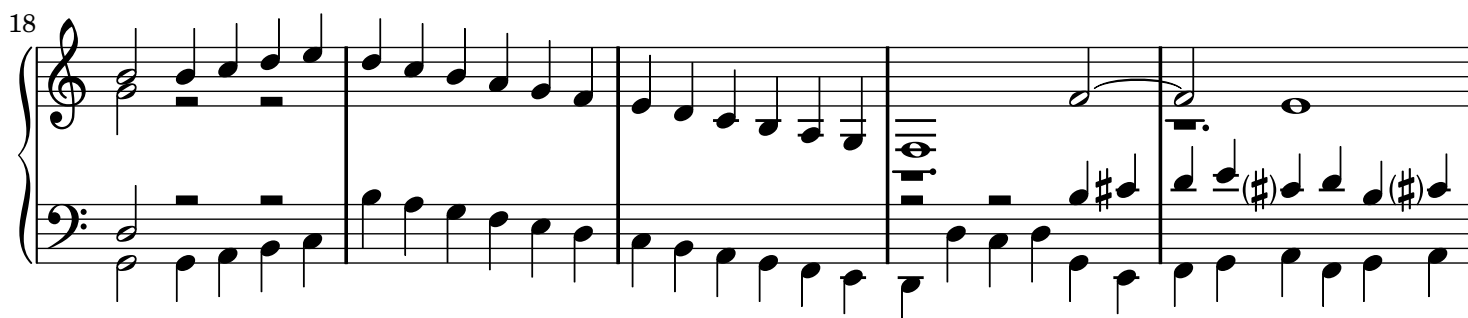
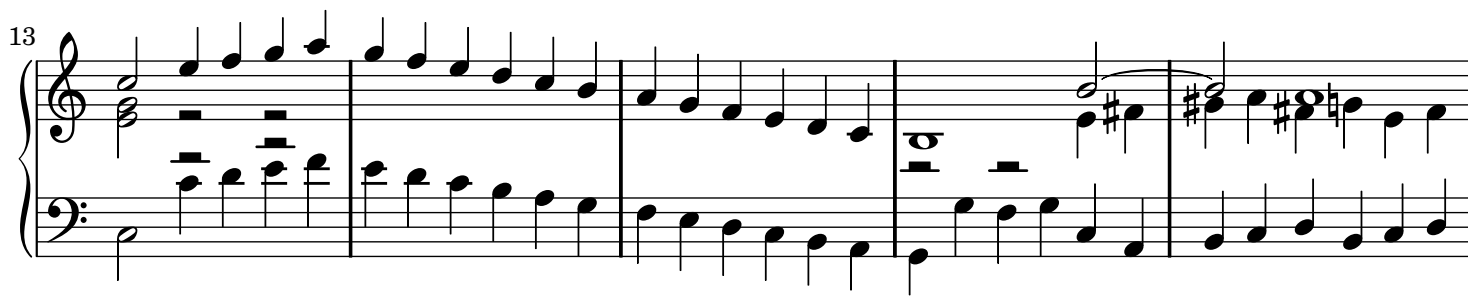
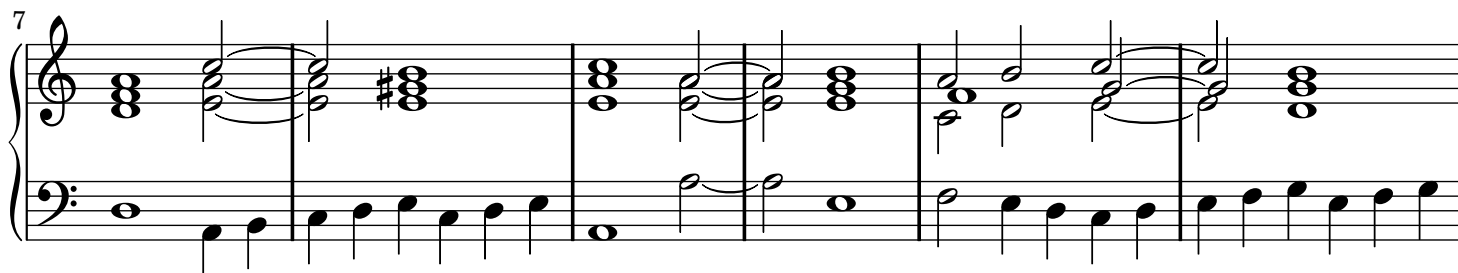
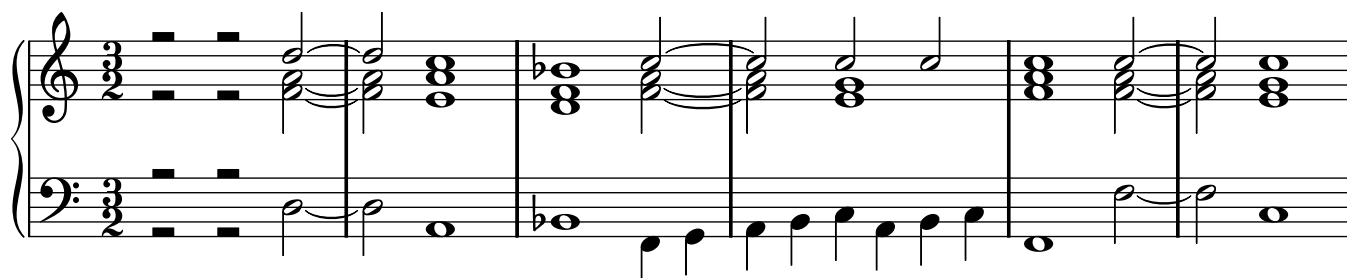
(M386 No. 79)

Juan Cabanilles (1644 - 1712)

Transcribed and edited by William R. Shannon

Source: Biblioteca de Catalunya M386

Note: Stem direction and beams have been adjusted for visual clarity over maintaining SATB voicing.



23

28

33

38

43

48

52

57

62

67

72

77

Measures 77-81. Treble clef: Measure 77 has a half note G4 and a dotted half note chord (F#4, A4). Measure 78 has a half note A4 and a dotted half note chord (G#4, B4). Measure 79 has a half note B4 and a dotted half note chord (A4, C5). Measure 80 has a half note C5 and a dotted half note chord (B4, D5). Measure 81 has a half note D5 and a dotted half note chord (C#5, E5). Bass clef: Continuous eighth-note line. Measure 77: G2, A2, B2, C3, D3, E3, F#3, G3. Measure 78: A2, B2, C3, D3, E3, F#3, G3, A3. Measure 79: B2, C3, D3, E3, F#3, G3, A3, B3. Measure 80: C3, D3, E3, F#3, G3, A3, B3, C4. Measure 81: D3, E3, F#3, G3, A3, B3, C4, D4.

82

Measures 82-86. Treble clef: Measure 82 has a half note G4 and a dotted half note chord (F#4, A4). Measure 83 has a half note A4 and a dotted half note chord (G#4, B4). Measure 84 has a half note B4 and a dotted half note chord (A4, C5). Measure 85 has a half note C5 and a dotted half note chord (B4, D5). Measure 86 has a half note D5 and a dotted half note chord (C#5, E5). Bass clef: Continuous eighth-note line. Measure 82: G2, A2, B2, C3, D3, E3, F#3, G3. Measure 83: A2, B2, C3, D3, E3, F#3, G3, A3. Measure 84: B2, C3, D3, E3, F#3, G3, A3, B3. Measure 85: C3, D3, E3, F#3, G3, A3, B3, C4. Measure 86: D3, E3, F#3, G3, A3, B3, C4, D4.

87

Measures 87-91. Treble clef: Measure 87 has an eighth-note run (G4, A4, B4, C5, D5, E5, F#5, G5). Measure 88 has an eighth-note run (A4, B4, C5, D5, E5, F#5, G5, A5). Measure 89 has an eighth-note run (B4, C5, D5, E5, F#5, G5, A5, B5). Measure 90 has an eighth-note run (C5, D5, E5, F#5, G5, A5, B5, C6). Measure 91 has an eighth-note run (D5, E5, F#5, G5, A5, B5, C6, D6). Bass clef: Measure 87 has a half note G2 and a dotted half note chord (F#2, A2). Measure 88 has a half note A2 and a dotted half note chord (G#2, B2). Measure 89 has a half note B2 and a dotted half note chord (A2, C3). Measure 90 has a half note C3 and a dotted half note chord (B2, D3). Measure 91 has a half note D3 and a dotted half note chord (C#3, E3).

92

Measures 92-96. Treble clef: Measure 92 has an eighth-note run (G4, A4, B4, C5, D5, E5, F#5, G5). Measure 93 has an eighth-note run (A4, B4, C5, D5, E5, F#5, G5, A5). Measure 94 has an eighth-note run (B4, C5, D5, E5, F#5, G5, A5, B5). Measure 95 has an eighth-note run (C5, D5, E5, F#5, G5, A5, B5, C6). Measure 96 has an eighth-note run (D5, E5, F#5, G5, A5, B5, C6, D6). Bass clef: Measure 92 has a half note G2 and a dotted half note chord (F#2, A2). Measure 93 has a half note A2 and a dotted half note chord (G#2, B2). Measure 94 has a half note B2 and a dotted half note chord (A2, C3). Measure 95 has a half note C3 and a dotted half note chord (B2, D3). Measure 96 has a half note D3 and a dotted half note chord (C#3, E3).

97

Measures 97-101. Treble clef: Measure 97 has an eighth-note run (G#4, A4, B4, C5, D5, E5, F#5, G5). Measure 98 has an eighth-note run (A4, B4, C5, D5, E5, F#5, G5, A5). Measure 99 has an eighth-note run (B4, C5, D5, E5, F#5, G5, A5, B5). Measure 100 has an eighth-note run (C5, D5, E5, F#5, G5, A5, B5, C6). Measure 101 has an eighth-note run (D5, E5, F#5, G5, A5, B5, C6, D6). Bass clef: Measure 97 has a half note G2 and a dotted half note chord (F#2, A2). Measure 98 has a half note A2 and a dotted half note chord (G#2, B2). Measure 99 has a half note B2 and a dotted half note chord (A2, C3). Measure 100 has a half note C3 and a dotted half note chord (B2, D3). Measure 101 has a half note D3 and a dotted half note chord (C#3, E3).

102

Measures 102-106. Treble clef: Measure 102 has an eighth-note run (G#4, A4, B4, C5, D5, E5, F#5, G5). Measure 103 has an eighth-note run (A4, B4, C5, D5, E5, F#5, G5, A5). Measure 104 has an eighth-note run (B4, C5, D5, E5, F#5, G5, A5, B5). Measure 105 has an eighth-note run (C5, D5, E5, F#5, G5, A5, B5, C6). Measure 106 has an eighth-note run (D5, E5, F#5, G5, A5, B5, C6, D6). Bass clef: Measure 102 has a half note G2 and a dotted half note chord (F#2, A2). Measure 103 has a half note A2 and a dotted half note chord (G#2, B2). Measure 104 has a half note B2 and a dotted half note chord (A2, C3). Measure 105 has a half note C3 and a dotted half note chord (B2, D3). Measure 106 has a half note D3 and a dotted half note chord (C#3, E3).

107

112

116

120

126

132

Measures 132-136 of the musical score. The system consists of two staves. The right staff (treble clef) contains a melody with a key signature of one sharp (F#) and a time signature of 3/2. The left staff (bass clef) contains a bass line with a key signature of one flat (Bb) and a time signature of 3/2. The music features a mix of eighth and sixteenth notes, with some rests and ties.

137

Measures 137-141 of the musical score. The system consists of two staves. The right staff (treble clef) contains a melody with a key signature of one sharp (F#) and a time signature of 3/2. The left staff (bass clef) contains a bass line with a key signature of one flat (Bb) and a time signature of 3/2. The music features a mix of eighth and sixteenth notes, with some rests and ties.

142

Measures 142-147 of the musical score. The system consists of two staves. The right staff (treble clef) contains a melody with a key signature of one sharp (F#) and a time signature of 3/2. The left staff (bass clef) contains a bass line with a key signature of one flat (Bb) and a time signature of 3/2. The music features a mix of eighth and sixteenth notes, with some rests and ties.


148

Measures 148-153 of the musical score. The system consists of two staves. The right staff (treble clef) contains a melody with a key signature of one sharp (F#) and a time signature of 3/2. The left staff (bass clef) contains a bass line with a key signature of one flat (Bb) and a time signature of 3/2. The music features a mix of eighth and sixteenth notes, with some rests and ties.

154

Measures 154-159 of the musical score. The system consists of two staves. The right staff (treble clef) contains a melody with a key signature of one sharp (F#) and a time signature of 3/2. The left staff (bass clef) contains a bass line with a key signature of one flat (Bb) and a time signature of 3/2. The music features a mix of eighth and sixteenth notes, with some rests and ties. The system ends with a double bar line and a repeat sign.

160




Measures 160-165. The music is in 3/4 time. The treble staff features a melody with eighth and quarter notes, while the bass staff provides a harmonic accompaniment with chords and single notes. Measure 165 ends with a repeat sign.

166



Measures 166-171. The melody continues with a mix of eighth and quarter notes. The bass line consists of chords and single notes. Measure 171 ends with a repeat sign.

172



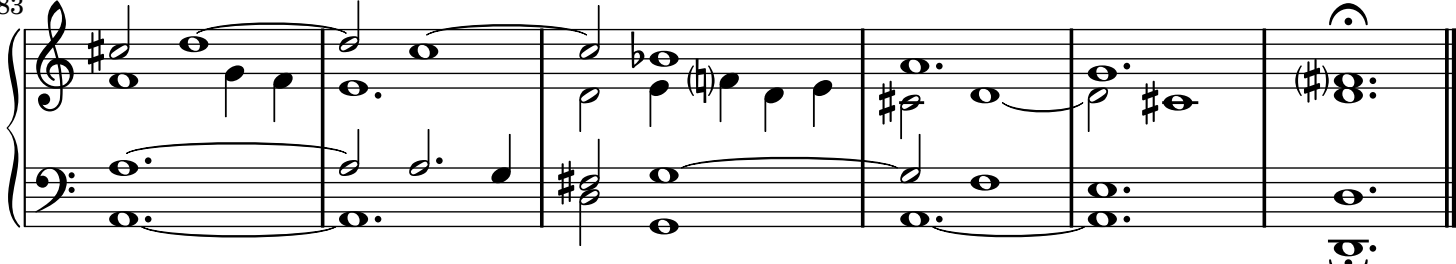
Measures 172-177. This section includes a key signature change to one sharp (F#) in measure 175. The melody features a half note and a quarter note. The bass line has a half note and a quarter note. Measure 177 ends with a repeat sign.

178



Measures 178-182. The melody continues with a mix of eighth and quarter notes. The bass line consists of chords and single notes. Measure 182 ends with a repeat sign.

183



Measures 183-187. The melody continues with a mix of eighth and quarter notes. The bass line consists of chords and single notes. Measure 187 ends with a repeat sign.