

Konzert für Oboe und Orchester B-Dur

Viola

op.12

Christian Frederik Barth
(1787-1861)

Adagio

Measures 1-3 of the Viola part. The music begins with a half rest, followed by a quarter note G4, a quarter note A4, and a quarter note B4. The dynamics are marked *p* at the beginning and *ffz* at the end of the first line.

4

Measures 4-6 of the Viola part. Measure 4 starts with a half rest, followed by a quarter note G4, a quarter note A4, and a quarter note B4. The dynamics are marked *p* at the beginning of measure 5.

7

Measures 7-10 of the Viola part. Measure 7 starts with a half rest, followed by a quarter note G4, a quarter note A4, and a quarter note B4. The dynamics are marked *ffz* at the beginning of measure 7.

11

Allegro risoluto

Measures 11-13 of the Viola part. Measure 11 starts with a half rest, followed by a quarter note G4, a quarter note A4, and a quarter note B4. The dynamics are marked *rall.* at the beginning of measure 12 and *f* at the beginning of measure 13.

14

Measures 14-16 of the Viola part. Measure 14 starts with a half rest, followed by a quarter note G4, a quarter note A4, and a quarter note B4. The dynamics are marked *f* at the beginning of measure 15.

17

Adagio

Measures 17-20 of the Viola part. Measure 17 starts with a half rest, followed by a quarter note G4, a quarter note A4, and a quarter note B4. The dynamics are marked *p* at the beginning of measure 17, *ffz* at the beginning of measure 19, and *pizz.* at the beginning of measure 20.

21

Moderato

Measures 21-24 of the Viola part. Measure 21 starts with a half rest, followed by a quarter note G4, a quarter note A4, and a quarter note B4. The dynamics are marked *arco p* at the beginning of measure 21.

25

Measures 25-28 of the Viola part. Measure 25 starts with a half rest, followed by a quarter note G4, a quarter note A4, and a quarter note B4. The dynamics are marked *rall.* at the beginning of measure 26.

29

Measures 29-31 of the Viola part. Measure 29 starts with a half rest, followed by a quarter note G4, a quarter note A4, and a quarter note B4. The dynamics are marked *a tempo* at the beginning of measure 29. Measure 31 ends with a double bar line and a fermata.

34



40



45



50

Allegro

52



56



60



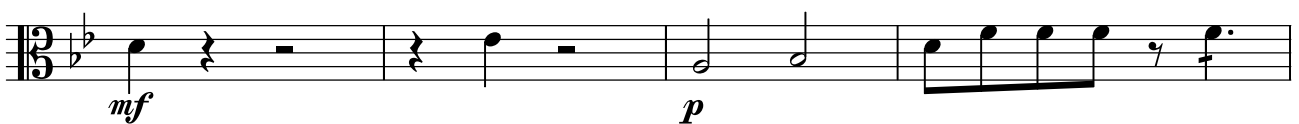
63



67



71



75



79



82



84



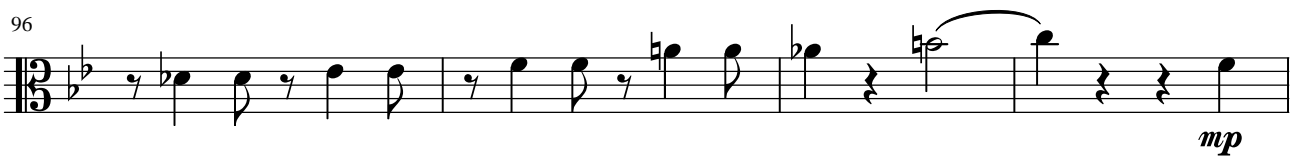
88



92



96



100



104



109



114



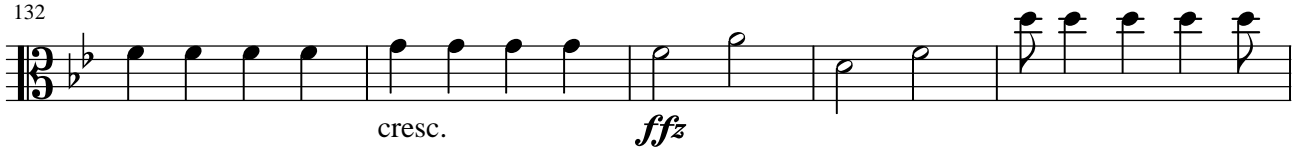
118



126



132



137



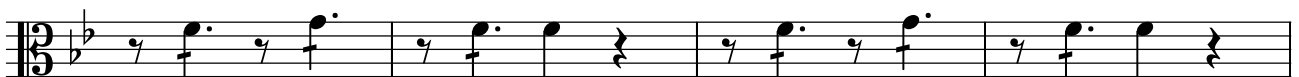
141



145



149



153



158



162



166



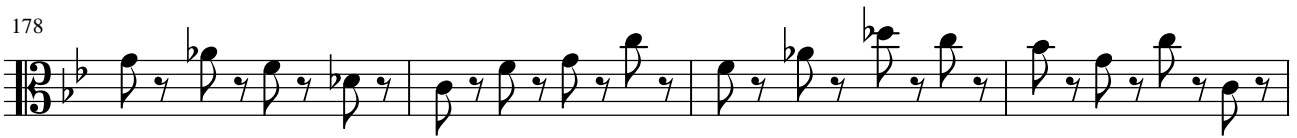
170



174



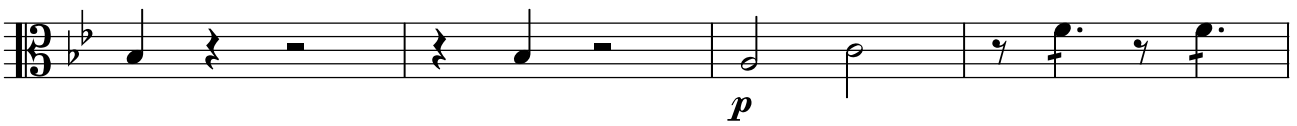
178



182



186



190



194



197



199



203



210



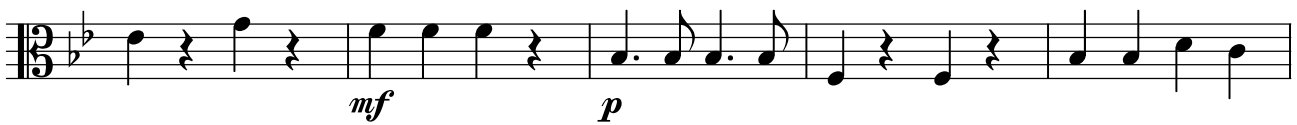
214



218



223



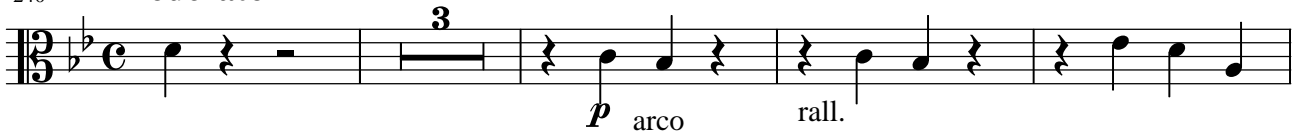
228



234



240

Moderato

247

Allegro

253



260



265

