

# TRE DUETTI

Per due Violini

Composti

per uso degli Allievi del R. Conservatorio di Musica

DA

ALESSANDRO ROLLA

Primo Violino della Camera e Cappella di S. M. il Re d'Italia  
e Direttore d'orchestra al R. Teatro della Scala

Dedicati al Signore

BONIFAZIO ASIOLI

Direttore e Maestro della Camera e Cappella di S. M.  
il Re d'Italia, Censore del R. Conservatorio di Musica

dall'Editore.

Proprietà dell'Editore.

Milano.

Depositi alla Libreria R.

Presso Ferd. ARTARIA Merc. di Musica e Stampe, di contro al R. Teatro della Scala.

Prezzo L. 5 Lt.

— Haru e Sinshe inc. —

Opera 4.

dei Duetti a due Violini.

VIOLINO PRIMO

Adagio

DUETTO I.<sup>o</sup>

Allegretto

RONDÒ

VIOLINO PRIMO

*sf. p* *sf.* *pp* *p*  
*mf*  
*dolce*  
*dimin.*  
*a loco* *dolce 8va*  
*pp*



VIOLINO PRIMO

And.<sup>to</sup> Sos<sup>to</sup>  
 Duetto II. *da*  $\frac{6}{8}$

Minore *sf* *p*  
 rinforz. sempre dimi. a poco a poco *pp*

dolce *2<sup>da</sup>* Maggiore *tr* *p*

*bat* *tr* *bat* *tr* rinforzando *p*

VIOLINO PRIMO

Allegretto *n*  
RONDO

*dolce*

*rinforz*

*dolce*

8<sup>va</sup> *a loco*

*p dolce*



VIOLINO PRIMO

6

Minore

Maggiore

*pp* *mf* *sf* *p* *mf* *p* *dimin.* *pp*

*f*

Detailed description: This is a page of a musical score for the first violin (Violino Primo). The score consists of 13 staves of music. The first staff begins with a treble clef and a key signature of one flat (B-flat). The music is written in a 4/4 time signature. The score includes various musical notations such as slurs, accents, and dynamic markings. The word "Minore" is written above the second staff, and "Maggiore" is written above the fourth staff. Dynamic markings include *pp* (pianissimo), *mf* (mezzo-forte), *sf* (sforzando), *p* (piano), and *dimin.* (diminuendo). There are also some fingerings indicated by numbers 1-4. The score ends with a double bar line and repeat dots.

VIOLINO PRIMO

**Adagio**  
**DUETTO**  
 5:20

This section consists of two staves of music. The first staff begins with a treble clef, a key signature of one flat (B-flat), and a 3/8 time signature. It contains several measures of music with dynamics such as *p* (piano) and *mf* (mezzo-forte). The second staff continues the piece with similar dynamics and includes markings for *dimin.* (diminuendo) and *pp* (pianissimo). The music is characterized by flowing lines and some complex fingering, with numbers like 6, 8, and 12 indicating fingerings or positions.

**Allegretto**  
**RONDO**  
 dolce

This section consists of two staves of music. The first staff begins with a treble clef, a key signature of one flat (B-flat), and a 3/8 time signature. It is marked *dolce* (softly). The music is more rhythmic and includes dynamics such as *p* (piano) and *mf* (mezzo-forte). The second staff continues the piece with similar dynamics and includes markings for *pp* (pianissimo) and *mf* (mezzo-forte). The music features a mix of eighth and sixteenth notes, with some complex fingering and articulation.



VIOLINO PRIMO

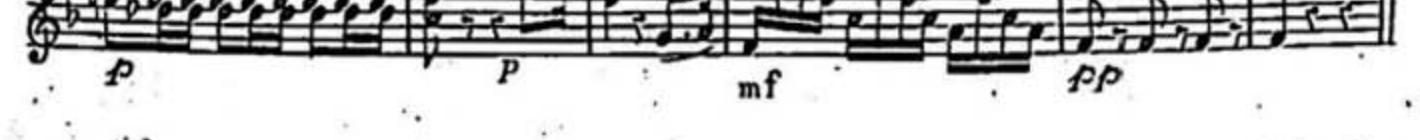
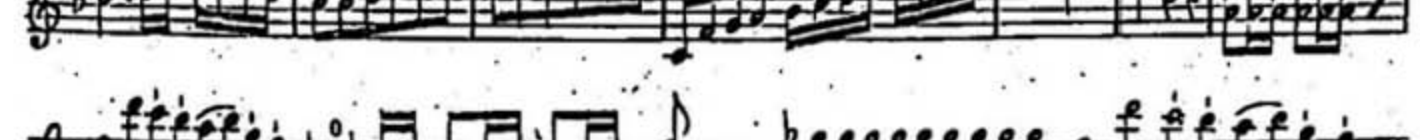
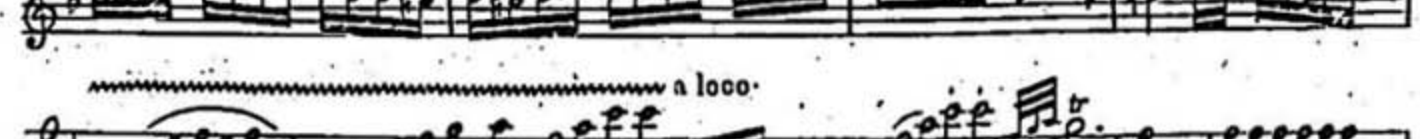
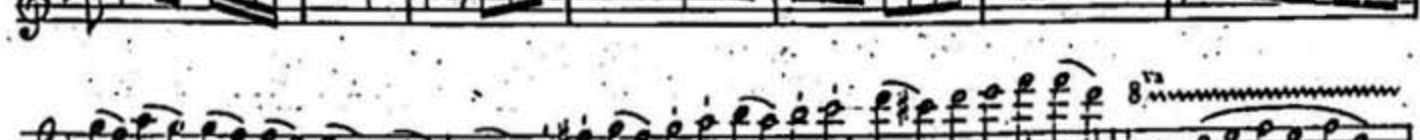
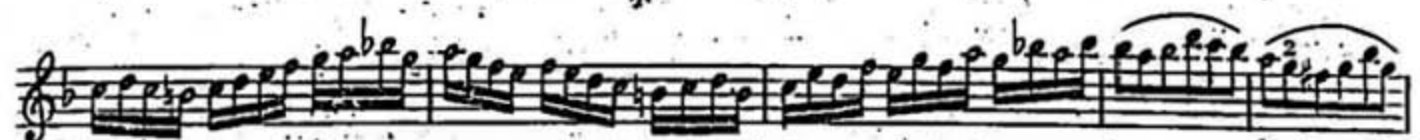
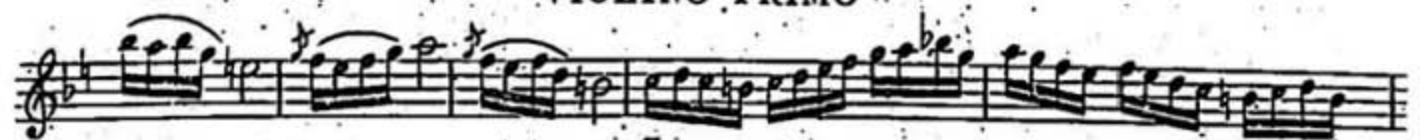
This musical score for Violino Primo consists of ten staves of music. The notation includes various dynamics and articulations:

- Staff 1: *p* (piano)
- Staff 2: *dolce* (softly), *sf* (sforzando)
- Staff 3: *p*, *mf*, *sf*, *mf*
- Staff 4: *mf*
- Staff 5: *8va* (octave up), *a loto* (allegretto)
- Staff 6: *p*
- Staff 7: *p*
- Staff 8: *p*
- Staff 9: *p*
- Staff 10: *p*

The score features complex rhythmic patterns, including sixteenth and thirty-second notes, and includes performance markings such as accents, slurs, and fingerings (e.g., 2, 3, 4, 2, 3, 4).



VIOLINO PRIMO



# TRE DUETTI

Per due Violini

Composti.

per uso degli Allievi del R. Conserv. di Milano

DA

## ALESSANDRO ROLLA

Primo Violino della Camera e Cappella di S. M. il Re il Re di Sicilia  
e Direttore d'orchestra al R. Teatro della Scala

Dedicati al Signor

## BONIFAZIO ASIOLI

Direttore e Maestro della Camera e Cappella di S. M.  
il Re di Sicilia, Censore del R. Conserv. di Musica  
dell'Editore.

Proprietà dell'Editore.

### Milano.

Depositi alla Bibliot. R.

Presso Ferd. ARTARIA Merc. di Musica e Stampe, di contro al R. Teatro della Scala

Prezzo L. 5 Lt.

— Marin e Strecht inc. —

Opera 4.

dei Duetti a due Violini.

Adagio:

## DUETTO I.

Allegro

## RONDO



VIOLINO, SECONDO

Musical score for Violino Secondo, page 3. The score consists of 12 staves of music in a single system. The key signature has two flats (B-flat and E-flat), and the time signature is 3/4. The music is primarily composed of sixteenth and thirty-second notes, often in beamed pairs or groups. Dynamics include *p*, *sf*, *mf*, and *pp*. There are first and second endings marked with 'I' and 'II'. A *dol.* (dolando) marking is present in the fifth staff. The piece concludes with a double bar line and repeat signs.

VIOLINO SECONDO

4

Andante Sostenuto

DUETTO II.

Minore

sf. mf

rf. diminuendo pp

I.<sup>ma</sup> II.<sup>da</sup> Maggiore

rf p

pp

Allegretto

RONDO

dolce

rf p

VIOLINO SECONDO

The musical score for Violino Secondo on page 5 consists of 12 staves of music. The notation includes various dynamics such as *p*, *sfz*, *pp*, *mf*, and *f*. There are also markings for *Minore* and *Maggiore* indicating key changes. The music features complex rhythmic patterns, trills, and slurs. The score is written in a single system with 12 staves.



**DUETTO III** *Adagio*

*p* *sf* *mf* *diminuendo*

**RONDO** *Allegretto*

*dol.* *p* *sf* *mf* *pp* *mf*

VIOLINO SECONDO

Musical score for Violino Secondo, page 7. The score consists of 14 staves of music in a single system. The music is written in a treble clef with a key signature of one flat (B-flat). The tempo and meter are not explicitly stated but appear to be a moderate, steady pace. The score features a variety of rhythmic patterns, including eighth and sixteenth notes, and rests. Dynamic markings such as *p*, *sf*, *mf*, *pp*, and *rinf* are used throughout. A first ending bracket labeled *I* is present in the 7th staff. The piece concludes with a double bar line and repeat slashes in the 14th staff.