

Fasch, Johann Friedrich (1688-1758) BRD DS Mus.ms 302/6

D.⁴. / ^[Sinfonia] Symphonia. / A / 2. Violini, / Viola, / et / Basso. / di / Fasch. /
[Incipit] /

Ms. ca. 1750 (Endler). 35 x 23 cm.

4 St.: vla, b (3x). vl 1, 2 fehlen!
je 2 Bl.

Incipit vgl. Mus.ms 301/2.

Mus. Ms. 302

Landes-Bibliothek
Mus.
302
Bd. 6
Darmstadt

f. 11.

D. #.

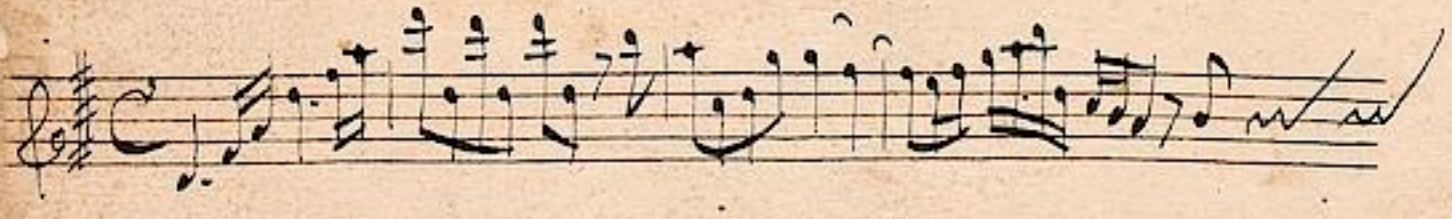
6.

Symphonia. 9.

2. Violini^a
Viola,
et
Basso.

fol. 9/1-9

Di
Fasch.



Viola.



Viola.

Allegro.

The image shows a page of handwritten musical notation for a Viola part. The score is written on 13 staves. It begins with a treble clef, a key signature of one sharp (F#), and a common time signature (C). The tempo is marked 'Allegro.' in the top left corner. The music consists of a series of melodic lines with various rhythmic values, including eighth and sixteenth notes, and rests. There are several dynamic markings, including 'f' (forte) and 'sfz' (sforzando), scattered throughout the piece. The notation is clear and legible, with some ink bleed-through from the reverse side of the page. The paper appears aged and slightly yellowed.

Handwritten musical score on five staves. The notation includes treble clefs, a key signature of one sharp (F#), and a 2/4 time signature. The music features complex rhythmic patterns with many sixteenth and thirty-second notes. Dynamic markings 'pian' and 'fob.' are present.

Handwritten musical score on five staves. The notation includes treble clefs, a key signature of one sharp (F#), and a 2/4 time signature. The music continues with similar complex rhythmic patterns. Dynamic markings 'pian' and 'pianissimo' are present.

Vivace.

Vivace.

3
8

Basso.



Basso.

Allegro.

This image shows a page of handwritten musical notation for a Bass part. The score begins with the tempo marking "Allegro." in the top left corner. The music is written on twelve staves, each starting with a treble clef and a key signature of one sharp (F#). The notation includes a variety of rhythmic patterns, such as eighth and sixteenth notes, and rests. There are several dynamic markings throughout the piece, including "pian." (piano) and "pian." (piano) with a hairpin symbol. The handwriting is in dark ink on aged, slightly yellowed paper. The right edge of the page shows the beginning of the next page, with some notes and a "pian." marking visible.



9.

Andante. *piano.*

pianissimo

Vivace.

Vivace.

A handwritten musical score on six staves. The first staff begins with the tempo marking 'Vivace.' and a 3/8 time signature. The music is written in a single system across six staves. The notation includes various note values, rests, and dynamic markings such as 'p' and 'f'. The paper is aged and shows some wear at the edges.

Basso.



Basso.

Allegro.

Handwritten musical notation on five staves. The notation includes various rhythmic values, accidentals, and dynamic markings. The first staff begins with a treble clef and a key signature of one sharp (F#). The music is dense and intricate, with many beamed notes and slurs.

Andante. $\text{C} \frac{2}{4}$

piano

pianissimo

Handwritten musical notation on seven staves. The notation begins with the tempo marking "Andante." and a 2/4 time signature. The dynamic markings "piano" and "pianissimo" are present. The music continues with complex rhythmic patterns and accidentals, ending with a double bar line and repeat dots.

Divise.

Vivace. $\text{C}\sharp$ $\frac{3}{8}$

pian.

7

Passv.



Basso.

Allegro

Handwritten musical score for Bassoon, page 9. The score consists of 12 staves of music in G major (one sharp) and 3/4 time. The tempo is marked 'Allegro'. The notation includes various rhythmic patterns, including sixteenth and thirty-second notes, and rests. A 'pian.' marking is present on the 10th staff. The manuscript shows signs of age, with some staining and wear at the edges.



Handwritten musical score on six staves. The notation includes various rhythmic values, accidentals, and dynamic markings. A '4.' is written above the third staff.

Handwritten musical score on six staves. The first staff begins with the tempo marking *Andante* and the dynamic marking *piano*. The notation continues with various rhythmic patterns and accidentals.

Allegro.

Vivace.