

GLORIA'S ROMANCE

Viola

Music by
JEROME KERN

1 *Poco Maestoso*

ff

poco rit

Rather Slowly

p. mf

Copyright 1916 by T. B. Harms & Francis, Day & Hunter,
International Copyright Secured.

All Rights Reserved

Viola
-2-

1

2

Grazioso

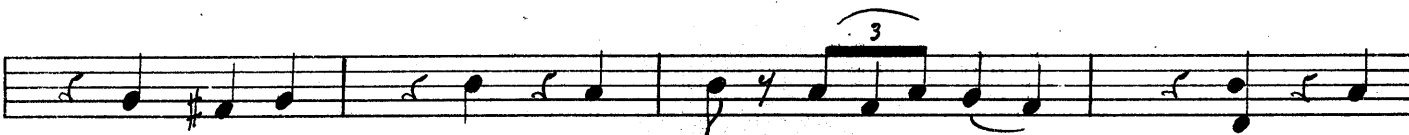
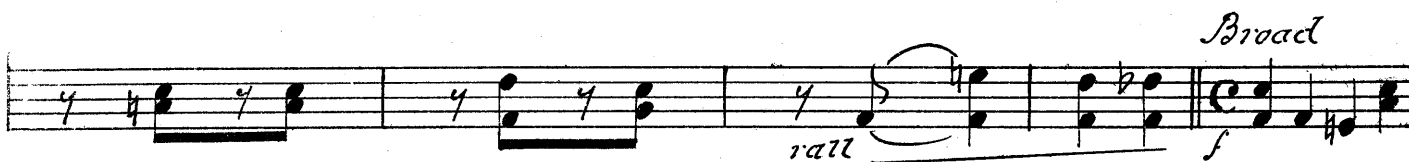
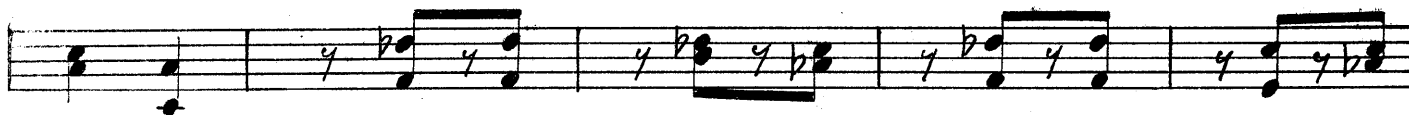
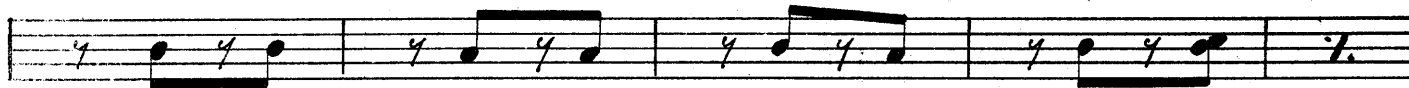
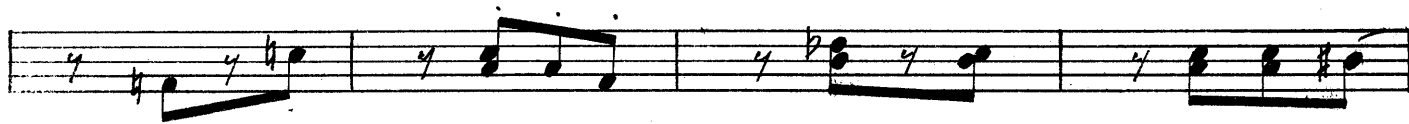
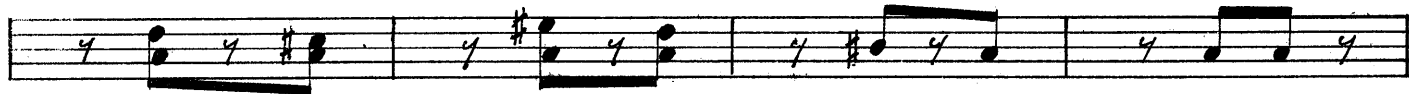
poco meno

mp

Very slow

rit

Viola
3



Valse mod^{to}

2

f *rall*

mf

Fine

rall *D.S. al fine*

Viola
5

Gravioso

3

Musical staff 1 of section 3, starting with a treble clef, a key signature of one flat (B-flat), and a 3/4 time signature. The music begins with a mezzo-forte (*mf*) dynamic. The notes are: G4, A4, Bb4, C5, Bb4, A4, G4.

Musical staff 2 of section 3. The notes are: G4, A4, Bb4, C5, Bb4, A4, G4.

Musical staff 3 of section 3. The notes are: G4, A4, Bb4, C5, Bb4, A4, G4.

Musical staff 4 of section 3. The notes are: G4, A4, Bb4, C5, Bb4, A4, G4.

Musical staff 5 of section 3. The notes are: G4, A4, Bb4, C5, Bb4, A4, G4.

Musical staff 6 of section 3, marked *Solo*. It begins with a forte (*f*) dynamic and a *Mod. to energico* instruction. The notes are: G4, A4, Bb4, C5, Bb4, A4, G4. The staff includes performance markings: *to*, *rall*, and *pizz*.

4

Musical staff 1 of section 4, starting with a treble clef, a key signature of one flat (B-flat), and a 2/4 time signature. The music begins with a fortissimo (*ff*) dynamic. The notes are: G4, A4, Bb4, C5, Bb4, A4, G4.

Musical staff 2 of section 4. The notes are: G4, A4, Bb4, C5, Bb4, A4, G4. The dynamic is mezzo-piano (*mp*).

Musical staff 3 of section 4. The notes are: G4, A4, Bb4, C5, Bb4, A4, G4.

Musical staff 4 of section 4. The notes are: G4, A4, Bb4, C5, Bb4, A4, G4.

Musical staff 5 of section 4. The notes are: G4, A4, Bb4, C5, Bb4, A4, G4.

Musical staff 6 of section 4. The notes are: G4, A4, Bb4, C5, Bb4, A4, G4.

Viola
- 6 -

Rather Slowly

Musical score for Viola, measures 1-10. The score is written on ten staves. The first staff begins with a treble clef, a key signature of one flat (B-flat), and a common time signature (C). The tempo marking *Rather Slowly* is written above the first staff. The dynamic marking *p-mf* is written below the first staff. The music consists of a series of chords and melodic lines, with some notes marked with accents (>) and slurs. The first staff ends with a repeat sign. The second staff continues the melodic line. The third staff has a sharp sign (#) above a note. The fourth staff has a sharp sign (#) above a note and a slur. The fifth staff continues the melodic line. The sixth staff continues the melodic line. The seventh staff continues the melodic line. The eighth staff continues the melodic line. The ninth staff continues the melodic line. The tenth staff continues the melodic line.

Poco nascente

5

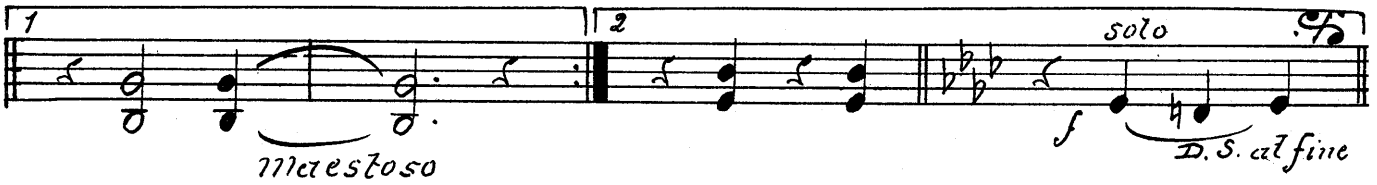
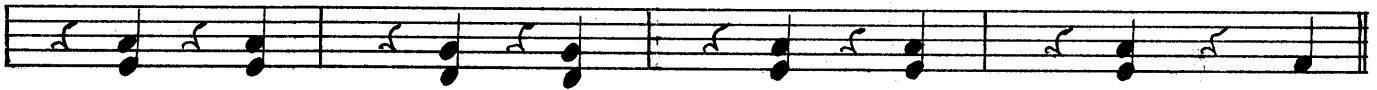
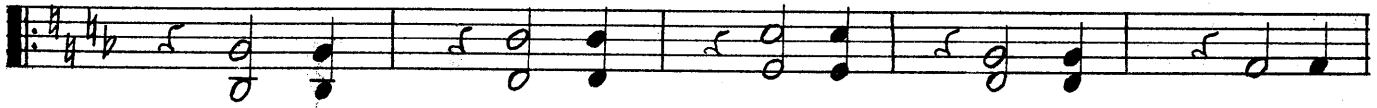
Musical score for Viola, measures 11-12. The score is written on two staves. The first staff begins with a treble clef, a key signature of one flat (B-flat), and a common time signature (C). The dynamic marking *mf* is written below the first staff. The music consists of a series of chords and melodic lines, with some notes marked with accents (>) and slurs. The first staff ends with a repeat sign. The second staff continues the melodic line.

solo

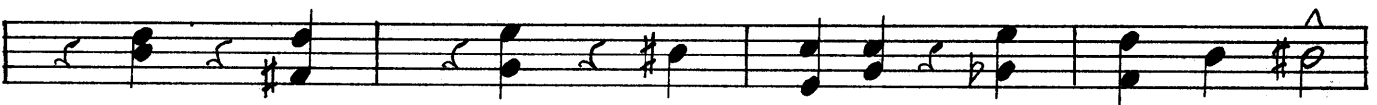
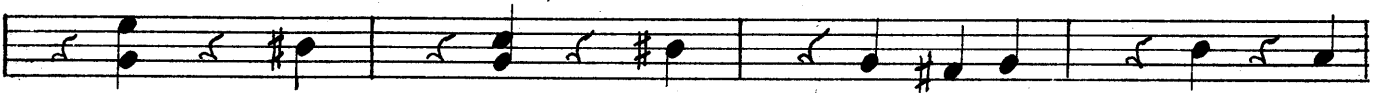
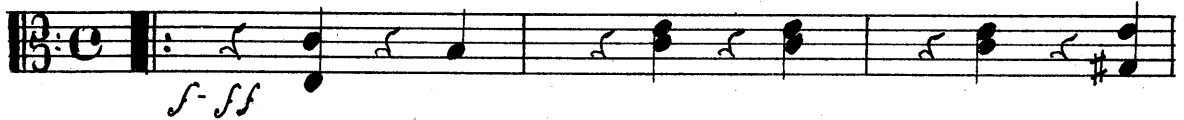
$\frac{3}{4}$

Musical score for Viola, measures 13-15. The score is written on three staves. The first staff begins with a treble clef, a key signature of one flat (B-flat), and a common time signature (C). The music consists of a series of chords and melodic lines, with some notes marked with accents (>) and slurs. The first staff ends with a repeat sign. The second staff continues the melodic line. The third staff continues the melodic line.

Viola
-7-



6



Viola
-9.

Mod.^{to} con moto

8

mp

Poco animato
Fine mp

rit D.C. al fine

9

With dignity
pizz

sf

mf

arco

And te

Fine

pizz

D. S. al fine

Viola
-11-

Maestoso

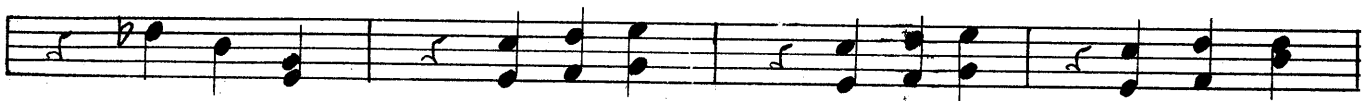
10



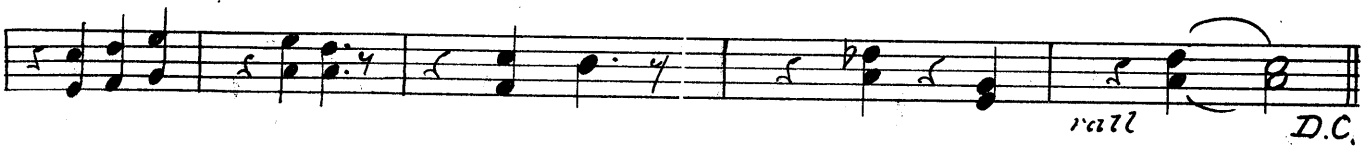
First staff of music for measure 10, starting with a forte (*f*) dynamic. The key signature has one flat and the time signature is 4/4. The music consists of a series of chords.



Second staff of music for measure 10, continuing the chordal texture.



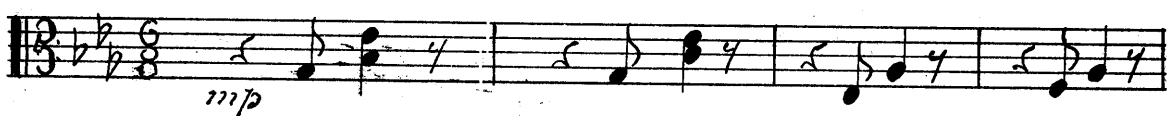
Third staff of music for measure 10, continuing the chordal texture.



Fourth staff of music for measure 10, ending with a *rall* marking and a *D.C.* (Da Capo) instruction.

Slow


11



First staff of music for measure 11, starting with a mezzo-piano (*mp*) dynamic. The key signature has two flats and the time signature is 6/8. The music consists of eighth notes.



Second staff of music for measure 11, continuing the eighth-note pattern.




Third staff of music for measure 11, including a *Mod^{to}* marking and a change to a 3/4 time signature.



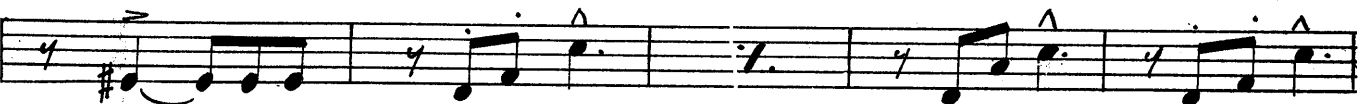
Fourth staff of music for measure 11, continuing the eighth-note pattern.

pizz

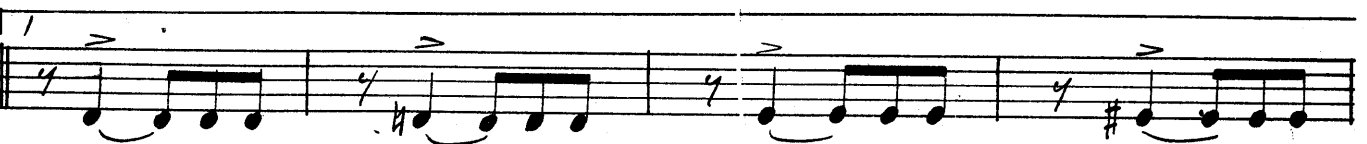
Animato (facile)



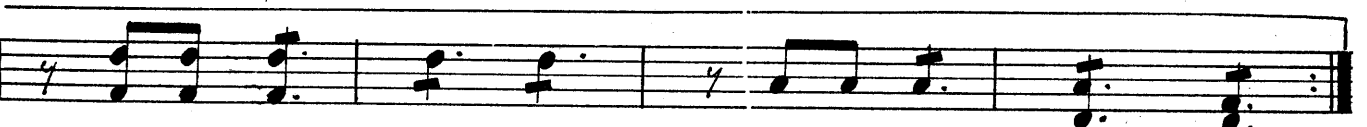
Fifth staff of music for measure 11, starting with a *Fine* marking and a mezzo-forte (*mf*) dynamic. The music consists of eighth notes with accents.



Sixth staff of music for measure 11, continuing the eighth-note pattern.



Seventh staff of music for measure 11, continuing the eighth-note pattern.



Eighth staff of music for measure 11, ending with a double bar line.

2

f meno
All: (poco agitato)
rit
dim
rall
D.C. al fine

12

pizz

13

pizz

arco

All.^o (not fast)

14

3/8 4/4 *mf*

Poco animato

mf

Deliberato

15

3/4 2/4 *mf*

Viola
15-

And.^{te} (tenderly)

16

pp

Fine

(with more warmth)

mf

D. C. al fine