

TRATTENIMENTI per CAMERA

Opus XXII, Bologna - 1660

for Trumpet, Violin & Organ

C Trumpet

Maurizio Cazzati (1616 - 1678)

Arr. Michel Rondeau

Aria (Prima parte) ♩ = 100

5

11

16

22

29

34

38

43

47

Seconda Parte

Cazzati, Opus XXII - TRATTENIMENTI per CAMERA - C Trumpet

53

Terza et Ultima parte

58

61

64

71

75

78

83

86

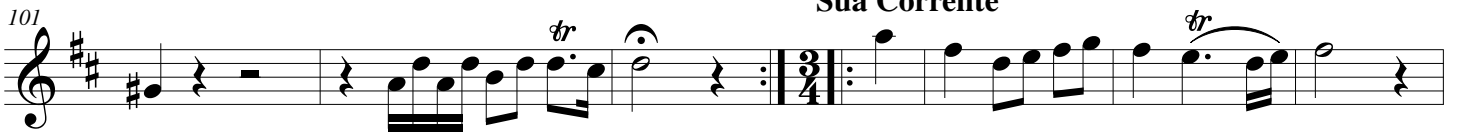
2. Ballo dell'Aria

92

95

Sua Corrente

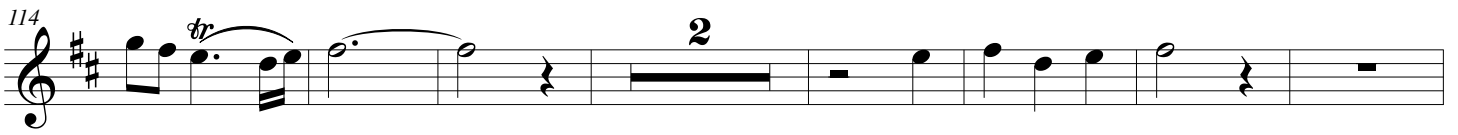
101



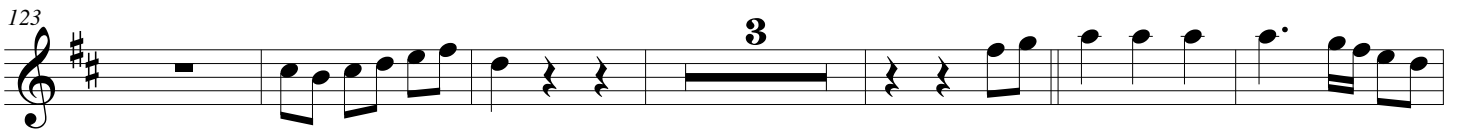
107



114



123



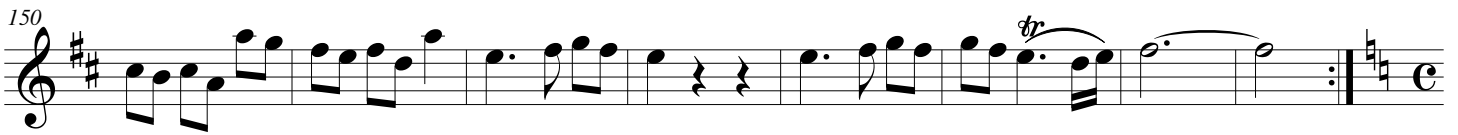
132



140

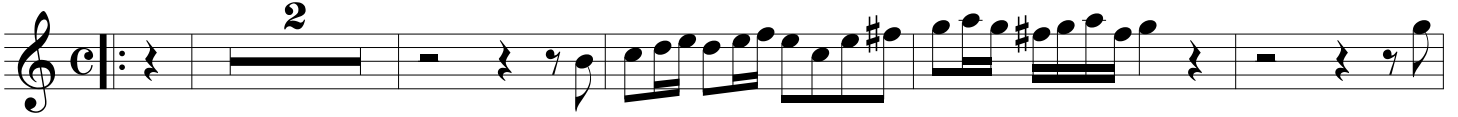


150

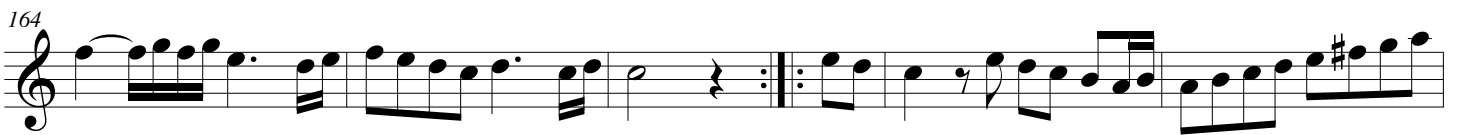


3. Ballo delle Dame

156



164



169



Sua Corrente

174



183

Musical staff starting at measure 183, featuring a double bar line with repeat dots, followed by a series of eighth and sixteenth notes, and ending with a fermata on a half note.

4. Ballo de Cavaglieri

Musical staff starting at measure 195, featuring a double bar line with repeat dots, followed by a series of eighth and sixteenth notes.

195

Musical staff starting at measure 201, featuring a double bar line with repeat dots, followed by a series of eighth and sixteenth notes.

200

Musical staff starting at measure 206, featuring a double bar line with repeat dots, followed by a series of eighth and sixteenth notes.

205

Sua Corrente 3

Musical staff starting at measure 213, featuring a double bar line with repeat dots, a 3/4 time signature, and a triplet of eighth notes.

213

Musical staff starting at measure 219, featuring a double bar line with repeat dots, a triplet of eighth notes, and a fermata.

Musical staff starting at measure 229, featuring a double bar line with repeat dots, followed by a series of eighth and sixteenth notes.

230

Musical staff starting at measure 231, featuring a double bar line with repeat dots, a trill (tr) over a note, and a fermata.

5. Ballo de Contadini

238

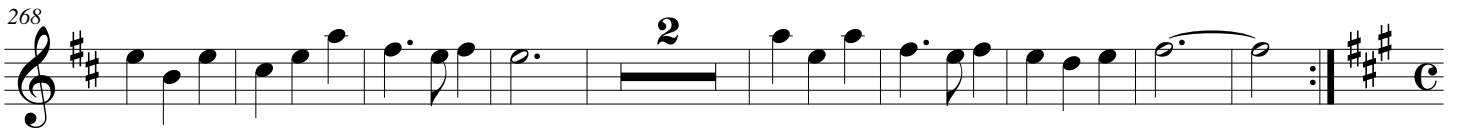
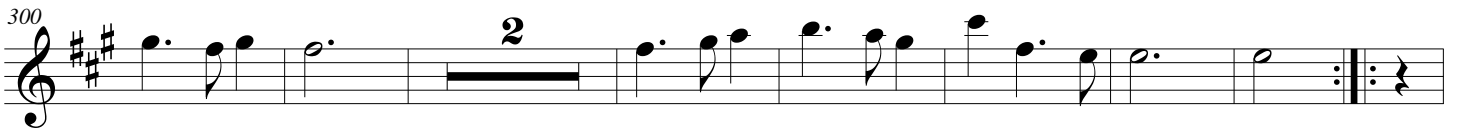
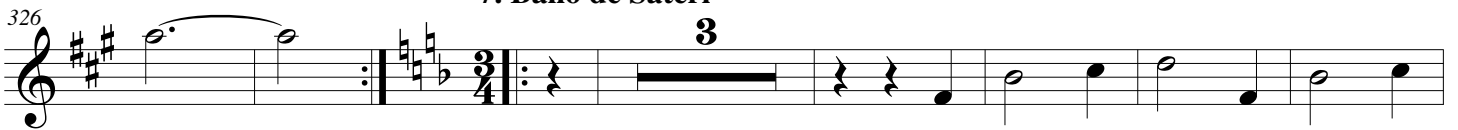
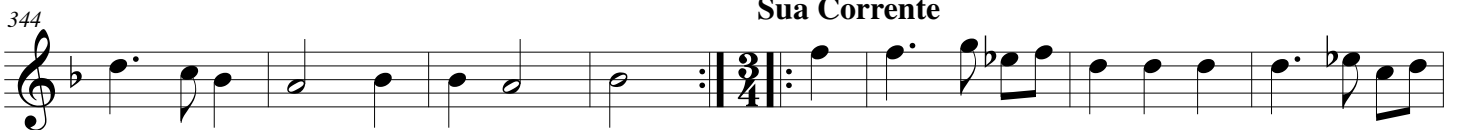
Musical staff starting at measure 239, featuring a double bar line with repeat dots, a key signature change to one sharp, and a 4/4 time signature.

244

Musical staff starting at measure 245, featuring a double bar line with repeat dots, a 2/4 time signature, and a fermata.

Sua Corrente

Musical staff starting at measure 251, featuring a double bar line with repeat dots, a 3/4 time signature, and a fermata.

**6. Ballo de Tedeschi****Sua Corrente****7. Ballo de Sateri****Sua Corrente**

351



359



8. Ballo de Matracini

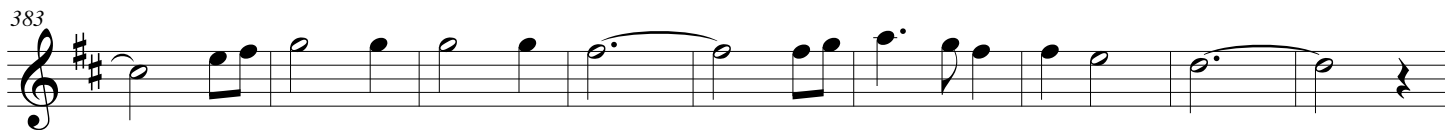
367



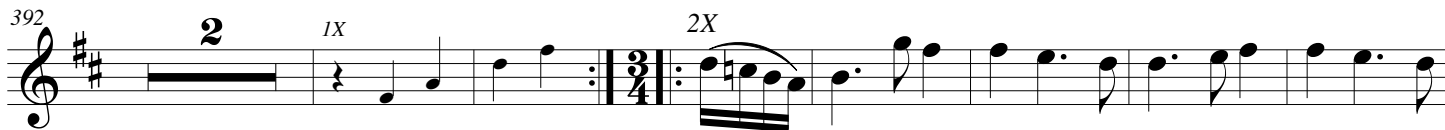
374



383



392



400

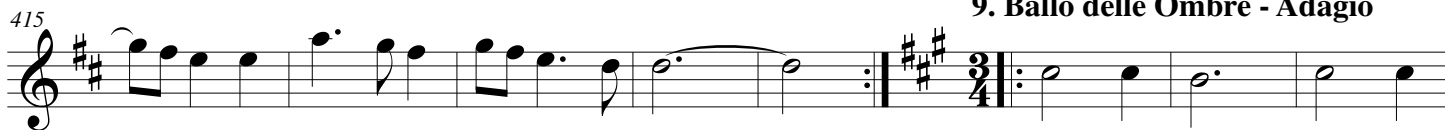


408

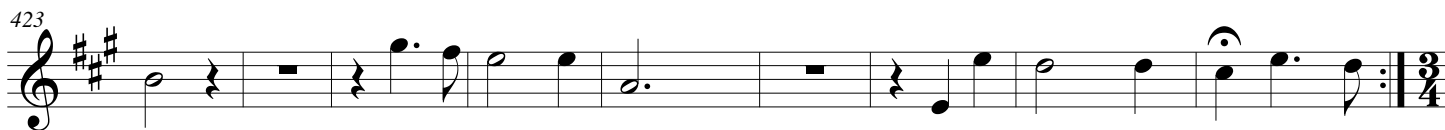


9. Ballo delle Ombre - Adagio

415



423



Sua Corrente



439 **3** **3**

450 *tr*

458 **9. Ballo delle Ninfe**

464 **2** **3**

Sua Corrente

485 **9**

500

11. Brando Primo **2X** **3X-Fine**

D.C. al Fine

514 **12. Brando Secondo**

520

13. Passacaglio
20

527

551

560

569

581

587

596

14. Ciaccona

604

612

618

625

689

2

696

3

705

3

714