

Universitätsbibliothek  
Musik Bibliothek  
Nr. 186  
Fol. 21

*Fantasia,*  
*für*  
*Violino,*  
*3*  
*Pianoforte Begleitung,*

*Et Laterbesög.*

Introduction,

Clarinetto

Violino,

Piano.

tremolo

Solo

poco f

20.

Ped

*Solo*

*Andante*  
*Sostenuto*

*And.*

*Allegro*

*Allegro*

*ritard.*

*a tempo*

*ritard.*

*a tempo*

*Tempo.*

*Andante*

*ritard.*  
*attaca*

*attaca*

*Viola*

*Flauto*

*Allegro*

*Allegro leggieramente*

Flauto  
con Octava

*f marcato*

*loco*

*fini*

*sva*

*Cadenza ad lib.*

*V. I.*

*V. I.*

*Andante.*

*Solo*

*Violino*

*Violino 1/2 pizzicato*

*mf*

*ben marcato.*



Handwritten musical score, first system. The top staff contains a melodic line with a fermata. The middle staff contains a complex rhythmic accompaniment with many sixteenth notes. The bottom staff contains a bass line with a fermata.

Handwritten musical score, second system. The top staff continues the melodic line. The middle staff features a tremolo effect, indicated by wavy lines and the word "tremolo" written vertically. The bottom staff continues the bass line. The word "Adagio" is written in the right margin.

Handwritten musical score, third system. The top staff continues the melodic line. The middle staff features a tremolo effect, indicated by wavy lines and the word "tremolo" written vertically. The bottom staff continues the bass line. The word "Adagio" is written in the right margin, and "Sempre tremulando" is written below it.

50

Handwritten musical score for the first system, featuring a treble clef staff with a key signature of one sharp (F#) and a common time signature (C). The bass clef staff contains chords and rests. The music includes various notes, rests, and dynamic markings such as *p* and *f*.

Handwritten musical score for the second system, continuing the piece. It includes a treble clef staff with a key signature of one sharp (F#) and a common time signature (C). The bass clef staff contains chords and rests. The music includes various notes, rests, and dynamic markings such as *p* and *f*. There are also handwritten annotations like *Clar.* and *Fag.*.

*Halling*  
*Presto.*

Handwritten musical score for the third system, starting with the title *Halling* and the tempo marking *Presto.* in large, elegant cursive. The treble clef staff contains a melodic line, and the bass clef staff contains chords and rests.



A musical staff containing a sequence of notes and accidentals. The notes are mostly quarter notes, with some beamed eighth notes. Accidentals include sharps and naturals.

A piano accompaniment staff featuring chords and dynamics. It includes a piano (*p*) dynamic marking and a crescendo hairpin. The chords are primarily triads and dyads.

A musical staff containing a sequence of notes and accidentals, similar in style to the first staff.

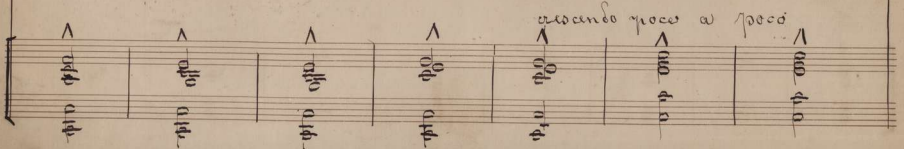
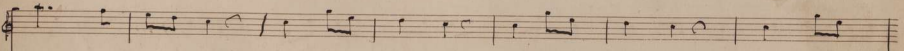
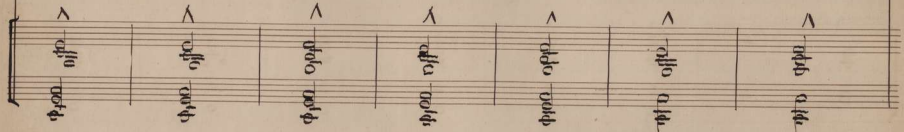
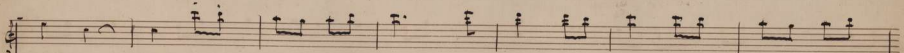
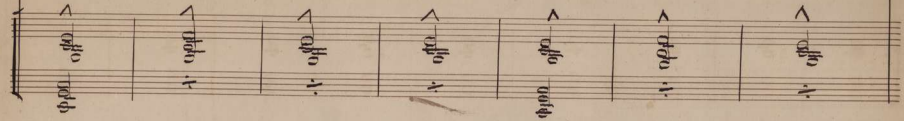
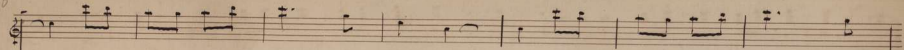
A piano accompaniment staff featuring chords and dynamics. It includes a piano (*p*) dynamic marking and a crescendo hairpin. The chords are primarily triads and dyads.

A musical staff containing a sequence of notes and accidentals, similar in style to the first staff.

A piano accompaniment staff featuring chords and dynamics. It includes a piano (*p*) dynamic marking and a crescendo hairpin. The chords are primarily triads and dyads.

*2. 1.*

*2. 1.*



accelerando poco a poco

*ritard*

*Vivace*

Fl.  
Obi.  
& Vio.

*Tempo 1<sup>mo</sup>*

*Tempo 1.º*