

Duo pour 2 violoncelles op.51 n°3

Violoncelle II

Jacques OFFENBACH

(1819-1880)

Allegro

9

18

39

50

61

90

f

102

p

113

122

131

141

153

166

f

177

p

187

p

197

210

223

235

246

258

268

277

288

299

308

319

p

f

p

f

p

1

331

343

353

363

373

384

394

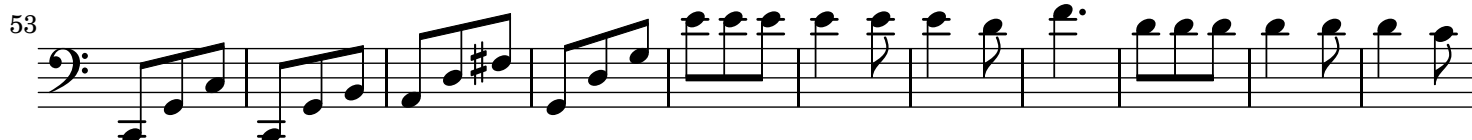
Andante

9

16

24

Allegro non troppo



112

3

f

Detailed description: This staff contains measures 112 to 125. It begins with a triplet of eighth notes. There are several rests marked with a '7' (likely indicating a 7-measure rest). The piece concludes with a forte (*f*) dynamic marking.

126

Detailed description: This staff contains measures 126 to 136. It features a series of eighth and sixteenth notes, some with slurs and accents.

137

1

Detailed description: This staff contains measures 137 to 148. It starts with a first finger (*1*) fingering. The music consists of eighth and sixteenth notes with various articulations.

149

1

p

Detailed description: This staff contains measures 149 to 161. It begins with a first finger (*1*) fingering and a piano (*p*) dynamic marking. The notes are mostly quarter and eighth notes with slurs.

162

Detailed description: This staff contains measures 162 to 175. It features a sequence of eighth notes, many of which are beamed together and have slurs.

176

Detailed description: This staff contains measures 176 to 189. It continues the sequence of beamed eighth notes with slurs.

190

Detailed description: This staff contains measures 190 to 203. It continues the sequence of beamed eighth notes with slurs.

204

Detailed description: This staff contains measures 204 to 217. It continues the sequence of beamed eighth notes with slurs.

218

Detailed description: This staff contains measures 218 to 230. It continues the sequence of beamed eighth notes with slurs.

231

1 1 2

Detailed description: This staff contains measures 231 to 240. It begins with a first finger (*1*) fingering. The music includes quarter notes, eighth notes, and rests, ending with a second finger (*2*) fingering.

244

cresc. - - - - - *f*

256

269

p

284

p

295

306

318

328

338

350

361

rall.

Detailed description of the musical score: The score is for the second cello part of a duet. It consists of ten staves of music, numbered 244 to 361. The key signature has one sharp (F#). The music features a variety of rhythmic patterns, including eighth and sixteenth notes, and rests. Dynamics range from piano (*p*) to forte (*f*). There are several slurs and accents. A crescendo is indicated between measures 244 and 269, leading to a forte dynamic. A piano dynamic is used in measures 269-284 and 284-295. A *rall.* (rallentando) marking appears at the beginning of measure 361. Fingering numbers (1, 2) are provided for some notes. The piece concludes with a double bar line in measure 361.