

Petronio Franceschini

Concerto per due trombe, archi e basso continuo (1680)

Violino I



Sonata in D

Petronio Franceschini
arr. Hendrik Jan Lindhout

Grave

I.

Musical score for the first movement, 'Grave'. The score is written in treble clef with a key signature of two sharps (D major) and a common time signature (C). It consists of three staves of music. The first staff starts with a dynamic marking of *mf* and ends with *f*. The second staff starts with a dynamic marking of *f* and ends with *f*. The third staff ends with a double bar line and a common time signature. Measure numbers 6 and 11 are indicated at the beginning of the second and third staves respectively.

II.

Allegro

Musical score for the second movement, 'Allegro'. The score is written in treble clef with a key signature of two sharps (D major) and a common time signature (C). It consists of six staves of music. The first staff starts with a dynamic marking of *f* and ends with *f*. The second staff starts with a dynamic marking of *f* and ends with *p*. The third staff starts with a dynamic marking of *p* and ends with *p*. The fourth staff starts with a dynamic marking of *cresc.* and ends with *f*. The fifth staff starts with a dynamic marking of *f* and ends with *f*. The sixth staff starts with a dynamic marking of *p* and ends with *f*. Measure numbers 6, 10, 15, 20, and 25 are indicated at the beginning of the second, third, fourth, fifth, and sixth staves respectively.

30



f

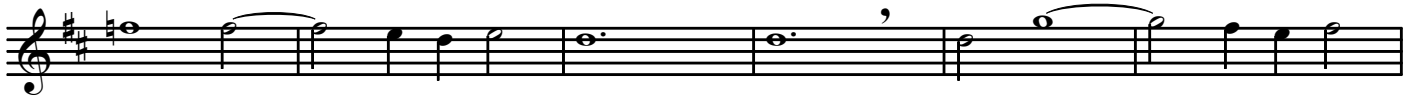
III.

Adagio

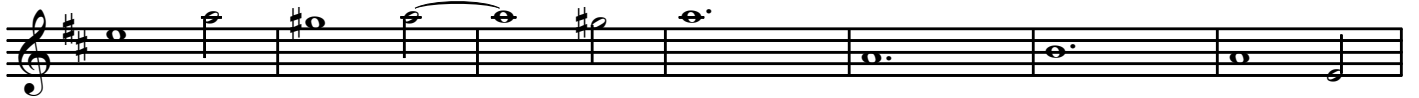


mp

7



13



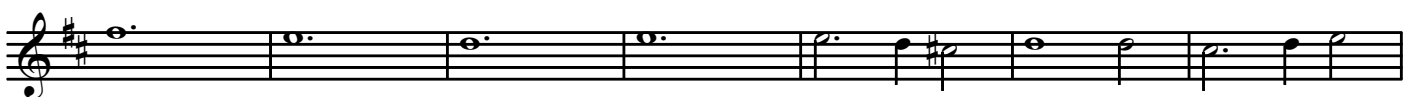
20



27



33



40



46



IV.

Allegro

f

6

f

12

17

3

25

30

tr

35

41

47

f

53