

Sonate B-Dur für Violine, Viola da gamba und B.c.

op. 1 Nr. 3

Viola (da gamba)

Gottfried Finger

Adagio

Measures 1-6 of the Viola part. The music begins with a piano (*p*) dynamic. The key signature has one flat (B-flat), and the time signature is common time (C). The notation is written on a single staff with a treble clef.

Measures 7-13. The music continues with a melodic line, featuring some dotted rhythms and eighth notes.

Measures 14-18. The music features a mix of quarter and eighth notes, maintaining the melodic flow.

Measures 19-22. Measure 19 contains a whole rest. The music resumes with a piano (*p*) dynamic. There is a noticeable increase in rhythmic activity with sixteenth notes.

Measures 23-26. The music continues with a series of sixteenth-note passages, showing technical proficiency.

Measures 27-30. The sixteenth-note passages continue, with some slurs and ties.

Measures 31-33. The music transitions to a more rhythmic pattern with eighth notes.

Measures 34-36. The music features a complex rhythmic pattern with sixteenth and thirty-second notes.

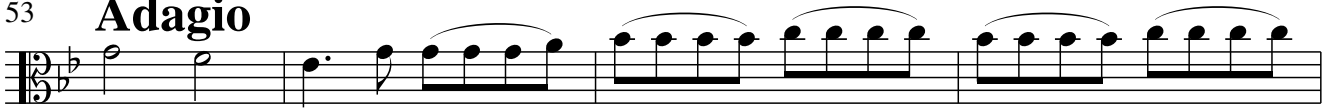
Measures 37-40. The music continues with a steady eighth-note accompaniment.

Measures 41-44. The music features a mix of eighth and quarter notes.

Measures 45-48. The music continues with a melodic line supported by a rhythmic accompaniment.

Measures 49-52. The music concludes with a piano (*p*) dynamic. The final measure ends with a whole rest.

53

Adagio

57



61



66

Allegro

71



76



81



86



90



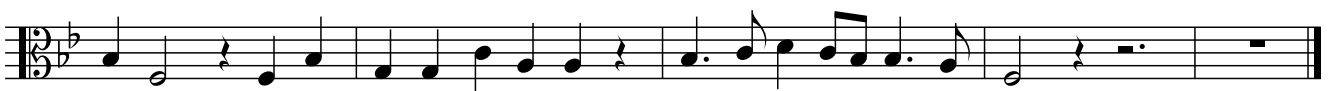
94



99



104



109

[Adagio]