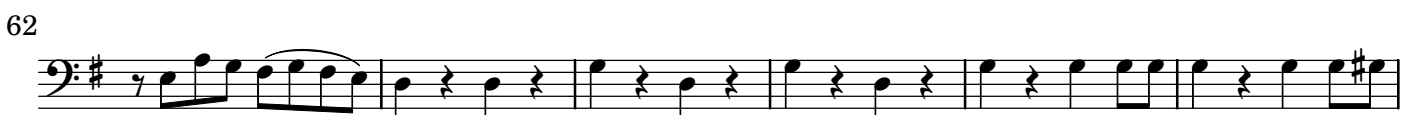
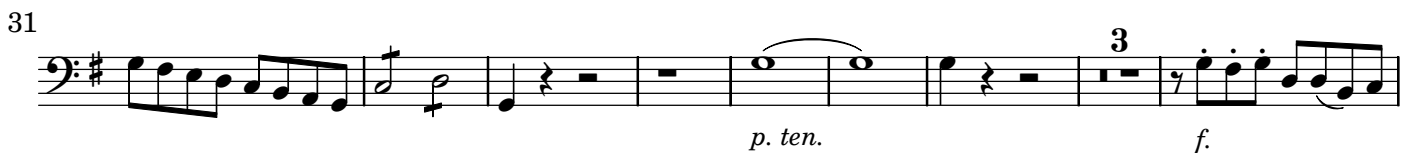


Concerto a due Flauti Traversi [1793]

Basso

D. Cimarosa (1749-1801)

[1.] Allegro



68

75

84

94

100

108

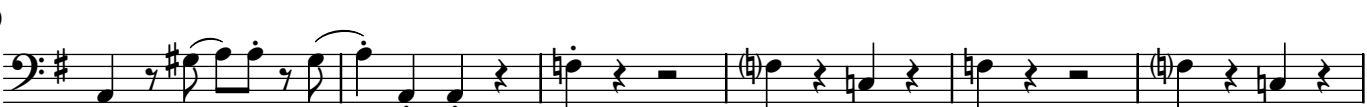
113

119

129

138

144 
p. *f. as.*

149 
p. *p.*

155 
p. ten. *f.*

163 
p.

170 
f. p. *f. p.* *f. p.* *f. p.* *f. p.*

175 
f. p. *f. p.* *f. p.* *f. p.* *f. p.*

180 
cres. *f. as.* *p.*

186 

193 

199



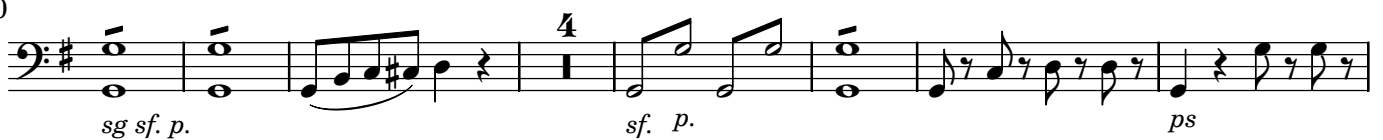
205



212



220



231



237



244



251



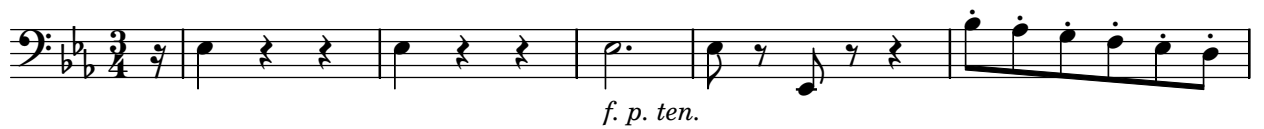
256



262



[2. Largo]

Soli

6



12



17



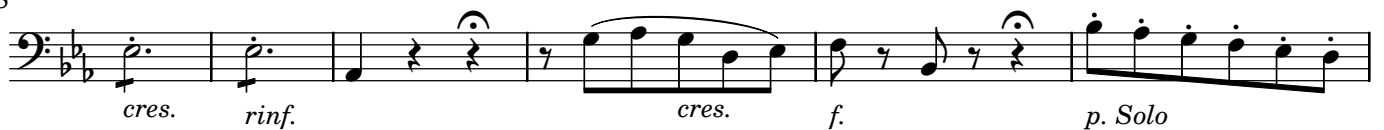
24



31



38



44



49



54



[3.] Allegretto, ma non tanto

Musical score for Bassoon, measures 6-67. The score is in G major and 6/8 time. It features various dynamics including *p.*, *f. as.*, *p.*, *p. as.*, *f.*, *p.*, *f. as.*, *f.*, *f. sempre*, *f.*, *p. e sciolto*, *f.*, and *p. as.*. Measure 32 contains a sextuplet of eighth notes.

72



83



88



101



107



114



119



124



133



138



141

