

V III  
1858  
5

**Musicalisches Tafel-Confect;**

Bestehend in VII. Partnen/

*Balletten, Allemanden, Couranten, Sarabanden, &c.*

Denen Liebhabern zur Belustigung aufgesetzt

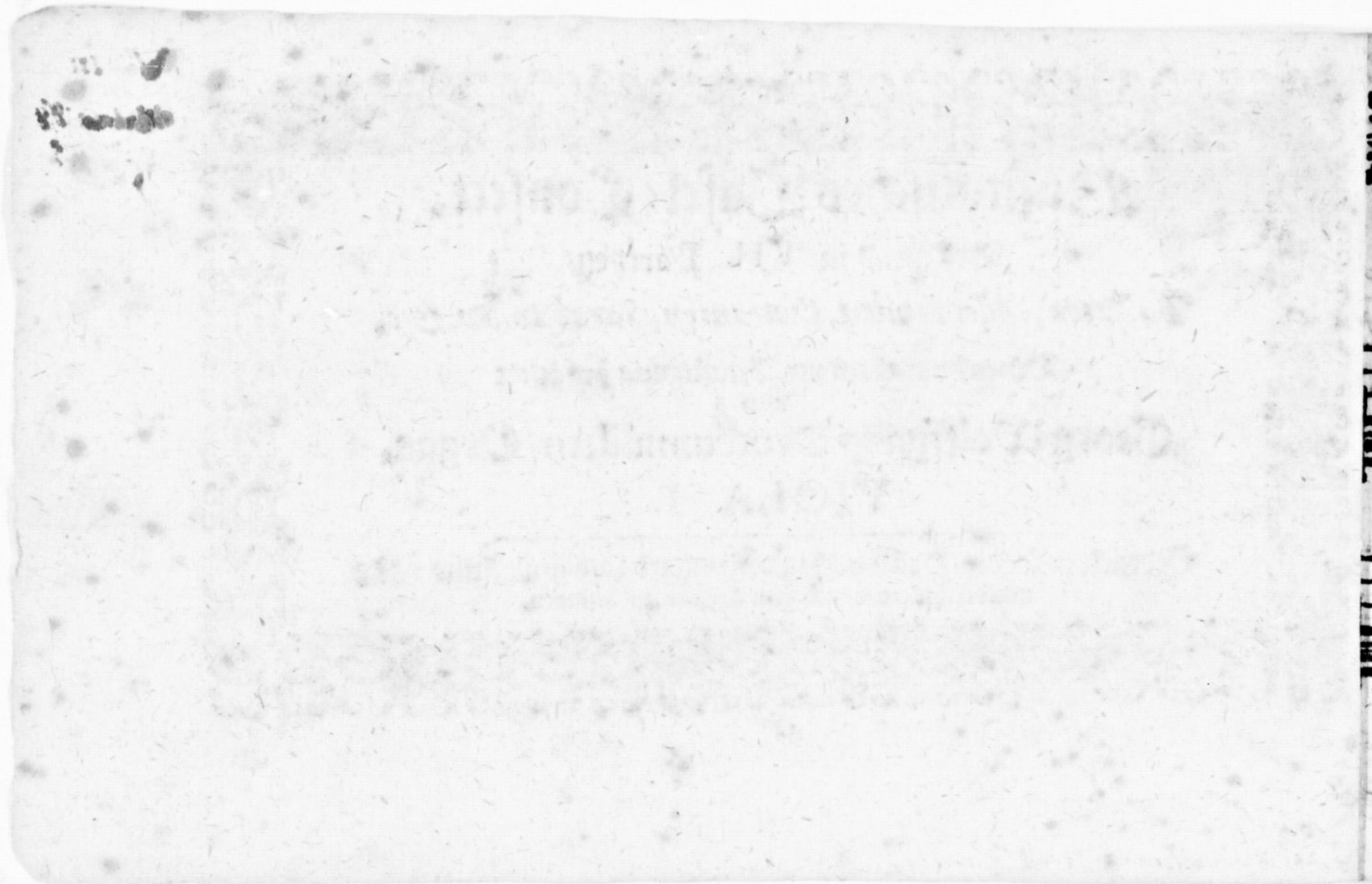
von

**Georg Wolffgang Druckenmüllern / Organ.**

**VIOLA I.**

Bedruckt zu Schw. Hall/ bei Hans. Reinhard Laidigen / Anno 1668.  
und bei ihme/ wie auch dem Autore, zu befinden.

Vm 7. 14. 80





# VIOLA I.

I.

First musical staff containing notes, rests, and a fermata. The staff begins with a treble clef, a common time signature (C), and a key signature of one sharp (F#). The notation includes quarter notes, eighth notes, and a fermata over a final note.

I. BALLET.

Second musical staff containing notes and rests. The staff begins with a treble clef, a common time signature (C), and a key signature of one sharp (F#). The notation includes quarter notes, eighth notes, and a fermata over a final note.

Aaaa 2

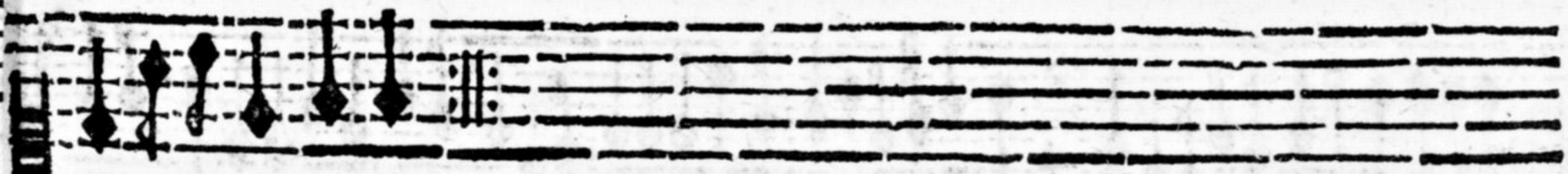
Handwritten musical notation on a five-line staff. The notation includes a treble clef, a common time signature (C), and a key signature of one flat (B-flat). The music consists of a sequence of notes, including quarter notes, eighth notes, and dotted notes, with some notes beamed together. A double bar line is present near the end of the staff. The number "2." is written below the staff.

Handwritten musical notation on a five-line staff. The notation includes a treble clef and a 3/4 time signature. The music consists of a sequence of notes, including quarter notes, eighth notes, and dotted notes, with some notes beamed together. A double bar line is present near the end of the staff.

Handwritten musical notation on a five-line staff. The notation includes a treble clef and a 3/4 time signature. The music consists of a sequence of notes, including quarter notes, eighth notes, and dotted notes, with some notes beamed together. A double bar line is present near the end of the staff.



3.



Aaa 3

Handwritten musical notation on a five-line staff. It features a treble clef, a common time signature (C), and a 3/4 time signature. The notation includes various note values such as quarter, eighth, and sixteenth notes, along with rests and bar lines. There are some markings above the staff, possibly indicating fingerings or ornaments.

Handwritten musical notation on a five-line staff. It features a treble clef, a common time signature (C), and a 1/4 time signature. The notation includes various note values such as quarter, eighth, and sixteenth notes, along with rests and bar lines. There are some markings above the staff, possibly indicating fingerings or ornaments.

Handwritten musical notation on a five-line staff. It features a treble clef, a common time signature (C), and a 3/4 time signature. The notation includes various note values such as quarter, eighth, and sixteenth notes, along with rests and bar lines. There are some markings above the staff, possibly indicating fingerings or ornaments.

5. Lam. *subm.* *f.* *subm.*

*f.* *subm.* *f.*

*subm.* Aaaa 4

Handwritten musical notation for exercise 6, marked "Viv." (Vivace). The notation is on a five-line staff with a treble clef. It begins with a common time signature (C) and a 3/4 time signature. The music consists of a series of eighth and sixteenth notes, with some rests and a final double bar line.

6. Viv.

Handwritten musical notation for exercise 7, marked "Tard." (Tardito). The notation is on a five-line staff with a treble clef. It begins with a common time signature (C) and a 3/4 time signature. The music consists of a series of eighth and sixteenth notes, with some rests and a final double bar line.

7. Tard.

Handwritten musical notation for exercise 8, marked "subm." (subito). The notation is on a five-line staff with a treble clef. It begins with a common time signature (C) and a 3/4 time signature. The music consists of a series of eighth and sixteenth notes, with some rests and a final double bar line.

subm.



8. Aria.

Aaa a 5

6. Cour.

This musical system consists of two staves. The upper staff is a treble clef with a 3/4 time signature. The lower staff is a bass clef with a 4/4 time signature. The music is written in a style where notes are represented by diamond-shaped heads with stems, and rests are indicated by 'x' marks on the staff lines. The piece concludes with a double bar line and repeat dots.

This musical system consists of two staves. The upper staff is a treble clef and the lower staff is a bass clef. The notation continues with diamond-shaped notes and stems, ending with a double bar line and repeat dots.

10. Sarab.

This musical system consists of two staves. The upper staff is a treble clef with a 3/4 time signature. The lower staff is a bass clef with a 4/4 time signature. The notation continues with diamond-shaped notes and stems, ending with a double bar line and repeat dots.

VII.

à s.

The first staff of music features a treble clef, a common time signature (C), and a key signature of one flat (B-flat). It contains a sequence of notes including quarter, eighth, and sixteenth notes, with some notes beamed together. There are three asterisks (\*) on the left side of the staff, and a double bar line with repeat dots is located near the end of the staff.

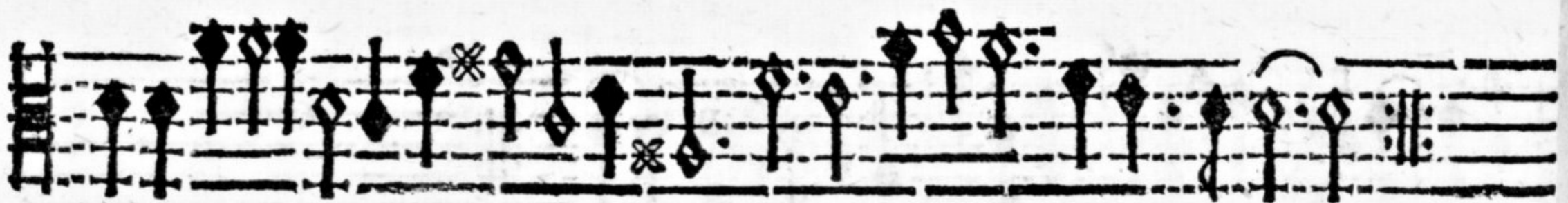
1. Allegro.

The second staff of music continues the piece with similar notation, including quarter and eighth notes. It features a double bar line with repeat dots in the middle of the staff.

The third staff of music concludes the piece with a final sequence of notes and a double bar line with repeat dots.

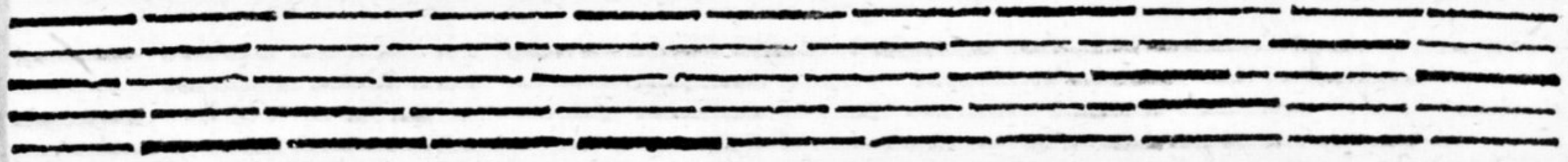


2. Courant.



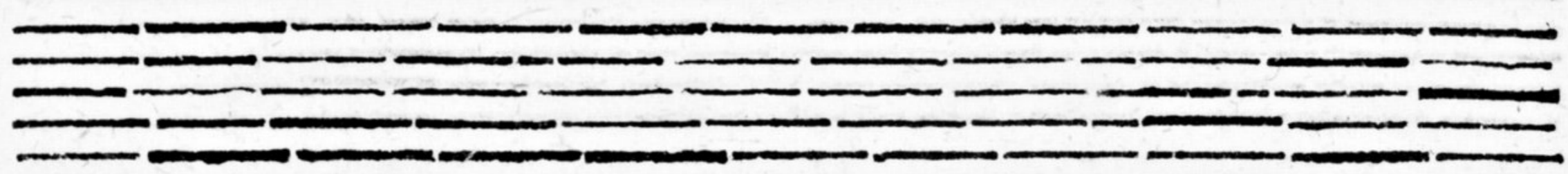


3. Ballo.



4. Sarab. 







5. Chique.



V.

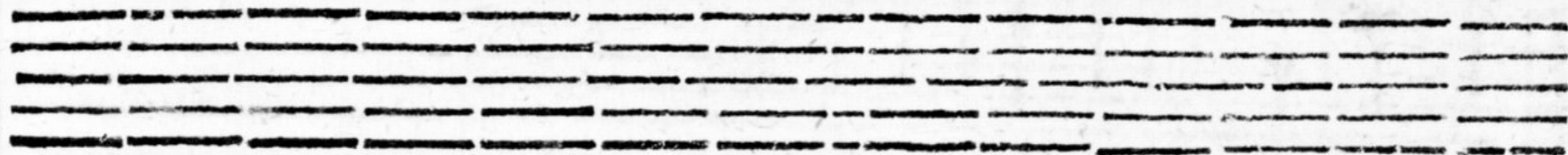
à 4.



1. Allem.





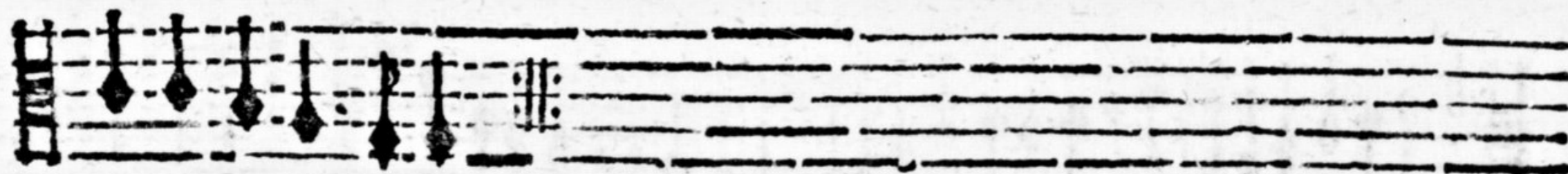


Bbbb

2. Cour.



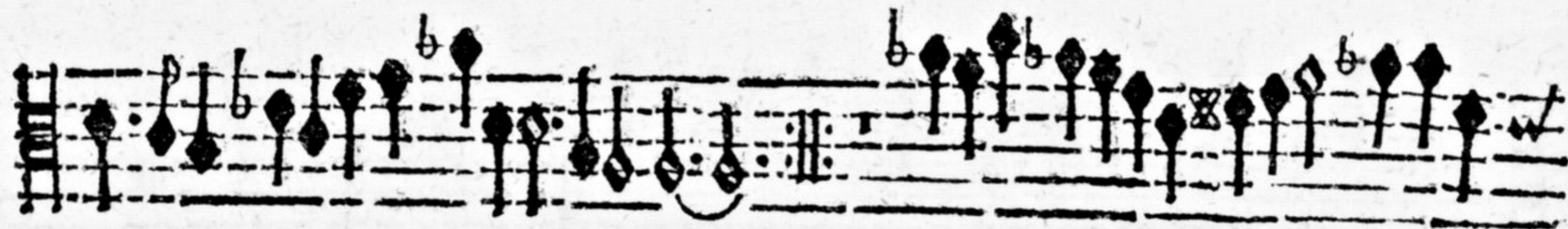
3. Sarab.



Bbbb 2



4. Chique.



VI.

à s.



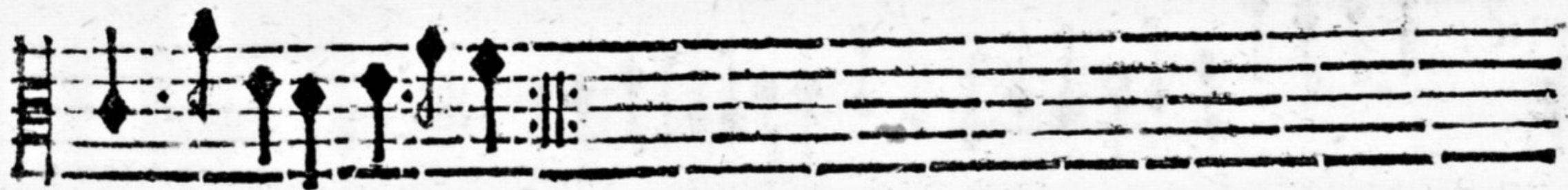
1. Brandle.



Bbbb 3



2. Gay.





3. Amener.



Bbbb 4



4. Montir.





Double,

Bbbb ♯

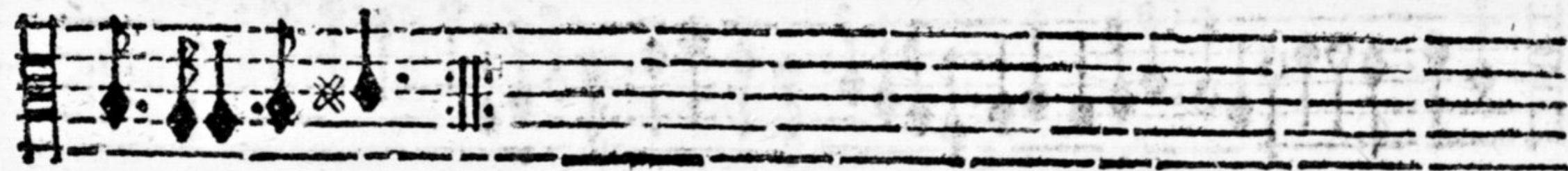
VII.

à 4.



1. Allegro.





2. Cour.

The first system of handwritten musical notation is written on two staves. The top staff begins with a treble clef and a 3/4 time signature. The first measure contains a 4-measure rest. The subsequent measures contain various note values, including quarter notes, eighth notes, and sixteenth notes, with some notes beamed together. The bottom staff continues the notation with similar note values and rests.

The second system of handwritten musical notation consists of two staves. It continues the piece with various note values and rests, including a double bar line with repeat dots in the middle of the system.

The third system of handwritten musical notation consists of two staves. It continues the piece with various note values and rests, including a double bar line with repeat dots at the end of the system.



3. Sarab.





4. Chique.

