

*Sonata Violino Solo.*

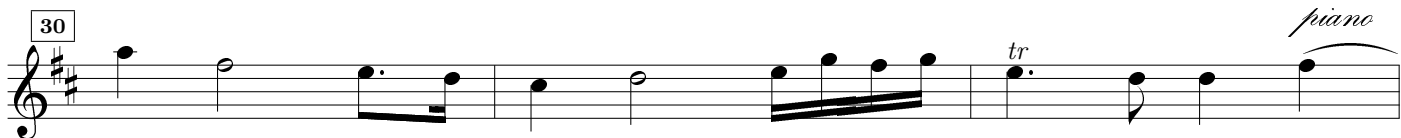
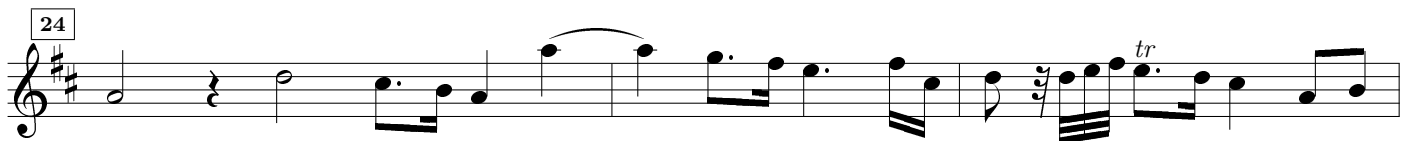
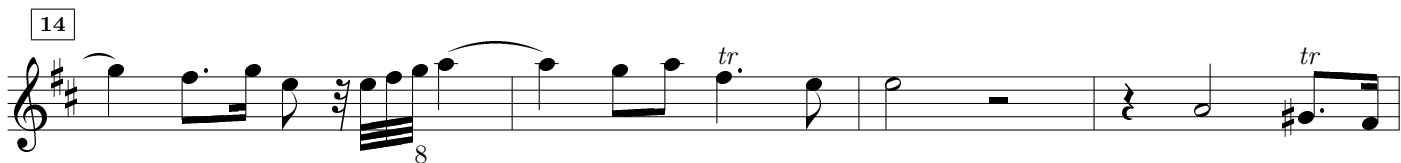
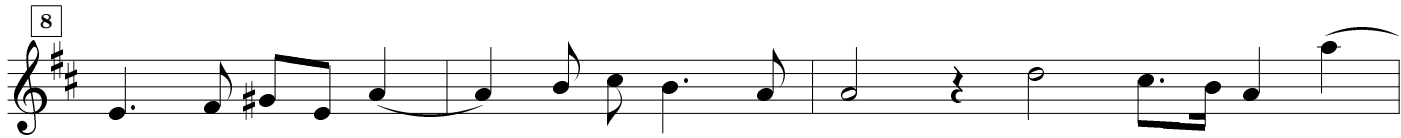
*G. Muffat*

*Praga July*

*1677.*

# Sonata Violino Solo.

*Adagio*



36

38

40

43

46

49

51

53

56

58

60

The image displays a musical score for a piece in G major, consisting of 11 staves of music. The key signature is one sharp (F#), and the time signature is 4/4. The score begins at measure 65 and ends at measure 91. The music is characterized by a steady eighth-note accompaniment in the left hand and a more melodic line in the right hand. The melody features various rhythmic patterns, including eighth-note runs and quarter-note phrases. The piece concludes with a final cadence in G major.

93

96 *Adagio*

99

102

104

107

110

113

116

120

124

127

130 *tr* *Allegro*

133

136

139

142

144

146

149

151 *piano*

154

156

158

160

162 *piano* *forte*

164 *piano* *forte* *piano*

166 *forte*

168

170 *tr.* *tr.*

174 *Adagio* *tr.*

178

182

186 *tr.*

189

192 *piano* *tr.*

*G. Muffat Praga July 1677* *Finis*