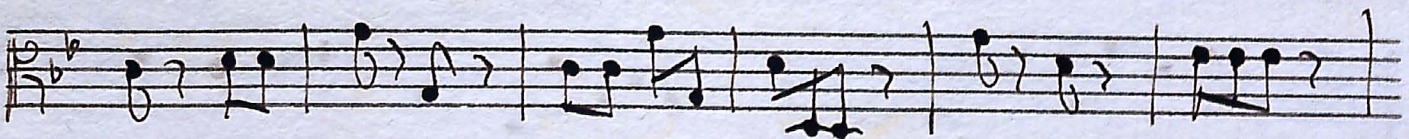
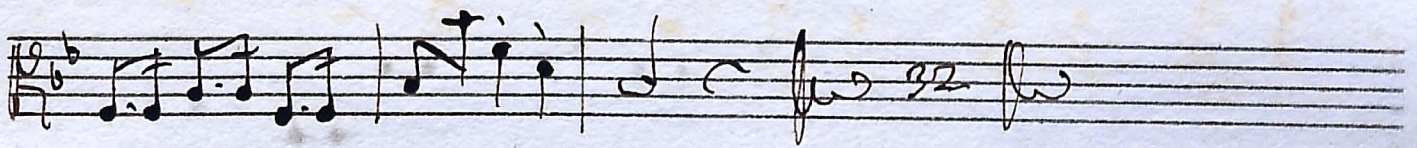
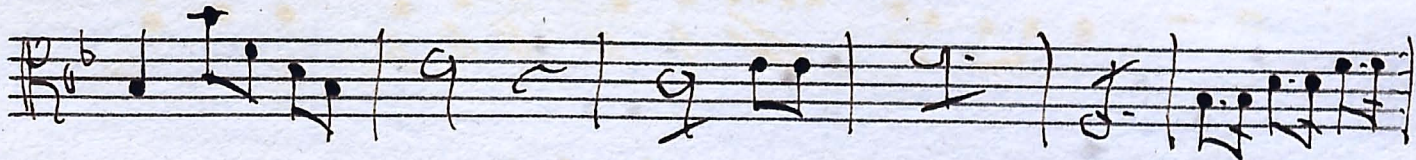
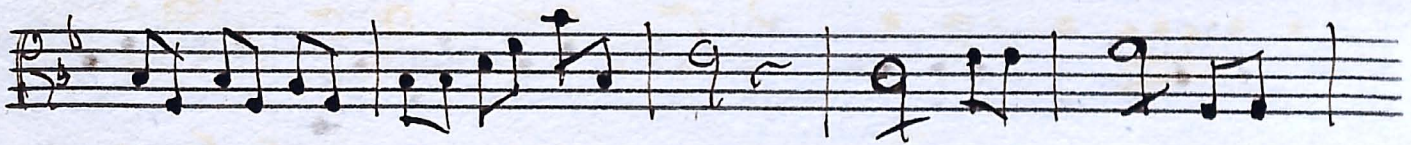
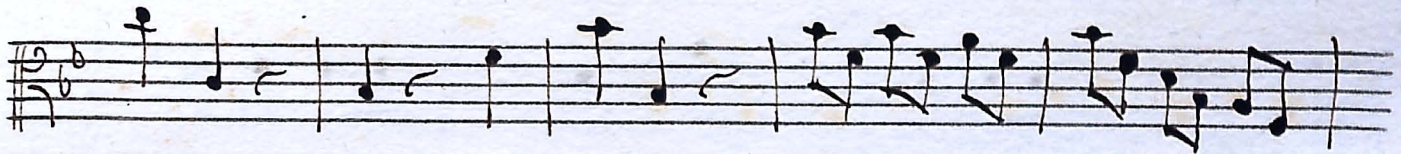
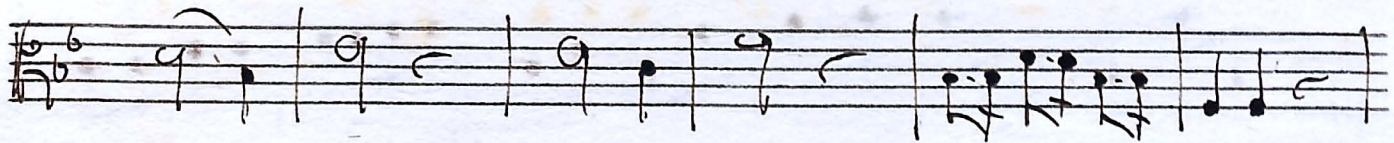


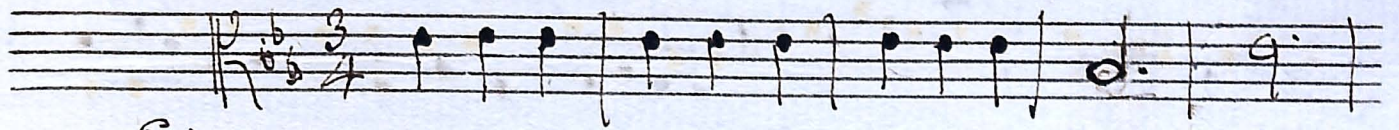
Valve. a 3. voci, con Stru!

Viola Prima. 1



Volpe

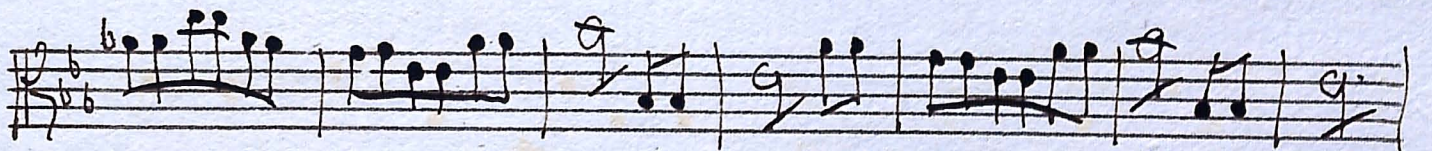
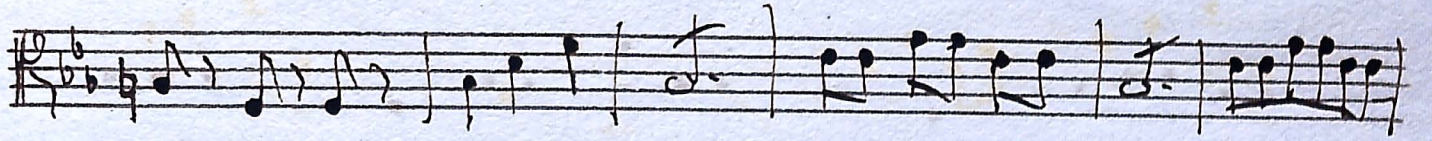
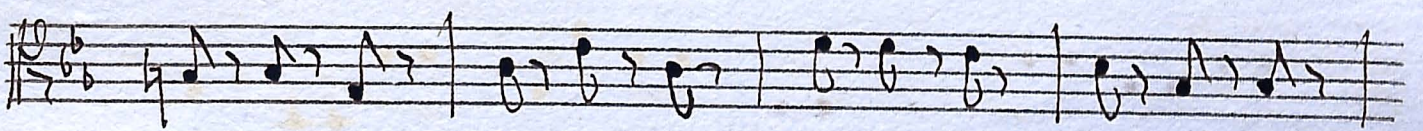
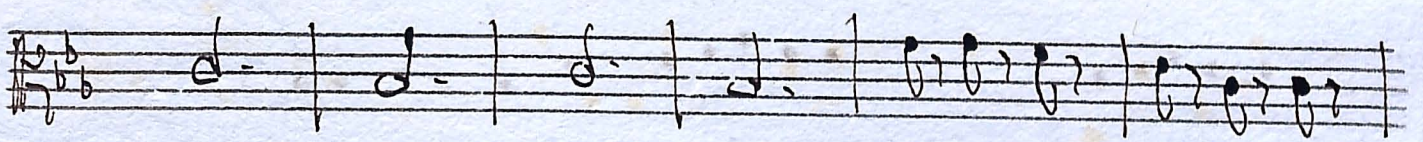
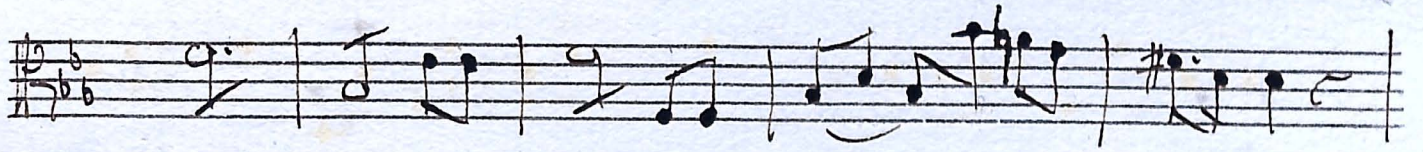
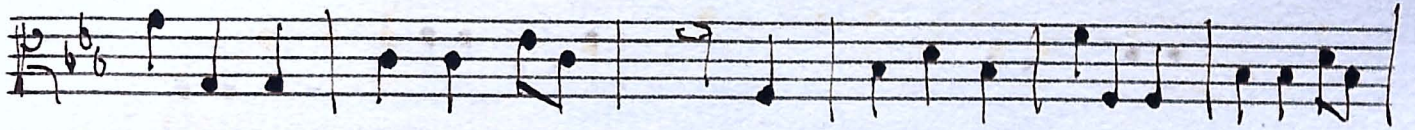
A handwritten musical score consisting of ten staves. The notation is written in black ink on aged, slightly yellowed paper. Each staff begins with a treble clef and a key signature of two flats (B-flat and E-flat). The music is written in a style that appears to be a single melodic line, possibly for a flute or violin. The notation includes various note values (quarter, eighth, and sixteenth notes), rests, and accidentals (sharps and flats). The first staff contains a sequence of eighth notes. The second staff features a mix of eighth and quarter notes. The third staff has a quarter note followed by eighth notes and a final measure with a quarter rest. The fourth staff starts with a quarter rest followed by eighth notes. The fifth staff contains a sequence of eighth notes with a sharp sign. The sixth staff begins with a quarter rest followed by eighth notes. The seventh staff starts with a quarter note followed by eighth notes. The eighth staff begins with a quarter note followed by eighth notes. The ninth staff starts with a quarter note followed by eighth notes. The tenth staff begins with a quarter note followed by eighth notes and ends with a double bar line and a repeat sign.



Eia ergo.



mo



Volterris

Largo. $\frac{3}{4}$ Clemens.

Laud Deo.