

Sonate für Oboe, Baritonoboe und Basso continuo F-Dur

Baritonoboe

Bearbeitung der Sonate op.1 Nr.2

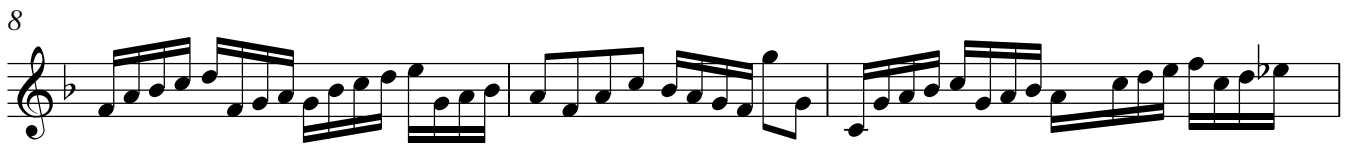
Gottfried Finger

Adagio



Allegro

p



p

Adagio

solo

4

Allegro

8

10

12

14

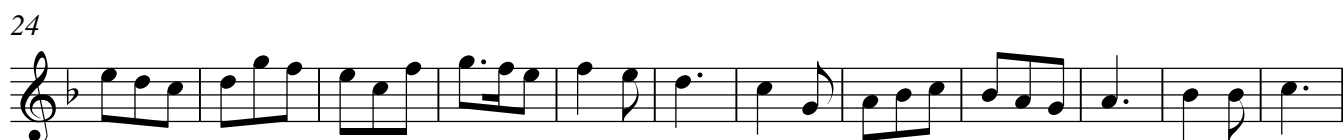
17

24

31

Allegro **Adagio**

4 6 4 7

Adagio*p***Allegro***p***Adagio**