

Mus. Pr. 2

266

Franc. Bühler

Missa Brevis
in F.

Opus XXIII

Cornu II.

0037792

Handwritten text, possibly a name or title, in cursive script.

266

90
L

Bankler

CORNU II in F.

Adagio.

K $\frac{2}{4}$

- yrie.

All.

G $\frac{2}{4}$

- loria.

The first section consists of five staves of musical notation. The top staff is a vocal line with a treble clef and a common time signature. The lower four staves are for a keyboard instrument, with the right hand on the top two staves and the left hand on the bottom two. The music features various rhythmic patterns, including eighth and sixteenth notes, and rests. There are some performance markings such as accents and slurs.

Andante.

The second section, marked *Andante.*, begins with the word "redo." on the first staff. It consists of ten staves of musical notation. The notation includes various rhythmic values and rests. There are several performance markings, including slurs, accents, and dynamic markings like *p* (piano). The section concludes with the instruction "piu moto." (more motion) on the eighth staff. The notation is dense and includes many sixteenth and thirty-second notes.



Andante.



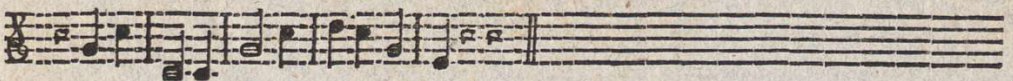
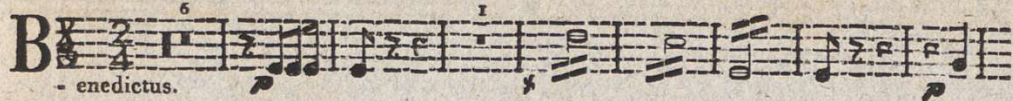
Allò.



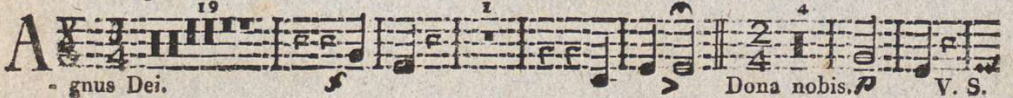
Pleni. *f*



Andante.



Larghetto.



Poco Andante.

Dona nobis. *p* V. S.

The image shows a page of handwritten musical notation on five staves. The notation is in a historical style, likely from the 18th or 19th century. The first four staves contain musical notation with various notes, rests, and dynamic markings such as *f* and *ff*. The fifth staff is empty. Below the staves is a decorative horizontal line with a central flourish.