



(URFILM 47/1976 Nr 790-80)  
**Sächsische Landesbibliothek in Dresden**

URFILM 5/19 92 Nr 80 = 10 Aufn.  
 Handschrift Nr 1/11 2358  
E/18

Die Benutzung dieser Handschrift ist nur unter der Bedingung gestattet, daß der Entleiher der hiesigen Bibliothek ein Stück seiner auf die Handschrift bezüglichen Veröffentlichung geschenkwise überläßt, sofern die Bibliotheksverwaltung nicht ausdrücklich auf die Überlassung verzichtet. Zum Durchzeichnen oder zur Herstellung von Lichtbildern ist besondere Erlaubnis einzuholen.

Belehrende Auskünfte oder Hinweise auf Veröffentlichungen über diese Handschrift, die der Bibliothek noch unbekannt sind, werden dankbar entgegengenommen.

**Benutzer der Handschrift seit 1959**

Datum	Name, Stand und Wohnung des Benutzers	Ort der Benutzung	Art der Benutzung (nur eingesehen?, ganz od. teilw. abgeschrieben?, ganz oder teilweise verglichen?)	Zweck der Benutzung (Ist Veröffentlichung beabsichtigt und in welcher Form?)
2.2. 20.9.76	Mania Maassen Prof. R. Walthes Heidelberg	Dresden "	Mikrofilm "	
7.6.86 9.12.92 7.98	J. Staudt Thom J. Staudt	Dresden "	eingesehen	
15.11.2000	G. Popp J. Staudt	"	"	
30.9.03 15/2/11	S. Kiernan	"	"	

N<sup>o</sup> 1

Regina Cechi  
at  
C. A. B.  
Wichin an Wiche

J. J. E.

1076



Mus. 2358 E-18

1

2

Respona a 5  
A. T. Bach  
ad libitum

Soprano 1  
Musical notation on a five-line staff with a treble clef and a common time signature (C). The notes are handwritten in ink.

Soprano 2  
Musical notation on a five-line staff with a treble clef and a common time signature (C). The notes are handwritten in ink.

Musical notation on a five-line staff with a treble clef and a common time signature (C). The notes are handwritten in ink.

Musical notation on a five-line staff with a treble clef and a common time signature (C). The notes are handwritten in ink.

Musical notation on a five-line staff with a treble clef and a common time signature (C). The notes are handwritten in ink.

Musical notation on a five-line staff with a treble clef and a common time signature (C). The notes are handwritten in ink.

Musical notation on a five-line staff with a treble clef and a common time signature (C). The notes are handwritten in ink.

Musical notation on a five-line staff with a treble clef and a common time signature (C). The notes are handwritten in ink.

Musical notation on a five-line staff with a treble clef and a common time signature (C). The notes are handwritten in ink.

Musical notation on a five-line staff with a treble clef and a common time signature (C). The notes are handwritten in ink.

Musical notation on a five-line staff with a treble clef and a common time signature (C). The notes are handwritten in ink.

Handwritten musical notation on two staves. The lyrics are: *Sanctus Spiritus qui procedit a Patre et Filio*

Handwritten musical notation on two staves. The lyrics are: *et ex Patre et Filio simul procedit et seorsum cum Patre et Filio*

Handwritten musical notation on two staves. The lyrics are: *conspirit et coequalis Patri et Filio et simul adoratur et conglorificatur*

Handwritten musical notation on two staves. The lyrics are: *quod loquitur in conspectu Patris et Filii et seorsum cum Patre et Filio*

Handwritten musical notation on two staves. The lyrics are: *et seorsum cum Patre et Filio adoratur et conglorificatur*

Handwritten musical notation on two staves. The lyrics are: *et seorsum cum Patre et Filio adoratur et conglorificatur*

T.

Mus.

alle giugando in tre volte

alle sua alle la ga la tre ho tre

Il primo Coeli ho tre

Il primo Coeli ho tre

Il primo Coeli ho tre

Il primo Coeli ho tre

Il primo Coeli ho tre

Il primo Coeli ho tre

*Adu.*

Handwritten musical notation on two staves. The first staff contains the lyrics: "Omnipotens Deus omnia creavit". The second staff contains the lyrics: "omnia sustinet omnia regit".

Handwritten musical notation on multiple staves. The lyrics include: "In spiritu sancto", "In spiritu sancto", "In spiritu sancto", "In spiritu sancto". Performance markings include "pizz.", "pizz.", and "8va = tub.". The notation is dense and includes various musical symbols and clefs.



Sol:

allegro in modo alla breve ja la la re  
 alla ma alla bre la la re

9 8 3 6 Regim Calitum Regim Calitum re  
 1 #

re la la re re

re la la re re re la la re re

la la re re Regim Calitum

la la re re Regim Calitum

Regim Calitum re Regim Calitum

Regim Calitum re Regim Calitum  
 pmo. pia: tuba

Handwritten musical notation on two staves. The first staff includes the lyrics "la face de son" and "Ruyson ches la tie". The second staff includes the lyrics "se alle" and "se alle".

Handwritten musical notation on two staves. The first staff includes the lyrics "la face" and "se plus". The second staff includes the lyrics "se plus".

Handwritten musical notation on two staves. The first staff includes the lyrics "se plus". The second staff includes the lyrics "se plus" and "se plus".

Handwritten musical notation on two staves. The first staff includes the lyrics "Ruyson ches la tie". The second staff includes the lyrics "la tie".

Handwritten musical notation on two staves. The first staff includes the lyrics "se plus" and "se plus". The second staff includes the lyrics "se plus" and "se plus".

luja alla *molto* *molto* *molto* *molto*

*molto* *molto* *molto* *molto*

*molto* *molto* *molto* *molto*

*molto* *molto* *molto* *molto*

*molto* *molto* *molto* *molto*

*molto* *molto* *molto* *molto*

*molto* *molto* *molto* *molto*

*molto* *molto* *molto* *molto*

*molto* *molto* *molto* *molto*

*molto* *molto* *molto* *molto*

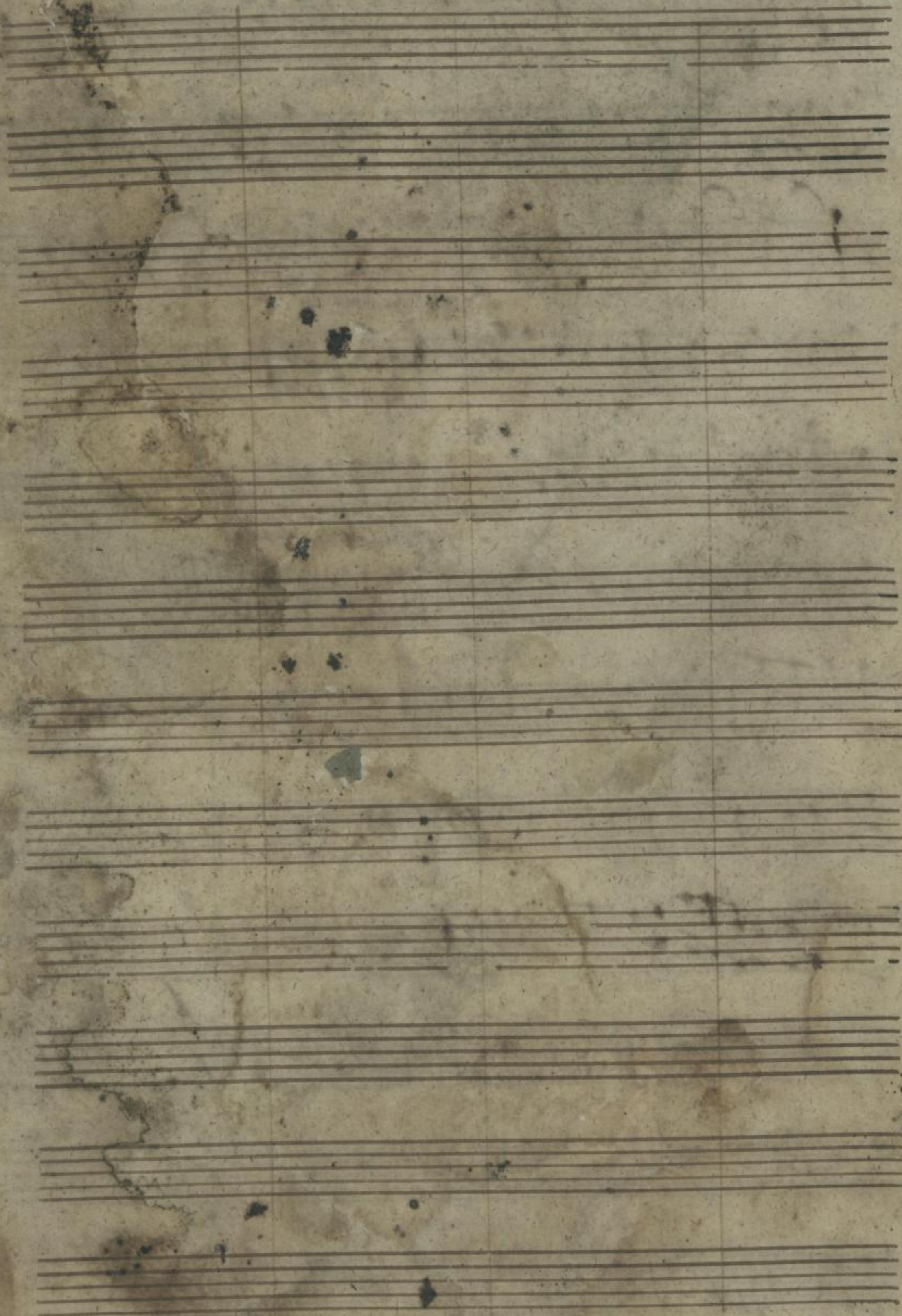
*molto* *molto* *molto* *molto*

*molto* *molto* *molto* *molto*

*molto* *molto* *molto* *molto*

$\frac{2}{3}$

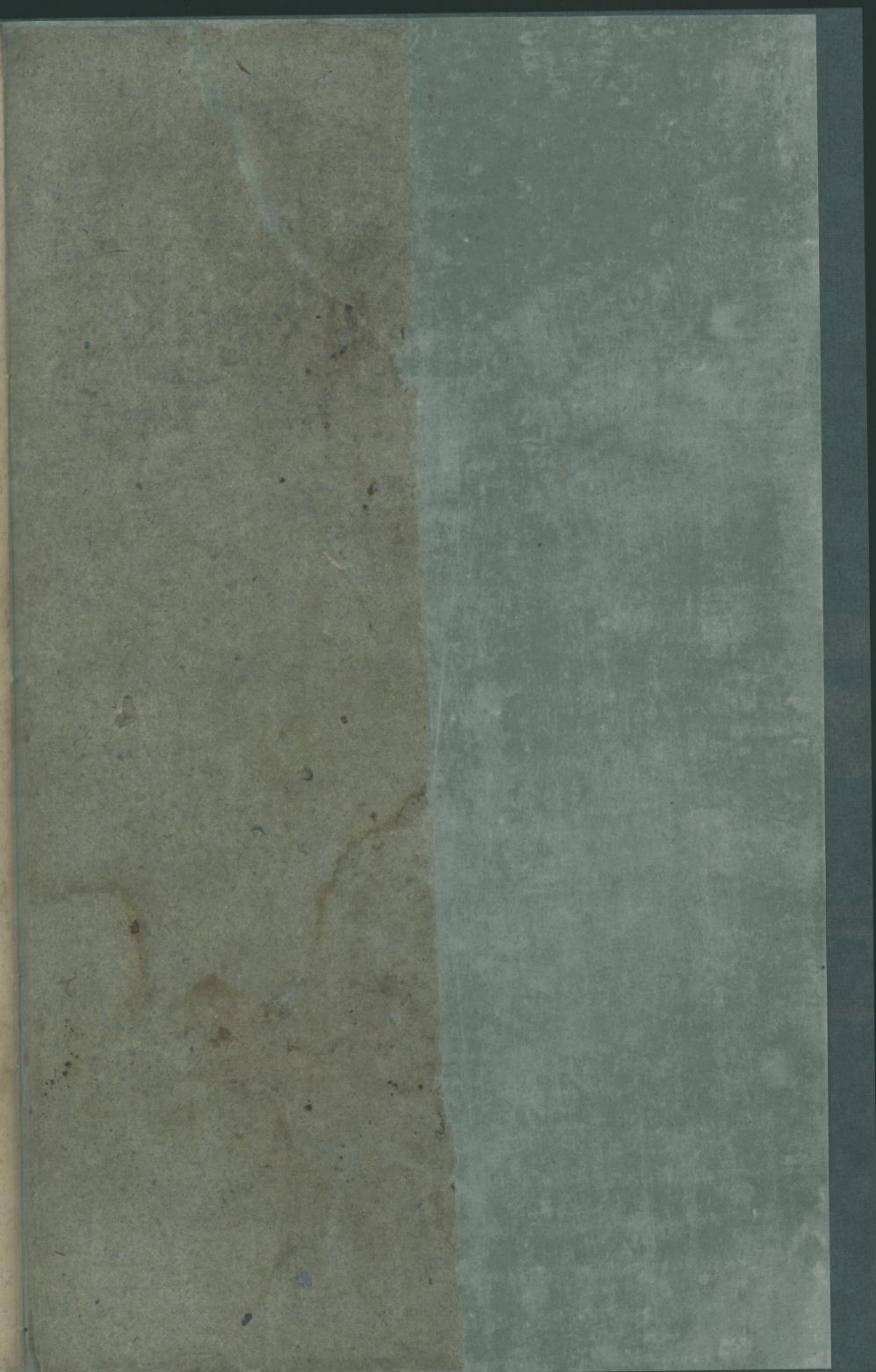
*molto*  $\frac{2}{3}$



(Orig. 241)

Sächs. Landesbibliothek  
Dresden u. der  
Kgl. Hofkirche

3352  
E 18.





10.03.1992

I. A (1.2.4.6.8.9)

B (1.2.4.6)

II. A (1a [ $\beta$ ])(2a [ $\alpha.\beta$ ])

(3a [ $\alpha$ ])

