

IN INVOCATURA
ZUR
VIOLA di GAMBA

bestehend in
Entraten, Allemanden, Correnten, Saraban-
den und Capriccien

Allen dieses Instruments Liebhabern zur Übung
und Ergötzlichkeit aufgesetzt und herausgegeben,

Von
Johann Christoff Zieglern,
Acad. Witteb. Mus. Direct. et Org.

I.^o

Accord. *Andante*

II.

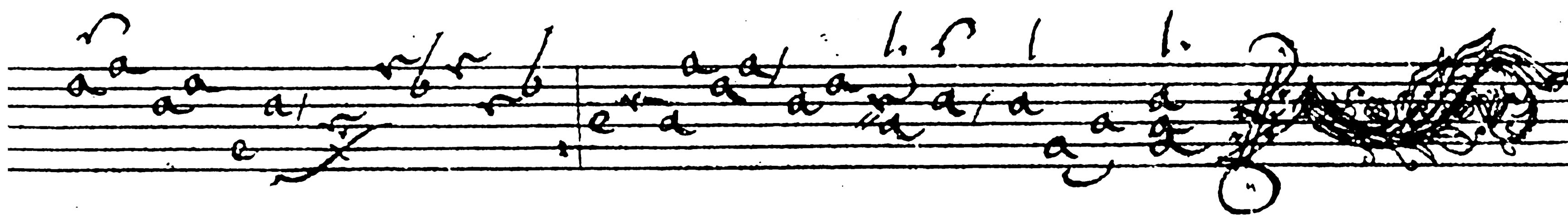
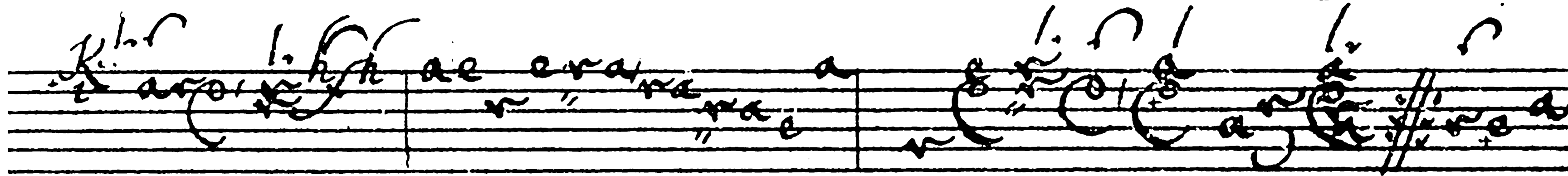
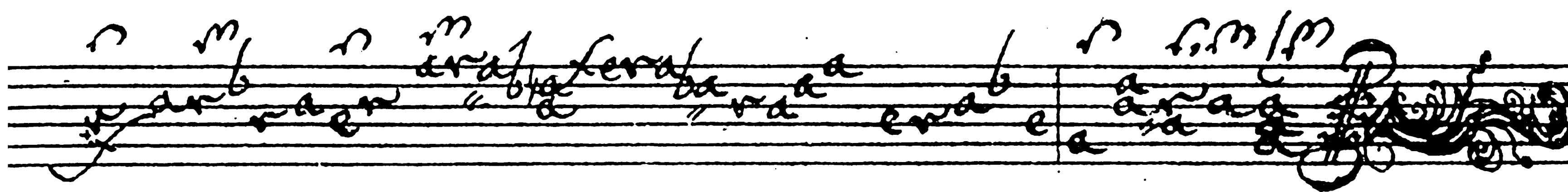
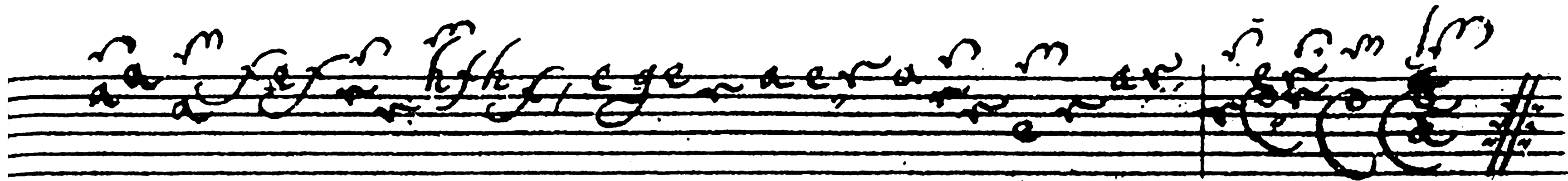
Allegretto

Handwritten musical notation for the second section. The top staff begins with a treble clef and contains notes with various ornaments and slurs. The bottom staff continues the melody with similar notation. The notes are written in a cursive, handwritten style.

III.

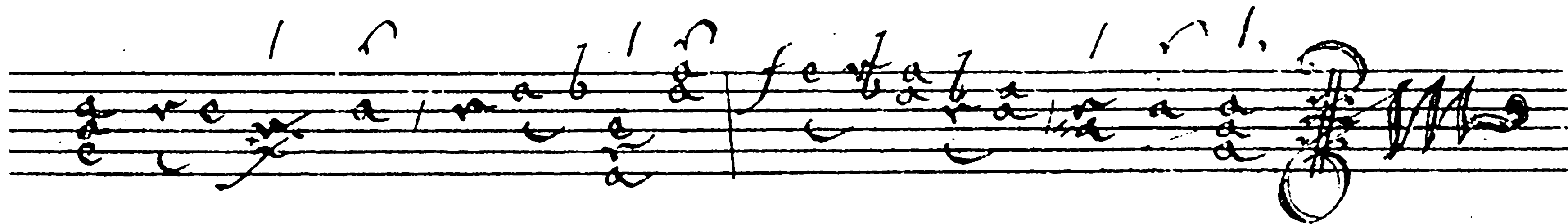
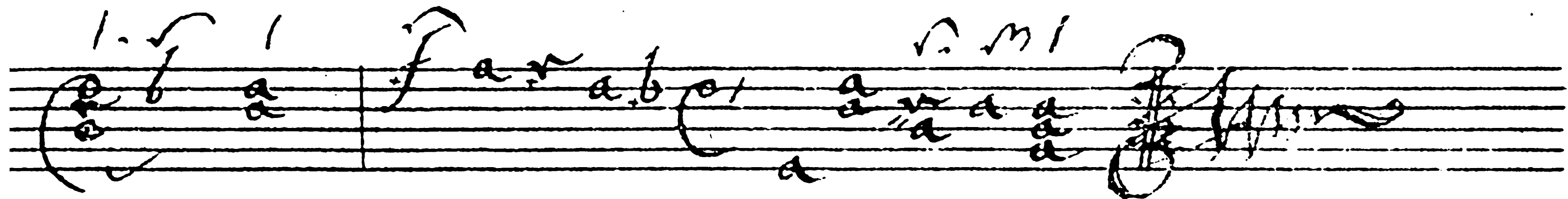
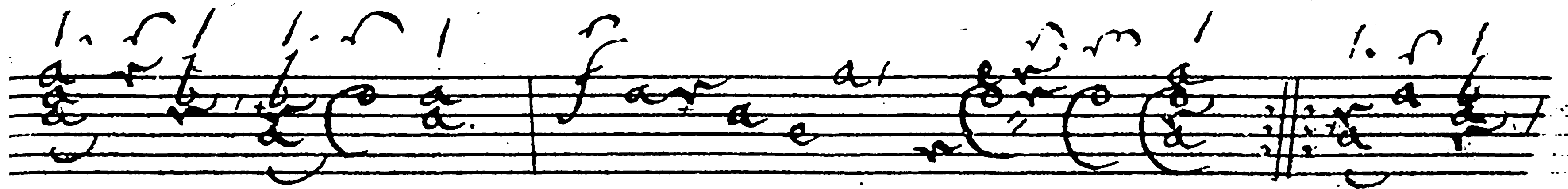
Corrente

Handwritten musical notation for the third section. The top staff begins with a treble clef and contains notes with various ornaments and slurs. The bottom staff continues the melody with similar notation. The notes are written in a cursive, handwritten style.



mer
IV.

Sarabanda



VI.

L'accordo

Handwritten musical notation for the first system, featuring a treble clef, a key signature of one flat, and a common time signature. The notation is highly stylized and includes various ornaments and slurs.

Handwritten musical notation for the second system, continuing the style of the first system with a treble clef and common time signature.

VII.

Handwritten musical notation for the third system, featuring a treble clef, a key signature of one flat, and a common time signature. The notation is highly stylized and includes various ornaments and slurs.

Handwritten musical notation for the fourth system, featuring a treble clef, a key signature of one flat, and a common time signature. The notation is highly stylized and includes various ornaments and slurs.

Handwritten musical notation on a five-line staff. The notation includes various note heads, stems, and beams, with some notes marked with a '1.' above them. The staff concludes with a double bar line and a key signature change to two sharps (F# and C#).

Handwritten musical notation on a five-line staff. The notation includes various note heads, stems, and beams, with some notes marked with a '1.' above them. The staff concludes with a double bar line and a key signature change to two sharps (F# and C#).

Handwritten musical notation on a five-line staff. The notation includes various note heads, stems, and beams, with some notes marked with a '1.' above them. The staff concludes with a double bar line and a key signature change to two sharps (F# and C#).

Handwritten musical notation on a five-line staff. The notation includes various note heads, stems, and beams, with some notes marked with a '1.' above them. The staff concludes with a double bar line and a key signature change to two sharps (F# and C#).

XII

Demanda

era a b a n a

XIII

Crede

era a b a n a

Handwritten musical notation on a five-line staff. The lyrics "aurea vera aurea vera" are written below the notes. The notation includes various note values, rests, and a double bar line. The piece concludes with a double bar line and a sharp sign.

Handwritten musical notation on a five-line staff. The lyrics "aurea vera aurea vera" are written below the notes. The notation includes various note values, rests, and a double bar line. The piece concludes with a double bar line and a sharp sign.

Handwritten musical notation on a five-line staff. The lyrics "aurea vera aurea vera" are written below the notes. The notation includes various note values, rests, and a double bar line. The piece concludes with a double bar line and a sharp sign.

Handwritten musical notation on a five-line staff. The lyrics "aurea vera aurea vera" are written below the notes. The notation includes various note values, rests, and a double bar line. The piece concludes with a double bar line and a sharp sign.

XIV

Sarabanda

1. m |

XV

Apriccio

Lacertos

XVI.

Handwritten musical notation for the first system of XVI. The staff contains several measures of music with notes and rests. The word "Lacertos" is written above the first measure.

Enbrida

Handwritten musical notation for the second system of XVI. The staff contains several measures of music with notes and rests.

XVII.

Handwritten musical notation for the first system of XVII. The staff contains several measures of music with notes and rests. The word "Lemina" is written above the first measure.

Lemina

Handwritten musical notation for the second system of XVII. The staff contains several measures of music with notes and rests.

Handwritten musical notation on a five-line staff. The notation is dense and includes various note heads, stems, and beams. There are some markings above the staff that look like 'm' or 'n'.

Handwritten musical notation on a five-line staff. The notation is dense and includes various note heads, stems, and beams. There are some markings above the staff that look like 'm' or 'n'.

Handwritten musical notation on a five-line staff. The notation is dense and includes various note heads, stems, and beams. There are some markings above the staff that look like 'm' or 'n'.

Handwritten musical notation on a five-line staff. The notation is dense and includes various note heads, stems, and beams. There are some markings above the staff that look like 'm' or 'n'.

XVIII.

Coronata

XIX.

Sabatina

Handwritten musical notation on a five-line staff. The notes are written in a cursive style with the letter 'a' above them. Above the staff, there are some markings that look like 'l. n l l'. The staff ends with a double bar line and a key signature of two flats.

Handwritten musical notation on a five-line staff. The notes are written in a cursive style with the letter 'a' above them. Above the staff, there are some markings that look like 'l. n l l'. The staff ends with a double bar line and a key signature of two flats.

Handwritten musical notation on a five-line staff. The notes are written in a cursive style with the letter 'a' above them. Above the staff, there are some markings that look like 'l. n l l'. The staff ends with a double bar line and a key signature of two flats.

Handwritten musical notation on a five-line staff. The notes are written in a cursive style with the letter 'a' above them. Above the staff, there are some markings that look like 'l. n l l'. The staff ends with a double bar line and a key signature of two flats.

XX

Cantata

Cantata

XXI

Cantata

Cantata

Handwritten musical notation on a five-line staff. The notes are written in a cursive, handwritten style. Above the notes, there are several vertical lines and the number '1' repeated, possibly indicating a first ending or a specific measure. The notation includes various note values and rests.

Handwritten musical notation on a five-line staff. The notes are written in a cursive, handwritten style. Above the notes, there are several vertical lines and the number '1' repeated, possibly indicating a first ending or a specific measure. The notation includes various note values and rests.

Handwritten musical notation on a five-line staff. The notes are written in a cursive, handwritten style. Above the notes, there are several vertical lines and the number '1' repeated, possibly indicating a first ending or a specific measure. The notation includes various note values and rests.

Handwritten musical notation on a five-line staff. The notes are written in a cursive, handwritten style. Above the notes, there are several vertical lines and the number '1' repeated, possibly indicating a first ending or a specific measure. The notation includes various note values and rests.

XXII

Allegretto

a a a a a a a a a a

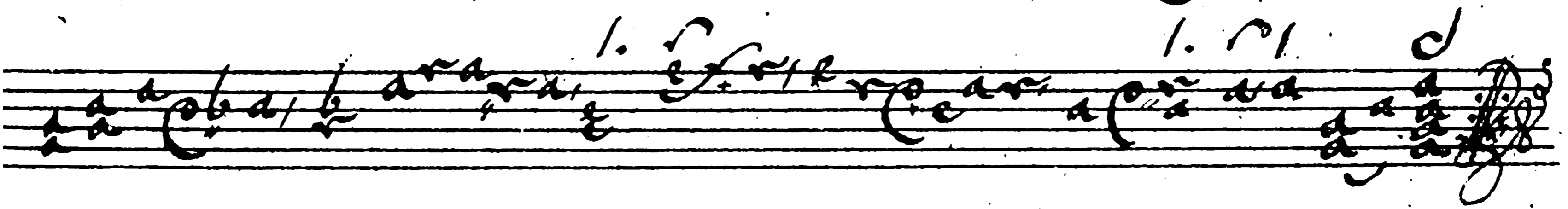
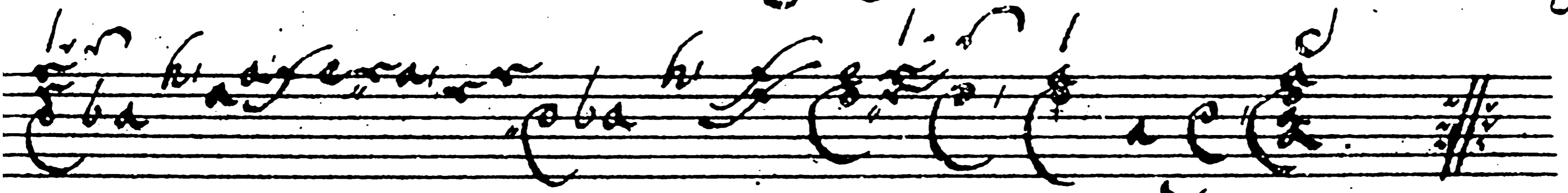
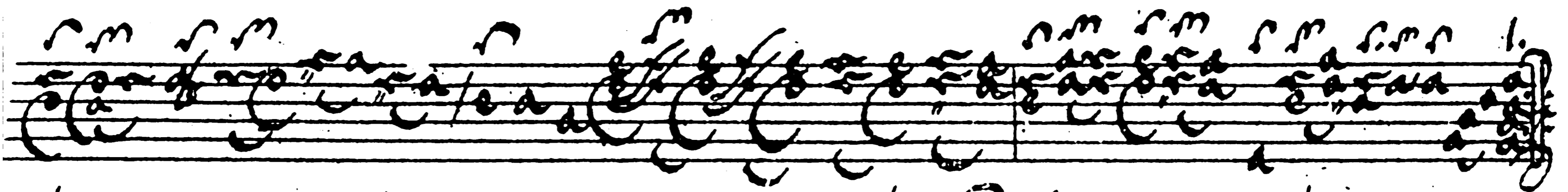
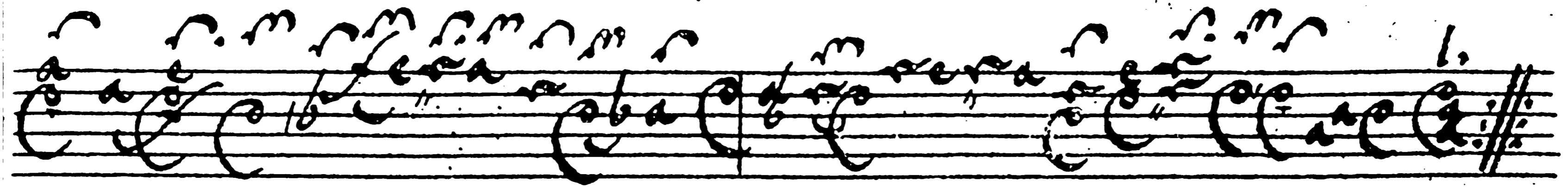
e e e e e e e e e e

XXIII

Allegretto

a a a a a a a a a a

e e e e e e e e e e



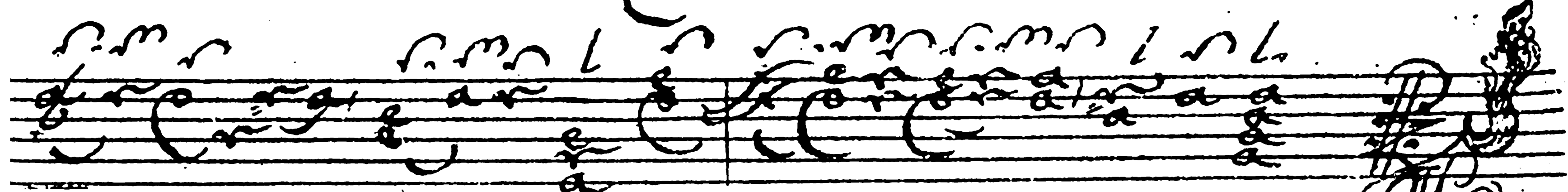
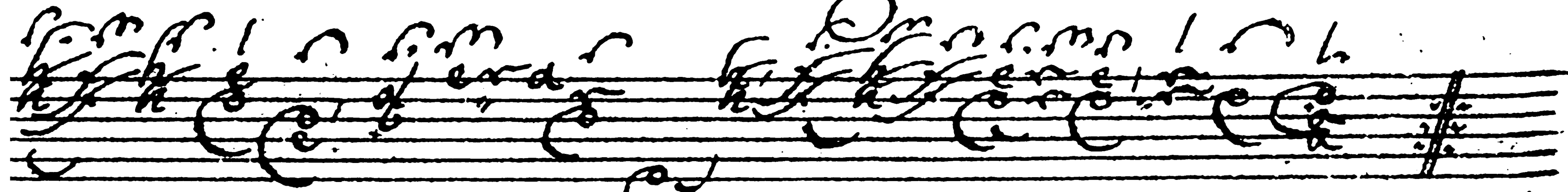
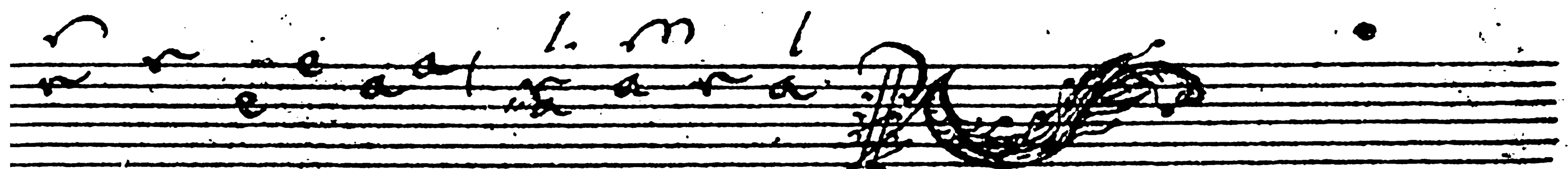
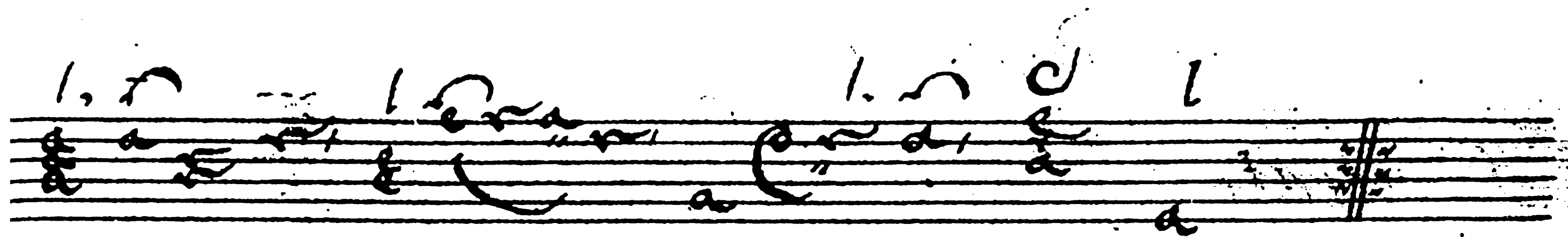
XXIV

Parabola

Handwritten musical notation for 'Parabola' on two staves. The top staff features a treble clef and a key signature of one flat (B-flat). The music begins with a large, decorative initial 'P'. The notation is dense and includes various note values, rests, and bar lines. The bottom staff continues the melody with similar notation.

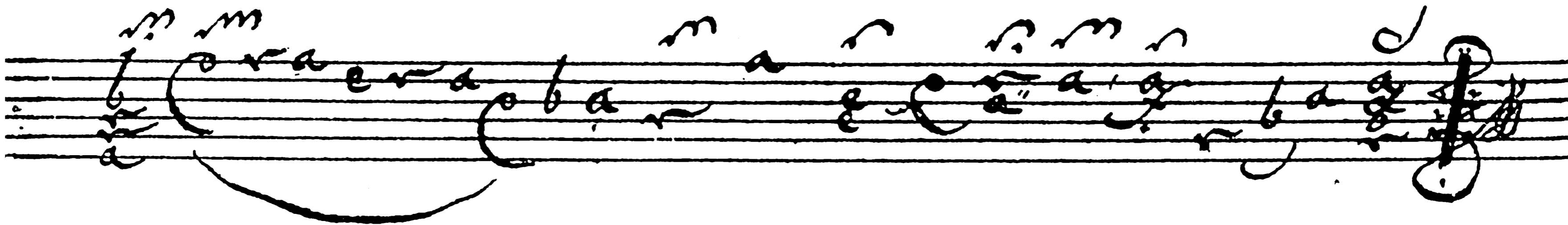
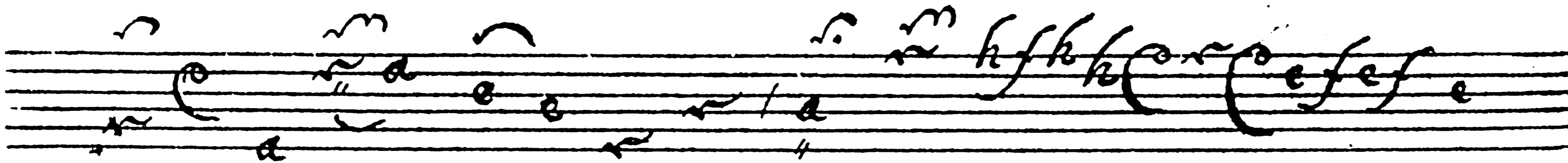
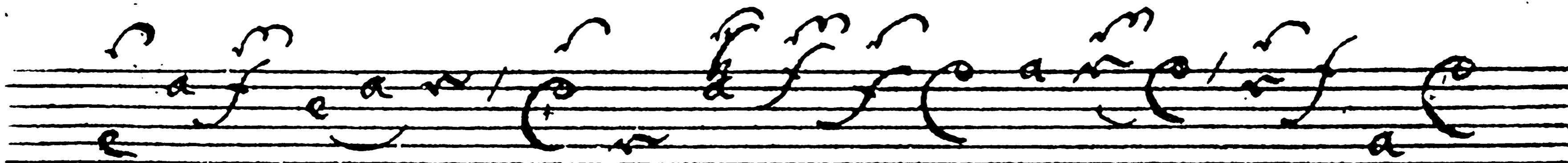
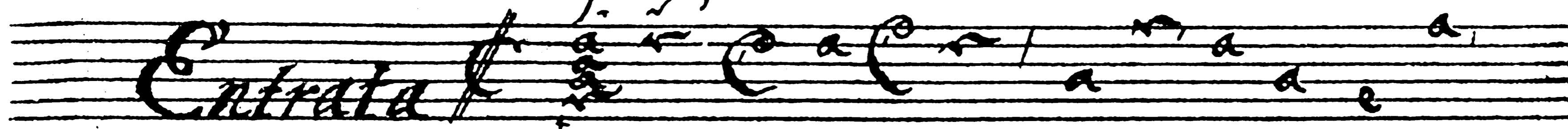
Canonic

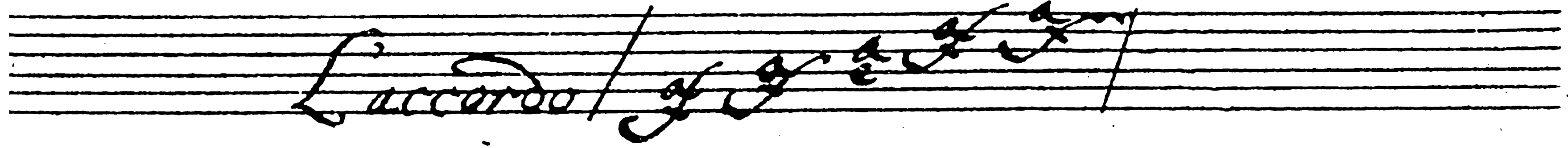
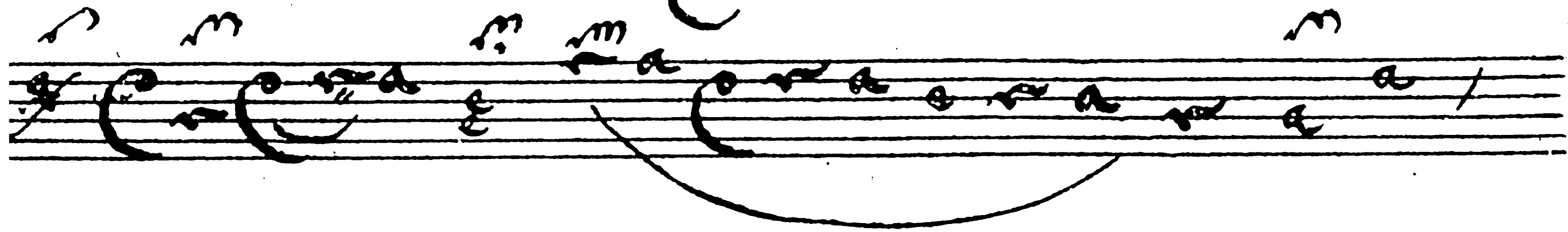
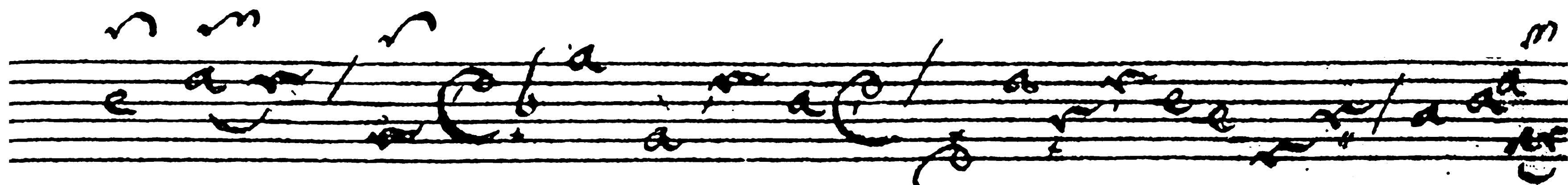
Handwritten musical notation for 'Canonic' on two staves. The top staff features a treble clef and a key signature of one flat (B-flat). The music begins with a large, decorative initial 'C'. The notation is dense and includes various note values, rests, and bar lines. The bottom staff continues the melody with similar notation.

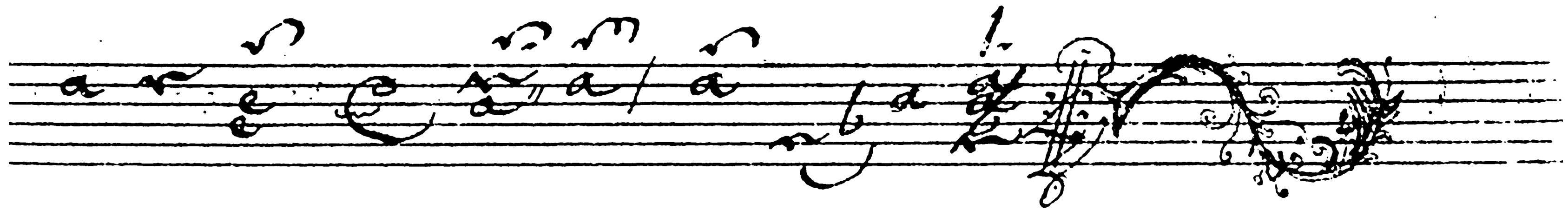
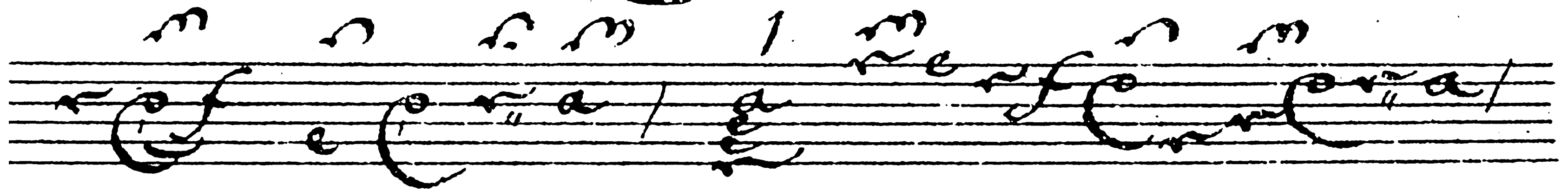
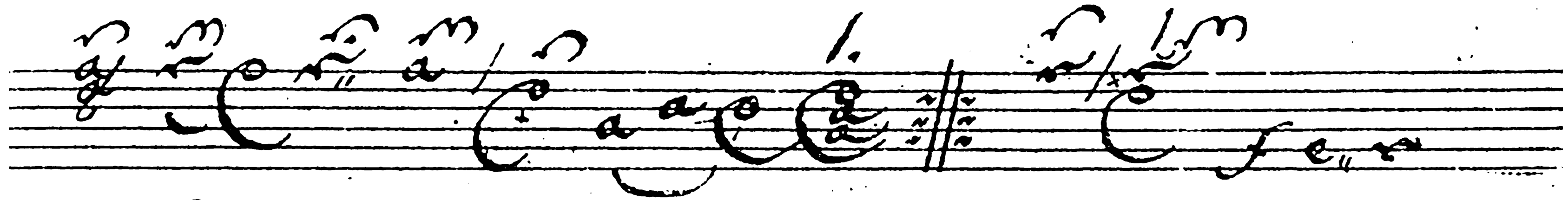
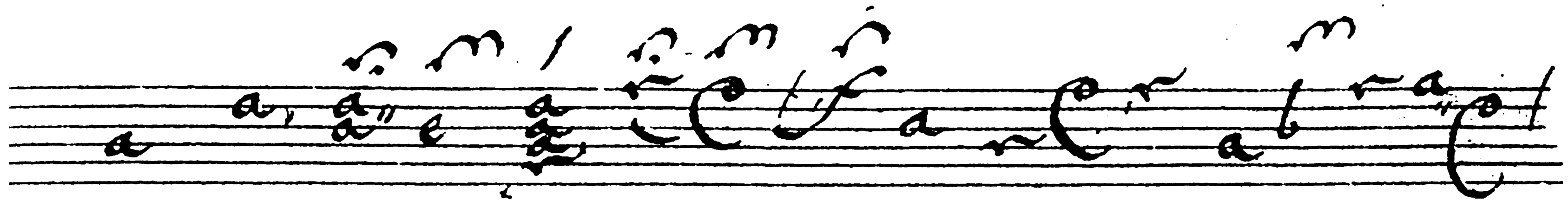


Fin

XXVI Accordo, Ord:

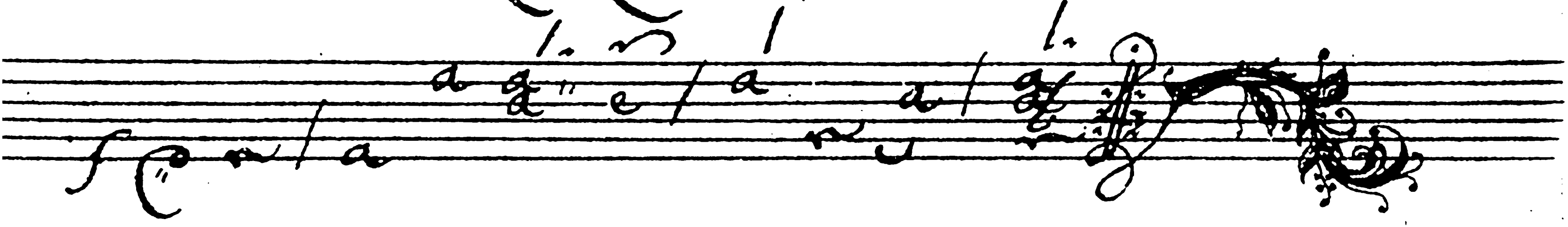
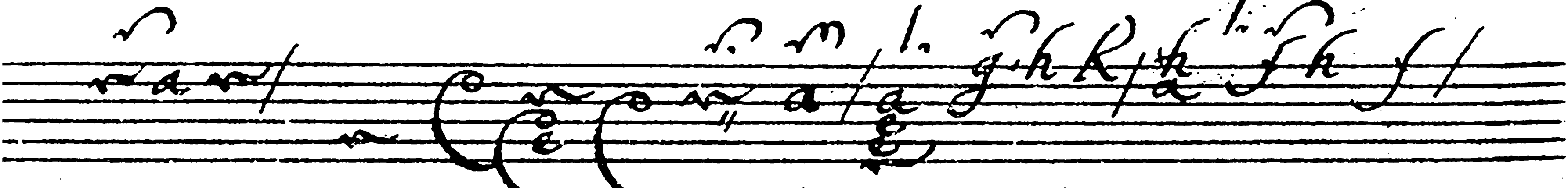
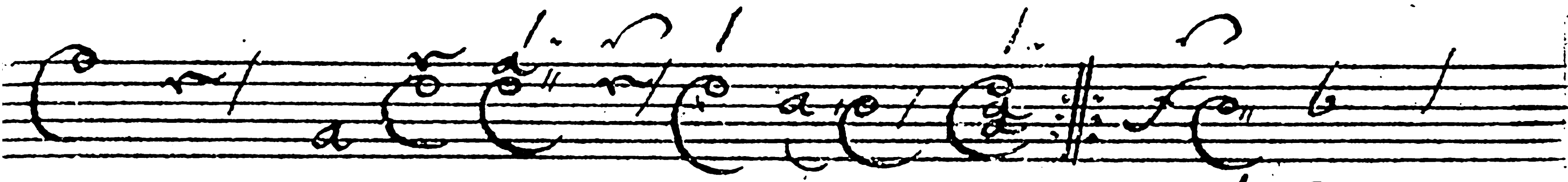






XXVIII

Handwritten musical score for a piece titled "Corrente". The score is written on four staves. The first staff begins with the word "Corrente" in a large, decorative script, followed by a treble clef and a key signature of one sharp (F#). The music consists of a series of notes, including quarter and eighth notes, with some slurs and accents. The second staff continues the melody with similar notation. The third staff features a first ending bracket labeled "1." above it. The fourth staff concludes the piece with a final cadence. The handwriting is fluid and characteristic of 18th or 19th-century manuscript notation.



XXIX

Sarabanda

Handwritten musical score for Sarabanda in B major, 3/4 time. The score consists of four staves. The first staff begins with the title 'Sarabanda' and a treble clef with a sharp sign for the key signature. The music is written in a cursive, handwritten style. The second staff continues the melody with various note values and rests. The third staff shows a change in the melodic line, including some accidentals. The fourth staff concludes the piece with a final cadence and a decorative flourish.

XXX

Capriccio

The image shows a handwritten musical score for a piece titled "Capriccio". The score is written on four staves. The first staff begins with the word "Capriccio" written in a large, decorative, cursive hand. The music is written in a similar cursive style, featuring various note values, rests, and bar lines. The notation is dense and expressive, typical of a handwritten manuscript. The piece is numbered "XXX" at the top center of the page.