

Gottfried Finger

Sonate für 3 Flöten
und Basso continuo in g-moll
nach op.1 Nr.8

Sonate für 3 Flöten und Basso continuo g-moll

nach op.1 Nr.8

Gottfried Finger

Adagio



[Allegro]



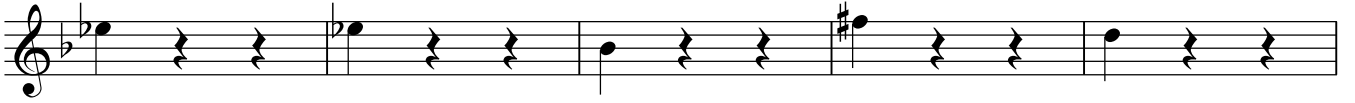
16



24



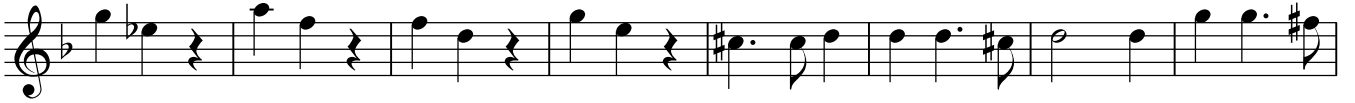
32



37



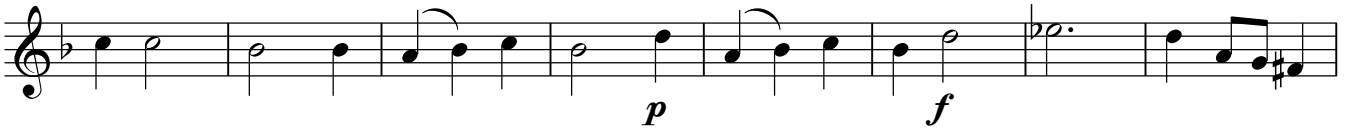
44



52



59



67



74



Adagio

Musical score for the Adagio section, measures 4 through 21. The music is written in treble clef with a key signature of one flat (B-flat) and a common time signature (C). The tempo is marked Adagio. The score includes dynamic markings *p* (piano) and *f* (forte). Measure 4 starts with a quarter rest followed by a quarter note G4. Measure 5 has a quarter note G4, a quarter note A4, and a quarter note Bb4. Measure 6 has a quarter note Bb4, a quarter note C5, and a quarter note Bb4. Measure 7 has a quarter note Bb4, a quarter note C5, and a quarter note Bb4. Measure 8 has a quarter note Bb4, a quarter note C5, and a quarter note Bb4. Measure 9 has a quarter note Bb4, a quarter note C5, and a quarter note Bb4. Measure 10 has a quarter note Bb4, a quarter note C5, and a quarter note Bb4. Measure 11 has a quarter note Bb4, a quarter note C5, and a quarter note Bb4. Measure 12 has a quarter note Bb4, a quarter note C5, and a quarter note Bb4. Measure 13 has a quarter note Bb4, a quarter note C5, and a quarter note Bb4. Measure 14 has a quarter note Bb4, a quarter note C5, and a quarter note Bb4. Measure 15 has a quarter note Bb4, a quarter note C5, and a quarter note Bb4. Measure 16 has a quarter note Bb4, a quarter note C5, and a quarter note Bb4. Measure 17 has a quarter note Bb4, a quarter note C5, and a quarter note Bb4. Measure 18 has a quarter note Bb4, a quarter note C5, and a quarter note Bb4. Measure 19 has a quarter note Bb4, a quarter note C5, and a quarter note Bb4. Measure 20 has a quarter note Bb4, a quarter note C5, and a quarter note Bb4. Measure 21 has a quarter note Bb4, a quarter note C5, and a quarter note Bb4.

Presto

Musical score for the Presto section, measures 22 through 34. The music is written in treble clef with a key signature of one flat (B-flat) and a common time signature (C). The tempo is marked Presto. The score includes dynamic markings *p* (piano) and *f* (forte). Measure 22 starts with a quarter rest followed by a quarter note G4. Measure 23 has a quarter note G4, a quarter note A4, and a quarter note Bb4. Measure 24 has a quarter note Bb4, a quarter note C5, and a quarter note Bb4. Measure 25 has a quarter note Bb4, a quarter note C5, and a quarter note Bb4. Measure 26 has a quarter note Bb4, a quarter note C5, and a quarter note Bb4. Measure 27 has a quarter note Bb4, a quarter note C5, and a quarter note Bb4. Measure 28 has a quarter note Bb4, a quarter note C5, and a quarter note Bb4. Measure 29 has a quarter note Bb4, a quarter note C5, and a quarter note Bb4. Measure 30 has a quarter note Bb4, a quarter note C5, and a quarter note Bb4. Measure 31 has a quarter note Bb4, a quarter note C5, and a quarter note Bb4. Measure 32 has a quarter note Bb4, a quarter note C5, and a quarter note Bb4. Measure 33 has a quarter note Bb4, a quarter note C5, and a quarter note Bb4. Measure 34 has a quarter note Bb4, a quarter note C5, and a quarter note Bb4.