

FUGUE in G

(from Vol.I ms. di Suonate, Concerti, Fughe per Organo)

for Brass Quartet

Score (01':50")

Giuseppe Bencini (fl.1723 - fl.1727)

Arr. Michel Rondeau

Allegro moderato ♩ = 100

Trumpet in C 1

Trumpet in C 2

Trombone

Bass Trombone

This system contains the first four staves of the score. The top staff is for Trumpet in C 1, the second for Trumpet in C 2, the third for Trombone, and the fourth for Bass Trombone. The music is in G major (one sharp) and common time (C). The first two staves have active melodic lines, while the Trombone and Bass Trombone staves are mostly silent, indicated by rests.

C Tpt. 1

C Tpt. 2

Tbn.

B. Tbn.

This system contains the next four staves, starting at measure 5. The top staff is for C Trumpet 1, the second for C Trumpet 2, the third for Trombone (Tbn.), and the fourth for Bass Trombone (B. Tbn.). The C Trumpet 1 staff has a complex melodic line with many sixteenth notes. The C Trumpet 2 staff has a more active line. The Trombone and Bass Trombone staves have rests.

C Tpt. 1

C Tpt. 2

Tbn.

B. Tbn.

This system contains the final four staves, starting at measure 9. The top staff is for C Trumpet 1, the second for C Trumpet 2, the third for Trombone (Tbn.), and the fourth for Bass Trombone (B. Tbn.). The C Trumpet 1 staff has a melodic line with some chromaticism. The C Trumpet 2 staff has a rhythmic pattern. The Trombone and Bass Trombone staves have active lines.

FUGUE in G - Bencini - Score

13

C Tpt. 1

C Tpt. 2

Tbn.

B. Tbn.

This system of music covers measures 13 to 15. The C Tpt. 1 part begins with a melodic line in measure 13, featuring eighth and sixteenth notes. The C Tpt. 2 part has a more active role, with sixteenth-note patterns. The Tbn. part provides harmonic support with chords and single notes. The B. Tbn. part has a steady bass line with quarter and eighth notes.

16

C Tpt. 1

C Tpt. 2

Tbn.

B. Tbn.

This system of music covers measures 16 to 19. The C Tpt. 1 part continues its melodic development. The C Tpt. 2 part has a more active role, with sixteenth-note patterns. The Tbn. part provides harmonic support with chords and single notes. The B. Tbn. part has a steady bass line with quarter and eighth notes.

20

C Tpt. 1

C Tpt. 2

Tbn.

B. Tbn.

This system of music covers measures 20 to 23. The C Tpt. 1 part continues its melodic development. The C Tpt. 2 part has a more active role, with sixteenth-note patterns. The Tbn. part provides harmonic support with chords and single notes. The B. Tbn. part has a steady bass line with quarter and eighth notes.

FUGUE in G - Bencini - Score

24

C Tpt. 1

C Tpt. 2

Tbn.

B. Tbn.

This system of music covers measures 24 to 26. It features four staves: C Tpt. 1 (treble clef), C Tpt. 2 (treble clef), Tbn. (bass clef), and B. Tbn. (bass clef). The key signature is one sharp (F#). In measure 24, C Tpt. 1 has a melodic line with eighth and sixteenth notes, while C Tpt. 2 plays a rhythmic accompaniment of eighth notes. Tbn. is silent, and B. Tbn. plays a bass line with eighth notes. In measure 25, C Tpt. 1 continues its melodic line, C Tpt. 2 continues with eighth notes, Tbn. has a whole note chord, and B. Tbn. continues with eighth notes. In measure 26, C Tpt. 1 has a melodic line, C Tpt. 2 has eighth notes, Tbn. has a half note chord, and B. Tbn. has eighth notes.

27

C Tpt. 1

C Tpt. 2

Tbn.

B. Tbn.

This system of music covers measures 27 to 29. It features four staves: C Tpt. 1 (treble clef), C Tpt. 2 (treble clef), Tbn. (bass clef), and B. Tbn. (bass clef). The key signature is one sharp (F#). In measure 27, C Tpt. 1 has a half note, C Tpt. 2 has eighth notes, Tbn. is silent, and B. Tbn. has eighth notes. In measure 28, C Tpt. 1 has a half note, C Tpt. 2 has eighth notes, Tbn. has a half note chord, and B. Tbn. has eighth notes. In measure 29, C Tpt. 1 has a melodic line, C Tpt. 2 has eighth notes, Tbn. has a half note chord, and B. Tbn. has eighth notes.

30

C Tpt. 1

C Tpt. 2

Tbn.

B. Tbn.

This system of music covers measures 30 to 32. It features four staves: C Tpt. 1 (treble clef), C Tpt. 2 (treble clef), Tbn. (bass clef), and B. Tbn. (bass clef). The key signature is one sharp (F#). In measure 30, C Tpt. 1 has a melodic line, C Tpt. 2 has eighth notes, Tbn. has eighth notes, and B. Tbn. has eighth notes. In measure 31, C Tpt. 1 has a melodic line, C Tpt. 2 has eighth notes, Tbn. is silent, and B. Tbn. has eighth notes. In measure 32, C Tpt. 1 has a melodic line, C Tpt. 2 has eighth notes, Tbn. has a half note chord, and B. Tbn. has eighth notes.

FUGUE in G

(from Vol.I ms. di Suonate, Concerti, Fughe per Organo)

for Brass Quartet

Giuseppe Bencini (fl.1723 - fl.1727)

Arr. Michel Rondeau

C Trumpets

Allegro moderato ♩ = 100

Measures 1-4 of the C Trumpets part. The music is in G major (one sharp) and common time. The first staff shows a melodic line starting with a whole note G, followed by quarter notes A, B, and C. The second staff provides a rhythmic accompaniment with eighth and sixteenth notes.

Measures 5-8 of the C Trumpets part. The first staff continues the melodic line with eighth and sixteenth notes. The second staff continues the rhythmic accompaniment.

Measures 9-12 of the C Trumpets part. The first staff features a melodic line with some chromaticism. The second staff continues the rhythmic accompaniment.

Measures 13-15 of the C Trumpets part. The first staff shows a melodic line with a chromatic descent. The second staff continues the rhythmic accompaniment.

Measures 16-19 of the C Trumpets part. The first staff continues the melodic line. The second staff continues the rhythmic accompaniment.

Measures 20-23 of the C Trumpets part. The first staff continues the melodic line. The second staff continues the rhythmic accompaniment.

FUGUE in G - Bencini - C Trumpets

24

Measures 24-27 of the score. The top staff (treble clef) features a melodic line with eighth and sixteenth notes, including a dotted quarter note and a half note. The bottom staff (bass clef) provides a rhythmic accompaniment with eighth and sixteenth notes.

28

Measures 28-31 of the score. The top staff continues the melodic line with a half note and eighth notes. The bottom staff features a steady eighth-note accompaniment.

32

Measures 32-34 of the score. The top staff has a melodic line with eighth notes and a dotted quarter note. The bottom staff continues with eighth-note accompaniment.

35

Measures 35-38 of the score. The top staff features a melodic line with eighth notes and a dotted quarter note. The bottom staff has a rhythmic accompaniment of eighth notes.

39

Measures 39-42 of the score. The top staff has a melodic line with eighth notes and a dotted quarter note. The bottom staff features eighth-note accompaniment.

43

Measures 43-46 of the score. The top staff features a melodic line with eighth notes and a dotted quarter note. The bottom staff has eighth-note accompaniment. The piece concludes with a double bar line.

FUGUE in G

(from Vol.I ms. di Suonate, Concerti, Fughe per Organo)

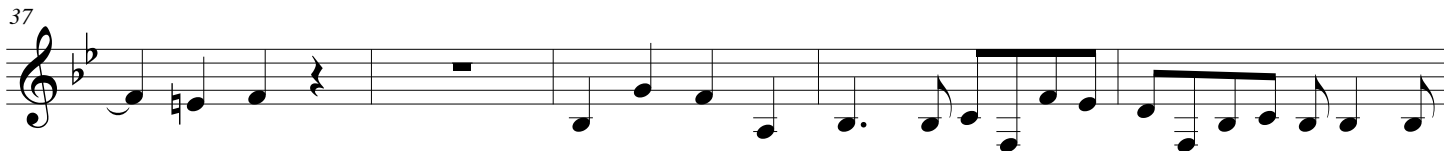
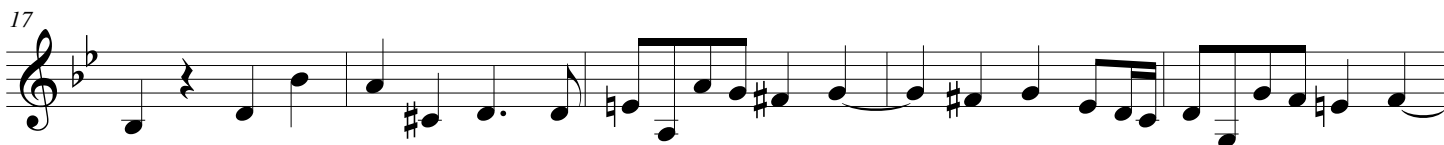
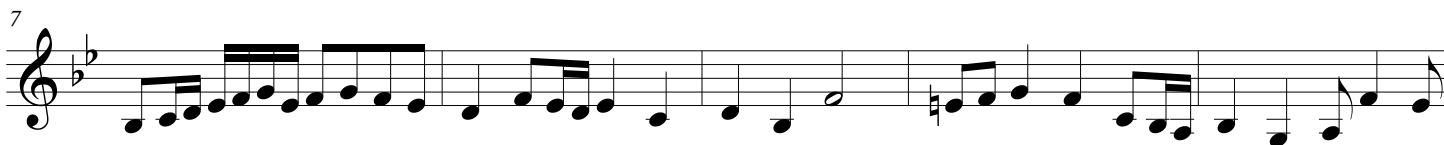
for Brass Quartet

Giuseppe Bencini (fl.1723 - fl.1727)

Arr. Michel Rondeau

A Trumpet 1

Allegro moderato $\text{♩} = 100$



FUGUE in G

(from Vol.I ms. di Suonate, Concerti, Fughe per Organo)

for Brass Quartet

Trombones

Giuseppe Bencini (fl.1723 - fl.1727)

Arr. Michel Rondeau

Allegro moderato ♩ = 100

Musical notation for Trombones, measures 1-7. The score is in G major (one sharp) and common time. Measures 1 and 3 contain a whole rest with a '2' above it, indicating a two-measure rest. Measures 2, 4, 5, and 6 contain various rhythmic patterns including quarter and eighth notes.

Musical notation for Trombones, measures 8-12. Measure 8 starts with a treble clef. Measures 8-12 show a complex rhythmic pattern with eighth and sixteenth notes in both staves.

Musical notation for Trombones, measures 13-16. Measures 13-16 continue the rhythmic pattern with eighth and sixteenth notes, featuring some rests and accidentals.

Musical notation for Trombones, measures 17-20. Measures 17-20 show a continuation of the rhythmic pattern with eighth and sixteenth notes, including some rests and accidentals.

Musical notation for Trombones, measures 21-24. Measures 21-24 conclude the section with eighth and sixteenth notes, some rests, and a final cadence.

FUGUE in G - Bencini - Trombones

26

Measures 26-29: The first staff (treble clef) begins with a melodic line in G major, featuring eighth and quarter notes. The second staff (bass clef) provides a rhythmic accompaniment with eighth and quarter notes, including some chromatic movement.

30

Measures 30-33: The first staff continues the melodic line with some rests. The second staff features a more active bass line with eighth and quarter notes, including chromatic passages.

34

Measures 34-37: The first staff has a more complex melodic line with sixteenth notes and rests. The second staff continues with a steady bass line of eighth and quarter notes.

38

Measures 38-41: The first staff features a dense melodic texture with sixteenth notes. The second staff has a bass line with eighth and quarter notes, including some chromatic movement.

42

Measures 42-45: The first staff has a melodic line with a long slur over measures 42-43. The second staff features a bass line with a long slur over measures 42-44, ending with a double bar line.

FUGUE in G

(from Vol.I ms. di Suonate, Concerti, Fughe per Organo)
for Brass Quartet

F Horn (Trombone)

Giuseppe Bencini (fl.1723 - fl.1727)

Arr. Michel Rondeau

Allegro moderato ♩ = 100

2

2

8

3

16

22

29

34

38

42