

2^o
Mus. Pr.

169

Cornet. Rip.

Vespera Long: et breviores
Cum Lyt: B. V. Maria.

a' 4 Voc: 2 W 2, Viol. 4 Rip.
Con alijs Stron ad libitu.

Bibern

PPio

Mus. Fr. 169.

E choro S. Michaelis.

2^o

Bibern

Cornetto Solo

Handwritten musical notation on a five-line staff, featuring a treble clef, a key signature of one sharp (F#), and a common time signature (C). The notation includes various rhythmic values and rests.

Dixit

Handwritten musical notation on a five-line staff, starting with a common time signature (C) and a key signature of one sharp (F#). It includes a large number '70' above the staff and a complex rhythmic pattern.

Handwritten musical notation on a five-line staff, featuring a treble clef, a key signature of one sharp (F#), and a common time signature (C). The notation includes various rhythmic values and rests.

Handwritten musical notation on a five-line staff, featuring a treble clef, a key signature of one sharp (F#), and a common time signature (C). The notation includes various rhythmic values and rests.

Handwritten musical notation on a five-line staff, featuring a treble clef, a key signature of one sharp (F#), and a common time signature (C). It includes a large number '29' above the staff and a complex rhythmic pattern.

Handwritten musical notation on a five-line staff, featuring a treble clef, a key signature of one sharp (F#), and a common time signature (C). The notation includes various rhythmic values and rests.

Handwritten musical notation on a five-line staff, featuring a treble clef, a key signature of one sharp (F#), and a common time signature (C). The notation includes various rhythmic values and rests.

Handwritten musical notation on a five-line staff, featuring a treble clef, a key signature of one sharp (F#), and a common time signature (C). The notation includes various rhythmic values and rests.

Handwritten musical notation on a five-line staff, featuring a treble clef, a key signature of one sharp (F#), and a common time signature (C). The notation includes various rhythmic values and rests.

Handwritten musical notation on a five-line staff, featuring a treble clef, a key signature of one sharp (F#), and a common time signature (C). It includes a large number '66' above the staff and a complex rhythmic pattern.

Handwritten musical notation on a five-line staff. The key signature has two sharps (F# and C#). The time signature is 3/2. The notation includes a series of vertical lines (possibly representing a keyboard or a specific rhythmic pattern) followed by several measures of notes, including quarter and eighth notes, and rests. A measure number '52' is written above the first measure.

Confitebor

Handwritten musical notation on a five-line staff, continuing the piece. It features a series of notes, including quarter and eighth notes, and rests. The notation is dense and rhythmic.

Handwritten musical notation on a five-line staff. It includes a measure with a measure number '35' above it, followed by several measures of notes and rests.

Handwritten musical notation on a five-line staff, continuing the piece with various note values and rests.

Handwritten musical notation on a five-line staff. It includes a measure with a measure number '26' above it, followed by several measures of notes and rests.

Handwritten musical notation on a five-line staff, continuing the piece with various note values and rests.

Handwritten musical notation on a five-line staff, continuing the piece with various note values and rests.

Handwritten musical notation on a five-line staff, continuing the piece with various note values and rests.

Handwritten musical notation on a five-line staff. It includes a measure with a measure number '20' above it, followed by several measures of notes and rests.

Beatgrin

Handwritten musical notation on a five-line staff, continuing the piece with various note values and rests.

Laudate Domini:

32

Magnificat.

Psalmi de B: In: Virgine.

Cicxit

20

13

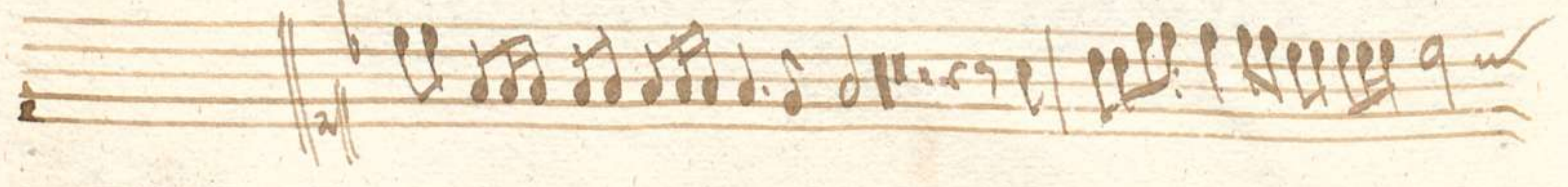
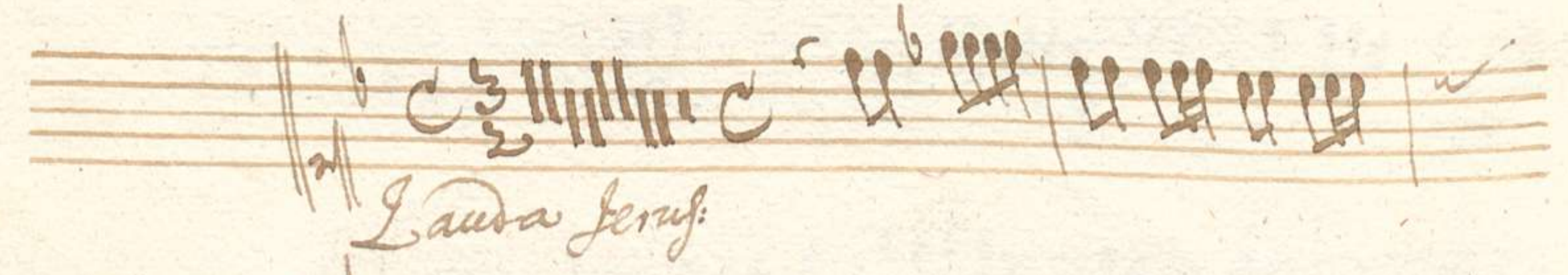
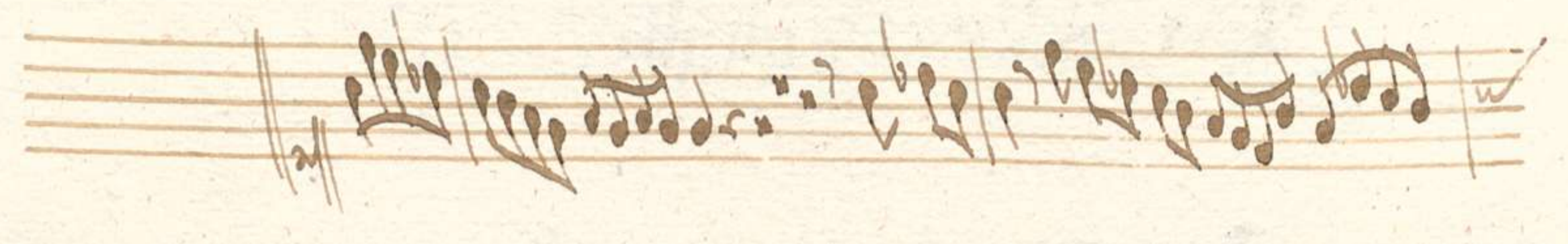
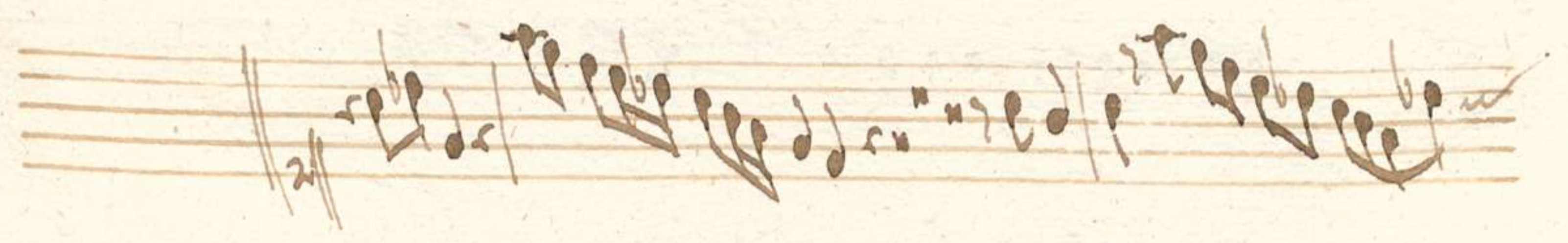
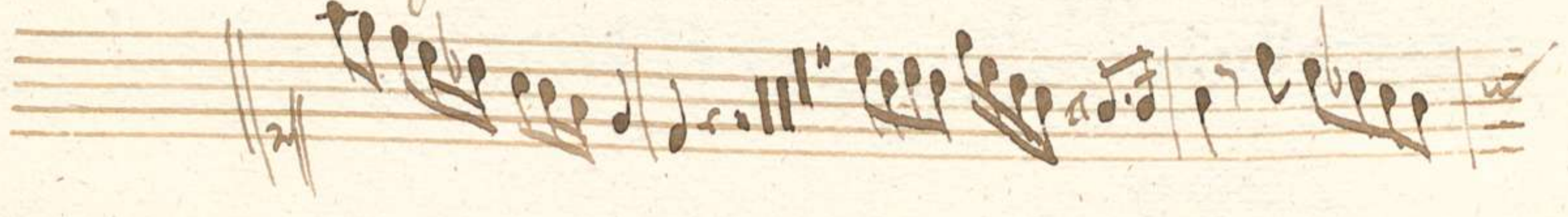
25

Laudate

25
4
Liataty

34
2

31
4



Handwritten musical notation on a five-line staff. The key signature has one flat (B-flat). The time signature is 3/4. The notation includes a treble clef, a common time signature, and various rhythmic values such as eighth and sixteenth notes. The piece concludes with a fermata.

Handwritten musical notation on a five-line staff. The key signature has one flat. The notation includes a treble clef and various rhythmic values. The piece concludes with a fermata.

Handwritten musical notation on a five-line staff. The key signature has one flat. The time signature is 4/4. The notation includes a treble clef, a common time signature, and various rhythmic values. The piece concludes with a fermata.

Handwritten musical notation on a five-line staff. The key signature has one flat. The notation includes a treble clef and various rhythmic values. The piece concludes with a fermata.

Handwritten musical notation on a five-line staff. The key signature has one flat. The notation includes a treble clef and various rhythmic values. The piece concludes with a fermata.

Handwritten musical notation on a five-line staff. The key signature has one flat. The time signature is 4/4. The notation includes a treble clef, a common time signature, and various rhythmic values. The piece concludes with a fermata.

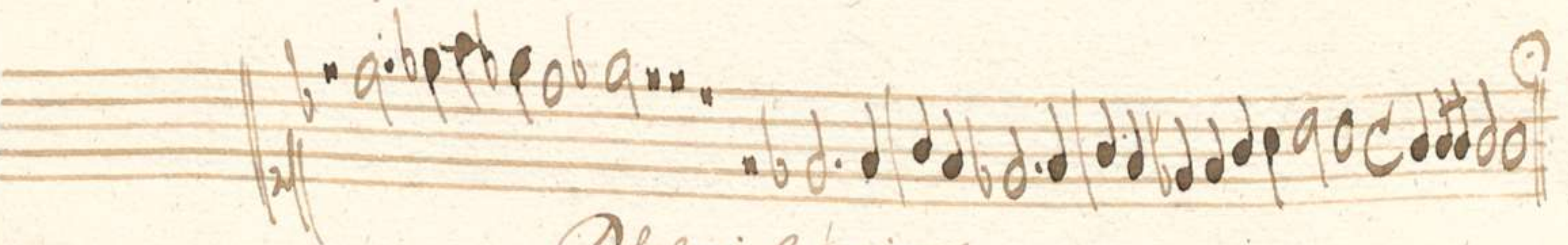
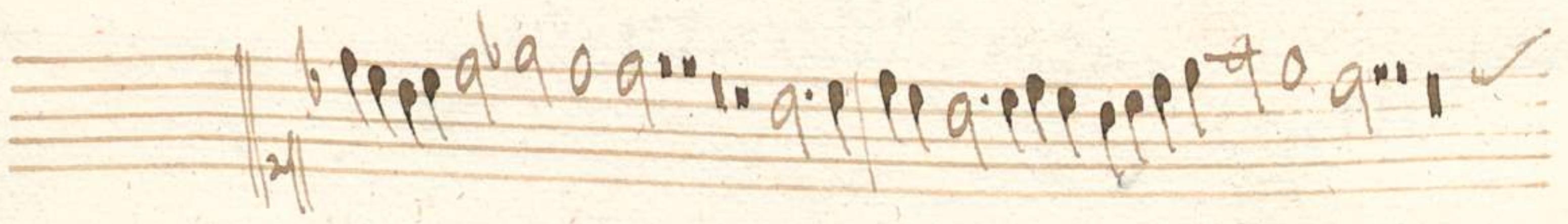
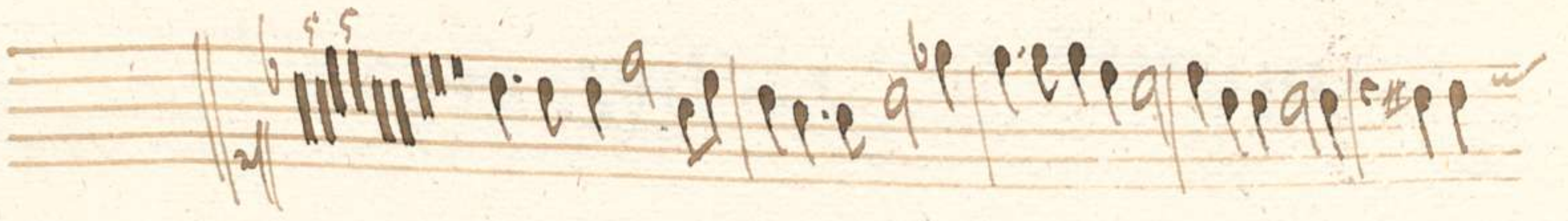
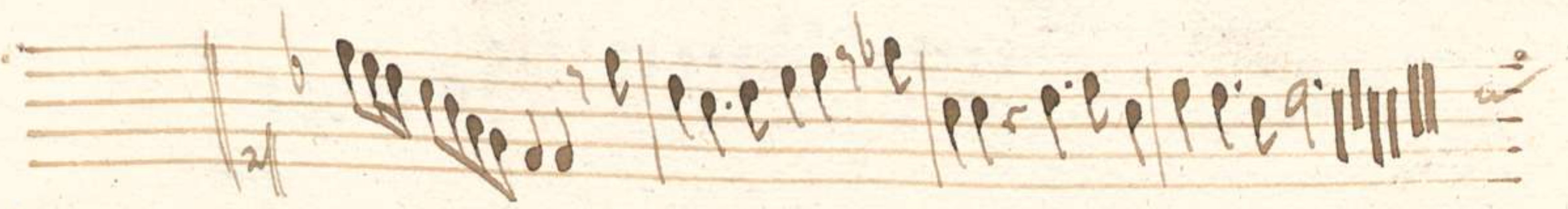
Magnificat

Handwritten musical notation on a five-line staff. The key signature has one flat. The notation includes a treble clef and various rhythmic values. The piece concludes with a fermata.

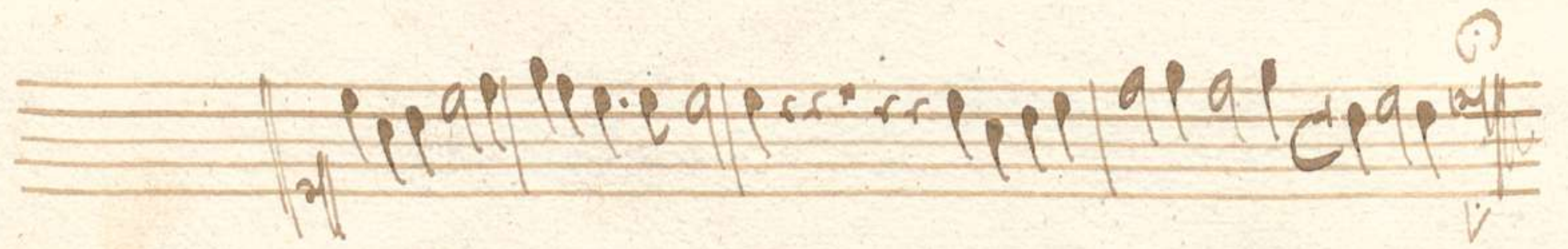
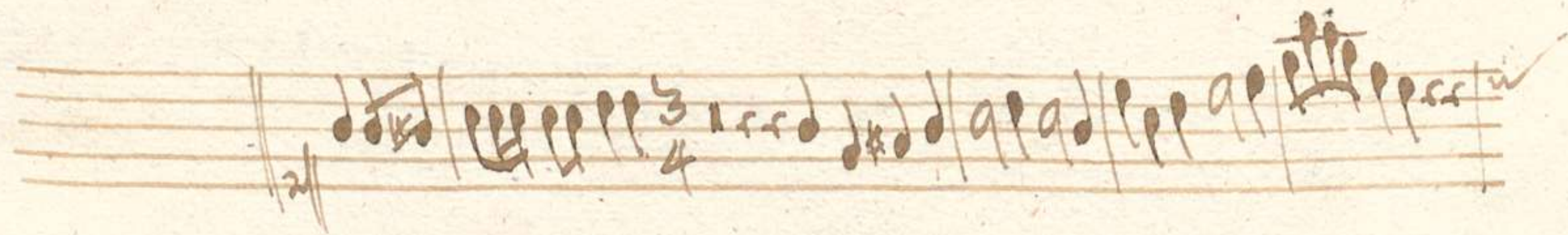
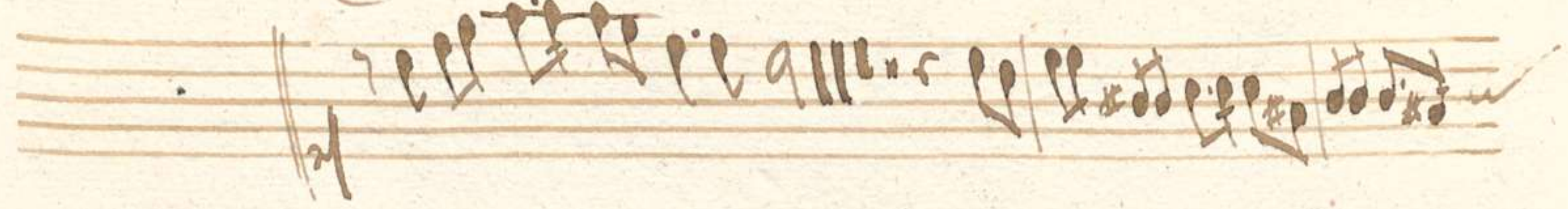
Handwritten musical notation on a five-line staff. The key signature has one flat. The notation includes a treble clef and various rhythmic values. The piece concludes with a fermata.

Handwritten musical notation on a five-line staff. The key signature has one flat. The time signature is 3/4. The notation includes a treble clef, a common time signature, and various rhythmic values. The piece concludes with a fermata.

Handwritten musical notation on a five-line staff. The key signature has one flat. The time signature is 4/4. The notation includes a treble clef, a common time signature, and various rhythmic values. The piece concludes with a fermata.



Psalmi breviores.



Handwritten musical notation on a five-line staff. The notation includes various rhythmic values, accidentals, and a double bar line. A circled 'i' is written above the staff.

Handwritten musical notation on a five-line staff, continuing the piece with similar rhythmic patterns and accidentals.

Handwritten musical notation on a five-line staff, featuring a circled 'o' above the staff.

Handwritten musical notation on a five-line staff. The word "Beaty" is written below the staff.

Handwritten musical notation on a five-line staff.

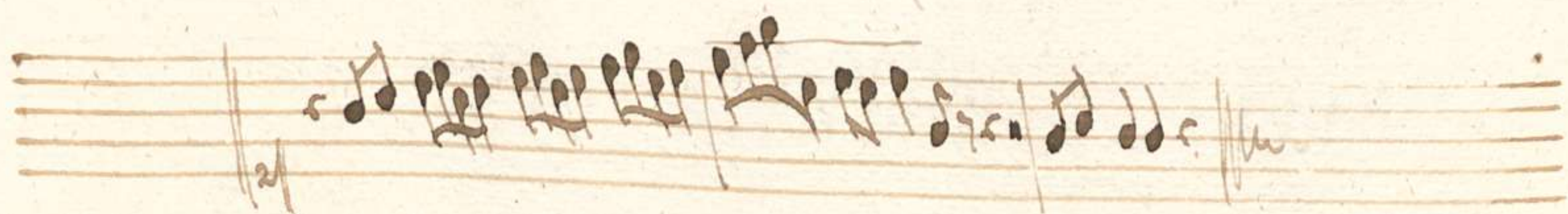
Handwritten musical notation on a five-line staff.

Handwritten musical notation on a five-line staff.

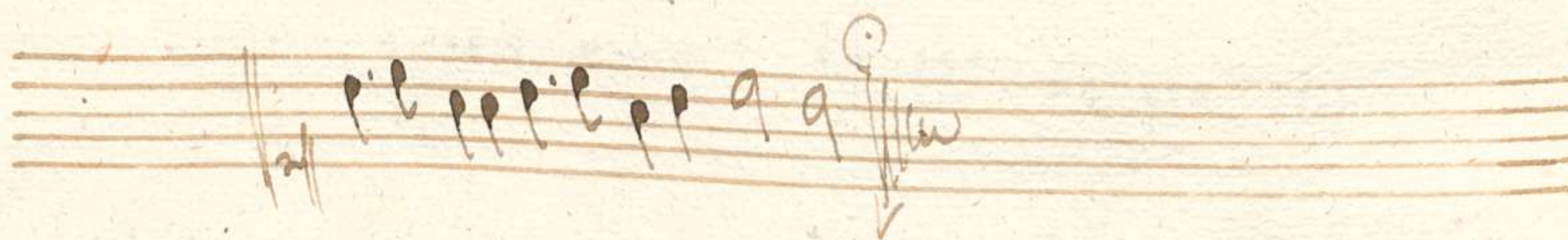
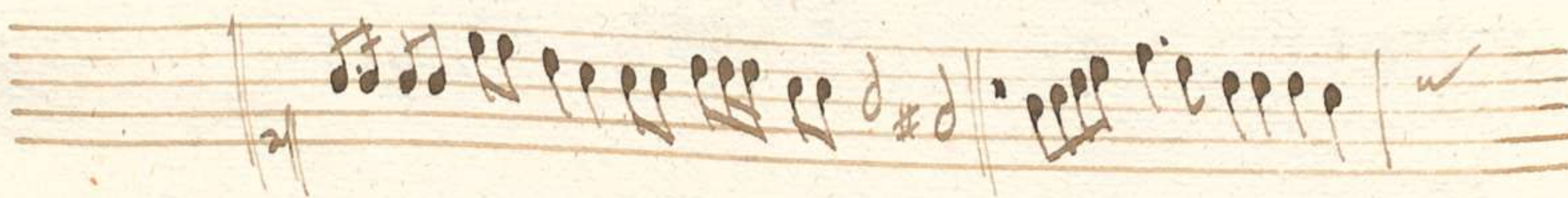
Handwritten musical notation on a five-line staff.

Handwritten musical notation on a five-line staff. The word "Laudate" is written below the staff.

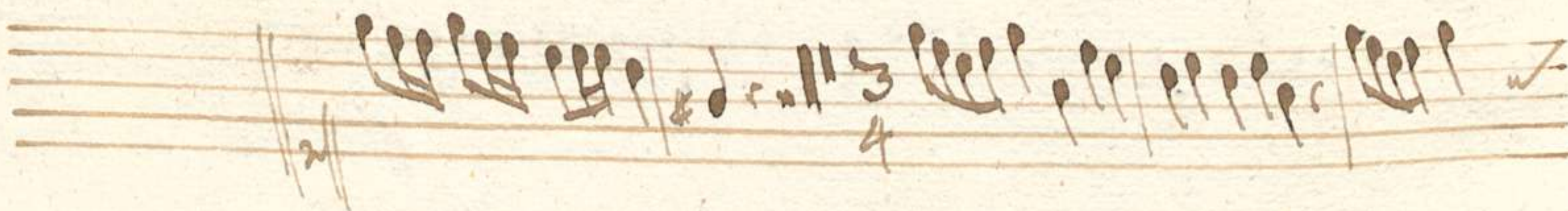
Handwritten musical notation on a five-line staff.



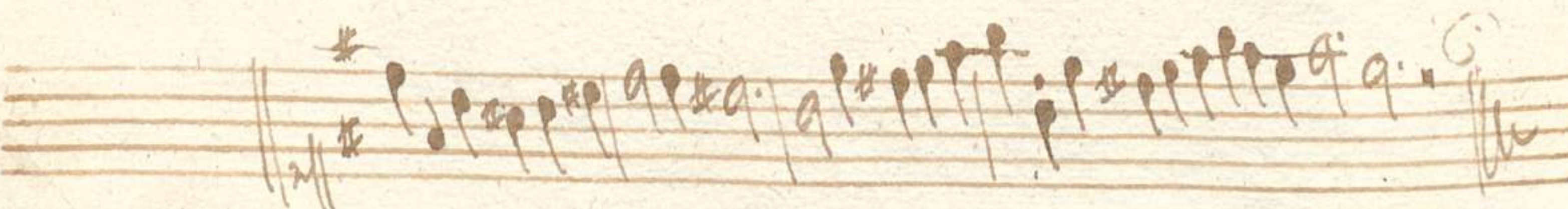
Laudate dominum



Laudate pueri.



Labat



Handwritten musical notation on a five-line staff. The time signature is $\frac{3}{2}$. The music begins with a double bar line and a repeat sign. The notes are mostly quarter and eighth notes, with some rests. The piece ends with a double bar line and a fermata.

Nisi

Handwritten musical notation on a five-line staff. The music consists of a series of quarter notes, some beamed together, and some eighth notes. It ends with a double bar line and a fermata.

Handwritten musical notation on a five-line staff. The music features a mix of quarter, eighth, and sixteenth notes, with some rests. It concludes with a double bar line and a fermata.

Handwritten musical notation on a five-line staff. The music is written in a style with many beamed notes and rests. It ends with a double bar line and a fermata.

Lauda Jeruf:

Handwritten musical notation on a five-line staff. The music is characterized by dense beaming and rests. It ends with a double bar line and a fermata.

Handwritten musical notation on a five-line staff. The music consists of quarter and eighth notes with some rests. It ends with a double bar line and a fermata.

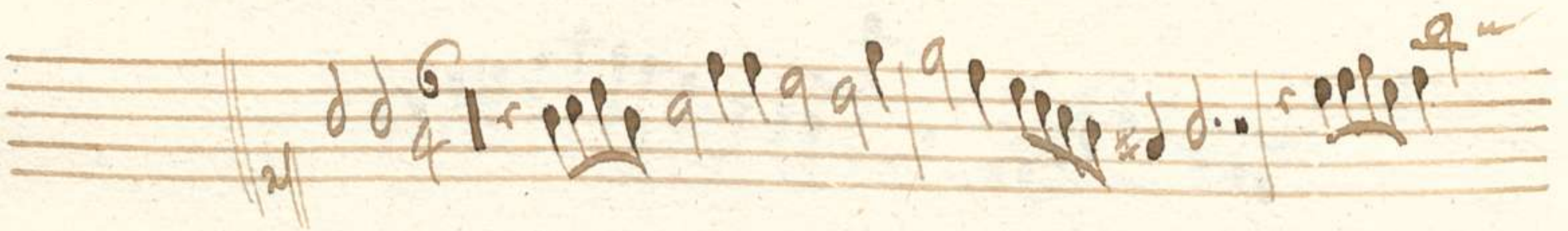
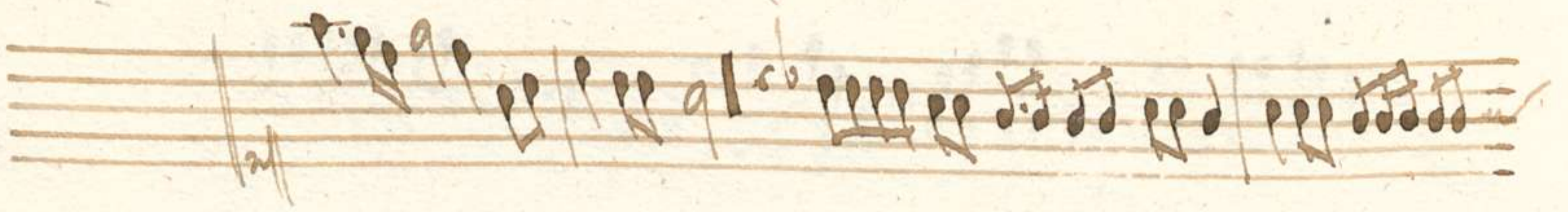
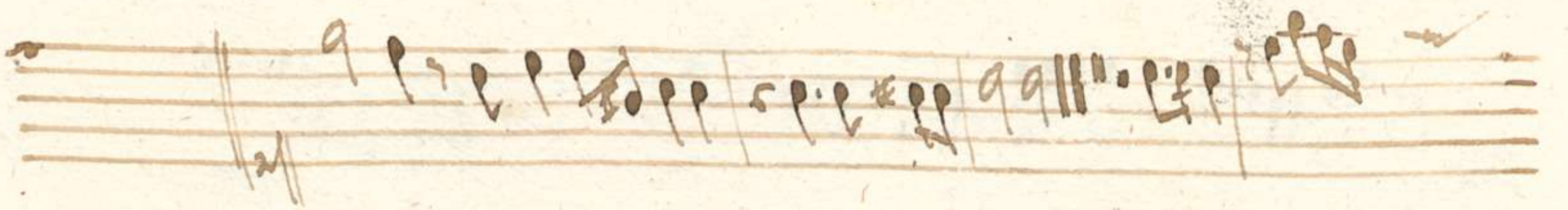
Handwritten musical notation on a five-line staff. The music features quarter and eighth notes with rests. It ends with a double bar line and a fermata.

Handwritten musical notation on a five-line staff. The music is sparse, with a few quarter notes and rests. It ends with a double bar line and a fermata.

Handwritten musical notation on a five-line staff. The time signature is $\frac{3}{2}$. The music starts with a double bar line and a repeat sign. It ends with a double bar line and a fermata.

Magnificat

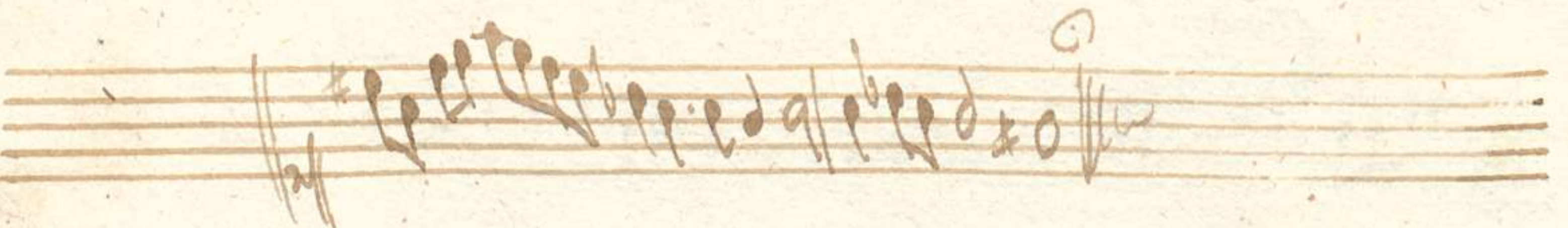
Handwritten musical notation on a five-line staff. The music consists of quarter and eighth notes with rests. It ends with a double bar line and a fermata.



Psalmi per annum necessarii.

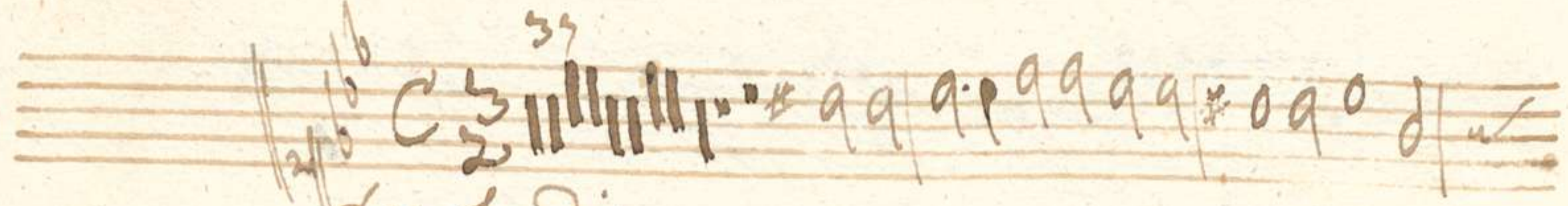
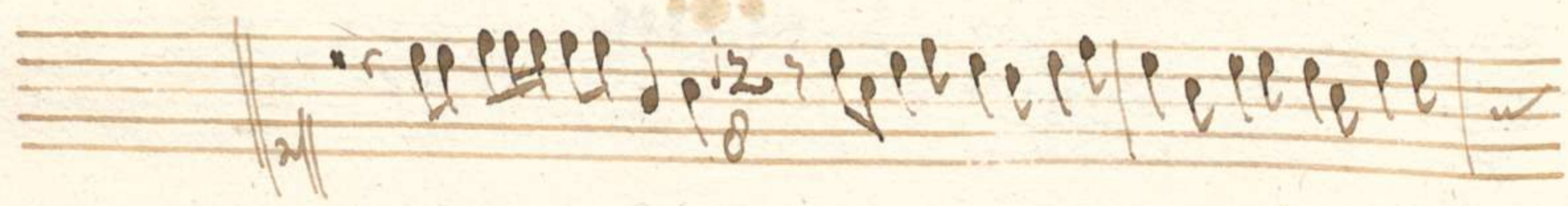


Credidi.

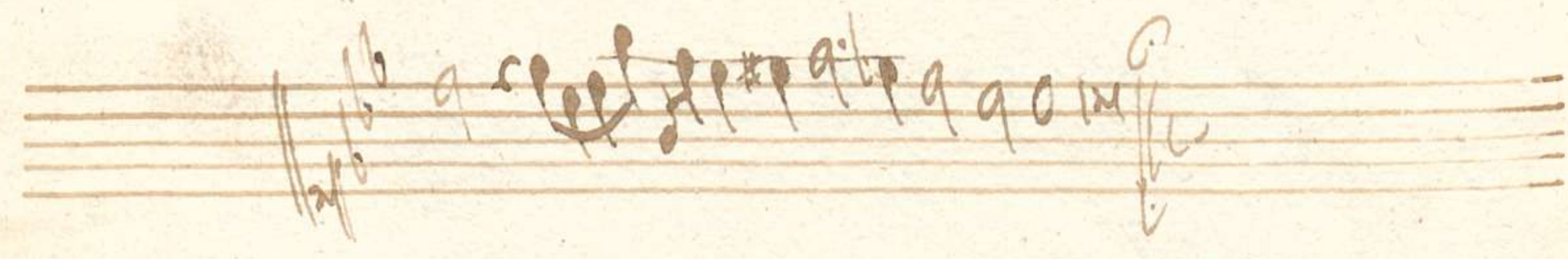
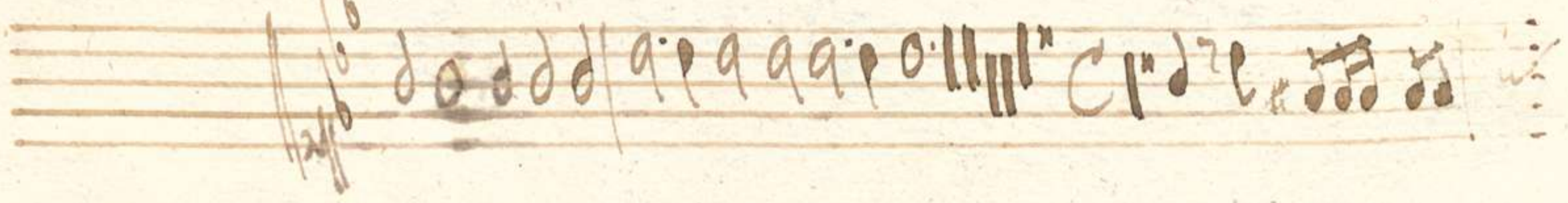


Inconveniendo

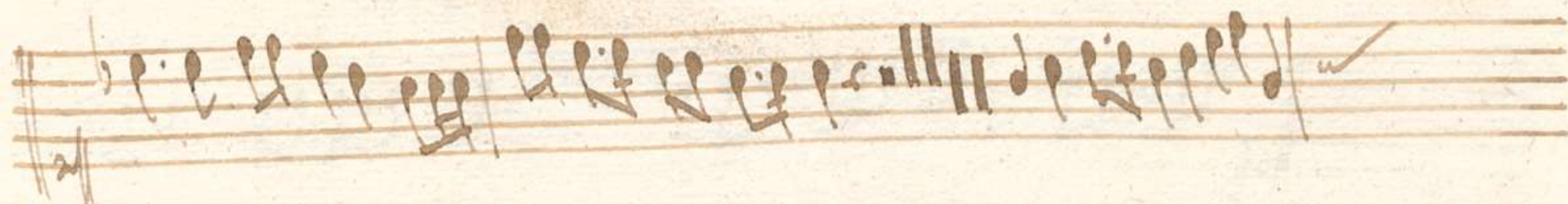
Domine probasti



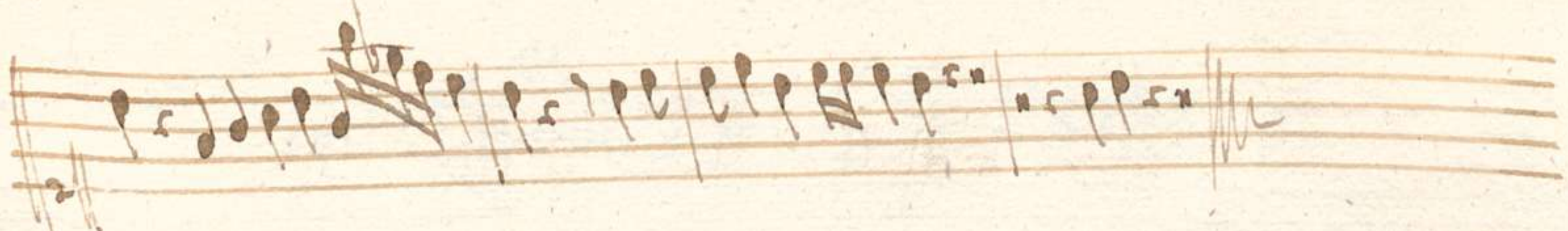
Deprofundis



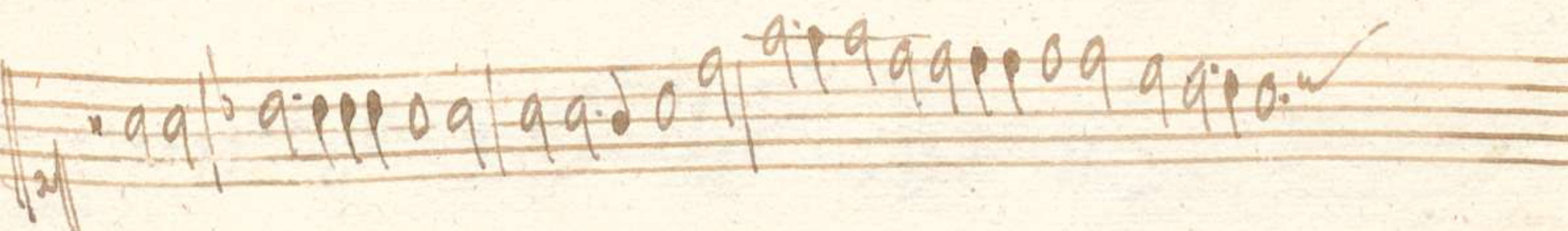
Memento.

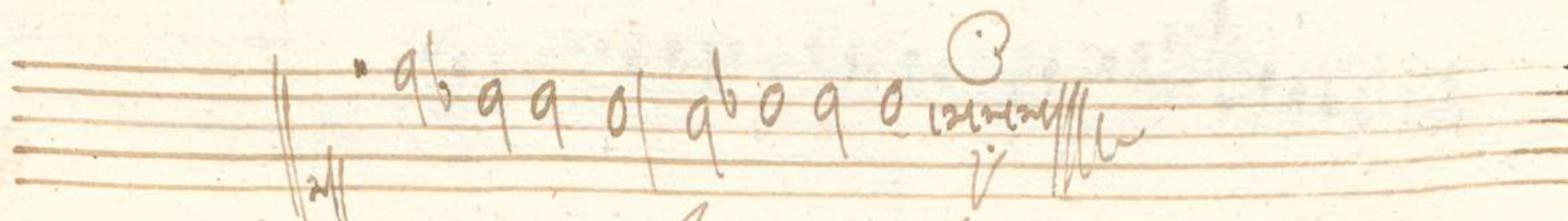
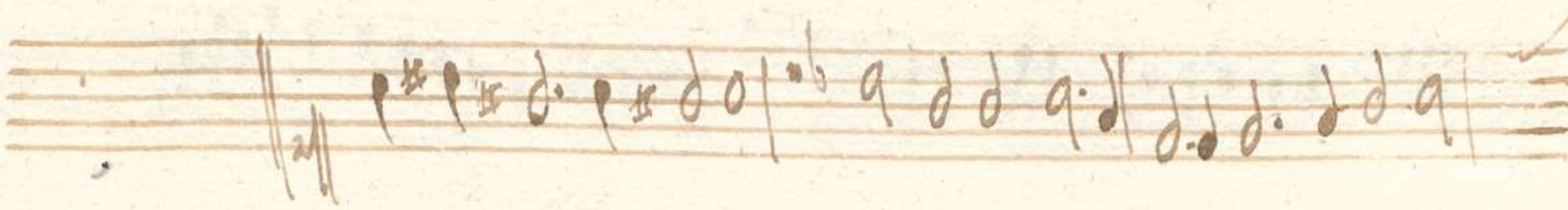
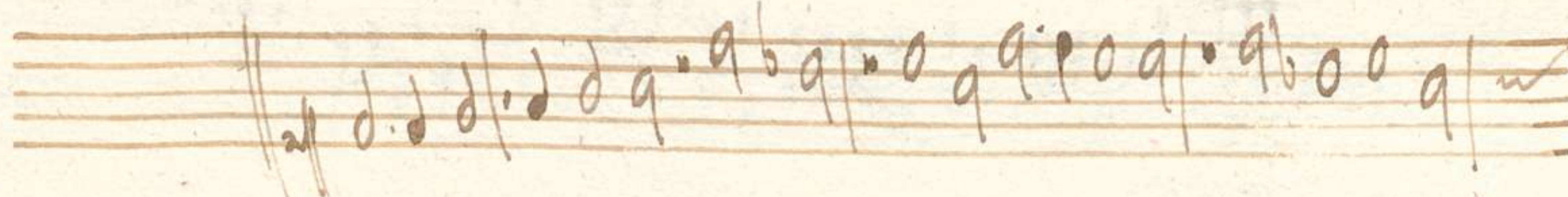
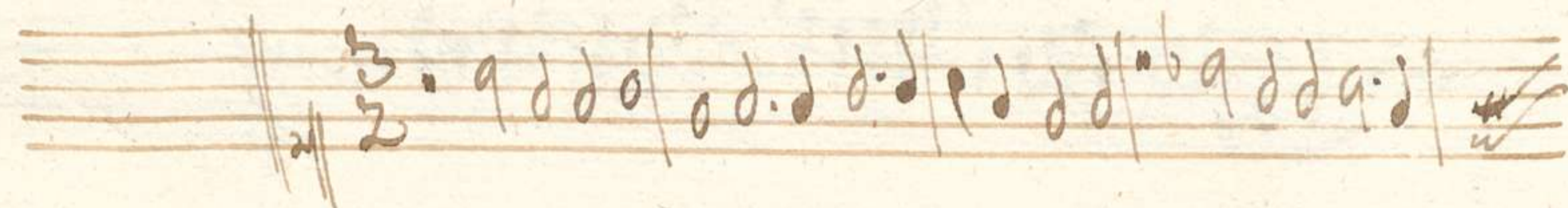
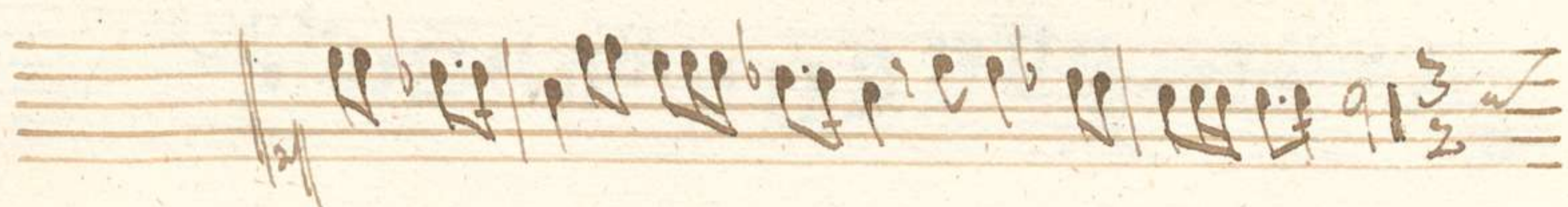


Beati omnes

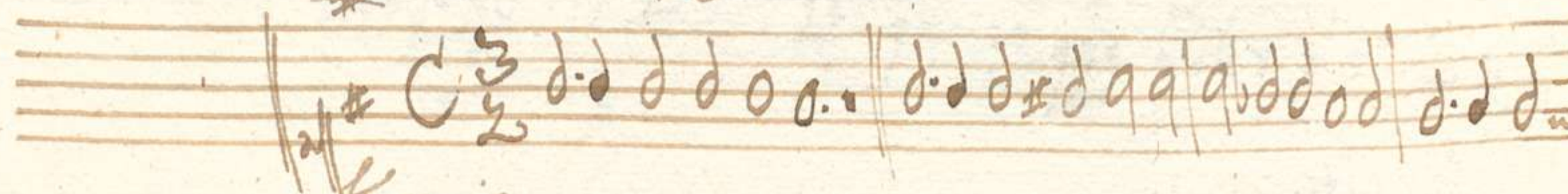


In exitu

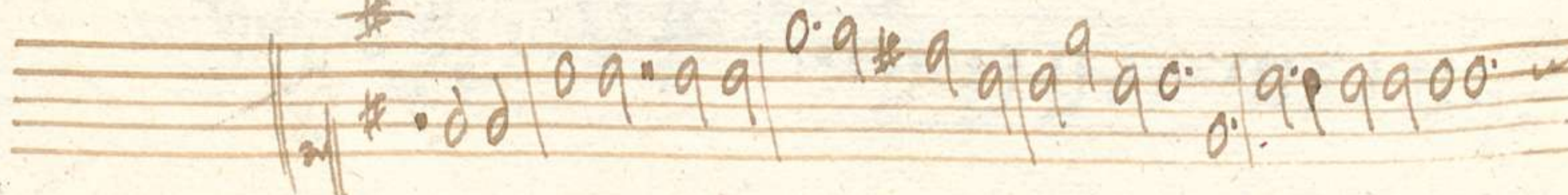
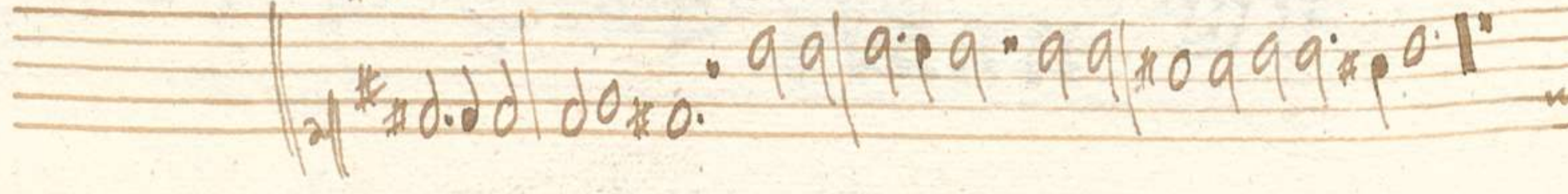


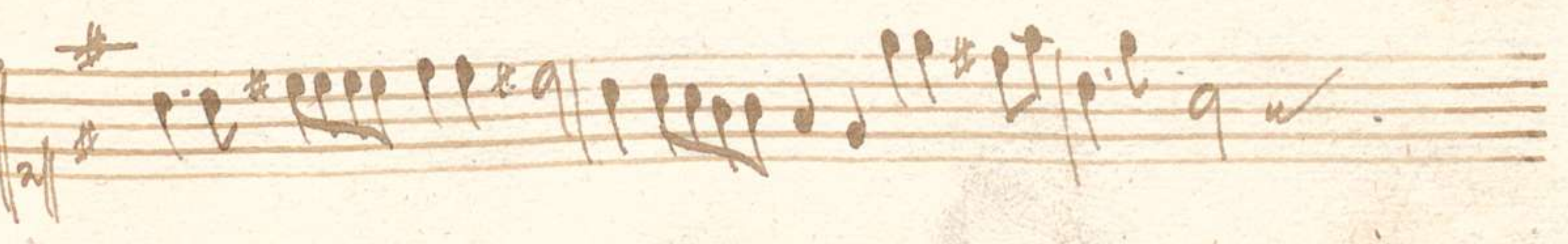
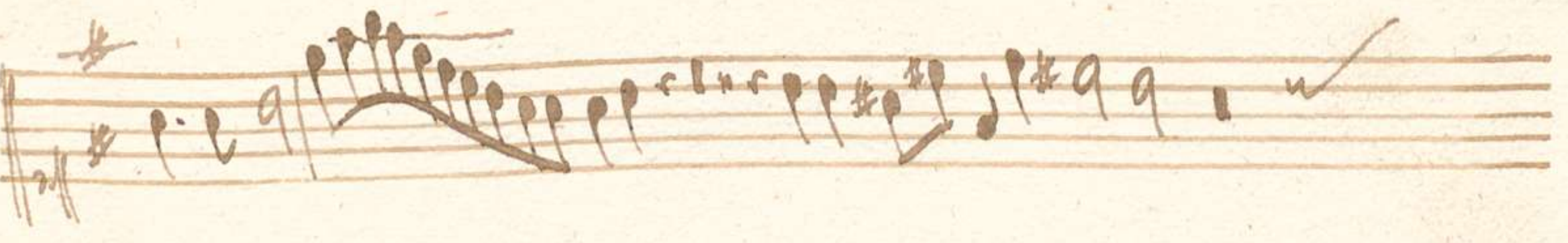
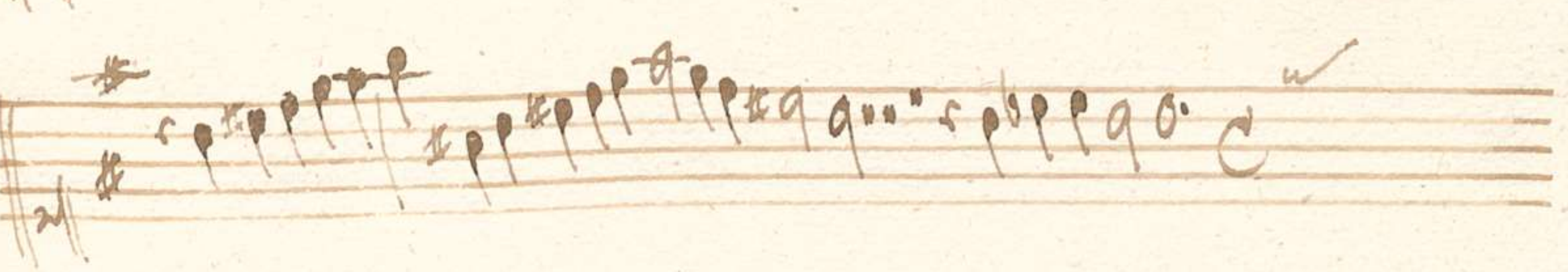
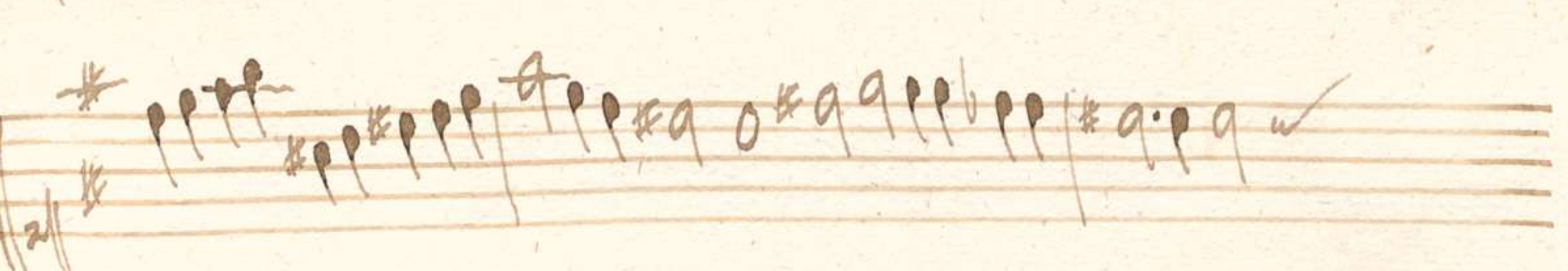
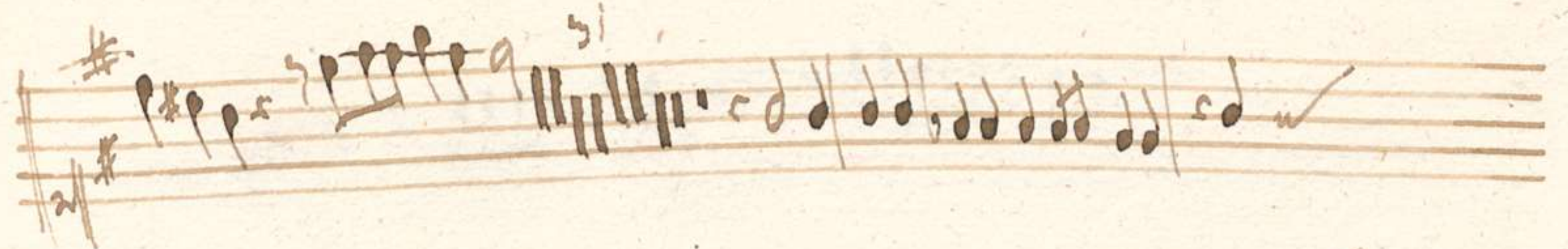


Lytania Lauretano.



Agnus





Handwritten musical notation on a five-line staff. It begins with a treble clef and a key signature of one sharp (F#). The notation consists of several measures of music, featuring eighth and sixteenth notes, some with stems and beams. A double bar line is present after the second measure. The notation ends with a double bar line and a fermata-like symbol.

Handwritten musical notation on a five-line staff, continuing from the first staff. It starts with a treble clef and a key signature of one sharp. The notation includes several measures with eighth and sixteenth notes, some beamed together. A double bar line is used to separate sections. The piece concludes with a double bar line and a fermata-like symbol.

Handwritten musical notation on a five-line staff, showing only the beginning of a piece. It features a treble clef and a key signature of one sharp. The notation is partially obscured by a double bar line and a fermata-like symbol.

A set of five empty musical staves.

A set of five empty musical staves.

A set of five empty musical staves.

A set of five empty musical staves.

