

(W 142)

Alto.

SIX

SIMPHONIES

*dont les trois premières avec les Hautbois, ou Flutes
obligés et les Cors ad Libitum.*

Et les trois dernières peuvent s'exécuter à quatre parties.

DÉDIÉES

à Son Altesse Sérénissime Monseigneur

CHRISTIAN IV

*Par la grace de Dieu, Prince Palatin du Rhin, Duc de Baviere, Comte de
Veldence, Sponheim, et Ribeaupierre, Seigneur de Hohenack, &c. &c. &c.*

PAR ERNESTO EICHNER

Maître de Concert de Son Altesse Serenissime.

ŒUVRE I^{er}

Prix 12[#]

A PARIS

*Chez le S^r Sieber Musicien rue S^t honore entre la rue D'Orleans
et celle des vieilles Etuves chez L'Apothicaire N^o 92*

Et aux adresses ordinaires

A . P . D . R .

Alto

SINFONIA I

Allegro
p

The musical score for the Alto part of the first symphony, page 2, is written on 13 staves. The tempo is marked *Allegro* and the initial dynamic is *p*. The score includes various dynamic markings such as *poco*, *a poco il*, *f*, *F*, *mezzo*, *pp*, *FF*, *Cres.*, *a*, *poco*, *il*, *P*, *FF*, *Rinf P*, *P*, *Rinf P*, *F*, *Cres.*, *il*, *FF*, and *mezzo*. The notation features a variety of rhythmic patterns, including eighth and sixteenth notes, and rests. The score concludes with a *mezzo* dynamic marking.

Alto *pp* *p*

Cres. *il poco* *f* *ff*

Andante gratoso

Rinf. p *Rinf. p* *Cres.* *p* *mezo f*

Cres. *f* *p* *f* *p* *FP* *FP* *mezo f* *Rinf. p*

Cres. *f* *p*

Alto

Allegro assai

Cres. il poco

Cres. il poco

Cres. il poco

Detailed description of the musical score: The score consists of 16 staves of music. The first staff is marked 'Alto' and 'Allegro assai'. The time signature is 4/4. The music is written in a treble clef with a key signature of one flat. The score includes various dynamics: p (piano), f (forte), ff (fortissimo), and crescendos (Cres.). Performance instructions include 'Cres. il poco' (crescendo a little) and 'il poco' (a little). The notation features a variety of rhythmic patterns, including eighth and sixteenth notes, and rests. There are also some markings like 'F' and 'P' on specific notes.

Alto

SINFONIA II

This page contains the handwritten musical score for the Alto part of the second symphony. The score is written on 15 staves. The key signature is two flats (B-flat and E-flat), and the time signature is common time (C). The tempo is marked *Allegro*. The score includes a variety of dynamic markings such as *pp*, *f*, *ff*, *p*, *ten*, *rit*, and *rit.*, as well as performance instructions like *il poco*, *rit.*, and *rit.*. The notation features complex rhythmic patterns, including sixteenth and thirty-second notes, and rests. The piece concludes with a first ending marked with a '1' and a fermata.

Alto

Rinf

Rinf

F

P

Cres.

il

F

FF

P

Andante

F

P

mezo

mezo

Rinf P

mezo

PP

F P F P

F P F P

PP

F P F P

PP

F P F P

Prestissimo *Alto*

Musical score consisting of 13 staves. The music is written in 3/8 time and features dynamic markings such as *F* (forte), *P* (piano), and *Cres. il* (crescendo). The tempo is marked *Prestissimo* and the volume is marked *Alto*. The notation includes various note values, rests, and articulation marks.

SINFONIA III

FF *Alto*

Adagio

p

FP

FF

4

Allegro

Cres.

F

FF

mezzo

FP

FF

F

F

F

Rinf

P

Rinf

P

F

P

F

Pf

P

4

F

F

Cres.

F

FF

mezzo

FP

F

p

F

193

Alto

Andante

Rinf.

Cres. Cres.

1

2

F *P* *F* *P*

Rinf.

1

F *P* *Cres.* *P* *Cres.* *F* *P*

2

F *P* *F* *Cres. il poco* *F* *FF*

Allegro assai

F *P*

3

F *P* *F* *P* *F* *P* *F* *P* *F* *P* *F* *P* *F* *P*

3 *P*

1 *1* *1* *1* *1* *1* *1* *1*

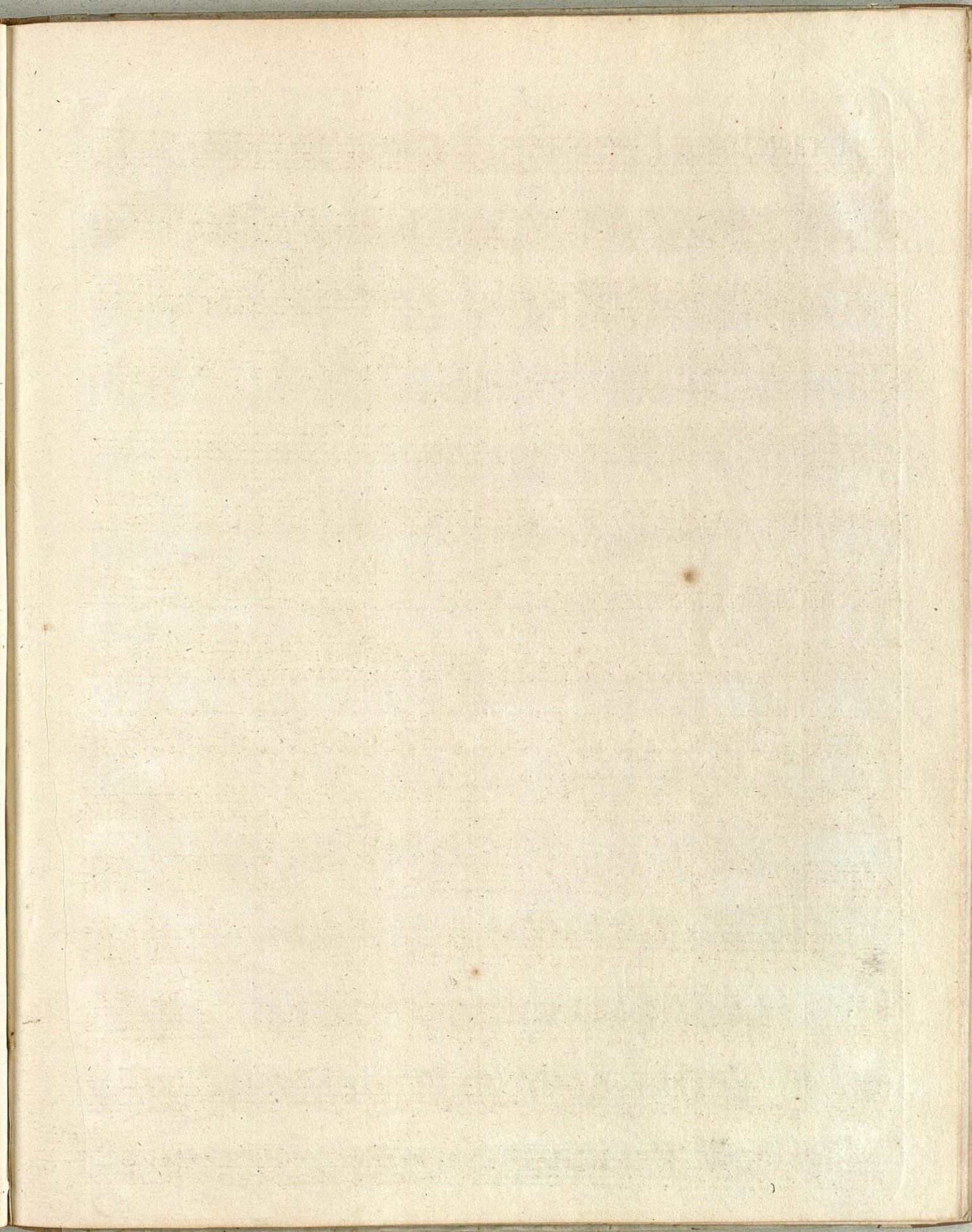
F *Cres.* *il poco* *il* *F* *FF*

P

3

F *P* *F* *P* *F* *P* *F* *P* *F* *P*

Detailed description of the musical score: The page contains a single system of music for the Alto part. It begins with a tempo marking of 'Andante' and a dynamic of 'p'. The first section features a melodic line with various ornaments and a supporting bass line with chords. Dynamics range from 'p' to 'f', with 'Cres.' and 'Cres. Cres.' markings. The tempo then changes to 'Allegro assai'. This section is characterized by more rhythmic activity, including triplets and repeated rhythmic patterns. Dynamics are more varied, including 'f', 'p', 'Cres.', 'il poco', 'F', and 'FF'. The score concludes with a final cadence.



SINFONIA IV

Alto

Allegro

The musical score for the Alto part of Sinfonia IV, page 12, is written in common time (C) and begins with a treble clef. The tempo is marked *Allegro*. The score consists of 12 staves of music. The first staff starts with a treble clef and a common time signature. The music is characterized by rhythmic patterns of eighth and sixteenth notes, often with slurs. Dynamics are indicated throughout, including *f*, *p*, *ff*, and *pp*. Crescendo and decrescendo markings are used to indicate changes in volume. The piece concludes with a repeat sign.

Alto

This musical score for Alto consists of 15 staves of music. The notation includes various rhythmic values, slurs, and dynamic markings. The first section is marked *Alto* and includes dynamics such as *P*, *F*, *PP*, *FF*, *Cres.*, and *il poco F*. The second section is marked *Andante poco Allegro* and includes dynamics such as *F*, *FP*, *P*, *Rinf.*, *Cres.*, and *FIFP*. The score concludes with a *Cres. P* marking.

Alto

Allegro assai

P *F* *P* *Cres.* *F*

FF

P

Cres. il F

1

P *F* *P* *F* *P* *F* *P* *F* *P*

Cres. Smor Cres. Smor Cres. Smor Cres. il F poco F

P

Cres. il F FF

SINFONIA V

Alto
P

Allegro
F

8 P

1

P
Cres. *il F* *FF* *P* *F*

P *F*

1 *P*

Rinf. p Rinf. p

P

Adagio Allegro
F

8 P *FF*

Alto

P F

Andante un poco *P Allegro*

F P F

P Cres. F P

1 Rinf. P

Rinf. P

FP FP FP FP F

F P F P

Cres. F P

FP FP FP FP

Allegro assai

F P F F

Cres. il poco F

P P Cres. il poco FF

P F P

Alto

This musical score for Alto consists of 14 staves of music. The notation includes various rhythmic values, accidentals, and dynamic markings. The score begins with a '4' above the first staff, indicating a measure rest. Dynamic markings include *p*, *FF*, *F*, *FF*, *p*, *F*, *Cres.*, *il poco*, *F*, *FF*, *p*, *F*, *P*, *F*, *P*, *Cres.*, *a poco*, *F*, *FF*, *F*, *P*, and *F*. Performance instructions such as *il poco* and *a poco* are placed above the staves. The music features a variety of textures, including melodic lines, arpeggiated figures, and dense chordal passages.

Alto

SINFONIA VI

Allegro

Handwritten musical score for the Alto part of the sixth symphony. The score consists of 14 staves of music. The tempo is marked 'Allegro'. The key signature has one flat (B-flat). The score includes various dynamics such as *P* (piano), *F* (forte), *Cres.* (crescendo), *il* (ritardando), *P1^o*, *P2^o*, *FF* (fortissimo), and *IF* (mezzo-forte). There are also articulation marks like accents and slurs, and first endings marked with '1'. The notation includes eighth and sixteenth notes, rests, and various rests and ornaments.

Alto

Musical score for the 'Alto' section, consisting of ten staves of music. The notation includes various rhythmic values, dynamic markings (F, P), and articulation marks (accents, slurs). The music is written in a single system across ten staves.

Andante

Musical score for the 'Andante' section, consisting of six staves of music. The notation includes various rhythmic values, dynamic markings (F, P), and articulation marks (accents, slurs). The music is written in a single system across six staves.

Alto

Allegro assai

P

Cres. *il* *F* *F* *F* *P* *F* *FP* *F* *P* *F* *P*

P *F* *F* *P* *F* *P* *F* *P*

F *P* *F* *P* *F* *P* *F* *P*

F *P* *F* *P* *F* *P* *F* *P*

poco *F* *FF* *Cres.* *il*

Smor *P*

P *Cres.* *il poco* *F* *FF* *P* *FF* *P*

P *F* *P* *F* *F* *P* *F* *P* *F* *F*

F *P* *F* *P* *F* *P* *F* *P*

F

Fin