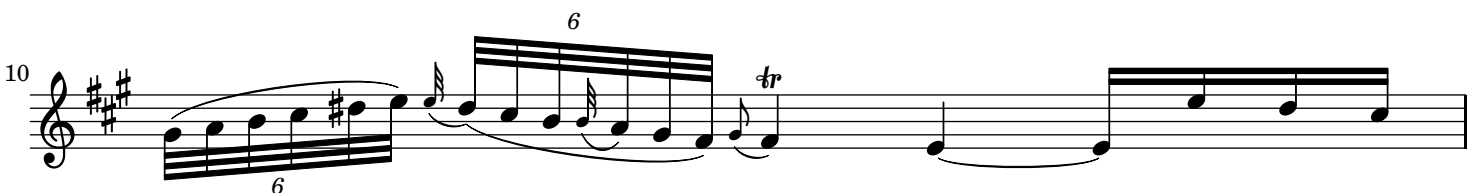
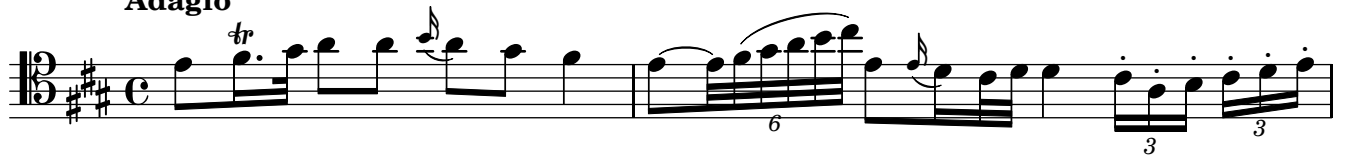


Sonata n°4 - G.4

Violoncelle

Luigi BOCCHERINI
(1743-1805)

Adagio



11

12

13

15

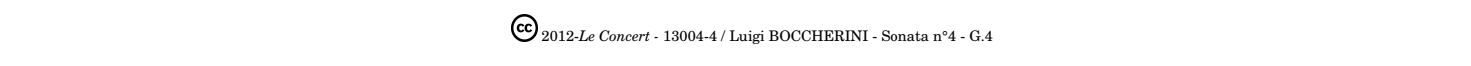
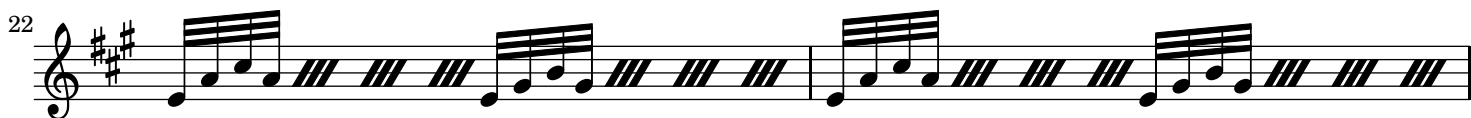
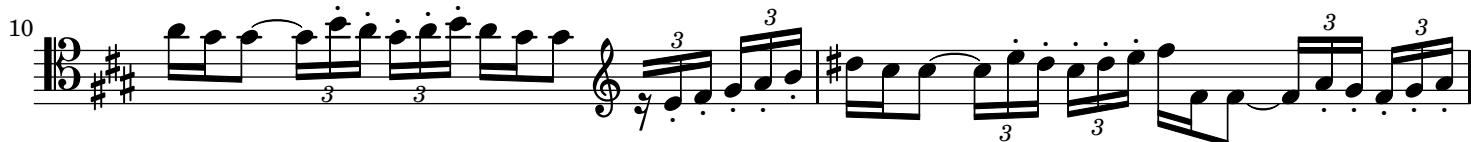
17

19

20

21

Allegro



26

29

32

35

38

41

44

46

48

50

53

56

Musical score for Violoncelle, measures 58-82. The score is written in treble clef (measures 58-66) and bass clef (measures 67-82). The key signature is three sharps (F#, C#, G#). The time signature is 3/4. The score includes various musical notations such as trills (tr), triplets (3), and slurs. The piece concludes with a double bar line and a fermata.

Measures 58-66: Treble clef. Measures 58-60: Trills on G#4 and A4. Measures 61-62: Trills on G#4 and A4. Measures 63-64: Trills on G#4 and A4. Measures 65-66: Trills on G#4 and A4.

Measures 67-73: Bass clef. Measures 67-70: Triplets of eighth notes. Measures 71-73: Trills on G#4 and A4.

Measures 74-76: Bass clef. Measures 74-76: Slurs and triplets.

Measures 77-79: Bass clef. Measures 77-79: Slurs and triplets.

Measures 80-82: Bass clef. Measures 80-82: Slurs and triplets.

Affettuoso

37

Measures 37-41: Bass clef, 3/8 time signature, key signature of two sharps (F# and C#). Measure 37 starts with a quarter note G2, followed by quarter notes A2, B2, and C3. Measure 38 has a quarter note D3, a quarter note E3 with a trill (tr), and a quarter note F#3. Measure 39 has a quarter note G3, a quarter note A3, and a quarter note B3. Measure 40 has a quarter note C4, a quarter note D4, and a quarter note E4. Measure 41 has a quarter note F#4, a quarter note G4, and a quarter note A4.

42

Measures 42-45: Bass clef, 3/8 time signature. Measure 42 has a quarter note B4, a quarter note C5, and a quarter note D5. Measure 43 has a quarter note E5, a quarter note F#5, and a quarter note G5. Measure 44 has a quarter note A5, a quarter note B5, and a quarter note C6. Measure 45 has a quarter note D6, a quarter note E6, and a quarter note F#6.

46

Measures 46-49: Bass clef, 3/8 time signature. Measure 46 has a quarter note G5, a quarter note A5, and a quarter note B5. Measure 47 has a quarter note C6, a quarter note D6, and a quarter note E6. Measure 48 has a quarter note F#6, a quarter note G6, and a quarter note A6. Measure 49 has a quarter note B6, a quarter note C7, and a quarter note D7.

50

Measures 50-54: Bass clef, 3/8 time signature. Measure 50 has a quarter note E6, a quarter note F#6, and a quarter note G6. Measure 51 has a quarter note A6, a quarter note B6, and a quarter note C7. Measure 52 has a quarter note D7, a quarter note E7, and a quarter note F#7. Measure 53 has a quarter note G7, a quarter note A7, and a quarter note B7. Measure 54 has a quarter note C8, a quarter note D8, and a quarter note E8.

55

Measures 55-58: Bass clef, 3/8 time signature. Measure 55 has a quarter note F#7, a quarter note G7, and a quarter note A7. Measure 56 has a quarter note B7, a quarter note C8, and a quarter note D8. Measure 57 has a quarter note E8, a quarter note F#8, and a quarter note G8. Measure 58 has a quarter note A8, a quarter note B8, and a quarter note C9.

59

Measures 59-63: Bass clef, 3/8 time signature. Measure 59 has a quarter note D8, a quarter note E8, and a quarter note F#8. Measure 60 has a quarter note G8, a quarter note A8, and a quarter note B8. Measure 61 has a quarter note C9, a quarter note D9, and a quarter note E9. Measure 62 has a quarter note F#9, a quarter note G9, and a quarter note A9. Measure 63 has a quarter note B9, a quarter note C10, and a quarter note D10.

64

Measures 64-67: Bass clef, 3/8 time signature. Measure 64 has a quarter note E9, a quarter note F#9, and a quarter note G9. Measure 65 has a quarter note A9, a quarter note B9, and a quarter note C10. Measure 66 has a quarter note D10, a quarter note E10, and a quarter note F#10. Measure 67 has a quarter note G10, a quarter note A10, and a quarter note B10.

68

Measures 68-71: Bass clef, 3/8 time signature. Measure 68 has a quarter note C11, a quarter note D11, and a quarter note E11. Measure 69 has a quarter note F#11, a quarter note G11, and a quarter note A11. Measure 70 has a quarter note B11, a quarter note C12, and a quarter note D12. Measure 71 has a quarter note E12, a quarter note F#12, and a quarter note G12.

72

Measures 72-75: Bass clef, 3/8 time signature. Measure 72 has a quarter note A12, a quarter note B12, and a quarter note C13. Measure 73 has a quarter note D13, a quarter note E13, and a quarter note F#13. Measure 74 has a quarter note G13, a quarter note A13, and a quarter note B13. Measure 75 has a quarter note C14, a quarter note D14, and a quarter note E14.

76

Measures 76-79: Bass clef, 3/8 time signature. Measure 76 has a quarter note F#13, a quarter note G13, and a quarter note A13. Measure 77 has a quarter note B13, a quarter note C14, and a quarter note D14. Measure 78 has a quarter note E14, a quarter note F#14, and a quarter note G14. Measure 79 has a quarter note A14, a quarter note B14, and a quarter note C15.

80

Measures 80-83: Bass clef, 3/8 time signature. Measure 80 has a quarter note D14, a quarter note E14, and a quarter note F#14. Measure 81 has a quarter note G14, a quarter note A14, and a quarter note B14. Measure 82 has a quarter note C15, a quarter note D15, and a quarter note E15. Measure 83 has a quarter note F#15, a quarter note G15, and a quarter note A15.