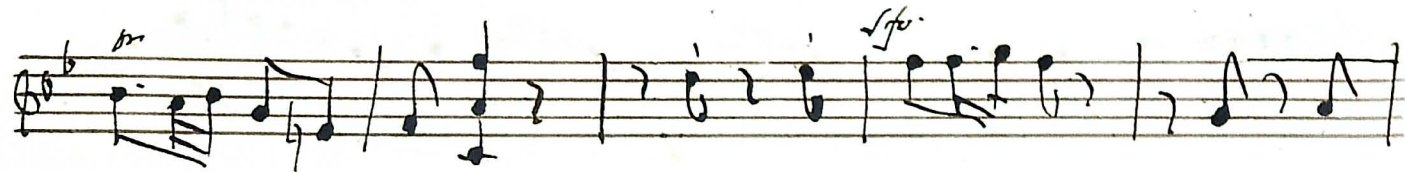
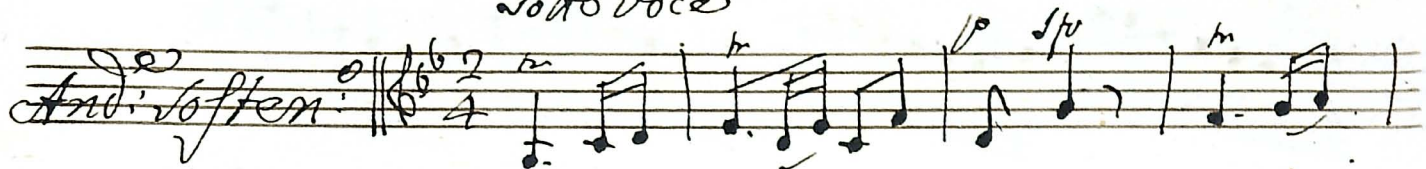


Sotto voce



14/12

Volkis

This image shows a page of handwritten musical notation, numbered '2' in the top left corner. The page contains ten staves of music, each with a treble clef and a key signature of one flat (B-flat). The notation is highly complex and dense, featuring numerous slurs, ties, and dynamic markings. The first staff begins with a 'for' marking. The second staff has a 'p.' marking. The third staff has a 'no' marking. The fourth staff has a 'for' marking. The fifth staff has a 'no' marking. The sixth staff has a 'no' marking. The seventh staff has a 'no' marking. The eighth staff has a 'no' marking. The ninth staff has a 'no' marking. The tenth staff has a 'no' marking. The notation includes many beamed notes, often with stems pointing downwards, and various rests. The handwriting is fluid and expressive, suggesting a composer's sketch or a performance score.

no *fmo*

for *no*

for *A*

no

for

Volta

Handwritten musical notation on a single staff, featuring a treble clef, a key signature of one flat (B-flat), and a 3/4 time signature. The notation includes quarter notes, eighth notes, and a pair of beamed eighth notes. A dynamic marking 'f' is written above the staff.

Handwritten musical notation on a single staff, featuring a treble clef, a key signature of one flat (B-flat), and a 3/4 time signature. The notation includes quarter notes and eighth notes. A dynamic marking 'f' is written above the staff.

Handwritten musical notation on a single staff, featuring a treble clef, a key signature of one flat (B-flat), and a 3/4 time signature. The notation includes quarter notes and eighth notes.

Handwritten musical notation on a single staff, featuring a treble clef, a key signature of one flat (B-flat), and a 3/4 time signature. The notation includes quarter notes and eighth notes.

Handwritten musical notation on a single staff, featuring a treble clef, a key signature of one flat (B-flat), and a 3/4 time signature. The notation includes quarter notes, eighth notes, and a pair of beamed eighth notes. A dynamic marking 'f' is written above the staff.

Handwritten musical notation on a single staff, featuring a treble clef, a key signature of one flat (B-flat), and a 3/4 time signature. The notation includes quarter notes, eighth notes, and a pair of beamed eighth notes. A dynamic marking 'f' is written above the staff.

Handwritten musical notation on a single staff, featuring a treble clef, a key signature of one flat (B-flat), and a 3/4 time signature. The notation includes quarter notes, eighth notes, and a pair of beamed eighth notes.

Handwritten musical notation on a single staff, featuring a treble clef, a key signature of one flat (B-flat), and a 3/4 time signature. The notation includes quarter notes, eighth notes, and a pair of beamed eighth notes.

Handwritten musical notation on a single staff, featuring a treble clef, a key signature of one flat (B-flat), and a 3/4 time signature. The notation includes quarter notes, eighth notes, and a pair of beamed eighth notes.

Handwritten musical notation on a single staff, featuring a treble clef, a key signature of one flat (B-flat), and a 3/4 time signature. The notation includes quarter notes, eighth notes, and a pair of beamed eighth notes.

Vollis

Gloria

And: più tosto ten. $\text{6}\flat\flat \frac{2}{4}$ *for*

so to voce

Minore sotto voce

sotto voce

ppmo

ppmo

pp

poco cresc

volte



Gay Duo

