

Bourée pour la Suite de la Nymphé

Ariane et Bacchus 1696

Marin Marais 1656-1728

Descant

8

4

7

11

14

Detailed description: The image shows a musical score for a piece titled 'Bourée pour la Suite de la Nymphé'. The score is written in G major (one sharp) and 3/4 time. It consists of five staves of music. The first staff is labeled 'Descant' and starts at measure 8. The second staff starts at measure 4. The third staff starts at measure 7 and includes a repeat sign. The fourth staff starts at measure 11. The fifth staff starts at measure 14 and ends with a double bar line. The music is primarily composed of eighth and quarter notes, with some rests and a final cadence.

Bourée pour la Suite de la Nymphé

Ariane et Bacchus 1696

Marin Marais 1656-1728

Treble 1

8

4

8

11

14

Bourée pour la Suite de la Nymphé

Ariane et Bacchus 1696

Marin Marais 1656-1728

Treble 2

4

8

11

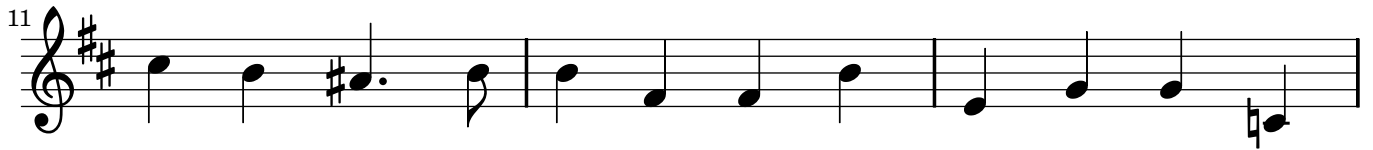
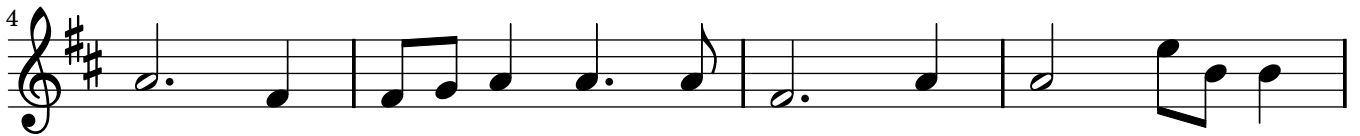
14

The image shows a musical score for the Treble 2 part of a Bourée. The score is written in treble clef with a key signature of two sharps (F# and C#) and a common time signature (C). The music consists of five staves of notation. The first staff is labeled 'Treble 2' and starts with a treble clef, a key signature of two sharps, and a common time signature. The second staff is labeled '4' and continues the melody. The third staff is labeled '8' and features a repeat sign at the beginning. The fourth staff is labeled '11' and continues the melody. The fifth staff is labeled '14' and ends with a double bar line and repeat dots. The notation includes various note values such as quarter, eighth, and sixteenth notes, as well as rests and repeat signs.

Bourée pour la Suite de la Nymphé

Ariane et Bacchus 1696

Marin Marais 1656-1728



Bourée pour la Suite de la Nymphé

Ariane et Bacchus 1696

Marin Marais 1656-1728

Bass

8

4 8

8 8

11 8

14 8